

infobit iControl A32 Dante Audio Controller



infobit iControl A32 Dante Audio Controller User Manual

[Home](#) » [infobit](#) » infobit iControl A32 Dante Audio Controller User Manual 

Contents

- [1 infobit iControl A32 Dante Audio Controller](#)
- [2 Product Usage Instructions](#)
- [3 FAQ](#)
- [4 Overview](#)
- [5 Specification](#)
- [6 Settings](#)
- [7 Panel operation indicators](#)
- [8 CONTACT](#)
- [9 Documents / Resources](#)
 - [9.1 References](#)
- [10 Related Posts](#)



infobit iControl A32 Dante Audio Controller



Product Usage Instructions

Installation

- The iControl A32 control panel should be installed in a suitable location that allows easy access for the end user.

Connection

- Connect the iControl A32 to the iSound Series DSP using standard CAT-5/6/7 cables and ensure power is supplied via Ethernet (PoE).

Configuration

- Configure the control panel to suit the specific application needs by customizing up to 32 menu functions using the intuitive interface and software provided.

Operation

- Once installed and configured, use the control knob and OLED display to interact with the DSP system, adjusting audio settings such as volume, mixing, and scene switching.

FAQ

- **Q:** Can multiple iControl A32 panels be connected over large distances?
- **A:** Yes, using standard network technology, multiple remote control panels can be connected over large distances.
- **Q:** What power supply method does the iControl A32 use?
- **A:** The iControl A32 is powered over Ethernet (PoE), eliminating the need for custom cables and local power supplies.
- **Q:** How many menu functions can be customized on the iControl A32?
- **A:** The iControl A32 allows for user customization and programming of up to 32-menu functions.

Overview

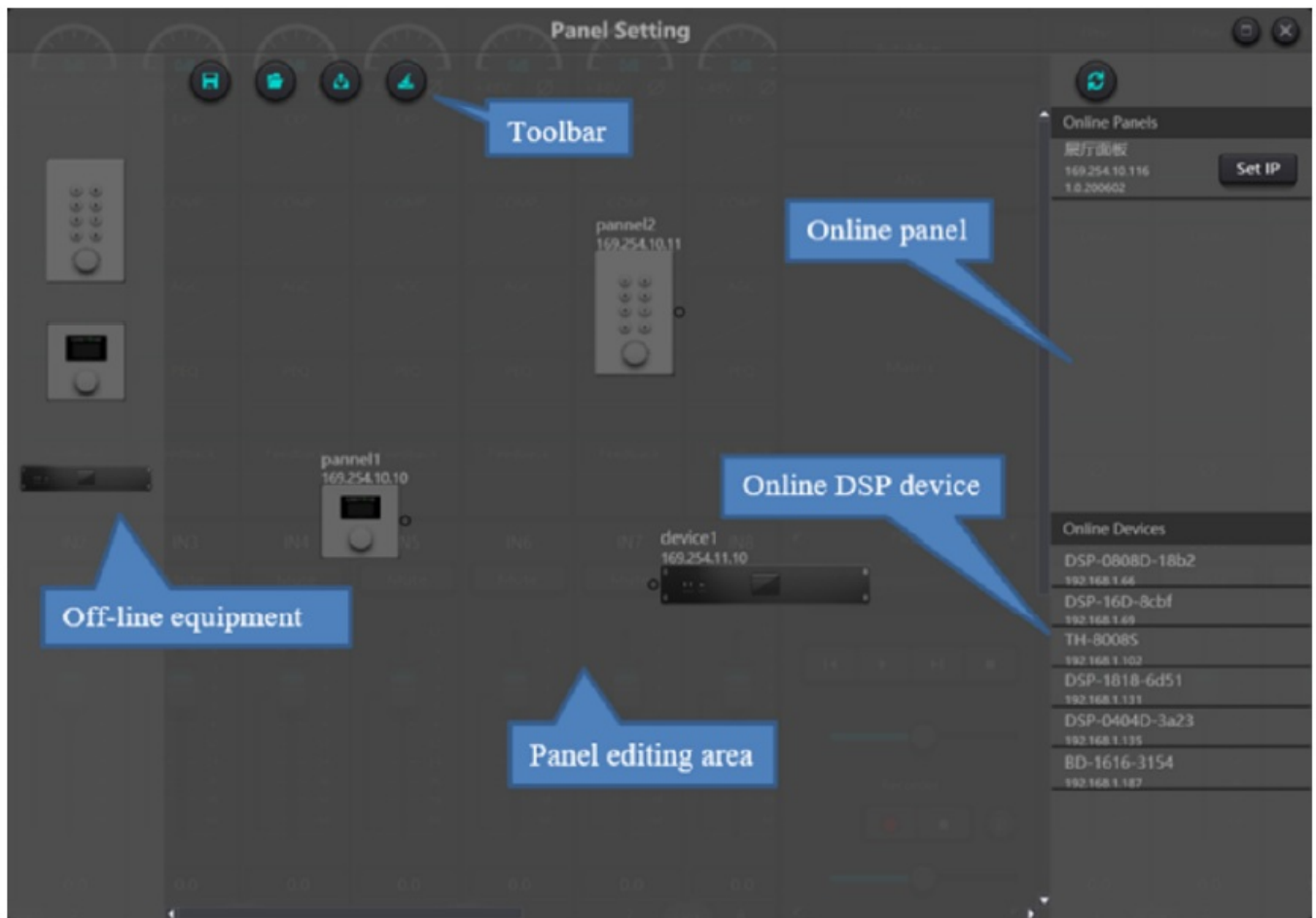
- The iControl A32 control panel is the control terminal of the INFOBIT iSound DSP (Digital Audio Signal Processor), which supports customized functions, and 1 control knob, with 8 indicators showing the control status. The aluminum alloy panel is matched with a bottom box, which has a neat and textured appearance and simple and convenient assembly.
- The iControl A32 is a remote control of the DSP system. It provides a simple and intuitive interface for the end user and can be installed and configured to suit the unique needs of a specific application.
- The device is connected via standard CAT-5/6/7 cables and is powered over Ethernet (PoE), eliminating the need for custom cables and local power supplies. Using standard network technology, multiple remote control panels can be connected over large distances.
- Partnered with one or more iSound Series DSPs from INFOBIT AV, the A32 offers a range of audio control abilities such as volume, mixing, and scene switching. With PoE power supply and UDP communication protocol, this control panel is easy to install and configure for your specific application needs.
- It allows for user customization and programming of up to 32-menu functions. Its intuitive interface and software make it simple to connect multiple physical panels to the DSP device via the network.

Specification

Model	iControl A32
Name	32-menu Dante Audio Controller
OLED display	1.3"
Control knob	1 pcs
Control protocols	UDP
Address setting method	TCP/IP
Signal cable length	100 Meters
Power supply	PoE
Connection port	RJ45
Power consumption	<100mW
Material	Aluminium alloy sandblasting
Color	Silver White
Cover dimensions	86 x 86mm
Wall box dimensions	80 x 80 x 45mm
Operating Humidity	10% to 90% RH (non-condensing)
Operating Temperature	+32 to +104 °F (0 to +40 °C)

Settings

- The user can set the key functions in the PC client software interface.
- Each can be defined as a gain, mute, preset, custom third-party device control, and more.



Offline device: It is suitable for offline editing, and the debugging engineer first configures the panel parameters locally and then downloads them to the online panel. Of course, the user can also edit the online panel directly, drag it out in the online panel column and double-click to edit it in the panel design area.

- Notice that there is a small circle on both the panel and the device, click on the small circle to pull up a line and select the destination device, thus establishing a connection between the two devices.
- Double-click the panel in the design area to enter the panel configuration interface, the configuration of the two panels will be described separately below. After the configuration is complete, click the download icon in the toolbar to download the panel configuration to the hardware.

OLED panel

The OLED panel consists of a 1.3" OLED screen and a knob. The panel functions are added in a list, and a single encoder is used for selecting the function and parameter adjustment.

Click "add menu" to show the menu selection box. Choose the corresponding menu item and configure it. After finishing the setup, click the toolbar download icon to download the configuration to the panel hardware. Panel menu navigation:

- Display the panel name and IP address on the main interface and turn the knob left or right to select the function.
- Press the button on the knob, and the second row on the menu interface starts to flash which indicates edit mode.
- Turn the knob left or right to change the value.
- Press the button on the knob again to exit edit mode and go back to menu mode.



Panel operation indicators

- 1. The button light is constantly on, indicating that the button is configured for mute or route on.
- 2. The button light flashes to indicate that the button is configured with the gain function, and the configuration knob is used together to adjust the gain of the channel. The 13 lights around the knob represent the gain, which turns on and off as the gain is magnitude. Full off represents a gain of -72dB, and full brightness represents 12 dB.
- 3. The button light lights up when pressed, indicating that the button is configured with a preset or command-type function.

CONTACT

- INFOBIT AV
- www.infobitav.com
- info@infobitav.com

Documents / Resources

	<p>infobit iControl A32 Dante Audio Controller [pdf] User Manual</p> <p>iControl A32 Dante Audio Controller, iControl A32, Dante Audio Controller, Audio Controller, Controller</p>
--	---

References

- [infobit AV- 4K Matrix Switchers, Wireless Presentation, Active Optical Cable and Conference Camera-Meeting Room Solutions](#)
- [User Manual](#)

Manuals+. Privacy Policy

This website is an independent publication and is neither affiliated with nor endorsed by any of the trademark owners. The "Bluetooth®" word mark and logos are registered trademarks owned by Bluetooth SIG, Inc. The "Wi-Fi®" word mark and logos are registered trademarks owned by the Wi-Fi Alliance. Any use of these marks on this website does not imply any affiliation with or endorsement.