

Infinmind
PRO MX
E510
Wireless
Mouse Smart
Fly Scrolling



INFINMIND PRO MX E510 Wireless Mouse Smart Fly Scrolling User Manual

[Home](#) » [INFINMIND](#) » INFINMIND PRO MX E510 Wireless Mouse Smart Fly Scrolling User Manual 

Contents

- 1 INFINMIND PRO MX E510 Wireless Mouse Smart Fly Scrolling
- 2 Product Usage Instructions
- 3 Frequently Asked Questions
- 4 Location and Use
- 5 Insulation Sheet
- 6 Power switch
- 7 Change stored wireless information
- 8 DPI Adjustment
- 9 Smart Flying Scroll
- 10 About using on Mac OS
- 11 About mouse wheel direction on Mac OS
- 12 Functions
- 13 FCC STATEMENT
- 14 Documents / Resources
 - 14.1 References

Infinmind

INFINMIND PRO MX E510 Wireless Mouse Smart Fly Scrolling



Product Specifications:

- **Dimensions:** 650*200mm
- **Weight:** 105g
- Wireless mouse with Smart Fly Scrolling feature
- Power switch
- FCC ID: 2AAVD-D1037E10

Product Usage Instructions

Wireless USB Receiver Storage and Use:

Store the wireless USB receiver in its designated location. When using the mouse on a Mac, ensure the system button on the bottom of the mouse is switched to the Mac setting.

Switching Wireless Signal:

Press the signal switch button to toggle between different connection types (USB, Bluetooth 1, Bluetooth 2). Insert the USB receiver into the device or connect via Bluetooth by finding the corresponding signal on the device.

Smart Flying Scroll Wheel & Left/Right Scroll:

Utilize the scroll wheel to navigate quickly through files or websites. Scroll up or down for vertical movement and press the scroll wheel left or right for horizontal scrolling.

DPI Adjustment:

Click the DPI button to change the sensitivity settings. The number of times the LED flashes indicates the DPI speed (1000, 1600, 2400, 3000).

Changing Stored Wireless Information:

To connect to a new device via Bluetooth, clear the memory information by following the provided instructions. This allows the mouse to be found by the new device.

Fast Switching Between Multiple Devices:

For seamless switching between connected devices, simply click the device switch key to automatically connect to the desired device.

Mouse Wheel Direction on Mac OS:

The mouse can be customized by using either one or two AA batteries to adjust its weight according to personal preference.

Frequently Asked Questions

Q: How do I switch between USB and Bluetooth connectivity?

A: Press the signal switch button to toggle between USB and Bluetooth modes. Insert the USB receiver or find the corresponding Bluetooth signal on your device to connect.

Q: How can I adjust the DPI settings?

A: Click the DPI button on the mouse to cycle through different sensitivity levels. The number of LED flashes indicates the DPI speed.

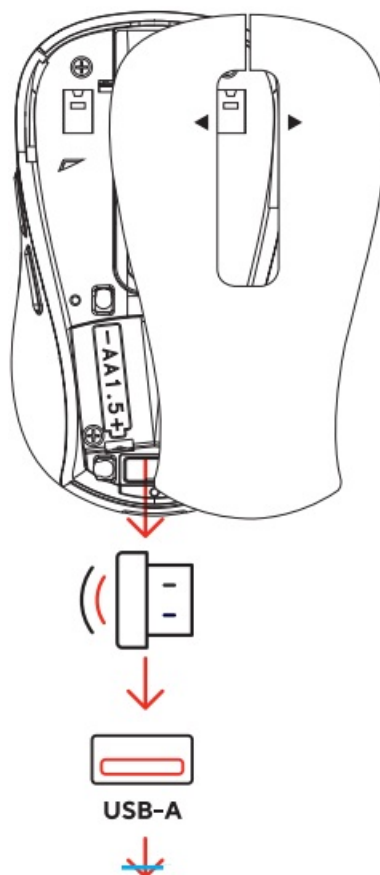
Q: How do I clear stored wireless information on the mouse?

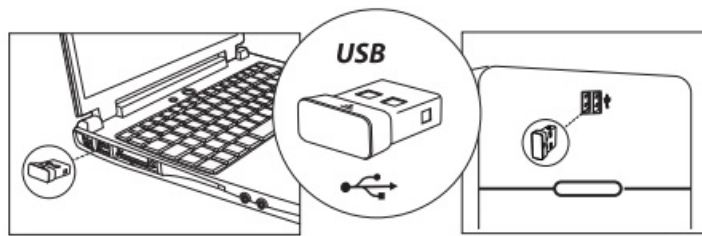
A: Follow the provided instructions to clear memory information stored for Bluetooth connections. This allows for easy pairing with new devices.

FCC ID: 2AAVD-D1037E10

Location and Use

Wireless USB receiver storage location and use

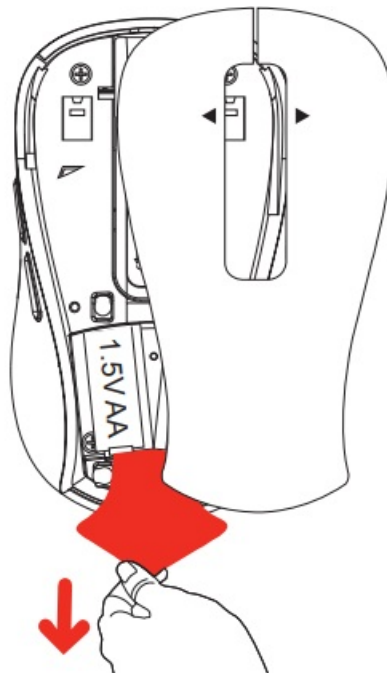




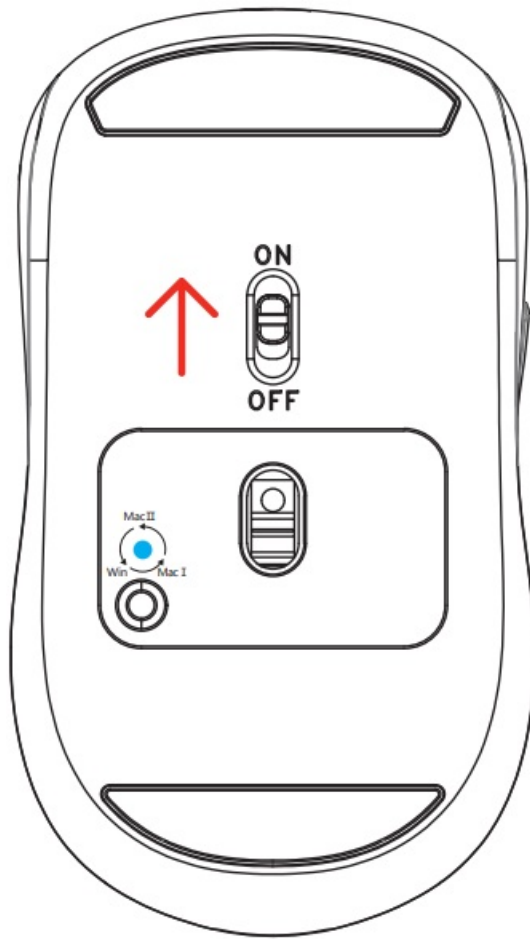
- Open the case from the mouse tail arrow
- Take out the wireless USB receiver
- Plug it into the device port and use it

Insulation Sheet




Open the cover and pull out the insulation sheet



Power switch

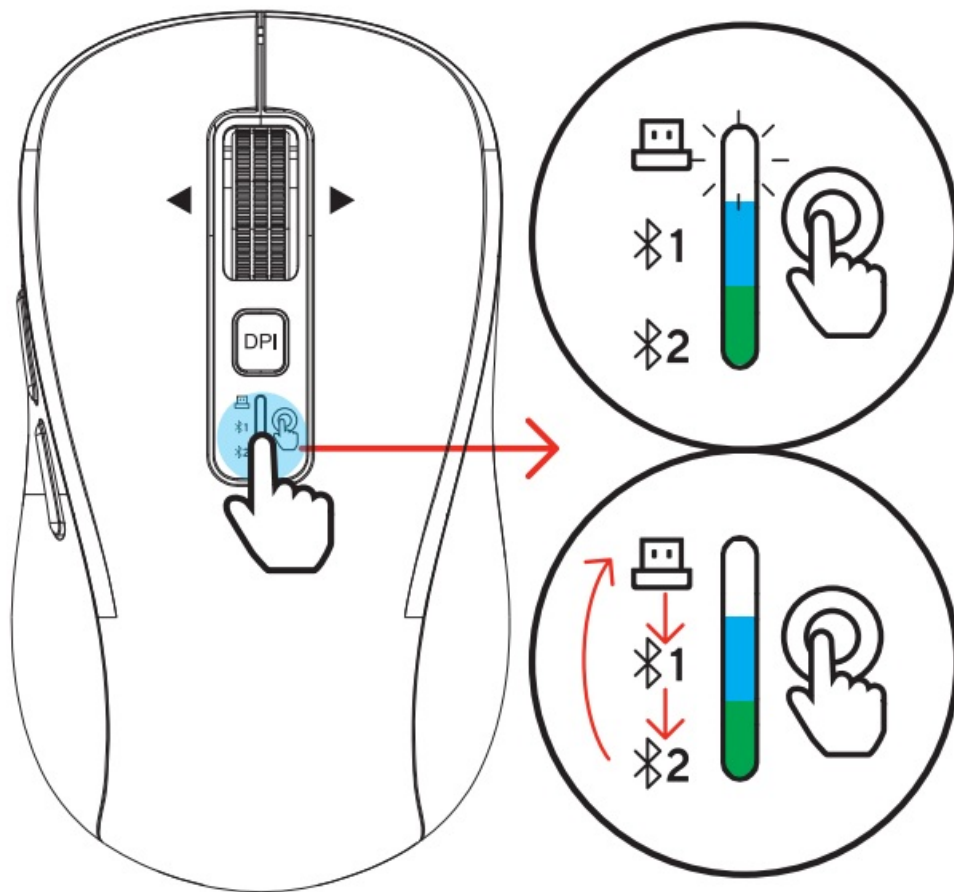


Switching wireless signal

-  (White light) : Wireless USB receiver signal
-  (Blue light) : Bluetooth 1 (Pairing name: BT Mouse)
-  (Green light) : Bluetooth 2 (Pairing name :BT Mouse)

After switching to the corresponding connection type, insert the USB receiver into the corresponding device or find the Bluetooth signal on the corresponding device and connect it.

Defaulted setting at 2.4G mode

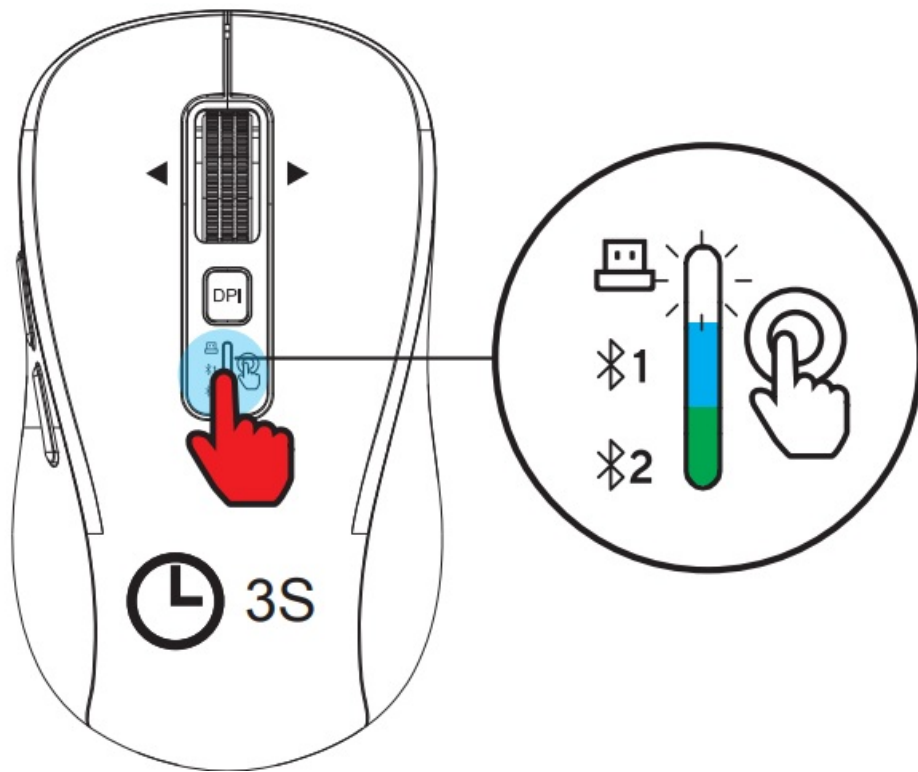


Change stored wireless information

Each Bluetooth can only record the information of one device, when using the same Bluetooth to connect to another new device, please clear the memory information of the Bluetooth Settings, then the Bluetooth can be found by the new device.

Clear method: as shown in the figure, click and switch to blue/green light, then hold down the button again for 3 seconds, the light will go into a rapid flashing state, at this time, the old device information has been cleared, can be found by the new device.

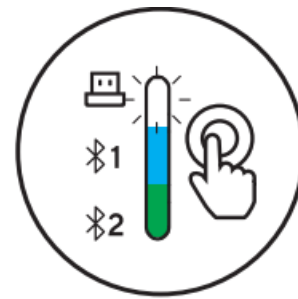
You need to press this button with much force. We design this considering any touch by mistake.



Fast switching between multiple devices

For connected devices, Bluetooth will remember the information of the device, at this time, If the device's wireless signal is on, only need to click the device switch key, Bluetooth will automatically connect to the corresponding device, so that users can fast switch between multiple devices.

Click the button



Choose USB or Bluetooth 1/2



Flashing lights of the corresponding color

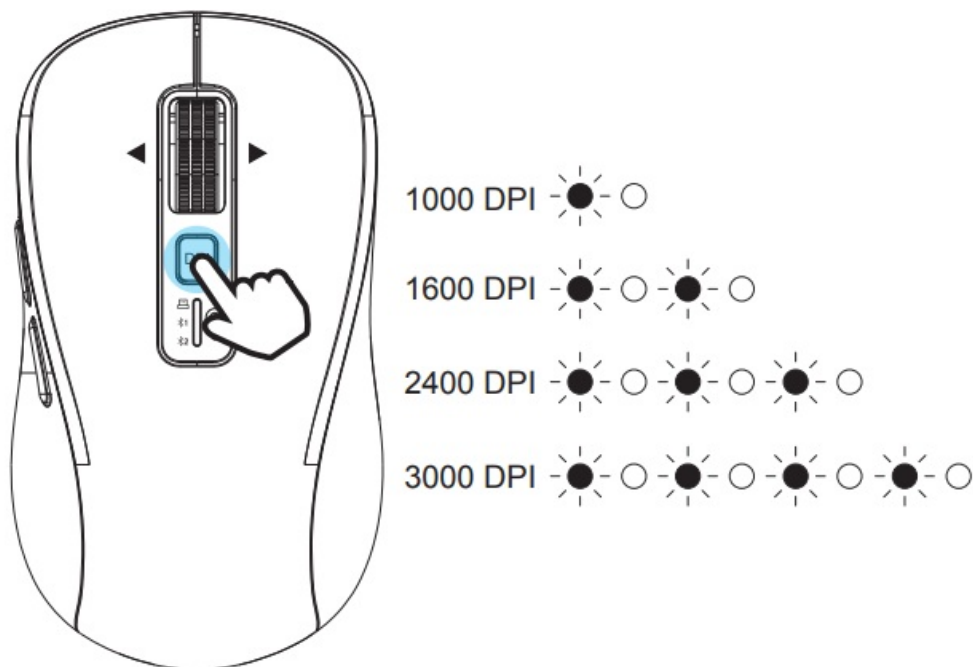


Signal switching success



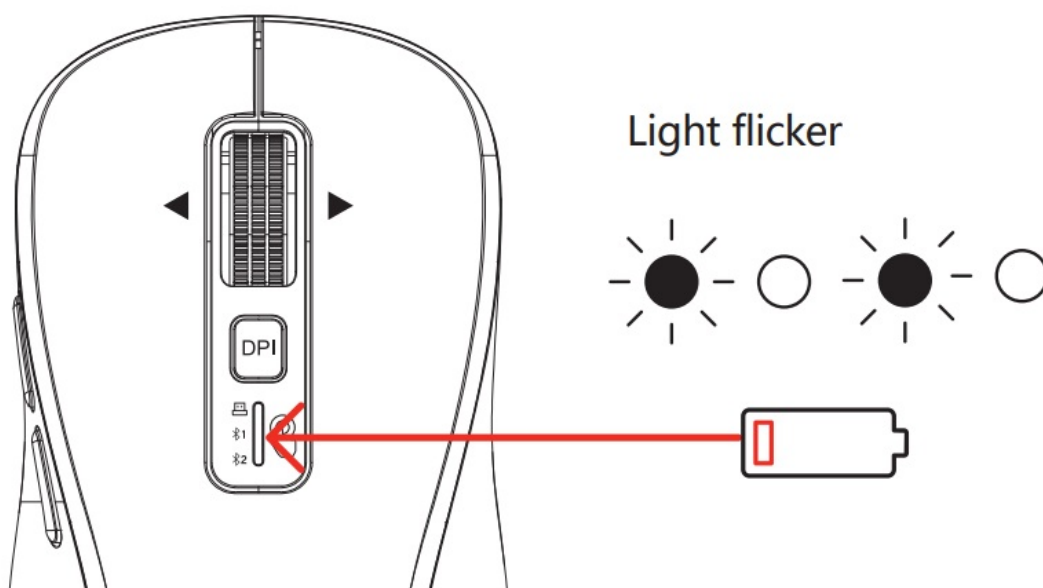
DPI Adjustment

Click the DPI button to adjust the different DPI speed, It can be judged by the number of times the light flicker.



Low battery indicator light

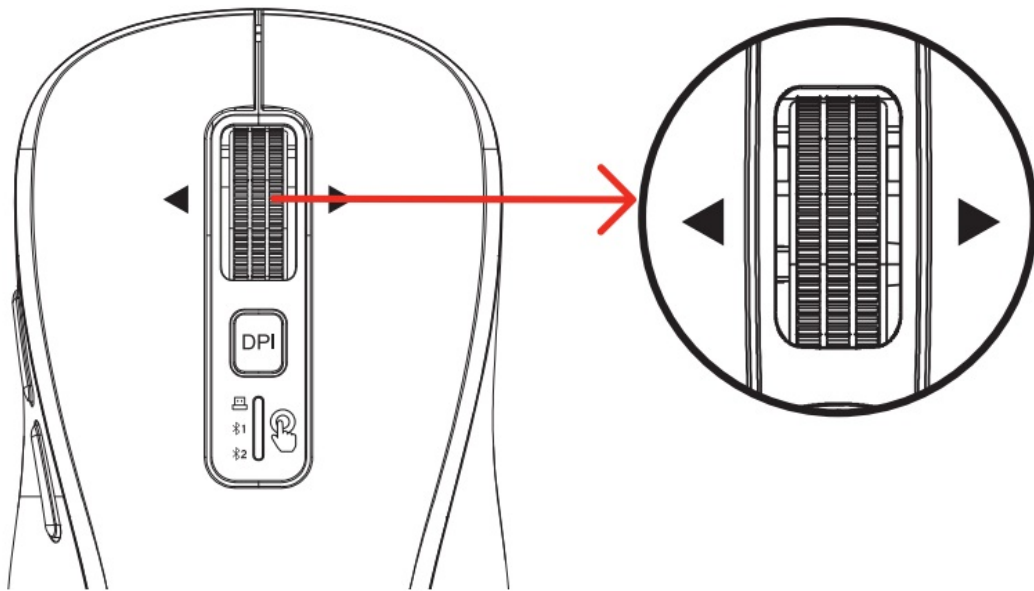
When the mouse battery is low and the expected use time is less than 7 days, the low battery warning light will automatically light up and flicker (corresponding light), at this time, please charge in time.



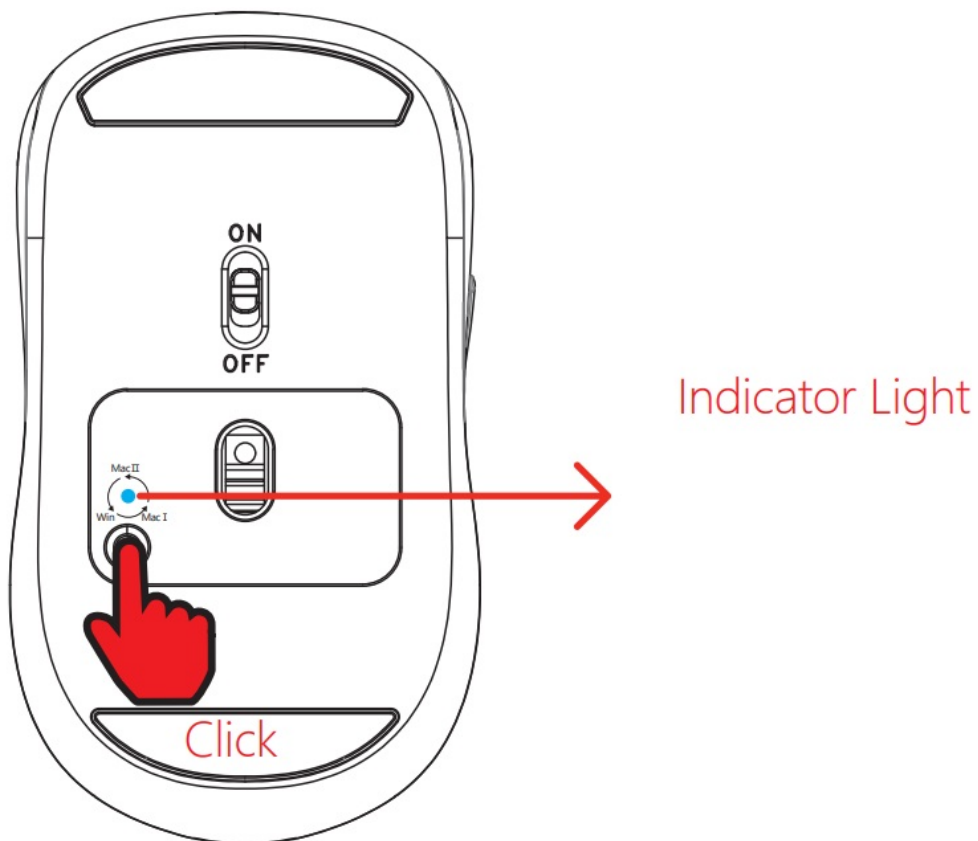
Smart Flying Scroll

Smart Flying Scroll Wheel&Left scroll&Right scroll

- When you are browsing an Excel file or a website, you could go to the top or bottom of the file or website quickly by giving the scroll wheel a up or down speed.
- When you are browsing an Excel file or a website, you could go to the left side or right side of the file or website quickly by pressing the scroll wheel to the left or right.



About using on Mac OS



⌚ Short Click, bottom LED flashes twice

Windows OS



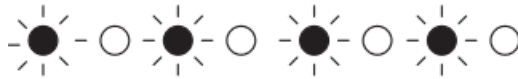
⌚ Short Click, bottom LED flashes 3 times

Mac I OS



Short Click, bottom LED flashes 4 times

MacII OS



Long-press for 5S the bottom LED will be on for 2S. Restore factory defaulted setting. Three channels for Windows OS.

Windows OS

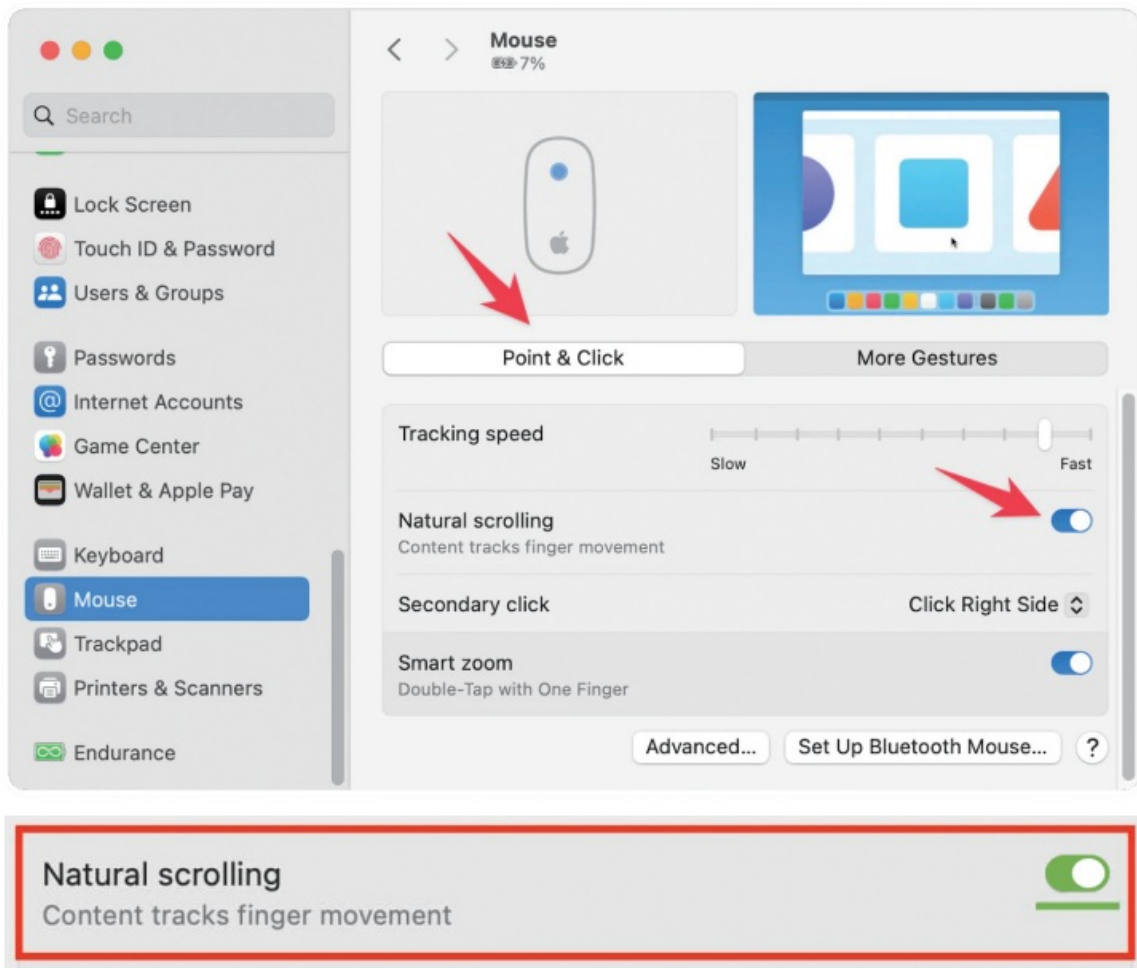


When you connect this mouse with your Mac,the function of Back and Forward buttons may be unavailable if you do not switch the system button at the bottom of mouse.

Please switch to corresponding system(MacI and MacII)based on the system language you are using listed as below.

MacI Support Language	MacII Support Language
Chinese	German
English	Spanish
Russian	Italian
Arabic	Portuguese
Japanese	Norwegian
Korean	Icelandic
French	Swedish
Greek	Danish
Czech	Finnish
Belgian	
Canadian	
Irish	
Brazilian	
Farsi	
Faroese	
Romanian	
Dutch	

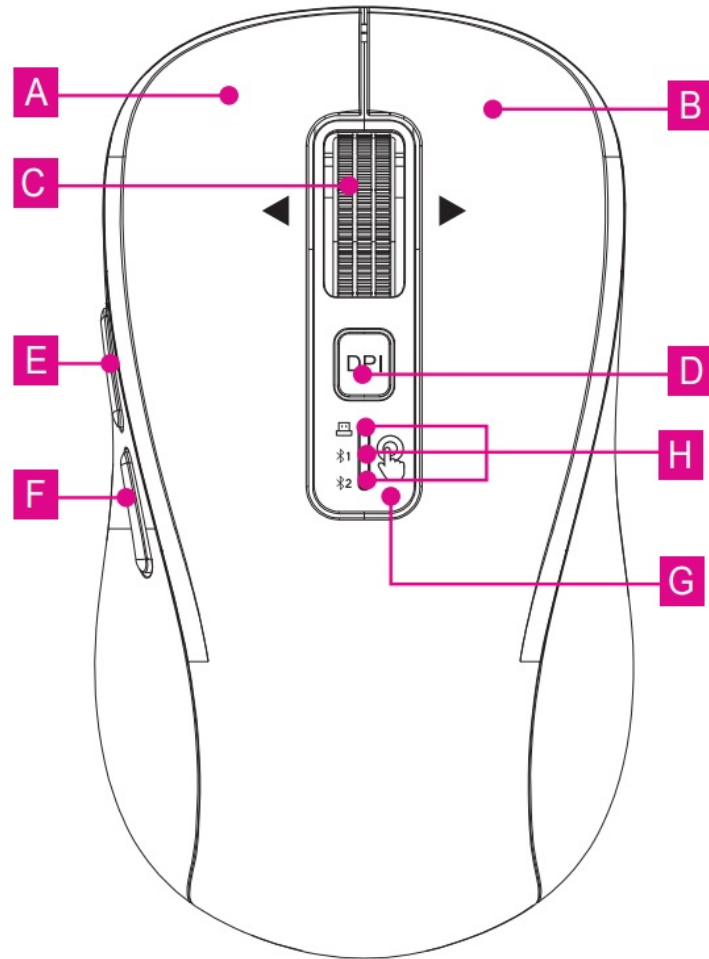
About mouse wheel direction on Mac OS

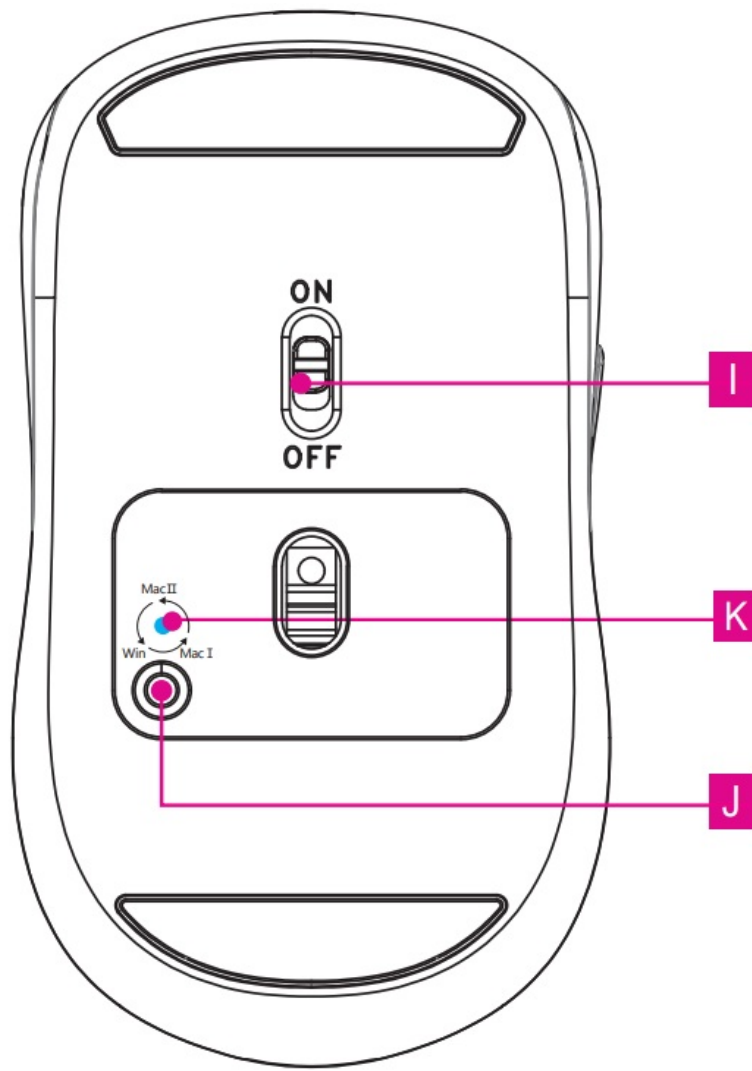


Mouse Wheel Direction Adjustment on Mac OS




1. Open the computer Settings, go to the Mouse Settings page, open "Natural scrolling".
2. Click the System switch button (red button) at the bottom of the mouse to switch to Mac.

Functions












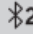
Windows

A	Left Button
B	Right Button
C	Smart Flying Scroll Wheel *
D	DPI Button
E	Forward Button
F	Back Button
G	Devices Switch Button
H	Devices Indicators:  2.4G White Indicator  1 Bluetooth 1 Blue Indicator  2 Bluetooth 2 Green Indicator
	DPI Indicator
	Low power indicator
I	ON/OFF Button
J	Windows/Mac OS Switch Button
K	OS indicator light

Mac I

A	Left Button
B	Right Button
C	Smart Flying Scroll Wheel *
<div> Natural scrolling Content tracks finger movement  </div>	
D	DPI Button
E	Forward Button(Command+])
F	Back Button(Command+[)
G	Devices Switch Button
H	Devices Indicators:  2.4G White Indicator  Bluetooth 1 Blue Indicator  Bluetooth 2 Green Indicator
	DPI Indicator
	Low power indicator
I	ON/OFF Button
J	Windows/Mac OS Switch Button
K	OS indicator light

Mac II

A	Left Button
B	Right Button
C	Smart Flying Scroll Wheel *
<div> Natural scrolling Content tracks finger movement  </div>	
D	DPI Button
E	Forward Button(Command+' ')
F	Back Button(Command+;)
G	Devices Switch Button
H	Devices Indicators:  2.4G White Indicator  Bluetooth 1 Blue Indicator  Bluetooth 2 Green Indicator DPI Indicator Low power indicator
I	ON/OFF Button
J	Windows/Mac OS Switch Button
K	OS indicator light

Refer to item 11(Mac defaulted setting)

FCC STATEMENT

Warning

This device complies with Part 15 of the FCC Rules. Operation is subject to the following two conditions:

1. This device may not cause harmful interference, and
2. this device must accept any interference received, including interference that may cause undesired operation.

NOTE

1. This equipment has been tested and found to comply with the limits for a Class B digital device, pursuant to part 15 of the FCC Rules. These limits are designed to provide reasonable protection against harmful interference in a residential installation. This equipment generates, uses and can radiate radio frequency energy and, if not installed and used in accordance with the instructions, may cause harmful interference to radio communications. However, there is no guarantee that interference will not occur in a particular installation.

If this equipment does cause harmful interference to radio or television reception, which can be determined by turning the equipment off and on, the user is encouraged to try to correct the interference by one or more of the following measures:


- Reorient or relocate the receiving antenna.
- Increase the separation between the equipment and receiver.
- Connect the equipment into an outlet on a circuit different from that to which the receiver is connected.
- Consult the dealer or an experienced radio/TV technician for help.

NOTE

Any changes or modifications to this unit not expressly approved by the party responsible for compliance could void the user’s authority to operate the equipment.

The device has been evaluated to meet general RF exposure requirement. The device can be used in portable exposure condition without restriction.

Documents / Resources

	INFINMIND PRO MX E510 Wireless Mouse Smart Fly Scrolling [pdf] User Manual PRO MX E510 Wireless Mouse Smart Fly Scrolling, PRO MX E510, Wireless Mouse Smart Fly Scrolling, Smart Fly Scrolling, Scrolling
---	---

References

- [User Manual](#)

[Manuals+.](#) [Privacy Policy](#)

This website is an independent publication and is neither affiliated with nor endorsed by any of the trademark owners. The "Bluetooth®" word mark and logos are registered trademarks owned by Bluetooth SIG, Inc. The "Wi-Fi®" word mark and logos are registered trademarks owned by the Wi-Fi Alliance. Any use of these marks on this website does not imply any affiliation with or endorsement.