



InfinityLAB Clear Call Portable USB and Bluetooth Speakerphone User Guide

[Home](#) » [InfinityLAB](#) » InfinityLAB Clear Call Portable USB and Bluetooth Speakerphone User Guide 

Contents

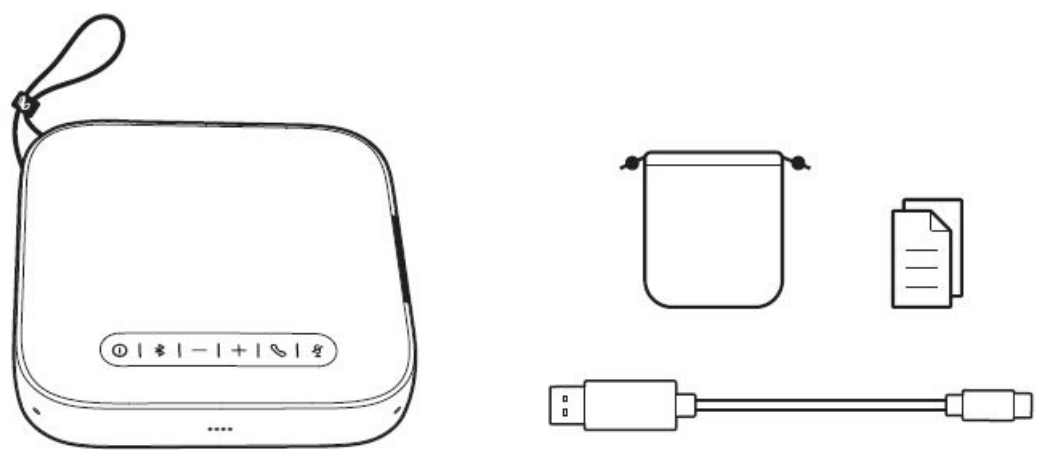
- [1 InfinityLAB Clear Call Portable USB and Bluetooth Speakerphone](#)
- [2 WHAT'S IN THE BOX](#)
- [3 OVERVIEW](#)
- [4 CONNECT BLUETOOTH](#)
- [5 CONNECT USB](#)
- [6 CHARGING](#)
- [7 POWERBANK](#)
- [8 LED BEHAVIOR](#)
- [9 BLUETOOTH](#)
- [10 Documents / Resources](#)
- [11 Related Posts](#)



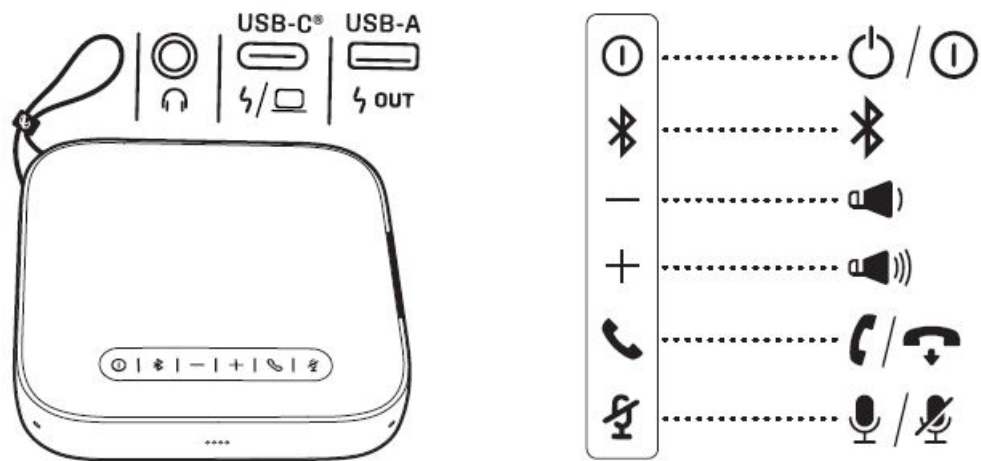
InfinityLAB Clear Call Portable USB and Bluetooth Speakerphone



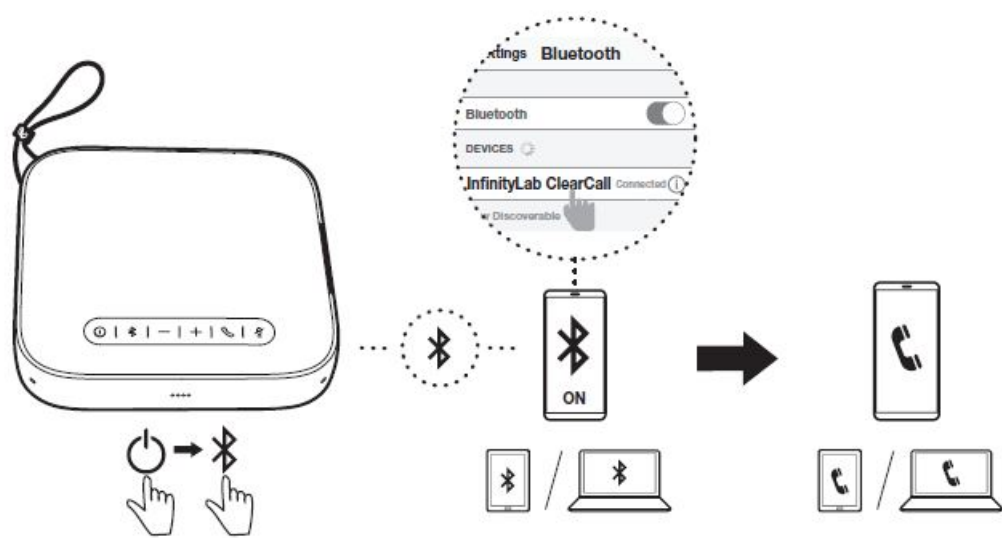
WHAT'S IN THE BOX



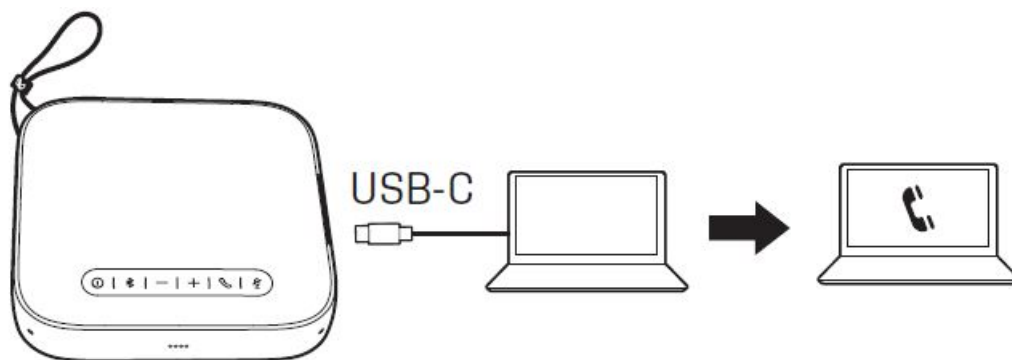
OVERVIEW



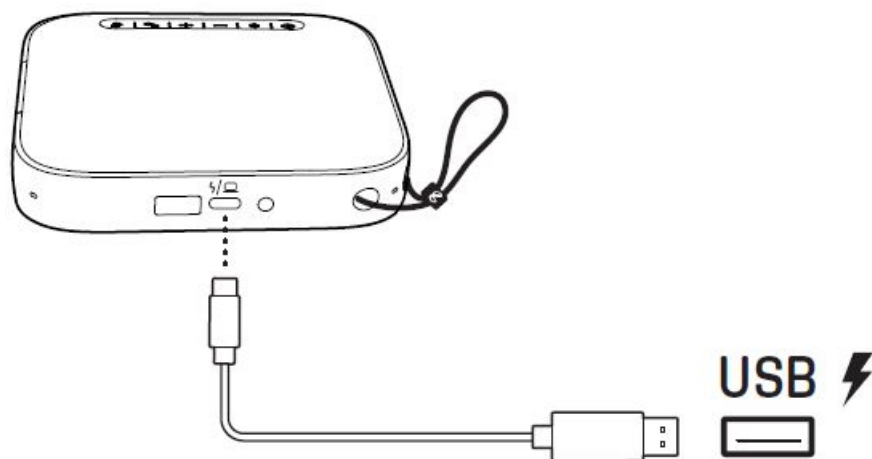
CONNECT BLUETOOTH



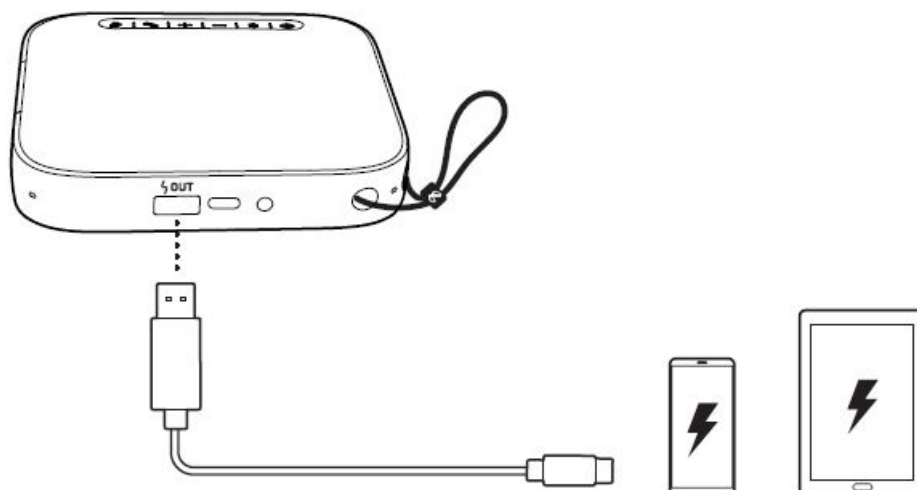
CONNECT USB



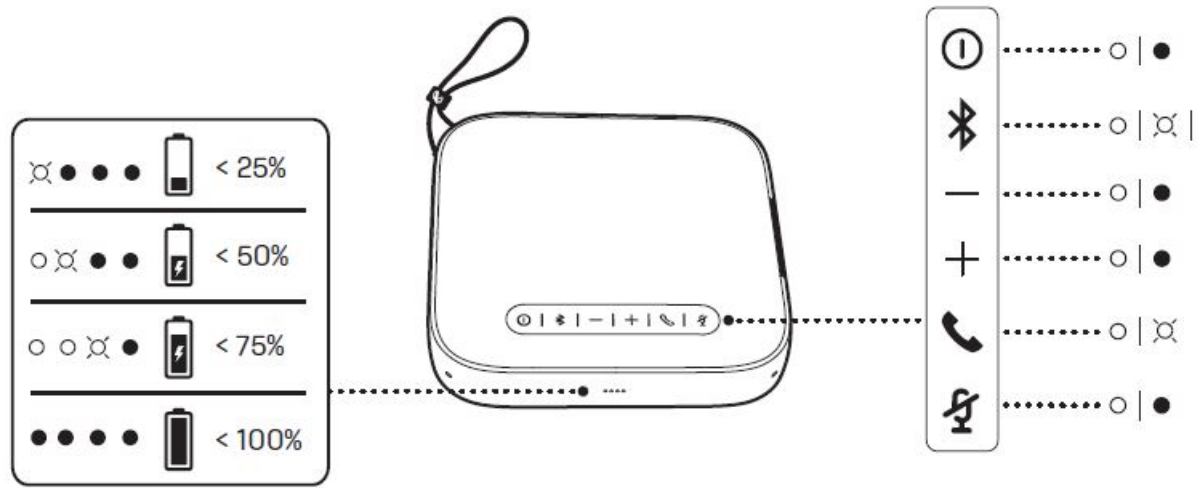
CHARGING



POWERBANK



LED BEHAVIOR



- Talk time/ Music playing time:
- Output power:
- Lithium battery:
- Battery charge time:
- Charging output:
- Bluetooth version:
- Bluetooth transmitter power:
- Bluetooth transmitter frequency range:
- Dimension (L x W x D)

BLUETOOTH

The Bluetooth® word mark and logos are registered trademarks owned by Bluetooth SIG, Inc. and any use of such marks by HARMAN International Industries, Incorporated is under license. Other trademarks and trade names are those of their respective owners.

Documents / Resources

