


DSP6840
DSP
Amplifier



Infinity DSP6840 DSP Amplifier Owner's Manual

[Home](#) » [Infinity](#) » Infinity DSP6840 DSP Amplifier Owner's Manual 

Contents

- [1 Infinity DSP6840 DSP Amplifier](#)
- [2 PRODUCT DESCRIPTION](#)
- [3 INSTALLATION AND WIRING](#)
- [4 SETTING THE SOUND](#)
- [5 User Interface Functions](#)
- [6 SPECIFICATIONS](#)
- [7 TROUBLESHOOTING](#)
- [8 DSP Amplifiers](#)
- [9 DSP Amplifiers Speakers](#)
- [10 Technical Specifications](#)
- [11 IMPORTANT SAFETY INSTRUCTIONS](#)
- [12 Federal Communication Commission Interference Statement](#)
- [13 Documents / Resources](#)
 - [13.1 References](#)
- [14 Related Posts](#)



Infinity DSP6840 DSP Amplifier



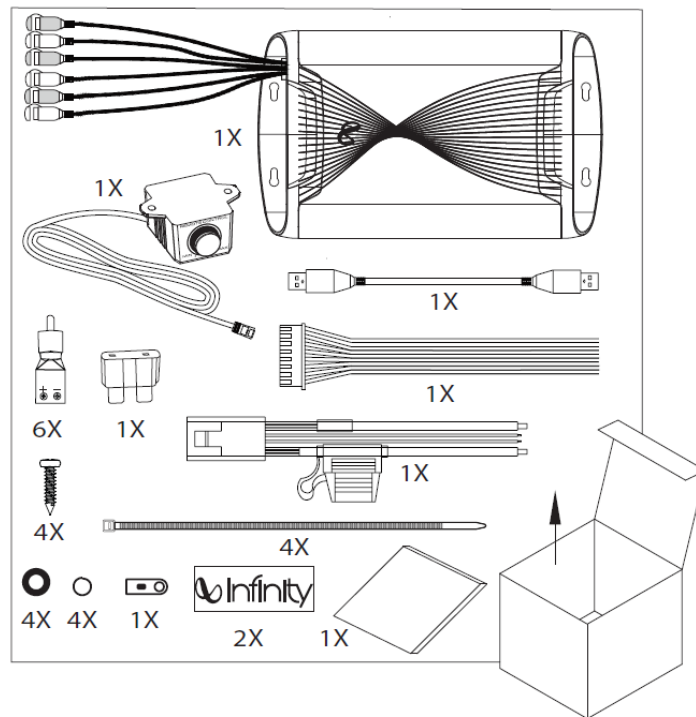
THANK YOU FOR YOUR PURCHASE . . .

Your product has been designed to provide you the performance and ease of operation you expect from Infinity. Take time to read this manual before operating or installing your amplifier. This manual describes general installation guidelines and operation instructions. Please note that proper installation of mobile audio components requires qualified experience with mechanical and electrical procedures. If you do not have the knowledge and tools to perform this installation, we strongly recommend consulting an authorized Infinity dealer about your installation options.

PRODUCT DESCRIPTION

The Infinity DSP Amplifier is an audio processor for fine-tuning of aftermarket audio systems. It is a self-contained audio system with 6-channel audio inputs, 8-channel powered audio outputs, an easy-to-use tuning interface a novice can understand, and detailed tuning capabilities to satisfy even experienced installers. With a USB connection to access the tuning interface using a Windows PC, you can control fully variable crossovers, selectable 0-to-48 dB slopes, time delay, 31-band parametric or graphic EQ adjustment, assignable input-to-output mixer with input channel summing, channel gain, master volume control, clipping indicator to ensure the audio output is not distorted, and ability to save up to 10 presets.

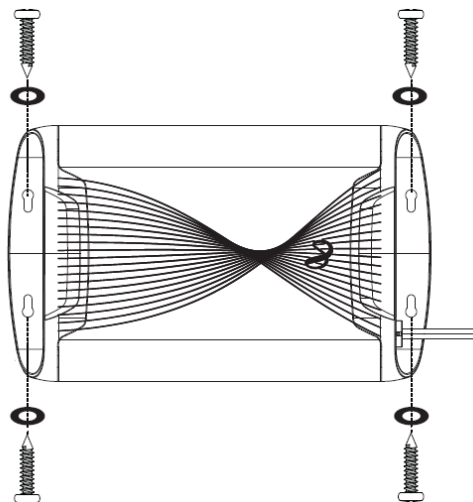
WHAT'S IN THE BOX



INSTALLATION AND WIRING

IMPORTANT: Disconnect the vehicle's negative (–) battery terminal before beginning the installation.

- Wear protective eyewear when using tools.
- Choose a safe mounting location. Check clearances on both sides of the location. Be sure that screws will not puncture brake or fuel lines or wiring harnesses, and that wire routing will not interfere with vehicle operation. Use caution when drilling or cutting.
- When making electrical connections, make sure they are secure and properly insulated.
- Do not mount the amplifier with the heat sink facing downward, as this interferes with cooling.
- Using the amplifier as a template, mark the locations of the holes on the mounting surface.
- Drill pilot holes in the mounting surface.
- Attach the amplifier to the mounting surface with the included sheet metal screws and washers.

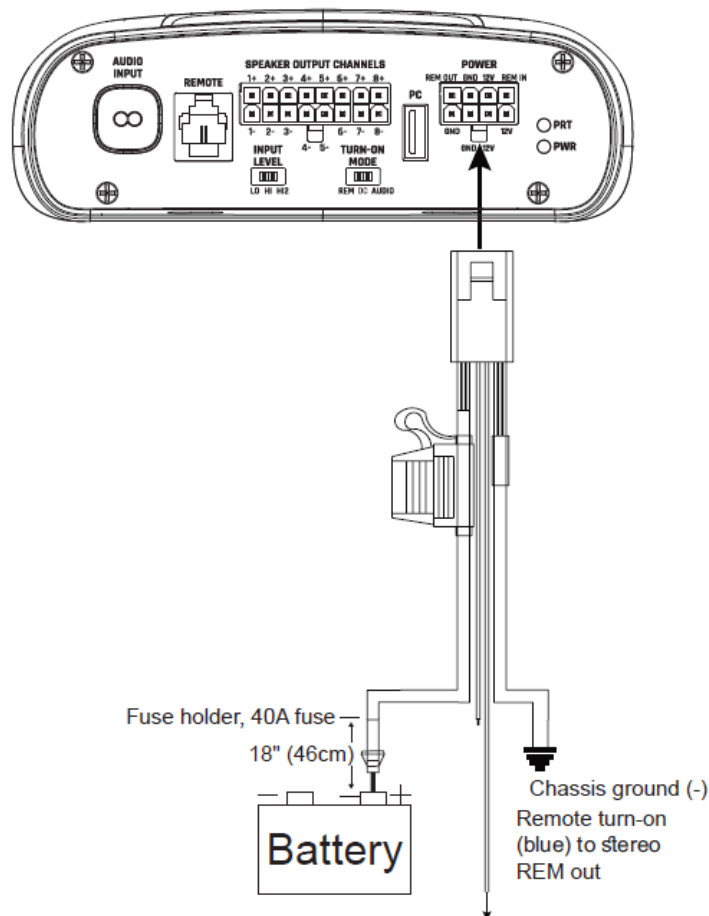


Power and Ground Connections

- **Power:** Connect the +12V power wire to the positive terminal of the vehicle's battery. Make sure the fuse and fuse holder are within 18" (457mm) of the battery.
- **Ground:** Connect the GND wire to the negative terminal of the vehicle's battery, or to the vehicle's chassis near the battery with a screw. NOTE: If possible, remove any paint from the chassis for best contact. It is recommended to use a star washer below the ring connector for a secure connection.
- **Remote-In:** Connect the remote turn-on wire to the "Remote Out" lead of the source unit, if using low-level signal inputs with an aftermarket stereo. NOTE: If you are using high-level signal inputs (your vehicle's speaker wires), you can choose to have the 12-volt DC offset feature turn the amplifier on when you turn on the vehicle power, or the audio-sensing feature turn on the amplifier when it detects audio signal. In either case, you will not have to connect the remote turn-on wire and can tape or cap it off to prevent the introduction of noise.
- **Remote-Out:** Connect the remote-out wire to external devices that require 12V turn-on after the Infinity DSP Amplifier. This connection will allow turn-on of 12V devices after the amplifier wakes from turn-on by 12V remote-in, DC offset or audio signal sensing input.

Power/Protect indicators

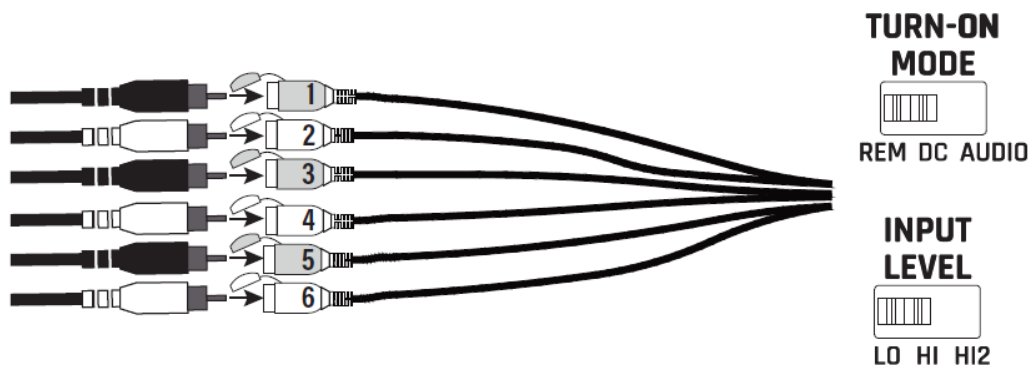
The power light will illuminate in green when the amplifier is getting power and playing. The light will illuminate in red if the amp enters protect mode in the event of conditions such as over/under voltage, short circuit, amplifier output circuit failure, or excessive heat.



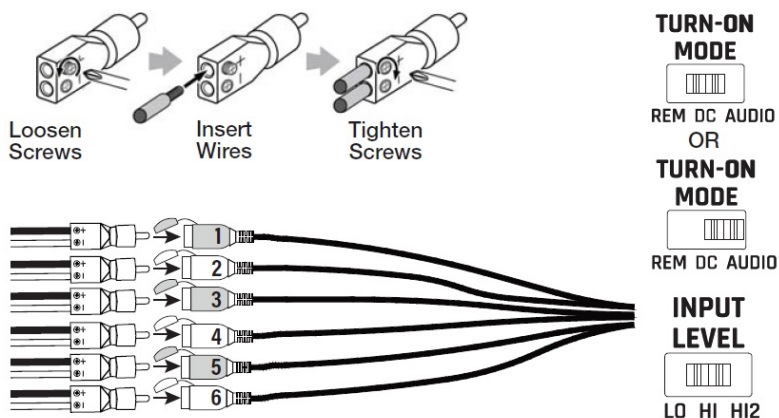
Signal input

- **Line-level inputs:** If your source unit offers preamp outputs, connect the front outputs to inputs 1 and 2 on the amplifier, the rear outputs to inputs 3 and 4, and the subwoofer outputs to inputs 5 and 6 using RCA patch cables.

- **Note:** when using low-level signals and remote turn-on lead, set the “Turn-on Mode” switch to “REM” and the “Input Level” switch to “LO”.



- **High-level inputs:** If your audio system’s source unit does not have line-level outputs, use the supplied high-level input adapters to connect to the speaker output wires of your source unit to the RCA inputs of the amplifier. The 12-volt DC offset feature will turn the amplifier on when it senses signal.
- **NOTE:** You can connect the wires from as many as six of your vehicle’s speakers to the amplifier. For example, these can include front left and right tweeters to inputs 1 and 2, front left and right woofers to inputs 3 and 4, and rear left and right full-range speakers to inputs 5 and 6. The signals from each of these speakers can be summed to create a full-range output, if necessary, and assigned to any of the amplifier output wires. See “Setting the Sound” for more details.
- **NOTE:** When using high-level signals, set the “Turn-on Mode” switch to “DC” (to turn on when it receives battery power) or “AUDIO” (to turn on when it senses signal from your source unit), and the “Input Level” switch to “HI”. If no sound plays, change the “Input Level” switch to “HI2”.

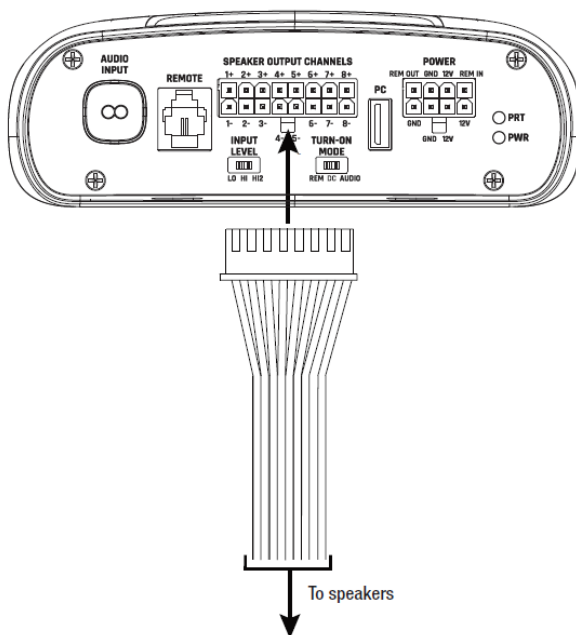


Speaker Output Connections

Connect your speakers to the wires of the speaker output wiring harness, observing proper polarity: connect each positive (+) lead to the appropriate positive (+) speaker terminal, and negative (-) lead to the appropriate negative (-) speaker terminal. Then plug the speaker output wiring harness into the DSP Amplifier.

- **NOTE:** You can connect up to 8 speakers to the Infinity DSP Amplifier, then specify the frequencies the amplifiers sends to each one with the Infinity tuning software. See “Setting the Sound” for details.
- **NOTE:** If you decide you need more power in your system, you can use two or more of the speaker output wires to connect one or more additional amplifiers. Connect the desired number of speaker output wires to the high-level inputs of the new amplifier(s).

- **IMPORTANT:** make sure to adjust the output levels of the channels you are connecting to the extra amplifier(s) to ensure that you do not overdrive the external amplifier(s) and reduce noise, if present.
- **IMPORTANT:** None of the speaker output channels can be bridged.



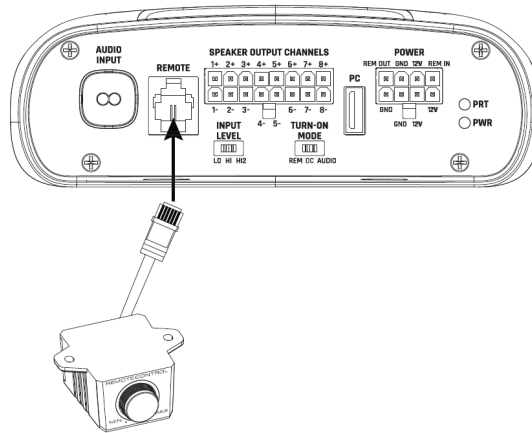
Wire color	Channel designation
White	Channel 1 +
White/Black	Channel 1 –
Gray	Channel 2 +
Gray/Black	Channel 2 –
Green	Channel 3 +
Green/Black	Channel 3 –
Purple	Channel 4 +
Purple/Black	Channel 4 –
Orange	Channel 5 +
Orange/Black	Channel 5 –
Blue	Channel 6 +
Blue/Black	Channel 6 –
Red	Channel 7 +
Red/Black	Channel 7 –
Yellow	Channel 8 +
Yellow/Black	Channel 8 –

Connecting the remote bass control

Plug the remote bass controller into the appropriate input on the control panel of the DSP Amplifier. Mount the

remote in a convenient location, such as under the dash, using sheet metal screws.

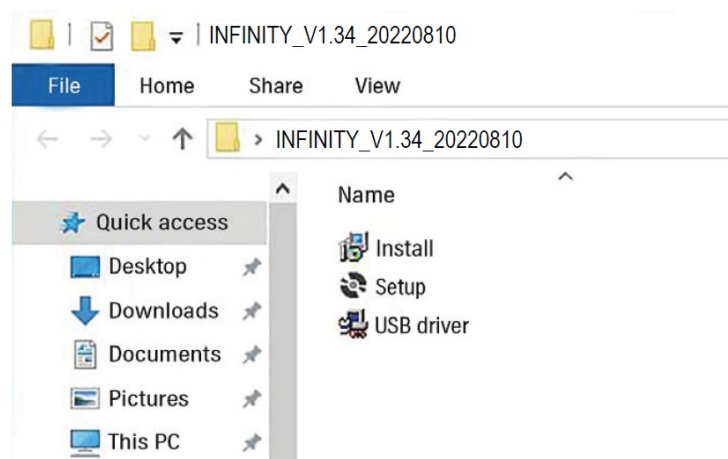
NOTE: The remote bass control is capable of controlling the subwoofer output level from channel 7 or 8 when assigned as a “sub” channel. This will allow adjustment of subwoofer level from -30dB to +6db in the tuning software. It is not a bass boost control. We expect that you will use the remote bass control from an external subwoofer amplifier should you want to control bass boost.



SETTING THE SOUND

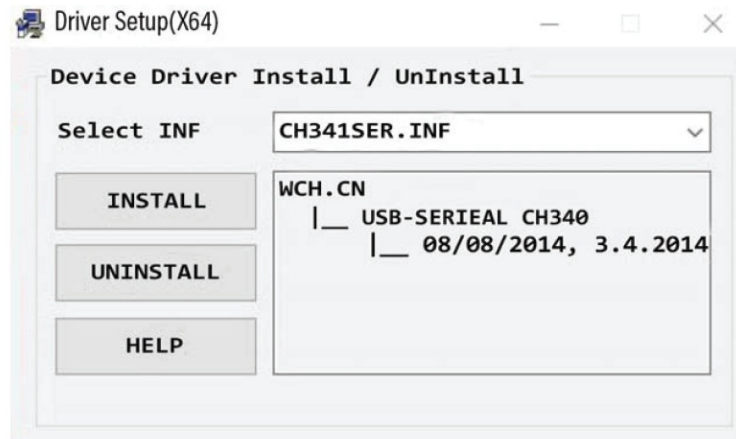
Download the tuning software from infinityspeakers.com

1. Connect to the internet with your Windows PC or laptop and go to infinityspeakers.com to download the most current Graphic User Interface for the DSP6840 Amplifier, or use the included USB flash drive.
2. Complete the software installation setup wizard before you connect your computer to your Infinity DSP Amplifier.
3. Double-click “Infinity DSP software” from its saved location.



4. Double-click “USB driver” and click install

NOTE: Make sure to allow it to make changes to your computer if your anti-virus software requests it.

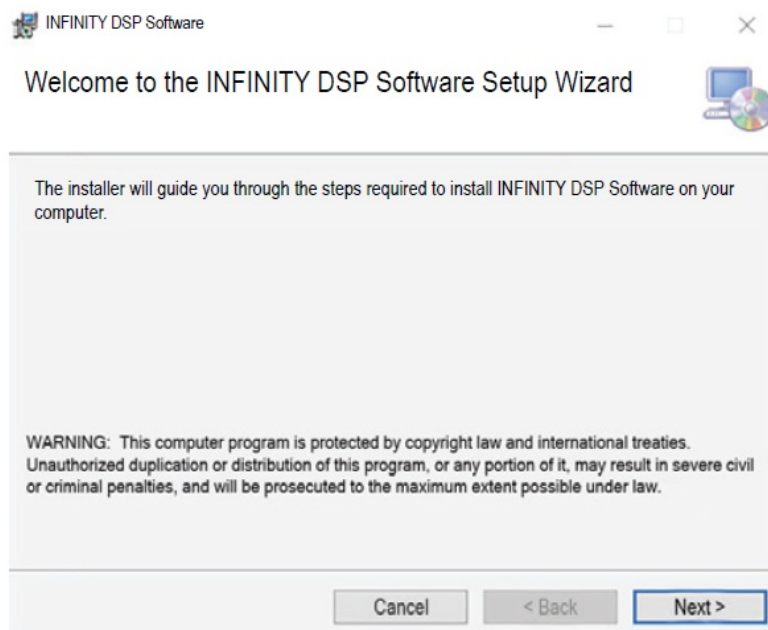


5. Double-click “setup.exe”.

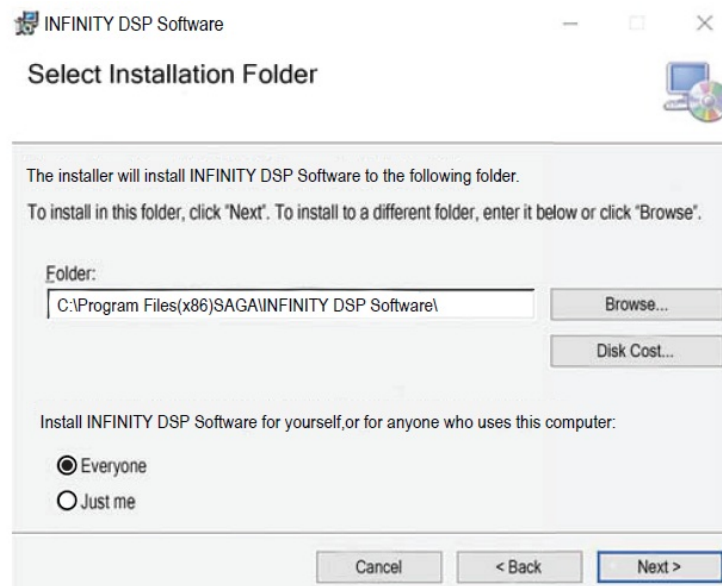
NOTE: Make sure to allow it to make changes to your computer if your anti-virus software requests it.

INFINITY DSP Software

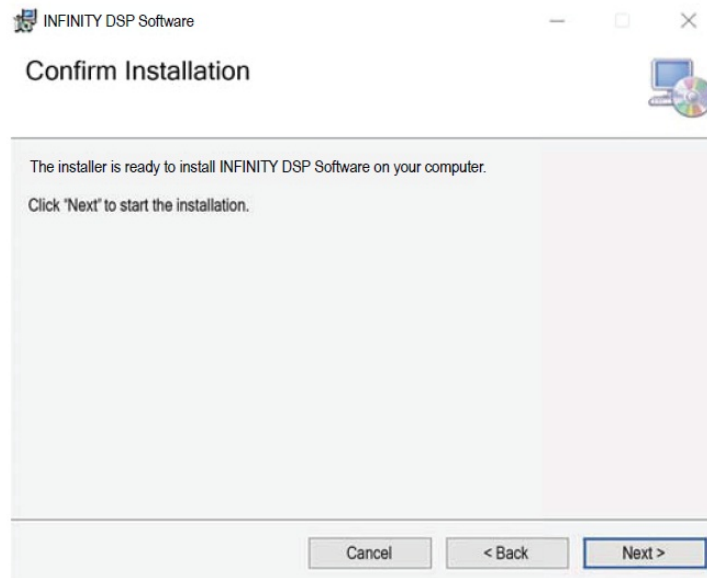
Welcome to the INFINITY DSP Software Setup Wizard



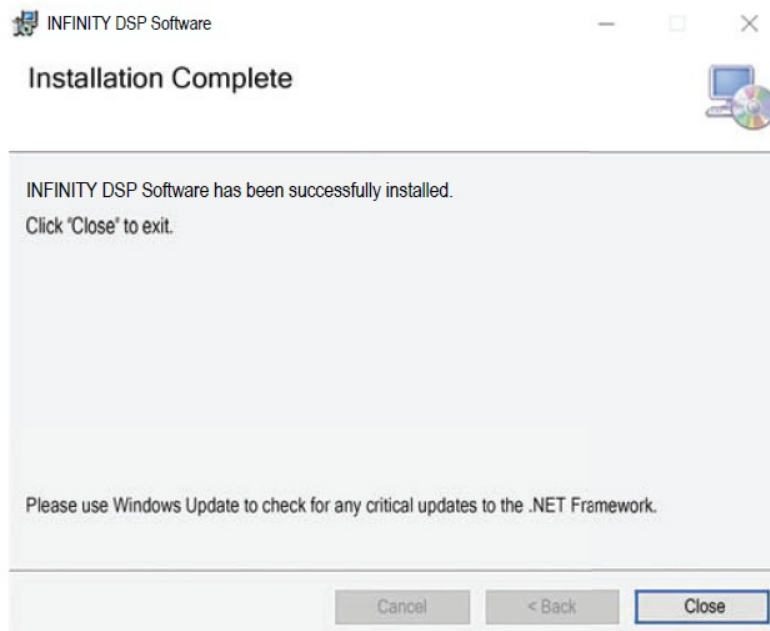
6. Click “Next” in the Infinity DSP Software Setup Wizard.



7. Select preferred installation folder, or click “next” to choose the default location.



8. Click “Next” to confirm installation. Again, make sure that your anti-virus protection allows installation to be completed.
9. Sit back and wait while software installation completes...

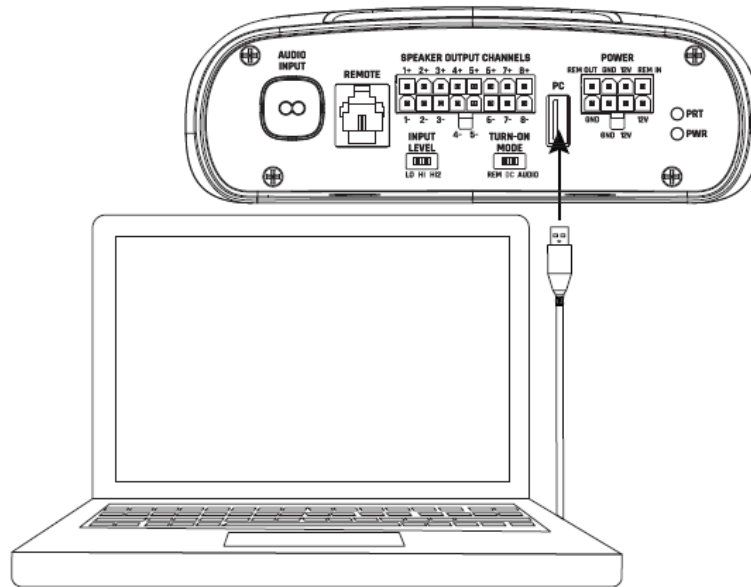


10. Installation Complete! Close setup wizard and continue to next section. You should see this icon on your computer screen.



Connecting Infinity DSP Amplifier to your Windows PC

1. Connect your Windows PC to the DSP Amplifier with the included USB cable.



2. Make sure to turn your audio source down to a low volume level before powering your Infinity DSP Amplifier.
3. Activate/power your audio system and make sure all parts are operating.

NOTE: The DSP Amplifier will come with pre-flashed EQ profile that will act as “EQ Off” or preset 1.

4. With your PC connected to the Infinity DSP Amplifier, double click Infinity software icon on your PC and open DSP tuning software.



NOTE: If the software appears with a window showing “No Comm Port Available”, close the software, disconnect the USB cable from your computer, and return to step 4. Otherwise, proceed to step 5. The DSP software will function when not connected to the amplifier if you would like to familiarize yourself with the software and create a pre-configured audio system setup.



5. Connection complete! Continue on to Tuning Procedure...

User Interface Functions



The Infinity tuning software features the following controls:

1. Assign speaker locations to channels. With this feature, you can designate the type of speaker and location in the car each output channel of the DSP is connected to.
2. Individual channel volume control and muting. You can raise and lower the relative volume level of each channel individually to ensure perfect level-matching and output.
3. 0°/180° phase adjustment. You can set the phase of each channel individually for balanced, dynamic performance.
4. Linking of paired channels. You can link paired channels to apply volume and tone controls evenly.
5. Clipping indicator. Each channel features a clipping indicator to let you know if 10% or greater distortion is present. If it is, lower the volume level of the clipping channel until the indicator turns off. For best results, measure with a 100Hz and 1kHz @ 0dB sine wave.
6. Time delay. With time delay, you can adjust the focal point of the sound field to your desired location in the car. The closer a speaker is to your desired focal-point location, the longer its delay should be. To adjust, drag the slider to the right to increase the delay, and to the left to decrease it.
7. Information display. This display shows you the following statistics:
 - a. The master volume value
 - b. The current subwoofer volume level for channel 7 or 8, and adjustable from -30dB to +6dB when using the remote bass control.
 - c. The voltage the amplifier is reading at the power input
 - d. The amplifier's current operating temperature
 - e. Your current system configuration.
8. X-OVER. You can adjust the crossover points of the highpass and low-pass crossovers for each channel to maximize the performance efficiency of each speaker connected to the DSP Amplifier. The selectable crossover slope for each channel can be set to 0/6/12/18/24/30/36/42/48dB.
9. Speaker location view. This shows which amplifier channels are in use, and the locations of the corresponding speakers in the vehicle.
10. Master Volume. You can raise or lower the volume of the entire system, or mute the entire system. Drag the

slider up to raise the volume, and down to lower it. Click the speaker icon to mute the audio system.

11. Write/Delete. "Write" lets you save up to 10 preferred audio settings as presets, which you can apply to the amplifier. Click "write", then click a preset number to save a preset. Click "delete", then click a preset number to delete a preset.
12. Input Mixer. The Input Mixer feature lets you assign the audio signal from an input channel to a specific output channel. You can also sum the signals of multiple input channels and apply the resulting signal to a specific output channel, usually to allow a speaker to play the widest range of frequencies possible when using speaker-level input signals.
EXAMPLE: If you have connected a tweeter (high-frequency response only) to input channel 1 and a midrange speaker (midrange-frequency response only) to channel 2, you can sum the signals of each of these inputs, and assign the new, full-range signal to a full-range speaker you have connected to output channel 1.
13. Save File. This allows you to save saving a preferred audio system configuration to a folder on your computer for use later. It also allows you to retrieve a previous configuration from your computer and apply it to your connected amplifier.
14. Settings. You can control the following options in the "Settings" menu:
 - a. Language selection for the software: choose from English, Spanish, French, Chinese, and Japanese.
 - b. Power settings for delaying the amplifier turn-on/off should your vehicle require either option.
 - c. Firmware upgrades and resetting the software to original factory settings.
15. Reset EQ. This button lets you reset the type of speaker, and location in the vehicle, of each output channel.
16. EQ Mode. This lets you choose either a 31 band parametric or graphic EQ to adjust for each channel.
17. Parametric or graphic EQ. You can apply custom EQ curves to each channel you have connected. To increase the level of a given frequency, drag the slider up. To lower it, drag the slider down.
18. EQ Setup. This EQ setup feature lets you click to select the channels to which you want to apply EQ curves.
NOTE: The FREQ, GAIN, and Q fields shows the values of the changes made by moving the EQ sliders. Only Gain is adjustable when in Graphic EQ Mode. Frequency, Gain, and Q are all adjustable in Parametric EQ Mode. These adjustments can be made using the sliders or entering specific values in the F, G, and Q fields.
19. Bypass EQ and Restore EQ. "Bypass EQ" allow you to return your EQ settings to flat so you can hear the differences made during your tuning. "Restore EQ" returns all EQ adjustments to the previous settings.

SPECIFICATIONS

- RMS Power Output (Watts x Channel) @ 2-ohm: 60W x 8
- RMS Power Output (Watts x Channel) @ 4-ohm: 40W x 8
- Amplifier Class: Class D
- Battery Voltage Range (Volts): 8V to 16V
- Selectable Turn-on Modes: 12V, Audio Signal Sense, DC Offset, 12V remote output
- LED Indicator: red/green
- Frequency Response: 10Hz to 22kHz @ -3dB
- Signal-to-Noise Ratio: 90dB
- Signal-to-Noise Ratio (CEA-2006): 75dB
- THD+N @ 4-ohm: <1%
- Input Sensitivity, selectable: High-level or low-level
- Input Sensitivity – Low Level: 680mV to 6V

- Input Sensitivity – High Level: 1.6V to 15V
- Variable Crossovers: All Channels: HPF, LPF, Band-pass w/ selectable 0 to 48dB slope
- Gain, variable: All Channels with PC
- Subwoofer level, variable: Channels 7 & 8 in PC software or using accessory remote control from -30dB to +6dB
- Fuse Rating: 40A
- Minimum Recommended Power/Ground Wire Gauge: 8awg
- Speaker Level Inputs: Yes (RCA adapter)
- Remote Bass Control: Included
- Length : 9-3/8" (237.5mm)
- Width: 5-11/16" (144mm)
- Height: 1-15/16" (49.5mm)
- Weight: Approx. 1000g
- Protection: DC, OVP, UVP, OCP, OTP

TROUBLESHOOTING

- **No audio and POWER INDICATOR is off.**

No voltage at BATT+ and/or REM terminals, or bad or no ground connection. Check voltages at amplifier terminals with VOM.

- **No audio and PROTECT INDICATOR flashes.**

DC voltage on amplifier output. Amplifier may need service; see enclosed warranty card for service information.

- **No audio and PROTECT and POWER INDICATORS flash.**

Voltage less than 9V on BATT+ connection. Check vehicle charging system.

- **No audio and PROTECT INDICATOR is on.**

Amplifier is overheated. Make sure amplifier cooling is not blocked at mounting location. Verify that speaker-system impedance is within specified limits. Or, there may be voltage greater than 16V (or less than 8V) on BATT+ connection. Check vehicle charging system.

- **Amplifier fuse keeps blowing.**

The wiring is connected incorrectly or there is a short circuit. Review installation precautions and procedures. Check wiring connections.

- **Distorted audio.**

Gain is not set properly. Check Individual Channel Volume and/ or Master Volume settings. Check speaker wires for shorts or grounds. Amplifier or source unit may be defective.

- **Distorted audio and PROTECT INDICATOR flashes.**

Short circuit in speaker or wire. Remove speaker leads one at a time to locate shorted speaker or wire, and repair.

- **Music lacks dynamics or "punch."**

Speakers are not connected properly. Use 0°/180° phase adjustment, and check speaker connections at amplifier and speaker.

DSP Amplifiers

Engineered for the ultimate sound experience

Infinity DSP Amplifier is an audio processor for fine-tuning of aftermarket audio systems. It is a self-contained audio system with 6-channel audio inputs, 8-channel powered audio outputs, an easy to use tuning interface a novice can understand and detailed tuning capabilities to satisfy even experienced installers. With a USB connection to access the tuning interface using a Windows PC, you can control fully variable crossovers, selectable 0-to-48dB slopes, time delay, 31-band parametric or graphic EQ adjustment, assignable input to output mixer with input channel summing, channel gain, master volume control, clipping indicator to ensure the audio output is not distorted and ability to save up to 10 presets.

Features

- Small footprint, All-in-One Class D Amplifier with DSP Control
- Everything You Need to Get Started
- Simple Tuning Interface with Complex Features
- Versatile Connectivity
- Convenient Bass Control
- Conformal Coated PCB
- Harman Standard Reliability Testing
- Infinity Industrial Design

DSP Amplifiers Speakers



Features and Benefits

Small footprint, All-in-One Class D Amplifier with DSP Control Infinity DSP Amplifier has everything you need to create a professional sound quality audio system with the ability to mount your amplifier in tight spaces.

Everything You Need to Get Started

Infinity DSP Amplifier has everything you need to create an audio system, or expand your existing one, plus the ability to add more power by using it as a line driver when you are ready for your next power upgrade.

Simple Tuning Interface with Complex Features

Easy-to-use tuning interface anyone can understand, learn and control with enough horsepower to satisfy experienced installers. The Windows PC user interface includes variable crossover control, 0-to-48dB selectable slopes, 31-band parametric or graphic EQ adjustment, time delay in 0.2ms, output clipping indicator, assignable input to output mixer with input channel summing, output channel gain, master volume control, clipping indicator and ability to save up to 10 presets.

Versatile Connectivity

This amplifier has balanced differential inputs to provide you with the best sound quality & noise rejection, can accept RCA or speaker-level inputs so it'll work in almost any system, and the package includes screw-on RCA-to-bare wire adapters for the speaker-level signal. Plus, all wire connections are conveniently labeled to make installation a cinch.

Convenient Bass Control

Wired remote control allows for quick adjustment of low frequency output with -30 to +6dB adjustment directly from the driver's seat

Conformal Coated PCB

Your Infinity DSP Amplifier is engineered to withstand harsh conditions present in a wide variety of applications, using conformal coated circuit boards to ensure flawless power delivery, year after year.

Harman Standard Reliability Testing

Infinity is one of the greatest audio brands in the world. This is not a coincidence given the arduous testing and quality control. We take our craft seriously and want every consumer to have a world class experience that lasts and lasts.

Infinity Industrial Design

At Infinity, we take pride in our iconic design heritage. Our design team took great care to ensure that your Infinity DSP Amplifier will look amazing mounted wherever your music takes you. The smooth curve of the amplifier body, angular end cap design, and digitized Infinity logo all tie together with our classic, current and future design language while concentrating on the design of your lifestyle.

What's in the box

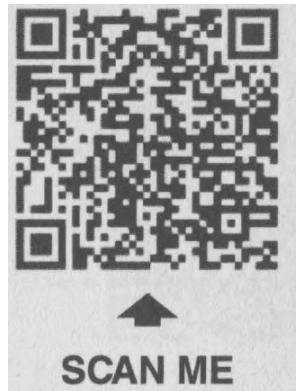
- DSP Amplifier
- Wiring Harness
- USB Drive with Tuning Software
- USB Tuning Cable
- Wired remote level bass control
- Mounting hardware
- 6x hi level input adapters
- Spare fuse
- 4x wire ties
- 2x Infinity sticker
- Quick Start Guide

Technical Specifications

- Max Power: 1000W peak
- RMS Power Output @ 2Ω: 60W x 8, <1% THD+N
- RMS Power Output @ 4Ω: 40W x 8, <1% THD+N
- Variable crossovers with hi-pass, lo-pass, band-pass capability & adjustable 0-to- 48dB slopes
- Selectable EQ adjustment: Parametric or Graphic
- Selectable 12V/Signal Sense/DC Offset turn-on modes, with 12V remote output
- Frequency Response 10Hz to 22kHz @ -3dB
- Signal-to-Noise Ratio: >90dB @ 4Ω
- Subwoofer Level Control -30dB to +6dB
- Fuse Rating: 40A
- Operating Voltage: 8V to 16V

Product Registration

register.infinityspeakers.com



Download the full warranty card and safety information and other helpful information from our website:
www.infinityspeakers.com/warrantyandsafetybooks

IMPORTANT SAFETY INSTRUCTIONS

1. Read these instructions.
2. Keep these instructions.
3. Heed all warnings.
4. Follow all instructions.
5. Clean only with a dry cloth.
6. Do not block any ventilation openings. Install this apparatus in accordance with the manufacturer's instructions.
7. Do not install this apparatus near any heat sources such as radiators, heat registers, stoves or other apparatus (including amplifiers) that produce heat.
8. Do not defeat the safety purpose of the polarized or grounding-type plug. A polarized plug has two blades with one wider than the other. A grounding-type plug has two blades and a third grounding prong. The wide blade or the third prong is provided for your safety. If the provided plug does not fit into your outlet, consult an electrician for replacement of the obsolete outlet.
9. Protect the power cord from being walked on or pinched, particularly at plugs, convenience receptacles and the point where they exit from the apparatus.
10. Use only attachments/accessories specified by the manufacturer.
11. Use only with the cart, stand, tripod, bracket or table specified by the manufacturer or sold with the apparatus.
When a cart is used, use caution when moving the cart/apparatus combination to avoid injury from tip-over.
12. Unplug this apparatus during lightning storms or when unused for long periods of time.
13. Refer all servicing to qualified service personnel. Servicing is required when the apparatus has been damaged in any way, such as when the power-supply cord or plug is damaged, liquid has been spilled or objects have fallen into the apparatus, or the apparatus has been exposed to rain or moisture, does not operate normally or has been dropped.
14. To disconnect this apparatus from the AC mains completely, disconnect the power-supply cord plug from the AC receptacle.
15. The mains plug of the power-supply cord shall remain readily operable.
16. This apparatus is intended to be used only with the power supply and/or charging cable provided by the

manufacturer.

The following instructions may not apply to waterproof devices. Refer to your device user manual or quick start guide for more waterproof instruction if any.

- Do not use this apparatus near water.
- Do not expose this apparatus to dripping or splashing, and ensure that no objects filled with liquids, such as vases, are placed on the apparatus.

WARNING: TO REDUCE THE RISK OF FIRE OR ELECTRIC SHOCK, DO NOT EXPOSE THIS APPARATUS TO RAIN OR MOISTURE.

CAUTION FCC AND IC STATEMENT FOR USERS (USA AND CANADA ONLY)

This device complies with part 15 of the FCC Rules. Operation is subject to the following two conditions:

1. This device may not cause harmful interference, and
2. this device must accept any interference received, including interference that may cause undesired operation.

CAN ICES-003(8)/NMB-003(8)

FCC SDOC SUPPLIER'S DECLARATION OF CONFORMITY

HARMAN International hereby declares that this equipment is in compliance with the FCC Part 15 Subpart 8. The declaration of conformity may be consulted in the support section of our Web site, accessible from www.infinityspeakers.com

Federal Communication Commission Interference Statement

This equipment has been tested and found to comply with the limits for a class B digital device, pursuant to Part 15 of the FCC Rules. These limits are designed to provide reasonable protection against harmful interference in a residential installation. This equipment generates, uses and can radiate radio frequency energy and, if not installed and used in accordance with the instructions, may cause harmful interference to radio communications. However, there is no guarantee that interference will not occur in a particular installation. If this equipment does cause harmful interference to radio or television reception, which can be determined by turning the equipment off and on, the user is encouraged to try to correct the interference by one or more of the following measures:

- Reorient or relocate the receiving antenna.
- Increase the separation between the equipment and receiver.
- Connect the equipment into an outlet on a circuit different from that to which the receiver is connected
- Consult the dealer or an experienced radio/TV technician for help.

caution: Changes or modifications not expressly approved by HARMAN could void the user's authority to operate the equipment For Products That Transmit RF Energy:

FCC AND IC INFORMATION FOR USERS

This device complies with Part 15 of the FCC rules and Industry Canada license-exempt RSS standard(s).

Operation is subject to the following two conditions:

1. This device may not cause harmful interference; and
2. this device must accept any interference received, including interference that may cause undesired operation.

FCC/IC Radiation Exposure Statement

This equipment complies with FCC and ICED radiation exposure limits set forth for an uncontrolled environment. This equipment should be installed and operated with minimum distance 20cm between the radiator & your body. In case this equipment has to subject to FCC/IC SAR (Specific Absorption Rate) exposure test, this equipment is designed to meet the requirements for exposure to radio waves established by the FCC and ICED. These requirements set a SAR limit of 1.6 W/kg averaged over one gram of tissue. The highest SAR value reported under this standard during product certification for use when properly worn on the body or on the head, with no separation. To meet RF exposure guidelines and reduce exposure to RF energy during the operation, this equipment should be positioned at least this distance away from the body or the head. For radio equipment operates in 5150-5850MHz

FCC and IC caution:

High power radars are allocated as primary users of the 5.25 to 5.35 GHz and 5.65 to 5.85 GHz bands. These radar stations can cause interference with and/or damage to WLAN (Licence-Exempt Local Area Network) devices. No configuration controls are provided for this wireless equipment allowing any change in the frequency of operations outside the FCC grant of authorization for US operation according to Part 15.407 of the FCC rules.

IC caution:

User should also be advised that:

1. The device for operation in the band 5150- 5250 MHz is only for indoor use to reduce the potential for harmful interference to co-channel mobile satellite systems;
2. the maximum antenna gain permitted for devices in the bands 5250- 5350 MHz and 5470 – 5725 MHz shall comply with the e.i.r.p. limit. The maximum antenna gain permitted for devices in the band 5725 – 5825 MHz shall comply with the e.i.r.p. limits specified for point-to-point and non point-to-point operation as appropriate. Use Restriction Attention in European Union, operation is limited to indoor use within the band 5150-5350 MHz.

Comet disposal of this product (Waste Electrical & Electronic Equipment)

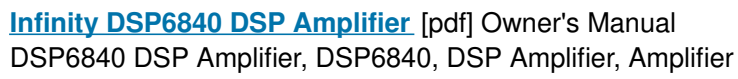
This symbol means the product must not be discarded as a household waste, and should be delivered to an appropriate collection facility for recycling. Proper disposal and recycling helps protect natural resources, human health and the environment. For more information on disposal and recycling of this product, contact your local municipality, – disposal service, or the shop where you bought this product. This product is RoHS compliant. This product is in compliance with Directive 2011/65/EU and UK The Restriction of the Use of Certain Hazardous Substances in Electrical and Electronic Equipment Regulations 2012, and its amendments, on the restriction of the use of certain hazardous substances in electrical and electronic equipment.

REACH

REACH (Regulation No 1907 /2006) addresses the production and use of chemical substances and their potential impacts on human health and the environment. Article 33(1) of REACH Regulation requires suppliers to inform the recipients if an article contains more than 0.1 % (per weight per article) of any substance(s) on the Substances of Very High Concern (SVHC) Candidate List ('REACH candidate list'). This product contains the substance 'lead' (CAS No. 7439-92-1) in a concentration of more than 0.1% per weight. At the time of release of this product, except for the lead substance, no other substances of REACH candidate list are contained in a concentration of more than 0.1% per weight in this product.

Note: On June 27, 2018, lead was added to the REACH candidate list. The inclusion of lead in the REACH candidate list does not mean that lead-containing materials pose an immediate risk or result in a restriction of permissibility of its use.

Documents / Resources



- [!\[\]\(8be7dbed0cdcd9134bb63b78488f98f4_img.jpg\) **Infinity Speakers | Harman Audio**](#)
- [!\[\]\(3840e24290716b574c7cf3c9ceee621d_img.jpg\) **Infinity Speakers | Harman Audio**](#)
- [**User Manual**](#)

This website is an independent publication and is neither affiliated with nor endorsed by any of the trademark owners. The "Bluetooth®" word mark and logos are registered trademarks owned by Bluetooth SIG, Inc. The "Wi-Fi®" word mark and logos are registered trademarks owned by the Wi-Fi Alliance. Any use of these marks on this website does not imply any affiliation with or endorsement.