



infinity series EC-i Waterproof Panic Button Owner's Manual

[Home](#) » [infinity series](#) » infinity series EC-i Waterproof Panic Button Owner's Manual



Waterproof Panic Button for ESL, ESX, EC-i & infinity output



Contents [[hide](#)

- [1 Specifications](#)
- [2 Overview](#)
- [3 Accessories](#)
- [4 Documents / Resources](#)
- [5 Related Posts](#)

Specifications

Operation	1 Programmable Button
Wireless Range	Up t o 500m Line of Sight
Frequency	SI6MHz
Modulation Type	GFSK
Protocol	infinity 2 Way Encrypted
Indication	Haptic & LED Feedback
Battery Type	1x CR2032 Lithium (non replaceable)
Battery Life	Up t o 5 Years
Operating Temperature	-20°C t o 60°C
Environment Humidity	100% max
Dimensions	48mm x 44mm x 17mm
Ingress Protection	P67
Functions	Programmable Arm, Disarm, Panic, Output Control & Delayed Press Options

Overview

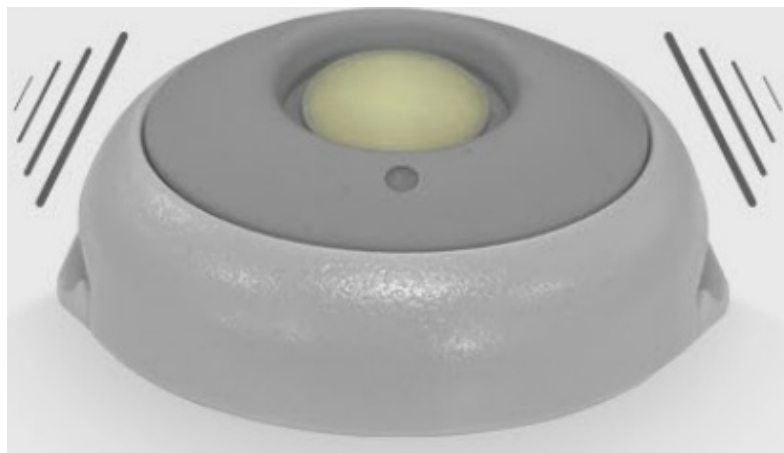
Function

Automatically pairs to 'infinity link' or 'infinity output' during learn procedure.

Optional 'Delayed Press' Function to help prevent false pressing. See bottom of page for more information:

2 Way Feedback

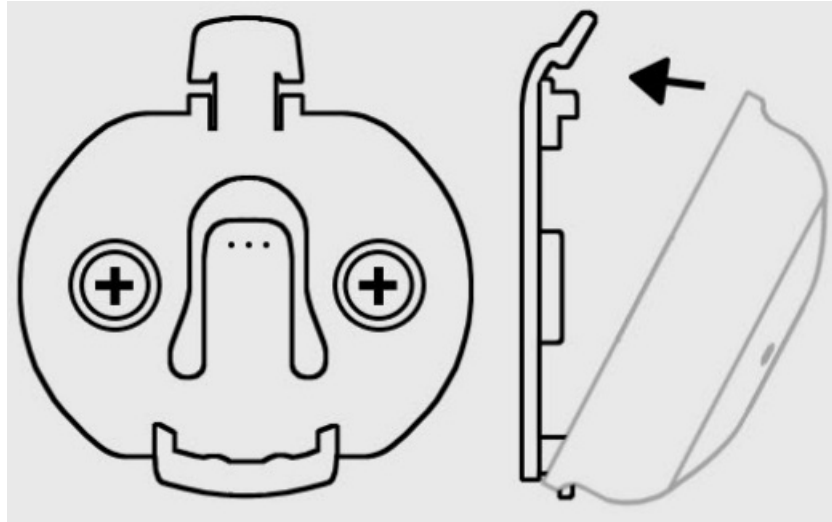
Panic button will vibrate & display a green LED to indicate a successful control panel or infinity Output operation.



Accessories

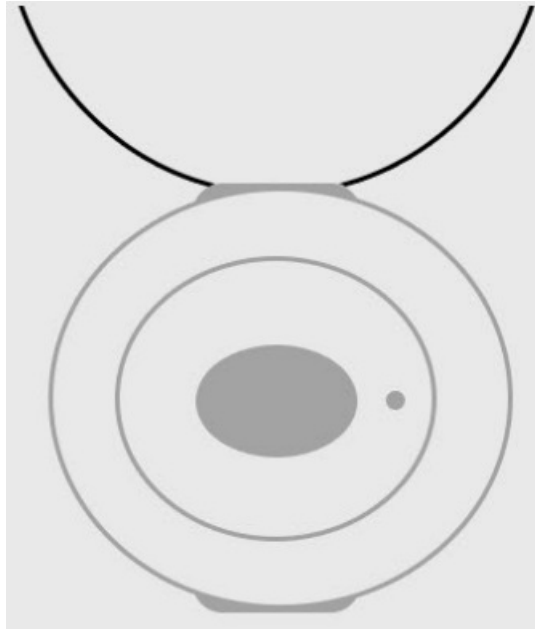
ClipinBase

With screw holes for wall mount or covert applications.



Nylon Necklace

For medical & other emergency applications.

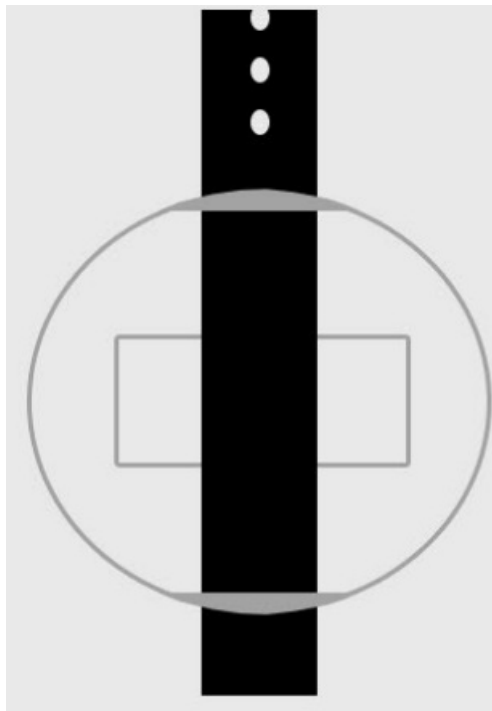


Wrist Option

Locations For watch strap.

(Strap not included.

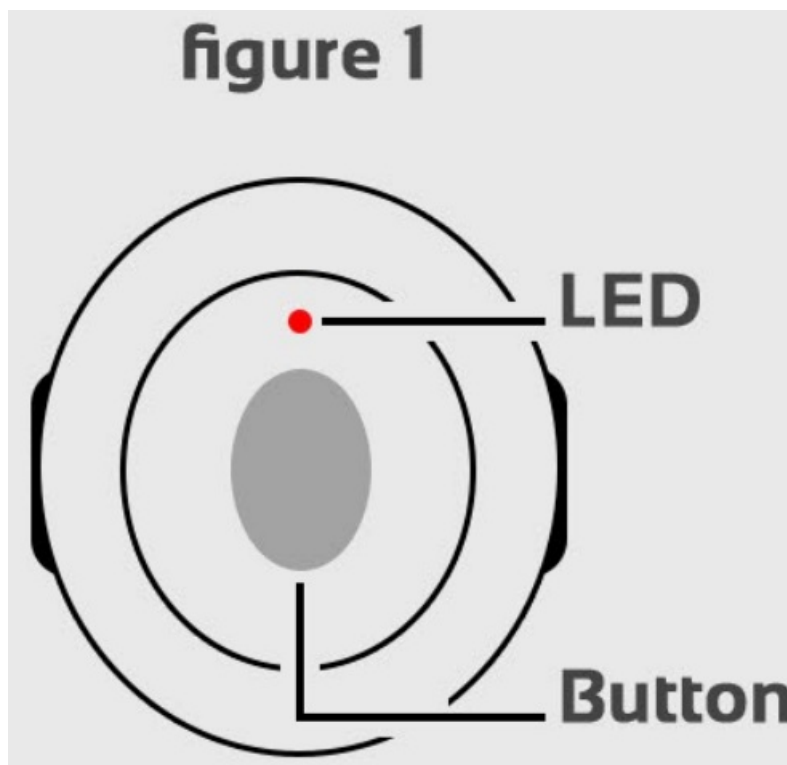
Requires 18mm x 1.5mm 'single pass' Strap).



Default Programming

If the 'infinity panic' has been previously learnt into a system it will require defaulting before being learnt or re-learnt into a control panel or infinity output.

1. To default: Press & hold the button for 10 seconds (until the LED turns SOLID RED).
2. As soon as the LED is SOLID RED, release the button, then press the same button 5 times in quick succession. (The LED will Fast flash orange during this part of the process).
3. A GREEN LED will flash momentarily to confirm that the default has completed successfully.



Button Delay Options

The infinity panic can be programmed for 'Instant Press', '0.2sec Delay' or '0.5sec Delay' as detailed below:

Warning: Changing the function will not work if the remote is communicating with a control panel or 'infinity

output'. Make sure the remote is defaulted OR temporarily disconnect the 'infinity link' before proceeding.

1. To change the button delay time: Press & hold the button For 5 seconds (u n t i l the LED rapidly flashes RED).
2. Assoon as the LED is rapidly flashing RED, release the button, then press the same button 5 times in quick succession. (The LED will fast flash orange during this part of the process).
3. A GREEN LED will flash momentarily t o confirm that the default has completed successfully.

The moment that the function has changed the infinity panic will vibrate to indicate the new function as detailed below:



1 Vibration = 0.2sec Delay



2 Vibrations = 0.5sec Delay



3 Vibrations = Instant

Press

Learning into the ESL Contro! Panel (consult contro! panel installation manual for advanced programming)

ESL control panels have pre configured user slots to simplify the learning of wireless buttons/users.

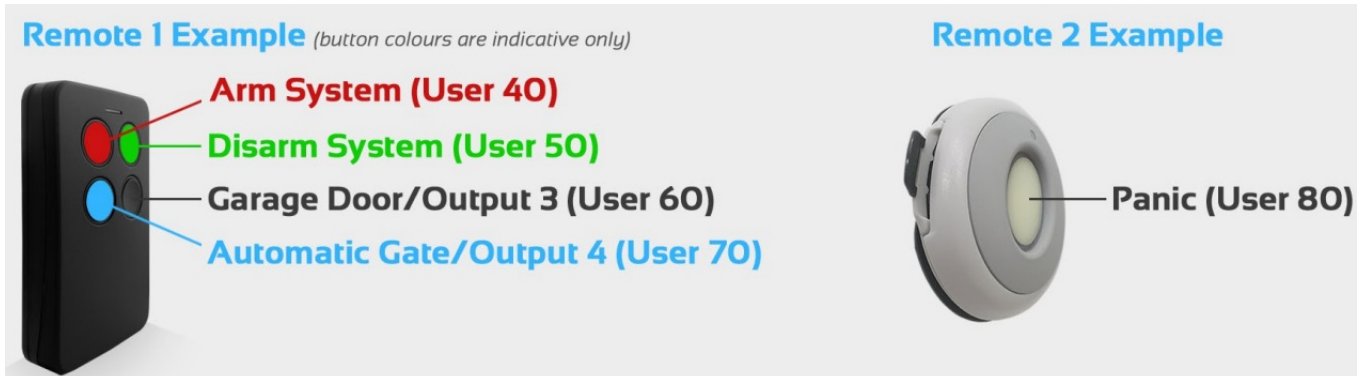
These are located from users 40 to 89 as shown in 'Pre-Configured ser Slots' table below:

- Make sure you are in installer programming mode (default PROG 000000 ENTER) before continuing.
- Press PROG 18 ENTER followed by the User Number you wish to learn, then ENTER. Next press ENTER again to start the Reypad beeps, indicating that the system is waiting to learn a remote button.
- Press the remote button you wish to learn and the Reypad should stop beeping, indicating a successful learn.
- To learn another button, press the right or left arrows on the Reypad to go to next or previous user slot, then press ENTER, or press PROG then ENTER to exit installer programming.

Pre-Configured User Slots Table (for ESL Series only)



Arm Users 40 – 49	Users 40 to 49 will ARM only Example: P18 E4OEE (learn beeps start) Press the remote button you wish to learn (learn beeps stop) This button will now ARM the system
Disarm Users 50 – 59	Users 50 to 59 will DISARM only Example: P18 E5QOEE (learn beeps start) Press the remote button you wish to learn (learn beeps stop) This button will now DISARM the system
Output 3 Users 60- 69	Users 60 to 69 will operate OUTPUT 3 & DISARM at the same time Example: P18 E6QEE (learn beeps start) Press the remote button you wish to learn (learn beeps stop) This button will now DISARM the system & control output 3 at the same time
Output 4 Users 70- 79	Users 70 to 79 will operate OUTPUT 4 & DISARM at the same time Example: P18 E7QOEE (learn beeps start) Press the remote button you wish to learn (learn beeps stop) This button will now DISARM the system & control output 4 at the same time
Panic Users 80- 789	Users 80 to 89 will operate as a PANIC button Example: P18 E8OEE (learn beeps start) Press the remote button you wish to learn (learn beeps stop) This button will now perform a PANIC function



Battery Low Reporting & Haptic Feedback

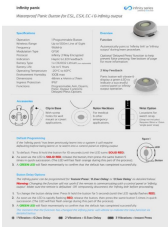
- P7Emust be set to option | (Freelink) to enable battery low reporting & For the remote to operate correctly.
- Haptic feedback is disabled when battery is low is reported due to the remote entering power save mode.
- Battery low will be indicated at 2.2V & under



powered by EliteControl

Manufactured by Arrowhead Alarm Products Ltd – www.aap.co.nz

Documents / Resources



[infinity series EC-i Waterproof Panic Button](#) [pdf] Owner's Manual
ESL, ESX, EC-i, EC-i Waterproof Panic Button, EC-i, Waterproof Panic Button, Panic Button, Button