



# Infinity LAB ClearCall Portable USB and Bluetooth Speakerphone User Guide

[Home](#) » [Infinity LAB](#) » Infinity LAB ClearCall Portable USB and Bluetooth Speakerphone User Guide 

## Contents

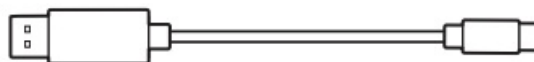
- [1 Infinity LAB ClearCall Portable USB and Bluetooth Speakerphone](#)
- [2 WHAT'S IN THE BOX](#)
- [3 OVERVIEW](#)
- [4 CONNECT BLUETOOTH](#)
- [5 CONNECT USB](#)
- [6 CHARGING](#)
- [7 POWER BANK](#)
- [8 LED BEHAVIOR](#)
- [9 SPECIFICATION](#)
- [10 Documents / Resources](#)
- [11 Related Posts](#)



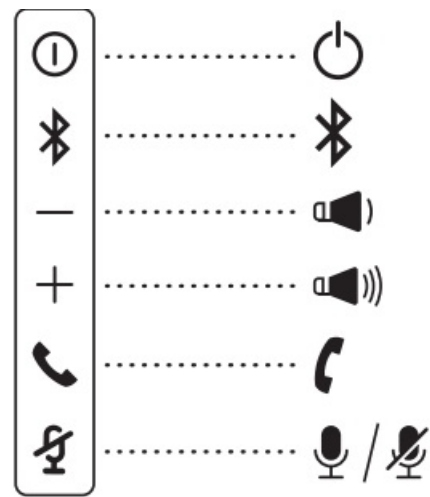
**Infinity LAB ClearCall Portable USB and Bluetooth Speakerphone**



## WHAT'S IN THE BOX

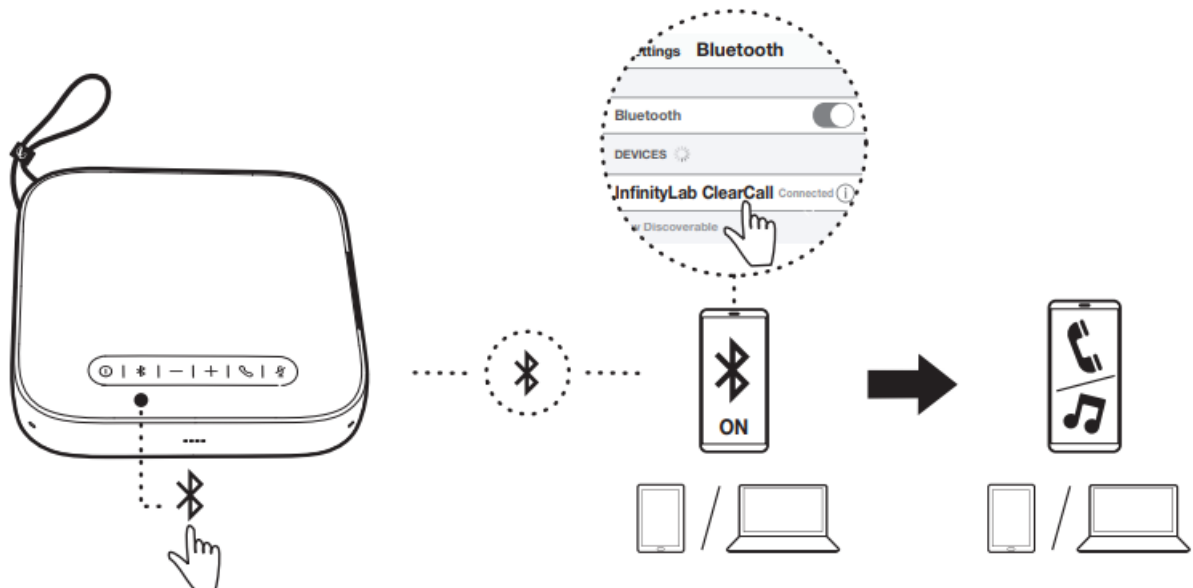


## OVERVIEW

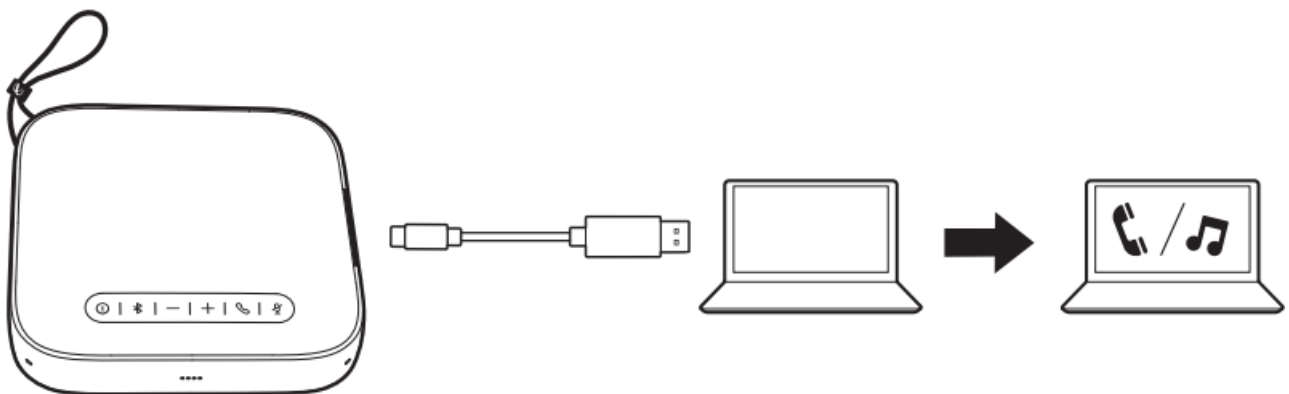


\* Phone and Mute buttons may not be compatible with all apps.

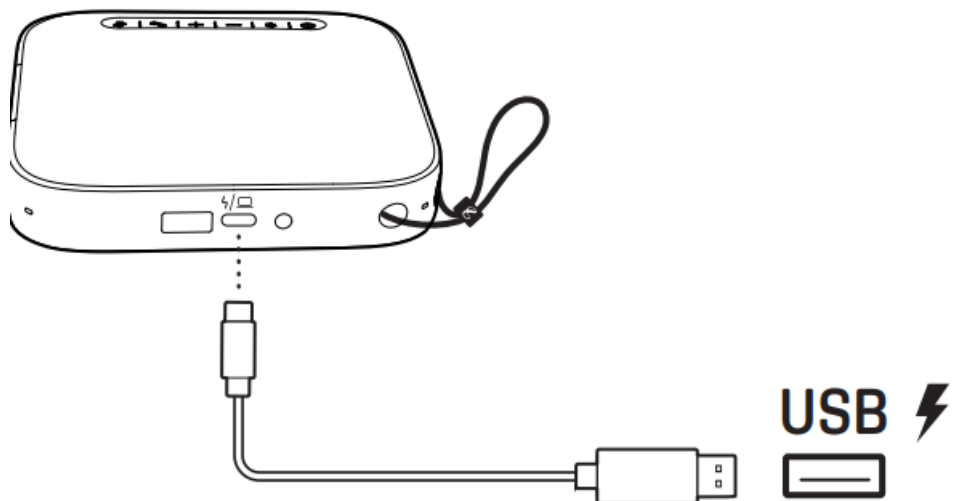
## CONNECT BLUETOOTH



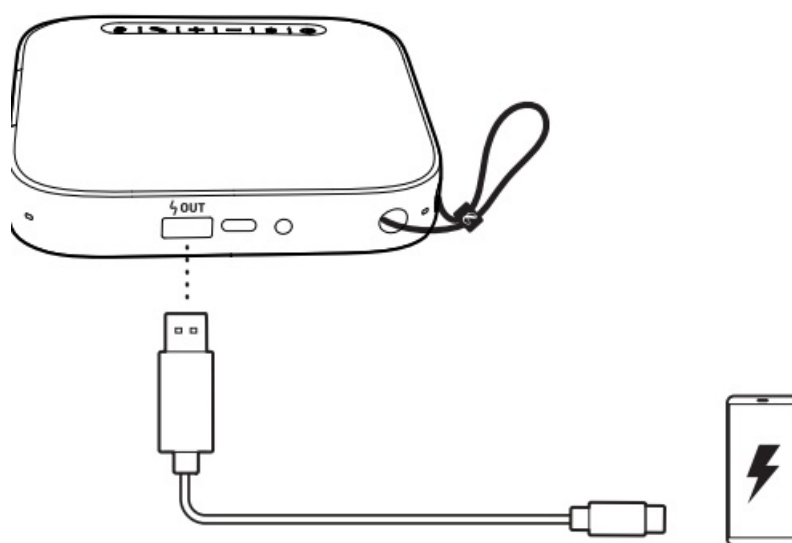
## CONNECT USB



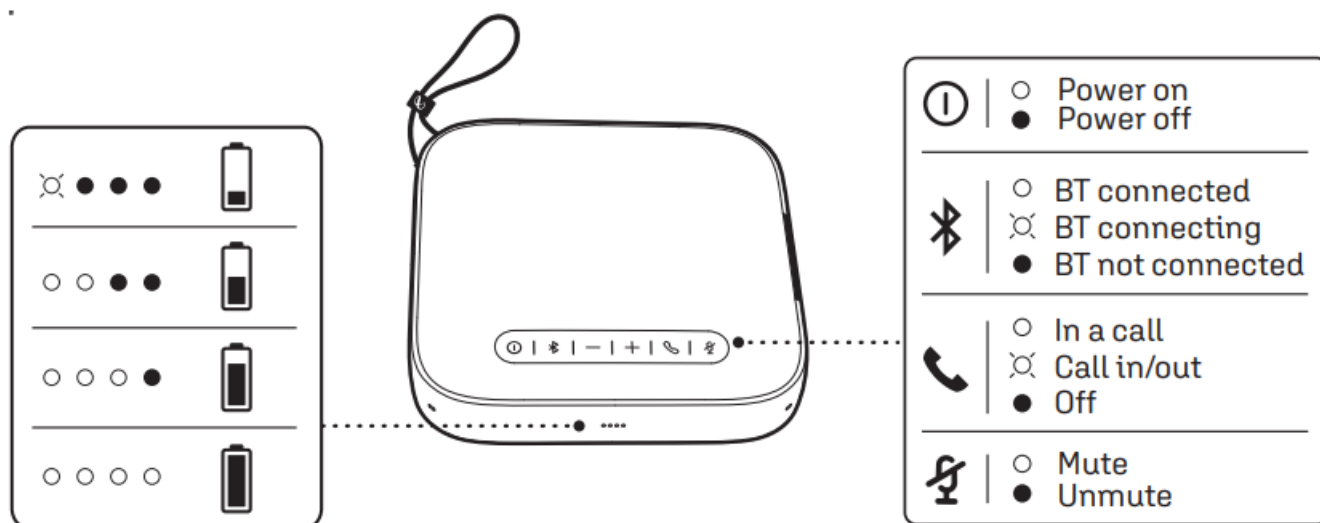
## CHARGING



## POWER BANK



## LED BEHAVIOR



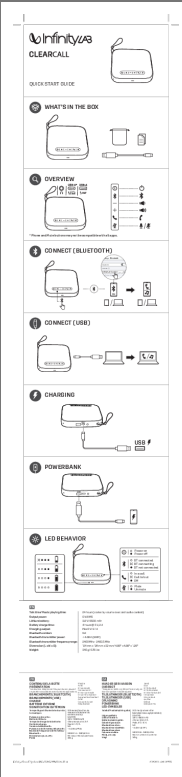
## SPECIFICATION

- **Talk time/ Music playing time:** 24 hours (varies by volume level and audio content)

- **Output power:** 5 W RMS
- **Lithium battery:** 3.6 V/ 6500 mAh
- **Battery charge time:** 4 hours @ 5 V, 2 A
- **Charging output:** Max 5 V/ 2.1 A
- **Bluetooth version:** 5.0
- **Bluetooth transmitter power:** < 4 dBm (EIRP)
- **Bluetooth transmitter frequency range:** 2400 MHz – 2483.5 MHz
- **Dimension (L x W x D):** 124 mm x 124 mm x 32 mm/ 4.88" x 4.88" x 1.26"
- **Weight:** 345 g/ 0.76 lbs

The Bluetooth® word mark and logos are registered trademarks owned by Bluetooth SIG, Inc. and any use of such marks by HARMAN International Industries, Incorporated is under license. Other trademarks and trade names are those of their respective owners.

## Documents / Resources

	<p><a href="#">Infinitize LAB ClearCall Portable USB and Bluetooth Speakerphone</a> [pdf] User Guide  ClearCall Portable USB and Bluetooth Speakerphone, ClearCall, Portable USB and Bluetooth Speakerphone, USB and Bluetooth Speakerphone, Bluetooth Speakerphone, Speakerphone</p>
--	---