

Infantino 208101 Store Unit Pressing Device



# infantino 208101 Store Unit Pressing Device Instruction Manual

[Home](#) » [infantino](#) » infantino 208101 Store Unit Pressing Device Instruction Manual 

## Contents

- [1 infantino 208101 Store Unit Pressing Device](#)
- [2 Product Information](#)
- [3 Product Usage Instructions](#)
- [4 IMPORTANT! KEEP INSTRUCTIONS FOR](#)
- [5 Packaged Contents](#)
- [6 Assembly: Squeeze Station™ Base](#)
- [7 Assembly: Filling your Squeeze Pouches™](#)
- [8 Cleaning your Squeeze Station™](#)
- [9 Storing your Squeeze Station™](#)
- [10 Documents / Resources](#)
  - [10.1 References](#)
- [11 Related Posts](#)



**infantino 208101 Store Unit Pressing Device**



## Product Information

### Specifications:

- **Brand:** Squeeze Station™
- **Model:** #208101
- **Made in:** China
- **Contact:** 1-[800-840-4916](tel:8008404916), [www.infantino.com](http://www.infantino.com) , [US.INFO@INFANTINO.COM](mailto:US.INFO@INFANTINO.COM)

## Product Usage Instructions

- **Assembly:**  
Locate tray top and support, then insert each leg into the tray support.
- **For Squeeze Station™ Base Installation:**
- **Cleaning:**  
To clean your Squeeze Station™, remove the tray and wash components separately with warm water and soap. Air dry or towel dry and place the tray back on the base.
- **For cleaning fill tubes and press:**  
Can be washed in the dishwasher top rack or hand wash with warm water and soap and allow to air dry.
- **Storing:**  
For storage, place reusable pouches in the top tray and hang filler tubes and press from the top tray as shown.

## FAQ (Frequently Asked Questions)

- **Q: Can the reusable food pouches be used multiple times?**  
A: Yes, the pouches are reusable. Make sure to clean them thoroughly between uses.

• **Q: Is the Squeeze Station™ dishwasher safe?**

A: Certain components like fill tubes and press can be washed in the dishwasher top rack. Other parts should be hand washed.

• **Q: How many reusable food pouches are included in the package?**

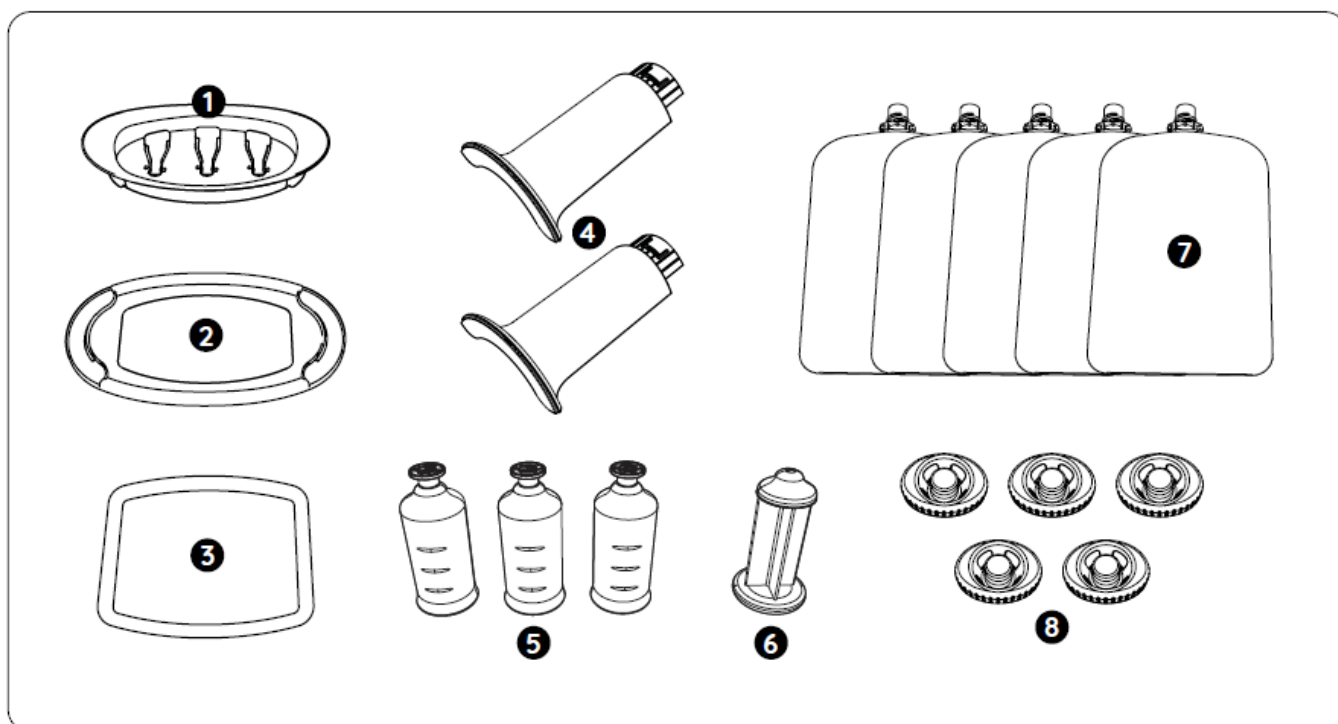
A: The package includes 5 reusable food pouches and 5 caps.

**squeeze station™**  
press & store unit

**IMPORTANT! KEEP INSTRUCTIONS FOR**

- **FUTURE USE.** Thank you for choosing this product. Read all instructions before assembling and using this product.
- **IMPORTANT! KEEP INSTRUCTIONS FOR FUTURE USE.** Read all instructions before assembling and using this product. Failure to follow each instruction can result in serious injury or death to your baby.
- **!WARNING:** This product is not a toy. DO NOT leave baby unattended with product at any time. Keep this product out of baby's reach. Adult assembly required. DO NOT microwave or boil food in water. Heat food by submerging pouch in hot water. Always test food temperature before serving to a child. Do not let a child take a bottle to bed or self feed for long periods. Keep cap out of reach of children. Adult supervision is required. Pouch is not insulated – keep pouch cool. DO NOT use damaged pouches. This is not a chew or teething toy.
- **Helpful Hints:** Squeeze Pouches™ are great for children of all ages and stages. When babies are just starting solids, we recommend not giving the Squeeze Pouches™ directly to them. Just simply squeeze the puree from the Squeeze Pouches™ onto a spoon for use. When baby starts to self-feed, this is a good indication that they are ready to use the Squeeze Pouches™ on their own. Always remember adult supervision is required when child is eating. Always remember to consult your pediatrician to ensure your child is at a proper developmental stage for diet changes. Not for use with fatty foods such as olive oil, corn oil, etc.

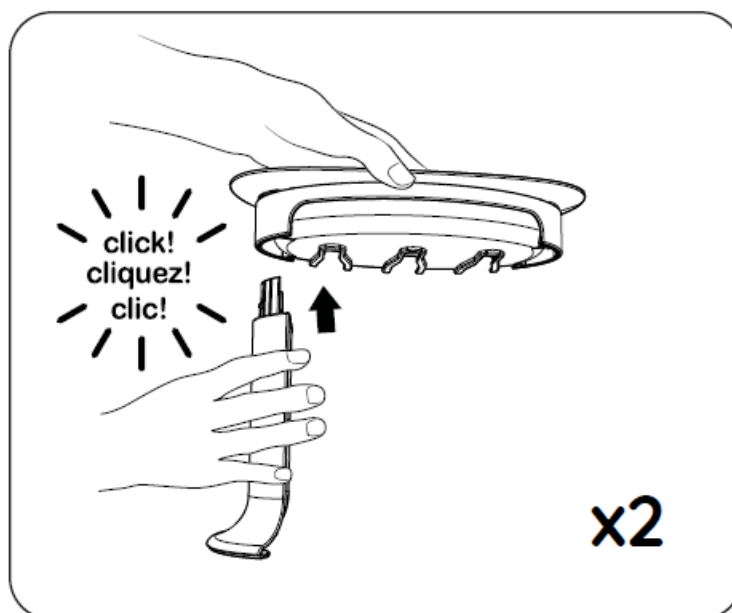
**Packaged Contents**



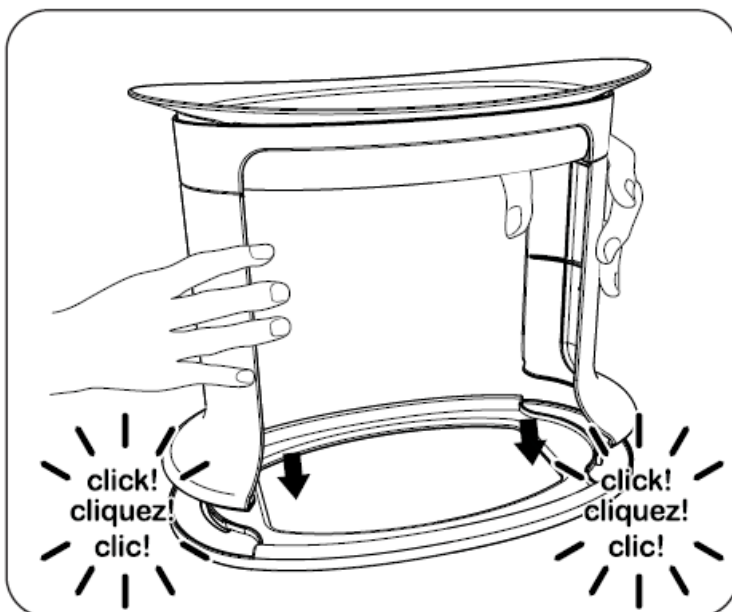
1. 1 tray top with tray support
2. 1 base
3. 1 tray insert
4. 2 leg supports
5. 3 filling tubes
6. 1 press
7. 5 reusable food pouches
8. 5 caps

### Assembly: Squeeze Station™ Base

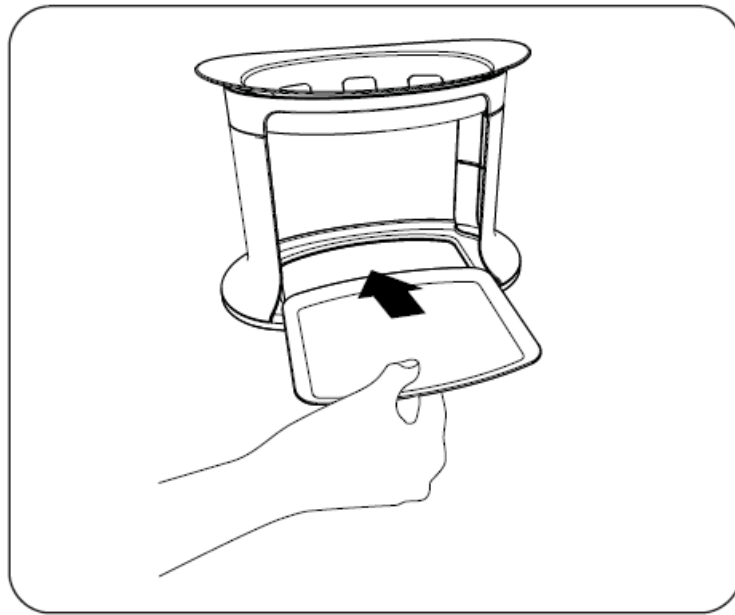
- Locate tray top and support, then insert each leg into the tray support.



- With both legs attached to the tray support, click legs into their recesses on the base.

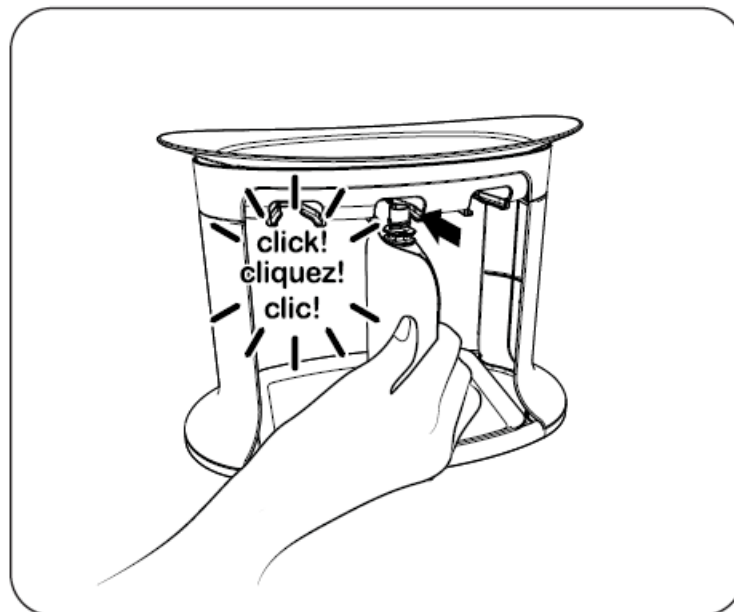


- With legs fully attached to the base, add tray insert to the base.

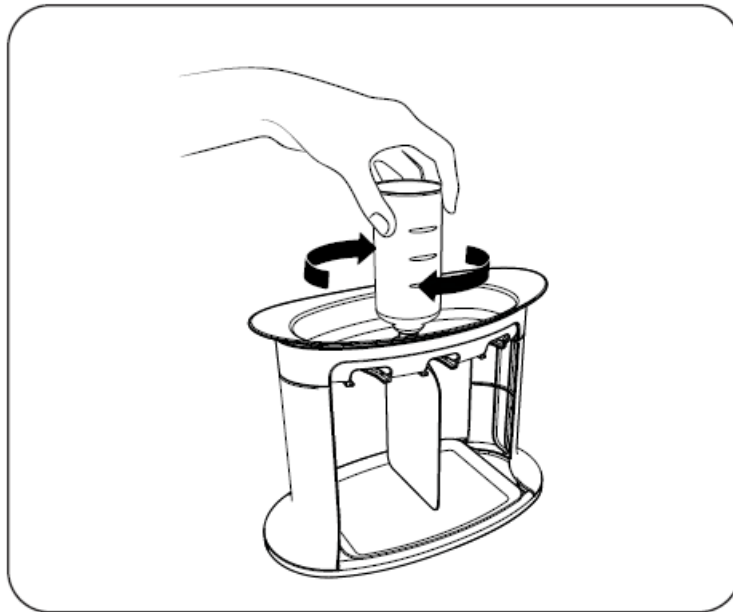


### **Assembly: Filling your Squeeze Pouches™**

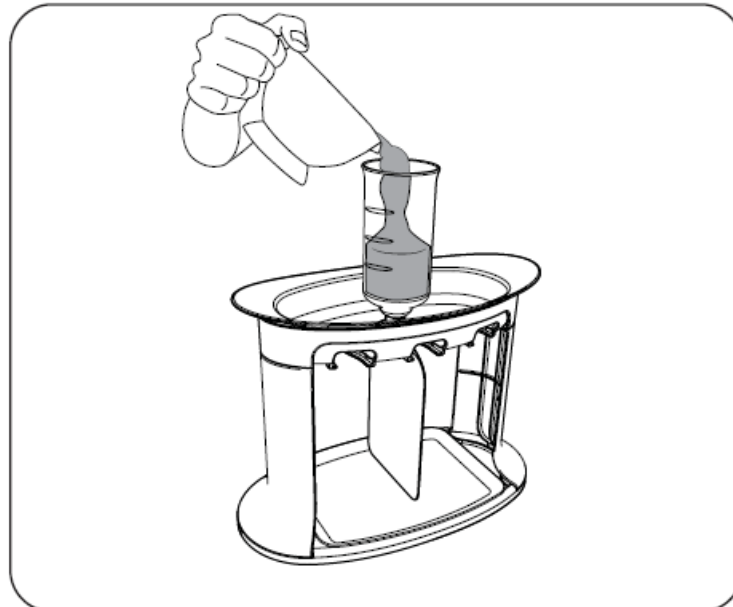
- Slide the reusable pouch fully into the top tray. The reusable pouch will fit snugly when secure. Confirm that the bottom opening of the pouch is properly sealed before continuing.



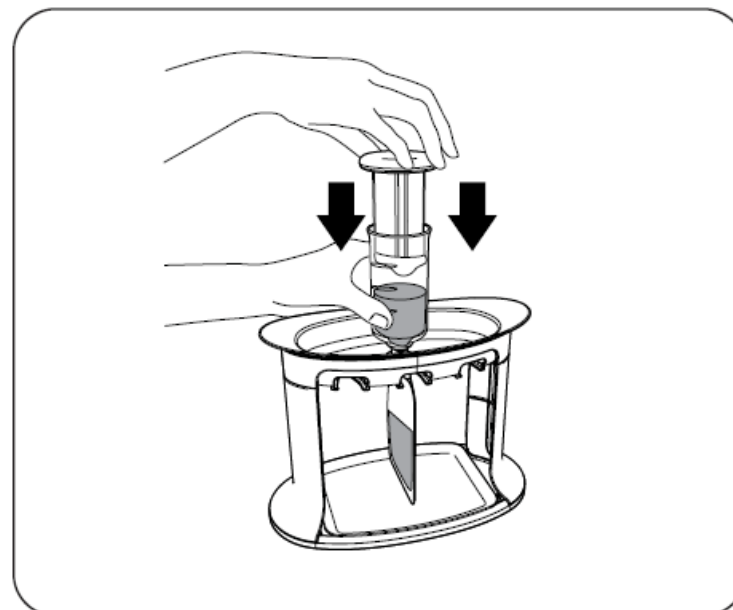
- Screw the filling tube on the reusable pouch spout.



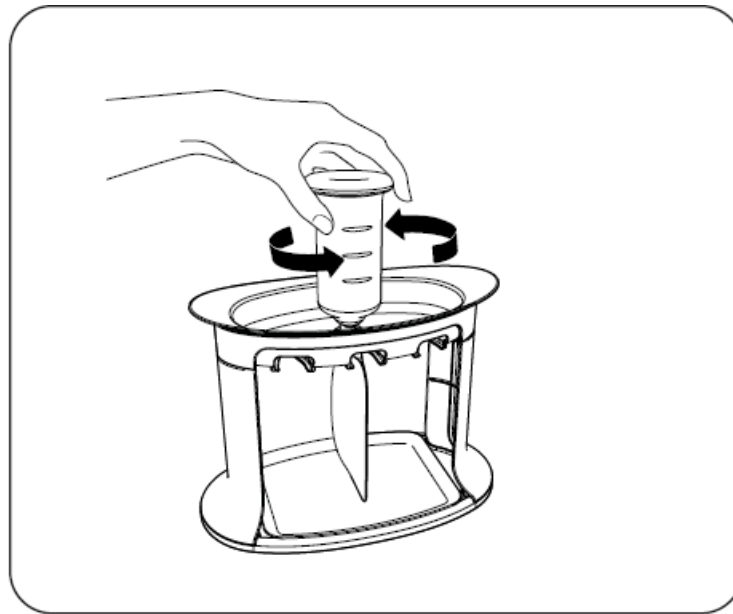
- Pour puree into the filling tube. The filler tube is labeled at 1.75 oz. and 3.5 oz. for quick and easy reading.



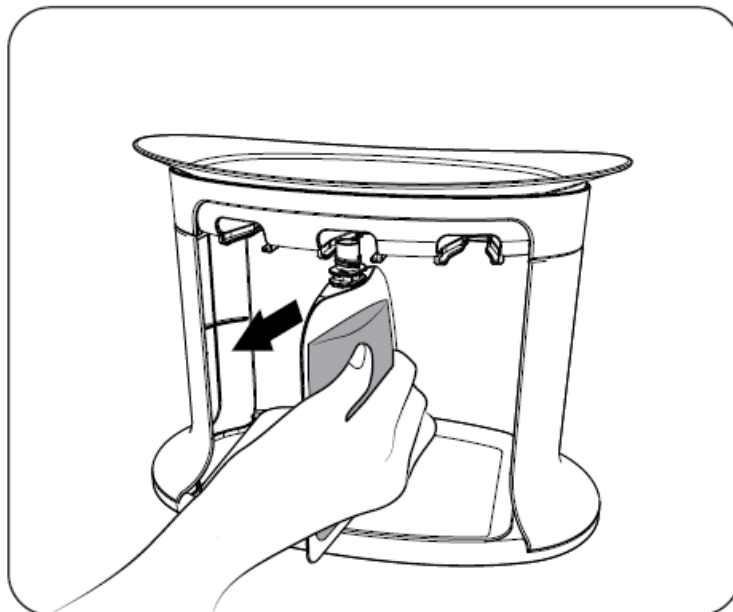
- Use the press to push puree into the reusable pouch. Fill the reusable bags up to 3.5 oz.



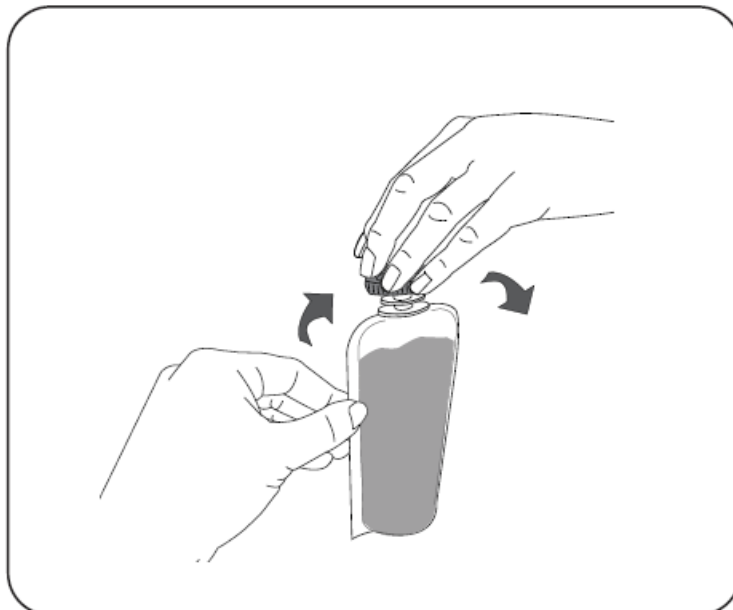
- Unscrew the filling tube from the reusable pouch spout.



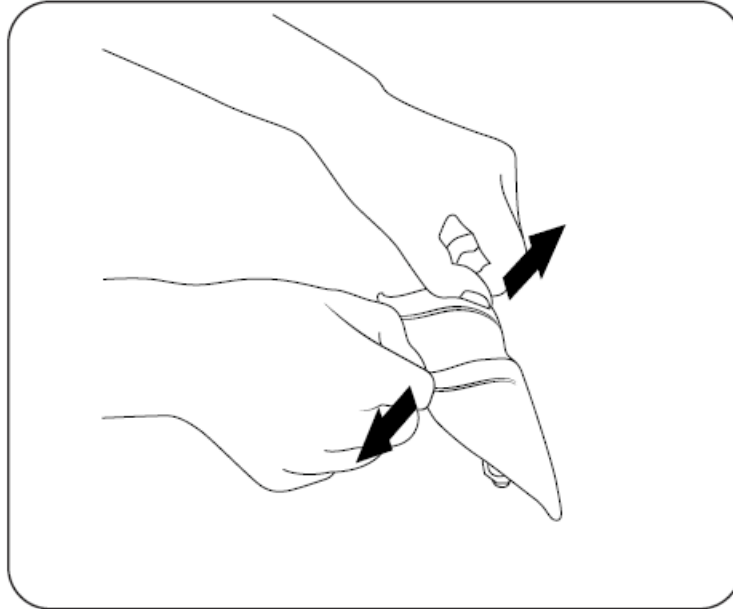
- Remove the reusable pouch from the top tray.



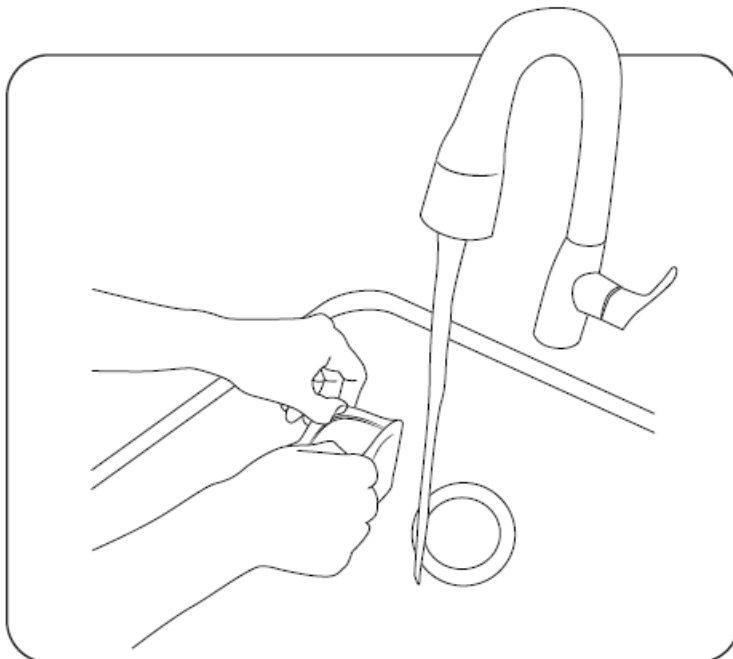
- Screw cap on the pouch and refrigerate. Double check that the bottom of the pouch is sealed to prevent leaks and spills.



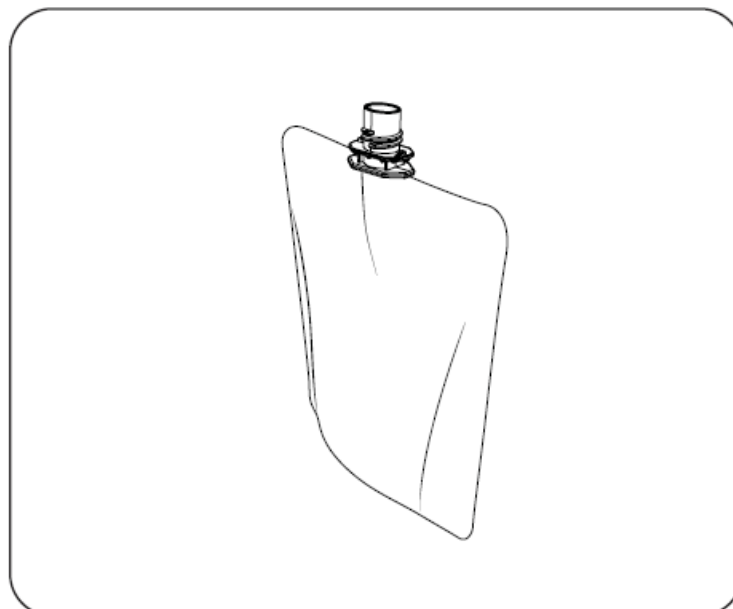
- To clean the reusable pouch, open the resealable bottom of the bag and empty contents into the sink or trash.



- Rinse out the reusable pouch with water and soap.

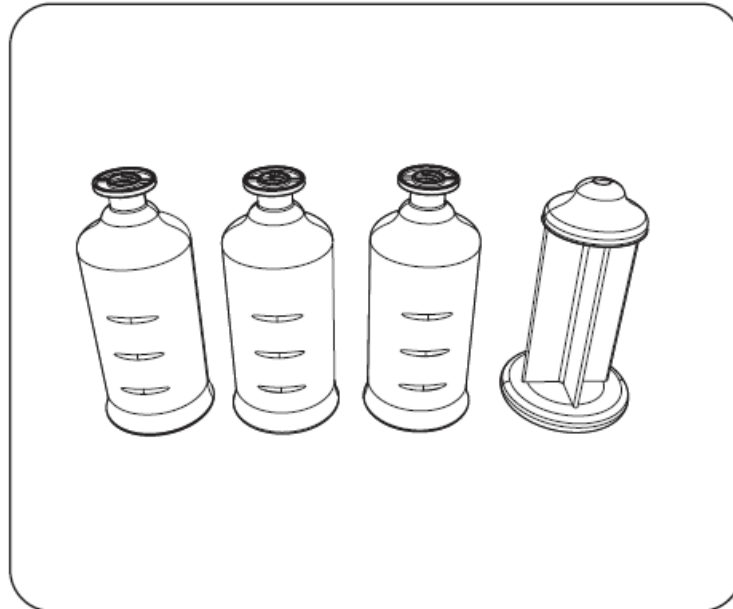


- Leave the reusable bag with the bottom open and on a paper towel, with the spout facing up, to air dry.

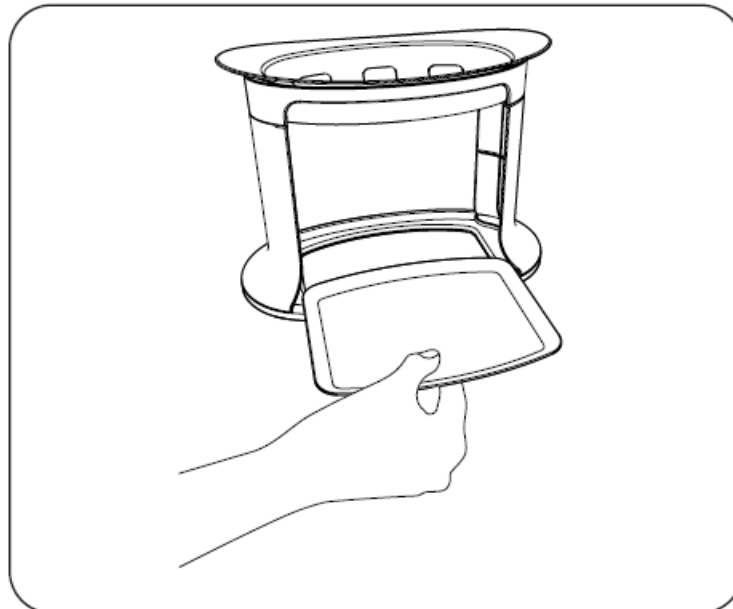


- Fill tubes and press can be washed in the dishwasher top rack or hand wash with warm water and soap and

allow to air dry.

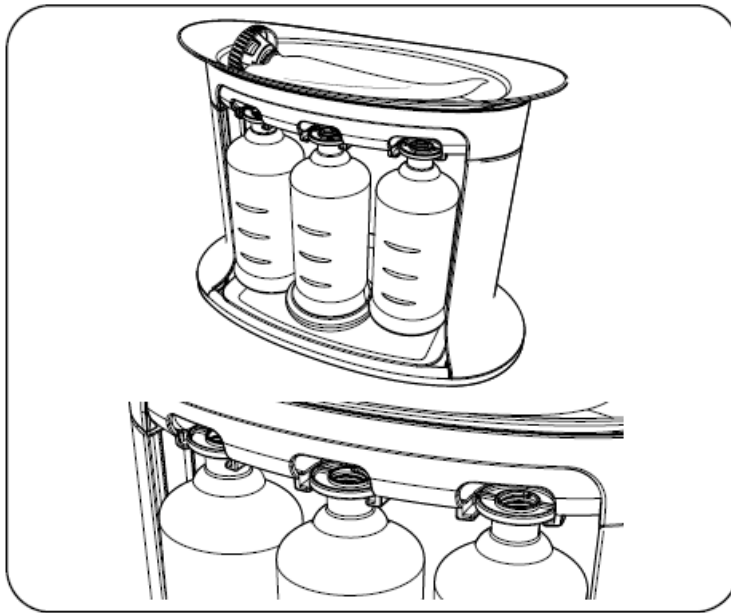


- To clean your Squeeze Station™, remove the tray and wash components separately with warm water and soap. Air dry or towel dry and place the tray back on the base.



### Storing your Squeeze Station™

For storage, place reusable pouches in the top tray and hang filler tubes and press from the top tray as shown.



: 1-800-840-4916 [www.infantino.com](http://www.infantino.com) INFANTINO  
SAN DIEGO, CA 92121 USA [US.INFO@INFANTINO.COM](mailto:US.INFO@INFANTINO.COM)

MADE IN CHINA  
© 2024 BLUE BOX.  
ALL RIGHTS RESERVED.

## Documents / Resources

 <b>SOURCE STATION™</b> fresh [legitimate] Infantino IMPORTANT! KEEP INSTRUCTIONS FOR FUTURE USE. These instructions are for your reference only. Please do not discard them. IMPORTANT! CONSERVEZ LES INSTRUCTIONS POUR CONSULTATION ULTÉRIEURE. Ces instructions sont destinées à votre référence uniquement. Veuillez ne pas les jeter. ¡IMPORTANTE! GUARDE LAS INSTRUCCIONES PARA SU USO FUTURO. Estas instrucciones son solo para su referencia. No las deseches. Infantino	<a href="#">infantino 208101 Store Unit Pressing Device</a> [pdf] Instruction Manual 208101 Store Unit Pressing Device, 208101, Store Unit Pressing Device, Unit Pressing Device, Pressing Device
---	--

## References

- [User Manual](#)

[Manuals+](#), [Privacy Policy](#)

This website is an independent publication and is neither affiliated with nor endorsed by any of the trademark owners. The "Bluetooth®" word mark and logos are registered trademarks owned by Bluetooth SIG, Inc. The "Wi-Fi®" word mark and logos are registered trademarks owned by the Wi-Fi Alliance. Any use of these marks on this website does not imply any affiliation with or endorsement.