



inELS RFSTI-11B-SL Switch Unit with External Temperature Sensor Instruction Manual

[Home](#) » [inELS](#) » inELS RFSTI-11B-SL Switch Unit with External Temperature Sensor Instruction Manual 

Contents

- [1 inELS RFSTI-11B-SL Switch Unit with External Temperature Sensor](#)
- [2 Characteristics](#)
- [3 Assembly](#)
- [4 Connection](#)
- [5 Screwless terminals](#)
- [6 Indication, manual control](#)
- [7 Programming with the RF control unit RF Touch \(RFTC-50/G, eLAN-RF\)](#)
- [8 Technical parameters](#)
- [9 Warning](#)
- [10 Documents / Resources](#)
 - [10.1 References](#)
- [11 Related Posts](#)

inELS

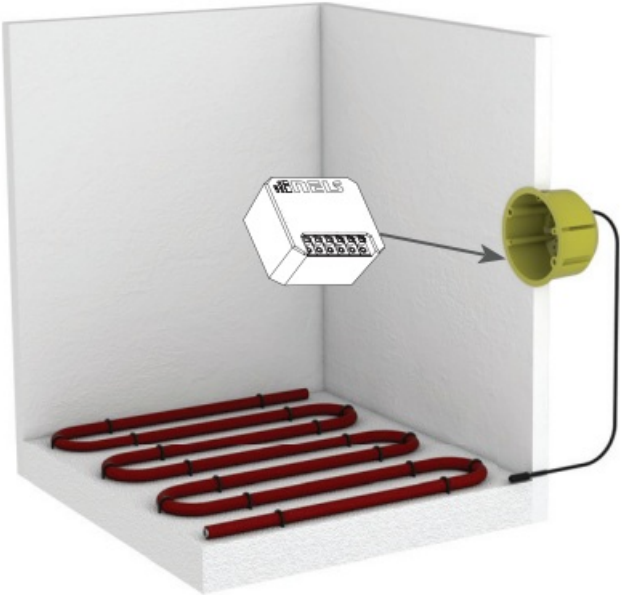
inELS RFSTI-11B-SL Switch Unit with External Temperature Sensor



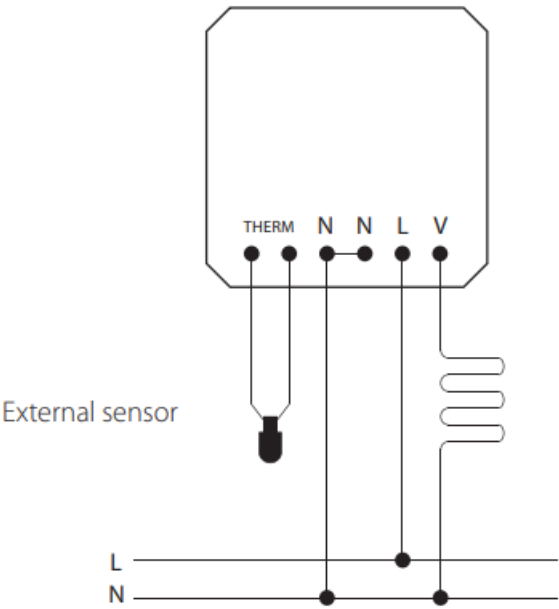
Characteristics

- The temperature component measures the temperature with an external sensor and at the same time controls the heating circuit (electric underfloor heating, air conditioning, boiler...).
- They can be combined with Detectors, Controllers or iNELS RF Control system elements.
- It measures the temperature in the range of -20 to +50 °C and sends it to the system component at regular 5 min. intervals. When the temperature changes suddenly, it sends a signal.
- Setting the function of heating/cooling, hysteresis and off set is carried out in the system component or application.
- Allows connection of switched load up to 8 A (2,000 W).
- Range up to 200 m (in open air), in case of insufficient signal between the controller and the unit, use the RFRP-20N signal repeater or RFIO2 protocol devices that support this function.
- Communication with the bidirectional protocol RFIO2.
- The BOX version offers installation directly into the installation box, ceiling or cover of the controlled appliance. Easy to install thanks to screwless clamps.
- External sensor TC (-20 to +80 °C) or TZ (-40 to +125 °C) with a length of 3 m, 6 m, 12 m.

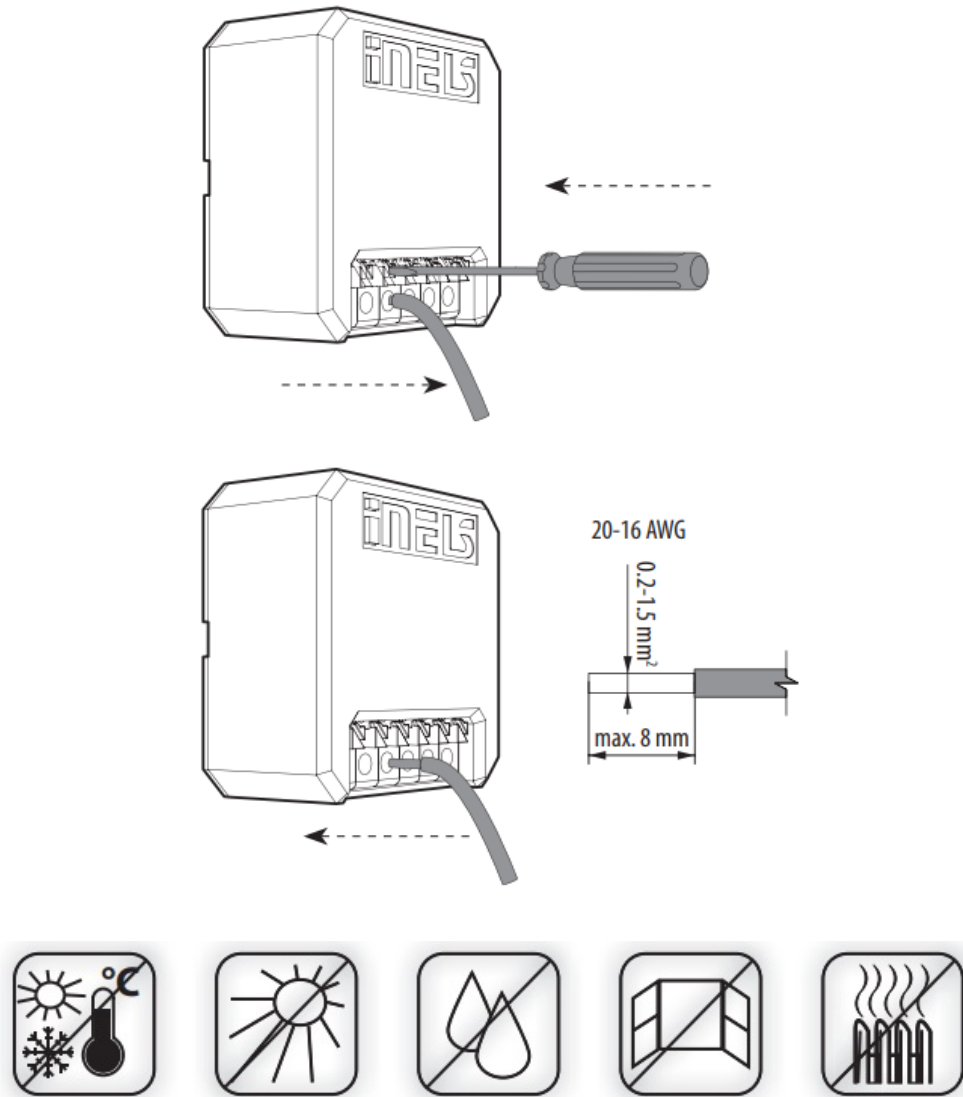
Assembly



Connection

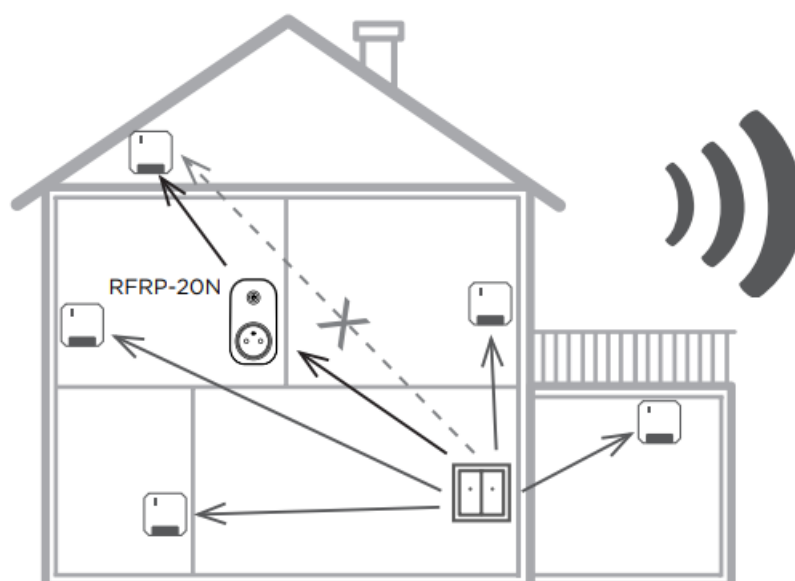



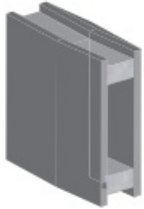

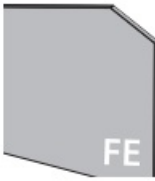

Screwless terminals



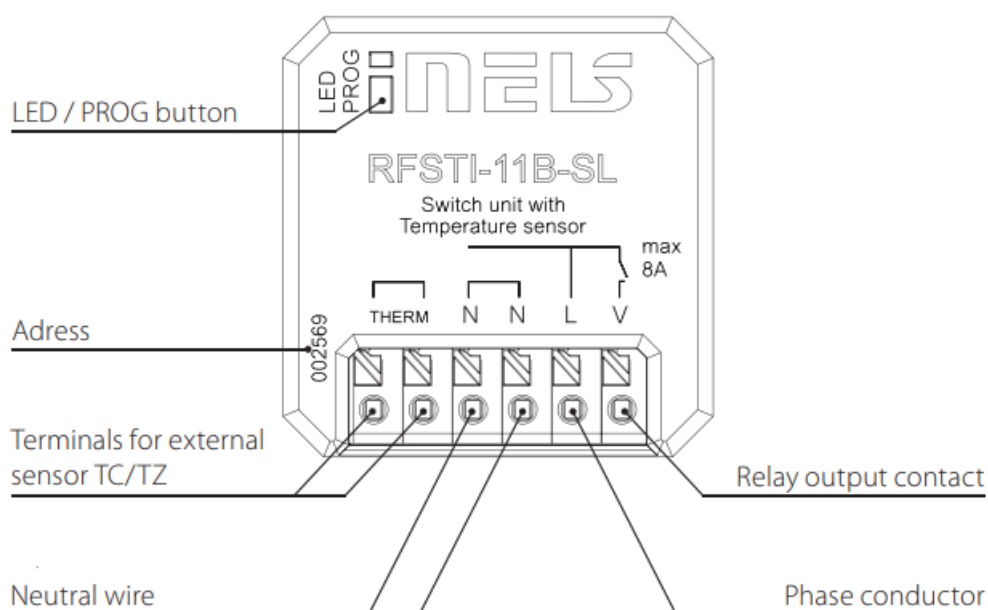
Avoid rapid temperature changes, direct sunlight and excessive moisture. The temperature units should not be located near windows or heating equipment, etc., which could affect the internal temperature sensor.

Radio frequency signal penetration through various construction materials



				
60 - 90 %	80 - 95 %	20 - 60 %	0 - 10 %	80- 90 %
brick walls	wooden structures with plaster boards	reinforced concrete	metal partitions	common glass

Indication, manual control



Pressing the button activates the output for 10 seconds. At this point, it is possible to check the wiring of the electrical circuit, without the need for assignment to the system.

Programming with the RF control unit RF Touch (RFTC-50/G, eLAN-RF)

Description of function

The external sensor measures temperature and sends the signal to RF Touch (RFTC-50/G, eLAN-RF).

Programming

An address listed on the front of the actuator is used for programming and controlling the temperature actuator RFSTI-11B-SL by RF Touch (RFTC-50/G, eLAN-RF).

Technical parameters

Supply voltage:		230 V AC
Supply voltage frequency:		50-60 Hz
Apparent input:		7 VA / $\cos \varphi = 0.1$
Dissipated power:		0.7 W
Supply voltage tolerance:		+10 %; -15 %
Temperature measurement input:		-20 až +50 °C
Temp. measurement range and accuracy:		0.5 °C of the range

Number of contacts:		1x switching
Rated current:		8 A / AC1
Switching power:		2000 VA / AC1
Peak current:		10 A / <3 s
Switching voltage:		250 V AC1
Mechanical service life:		1×10 ⁷
Electrical service life (AC1):		1×10 ⁵

Wireless:		25 channels
Communication protocol:		RFIO2
Frequency:		866–922 MHz
Function repeater:		yes / no
Manual control:		button (ON/OFF)
Range:		up to / až 200 m

Operating temperature:		-15 až + 50 °C
Operating position:		any
Mounting:		free at lead-in wires
Protection:		IP40
Overvoltage category:		III.
Contamination degree:		2
Connection:		Screwless terminals
Dimensions:		43 x 44 x 22 mm
Weight:		31g
Related standards:		EN 60730, EN 63044, EN 300 220, EN 301 489

⚡ Temperature sensor input is at the supply voltage potential.

Attention:

When you instal iNELS RF Control system, you have to keep minimal distance 1 cm between each units. Between the individual commands must be an interval of at least 1s.

Warning

Instruction manual is designated for mounting and also for user of the device. It is always a part of its packing. Instal-lation and connection can be carried out only by a person with adequate professional quali- fication upon under- standing this instruction manual and functions of the device, and while observing all valid regulations. Trouble-free function of the device also depends on transportation, storing and handling. In case you notice any sign of damage, deformation, malfunction or missing part, do not install this device and return it to its seller. It is necessary to treat this product and its parts as electronic waste after its lifetime is terminated. Before starting installation, make sure that all wires, connected parts or terminals are de-energized. While mounting and servicing observe safety regula- tions, norms, directives and professional, and export regulations for working with electrical devices. Do not touch parts of the device that are energized – life threat. Due to transmissivity of RF signal, observe correct location of RF components in a building where the installation is taking place. RF Control is designated only for mounting in interiors. Devices are not designated for installation into exteriors and humid spaces. The must not be installed into metal switchboards and into plastic switchboards with metal door – transmissivity of RF signal is then impossible. RF Control is not recommended for pulleys etc. – radiofrequency signal can be shielded by an obstruction, inter-fered, battery of the transceiver can get fl at etc. and thus disable remote control.

ELKO EP declares that the RFSG type of equipment complies with Directives 2014/53/EU, 2011/65/EU, 2015/863/EU and 2014/35/EU. The full EU Declaration of Conformity is at: <https://www.elkoep.com/wireless-contact-converter-230v—rfsg-1m>

Czech Republic

Tel.: +420 573 514 211,

e-mail: elko@elkoep.com,

www.elkoep.com

ELKO EP, s.r.o. | Palackého 493 | 769 01 Holešov, Všetuly | Česká republika | e-mail: elko@elkoep.cz EN

Support: +420 778 427 366 | CZ Technická podpora: +420 775 444 609

www.elkoep.com

Documents / Resources



[inELS RFSTI-11B-SL Switch Unit with External Temperature Sensor](#) [pdf] Instruction Manual

RFSTI-11B-SL Switch Unit with External Temperature Sensor, RFSTI-11B-SL, Switch Unit with External Temperature Sensor, Switch Unit

References

- [ELKO EP - Global relay manufacturer • ELKO EP](#)
- [ELKO EP - Výrobce elektronických přístrojů • ELKO EP s.r.o](#)
- [Input contact converter RFSG-1M • ELKO EP](#)
- [Katalogy • ELKO EP s.r.o](#)

[Manuals+](#)