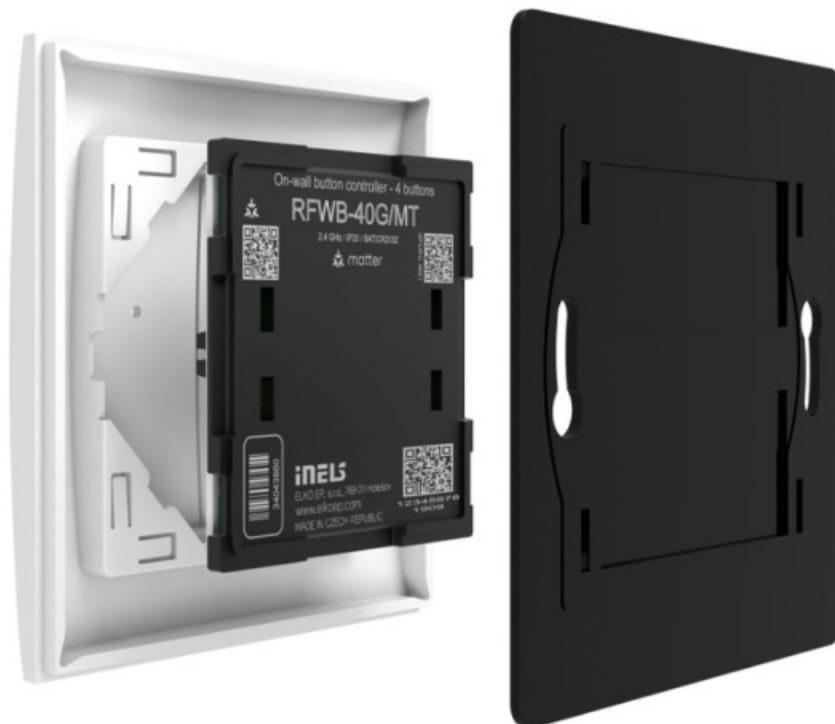




Inels Wireless RFWB-40G-MT 4 Buttons Matter On Wall Button Controller Owner's Manual

[Home](#) » [Inels Wireless](#) » Inels Wireless RFWB-40G-MT 4 Buttons Matter On Wall Button Controller Owner's Manual 

Inels Wireless RFWB-40G-MT 4 Buttons Matter On Wall Button Controller



On-wall button controller – 4 buttons, MATTER

Contents

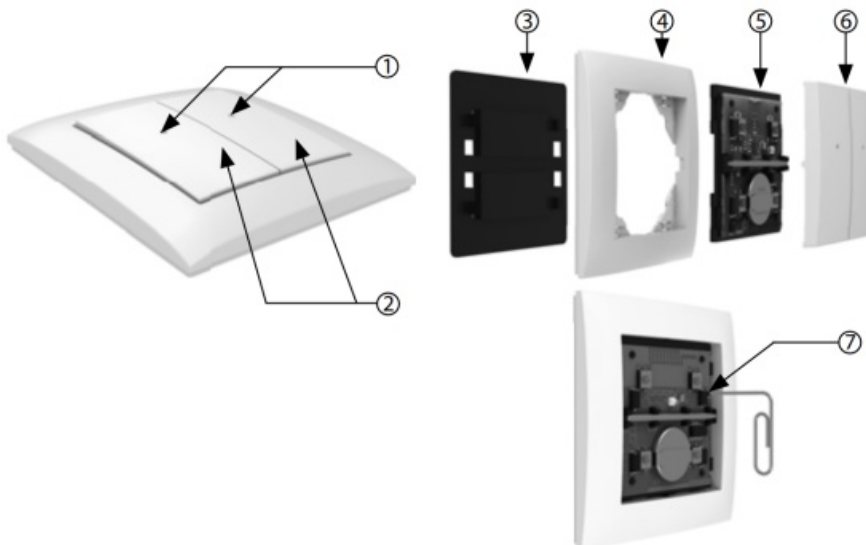
- 1 Connection
- 2 Characteristics
- 3 Technical Parameters
- 4 Warning
- 5 Customer Support
- 6 Documents / Resources
 - 6.1 References

Connection



To assign an element to the MATTER ecosystem, scan the QR code.

1. Transmitter indication
2. Control buttons
3. Base
4. Frame
5. Electronics
6. Cover
7. PROG button



Pairing mode

- Press the PROG button once
- Red LED flashes

Restore factory settings

- Hold PROG button >10s

Characteristics

- The pushbutton type wall-mounted controllers are used to control switches and dimmers (of lights, barriers, gates, window shutters, etc.).
- It communicates on the Thread protocol that guarantees compatibility with other products with the Matter support.
- Its flat design with a flat base predestines it for quick installation on any surface (by sticking or screwing it onto a junction box).
- After a short pressing the pushbutton, it transmits the preset command (short pressing, long pressing).
- Transmission of the command is indicated by a red LED.
- Design of the LOGUS90 switch frames (plastics, glass, wood, metal, stone).
- Battery power supply (3V battery CR 2032 is included) with lifetime of approx. 2 years, depending on the frequency of use.
- The applicable reach is up to 200m (in free area).
- The element with the actuator can be paired through a border router supporting Matter and through an application supporting Matter. The border router is understood as equipment such as HomePod Mini, Google Nest Hub or Samsung SmartThings Station.

Technical Parameters

Supply voltage:	3 V CR 2032 battery
Battery life:	around 2 years based on frequency of use
Transmission indication:	red LED
umber of buttons:	4
Application protocol:	Matter
Communication protocol:	THREAD
Frequency	2,4 GHz
Signal transmission method:	MESH
Range	in open space up to 200 m
Other data	
Operating temperature:	-10 to +50 °C
Operating position:	any
Mounting:	glue/screws
Protection	IP20
Contamination degree:	2
Dimensions frame	
plastic	85 x 85 x 16 mm
– metal, glass, wood, granite:	94 x 94 x 16 mm
Weight (plastic):	39 g
Standards:	EN 60730, EN 63044, EN 300 220, EN 301 489

Warning

Instruction manual is designated for mounting and also for user of the device. It is always a part of its packing. Installation and connection can be carried out only by a person with adequate professional qualification upon understanding this instruction manual and functions of the device, and while observing all valid regulations.

Trouble-free function of the device also depends on transportation, storing and handling. In case you notice any sign of damage, deformation, malfunction or missing part, do not install this device and return it to its seller. It is necessary to treat this product and its parts as electronic waste after its lifetime is terminated. Before starting installation, make sure that all wires, connected parts or terminals are de-energized.

While mounting and servicing observe safety regulations, norms, directives and professional, and export regulations for working with electrical devices. Do not touch parts of the device that are energized – life threat. Due to transmissivity of RF signal, observe correct location of RF components in a building where the installation is taking place. RF Control is designated only for mounting in interiors. Devices are not designated for installation into exteriors and humid spaces. The must not be installed into metal switchboards and into plastic switchboards with metal door – transmissivity of RF signal is then impossible. RF Control is not recommended for pulleys etc. – radiofrequency signal can be shielded by an obstruction, interfered, battery of the transceiver can get flat etc. and thus disable remote control.

Customer Support



www.elko.li/rfwb-40g-mt

ELKO EP declares that the RFWB-40G/MT type
of equipment complies with Directives 2014/53/
EU, 2011/65/EU, 2015/863/EU and 2014/35/


EU. The full EU Declaration of Conformity is at:

<https://www.elkoep.com/on-wall-but-4-buttons-matter-rfwb-40gmt>

Tel.: +420 573 514 211, e-mail: elko@elkoep.com, www.elkoep.com



Documents / Resources

	<p>Inels Wireless RFWB-40G-MT 4 Buttons Matter On Wall Button Controller [pdf] Owner's Manual</p> <p>RFWB-40G-MT, RFWB-40G-MT 4 Buttons Matter On Wall Button Controller, RFWB-40G-MT, 4 Buttons Matter On Wall Button Controller, On Wall Button Controller, Button Controller, Controller</p>
--	---

References

- [ElkoEP - Výrobce elektronických přístrojů • ELKO EP POLAND Sp. z o.o.](#)
- [ELKO EP - Hersteller von elektronischen Geräten • ELKO EP Germany](#)
- [ElkoEP - Fabricante de dispositivos electrónicos • ELKO EP ESPAÑA](#)
- [User Manual](#)

[Manuals+](#), [Privacy Policy](#)

This website is an independent publication and is neither affiliated with nor endorsed by any of the trademark owners. The "Bluetooth®" word mark and logos are registered trademarks owned by Bluetooth SIG, Inc. The "Wi-Fi®" word mark and logos are registered trademarks owned by the Wi-Fi Alliance. Any use of these marks on this website does not imply any affiliation with or endorsement.