



# Inditech 75X140 External Access Control Num Lock User Manual

[Home](#) » [Inditech](#) » Inditech 75X140 External Access Control Num Lock User Manual 

## Contents

- 1 Inditech 75X140 External Access Control Num Lock
- 2 Specifications
- 3 INTRODUCTION
- 4 PRODUCT NAME/MODEL NO
- 5 PRODUCT DESCRIPTION
- 6 FEATURES
- 7 INSTALLATION STEPS
- 8 MOUNTING DETAILS
- 9 CALIBRATION / CONFIGURATION FOR PASSWORD SET AND RESET PROCESS
- 10 Documents / Resources
  - 10.1 References



**Inditech 75X140 External Access Control Num Lock**



## Specifications

- **Product Name/Model No:** External Access Control – Numlock
- **Product Description:** This product provides NUMLOCK-based protection. It allows access to the elevator car by entering a 4-digit password. Incorrect password entries will not book any floor calls.
- **Features:**
  - Slim Design with SS Frame and Shiny Attractive Acrylic Fascia
  - High Precision Capacitive Touch Buttons
  - Numeric Keypad
  - Fast Recognition
  - Single Dry Contact
  - Simple Installation and Configuration
  - Suitable for Inditech COP/LOP
  - Compatible with any make COP and LOP using Single Dry Contact

## Installation Steps:

**Note:** Installation and Commissioning of the COP is to be done by an Authorized, Trained technician of the Elevator Company.

1. Remove the back plate of the unit.
2. Mount the back plate of the unit on the car surface or wall as per the mounting details provided.
3. Connect the supply voltage (24VDC) to J4 connector pin no. 1 (+24) and pin no. 2 (GND).
4. Connect the PO (Pole) and NO (Normally Open) wires to J4 connector pin no. 3 and pin no. 4 respectively for button function connection. Refer to the wiring/connection details for more information.
5. Perform the calibration process as per the calibration/configuration set and reset process provided.

## Wiring/Connection Details:

Supply voltage is 24VDC. Connect the black wire (+24) to the positive terminal and the brown wire to the ground

terminal. Connect the relay output between the red wire (Pole) and the orange wire (Normally Open). This is a dry contact, and upon successful operation, this contact becomes short. Normally, it remains open.

#### **Mounting Details:**

The unit should be mounted on the car surface or wall using the provided back plate and unit frame with fascia. Refer to the mounting details for more information.

#### **Calibration/Configuration for Password Set and Reset Process:**

To set up the access system, calibration is required:

**Calibration of Numlock Access System:** The numeric keypad interface in the access system is a basic and important feature for restricted access. It allows users to access the elevator car by entering the correct password. The numeric access system provides two features: accessing the elevator car and changing the user password for accessing the elevator car.

#### **FAQ:**

##### **Q: Can this product be integrated with any make COP/LOP?**

A: Yes, this product can be integrated with any Inditech COP/LOP or other make COP using a single dry contact. Please check the specifications of the other make COP/LOP before purchasing this product.

## **INTRODUCTION**

As the name indicates, this system is used to provide restricted access to Landing Operating Panel (LOP) and Car Operating Panel (COP). The aim of this accessories is to provide secured access to the elevator car by providing numeric digit keypad for password access systems which provides high level security. The system is used where, user wish to have limited access or authorized person to use the elevator. This is an External Installation Device.

## **PRODUCT NAME/MODEL NO**

### **EXTERNAL ACCESS CONTROL – NUMLOCK**



## **PRODUCT DESCRIPTION**

- This product provide NUMLOCK based protection. If user knows the 4-digit password, he can enter the password number and operate the lift. With wrong NUMLOCK password, lift will not book any floor call.
- This device comes as external installation and can be integrated with any Inditech COP/LOP or can be interface with other make COP using single dry contact. You need to check the specifications of the other make COP/LOP before buying this product.

## FEATURES

- Slim Design with SS FRAME with Shiny attractive ACRYLIC FASCIA.
- High precision capacitive touch buttons.
- Numeric Keypad.
- Fast recognition.
- Single dry contact.
- Simple installation and configuration.
- Suitable for Inditech COP/LOP. This product is also suitable any make COP and LOP using Single dry contact.

## SPECIFICATIONS

- Mount Type- Wall Mount
- Fascia- Black/White
- Input Supply- 24V
- NUMLOCK – Capacitive Touch
- Size (W\*H\*T)-75x140x18MM
- Reliable
- Easy to use
- Elegant and Durable

## INSTALLATION STEPS

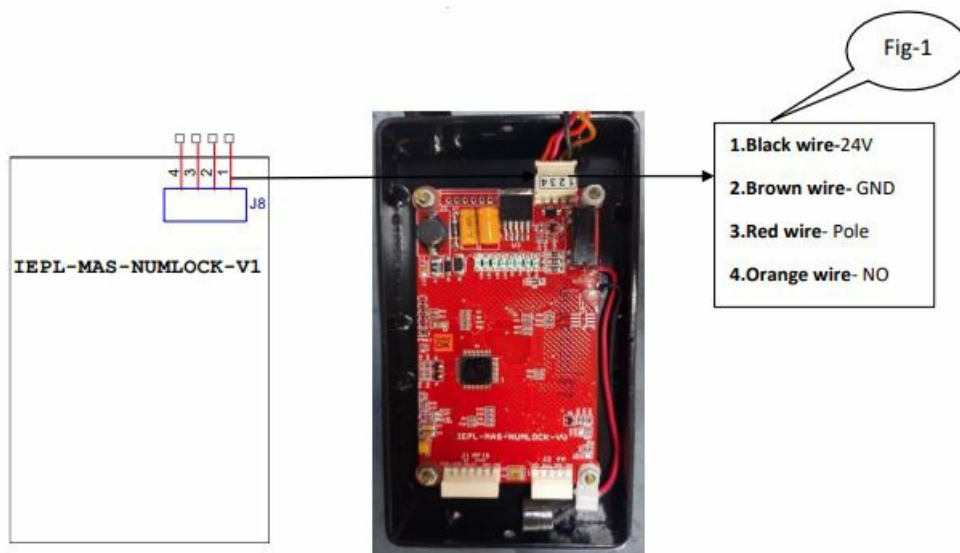
**Note:** Installation and Commissioning of the COP is to be done by Authorized, Trained technician of Elevator Company.

Following are the steps to be taken for the installation of this unit.

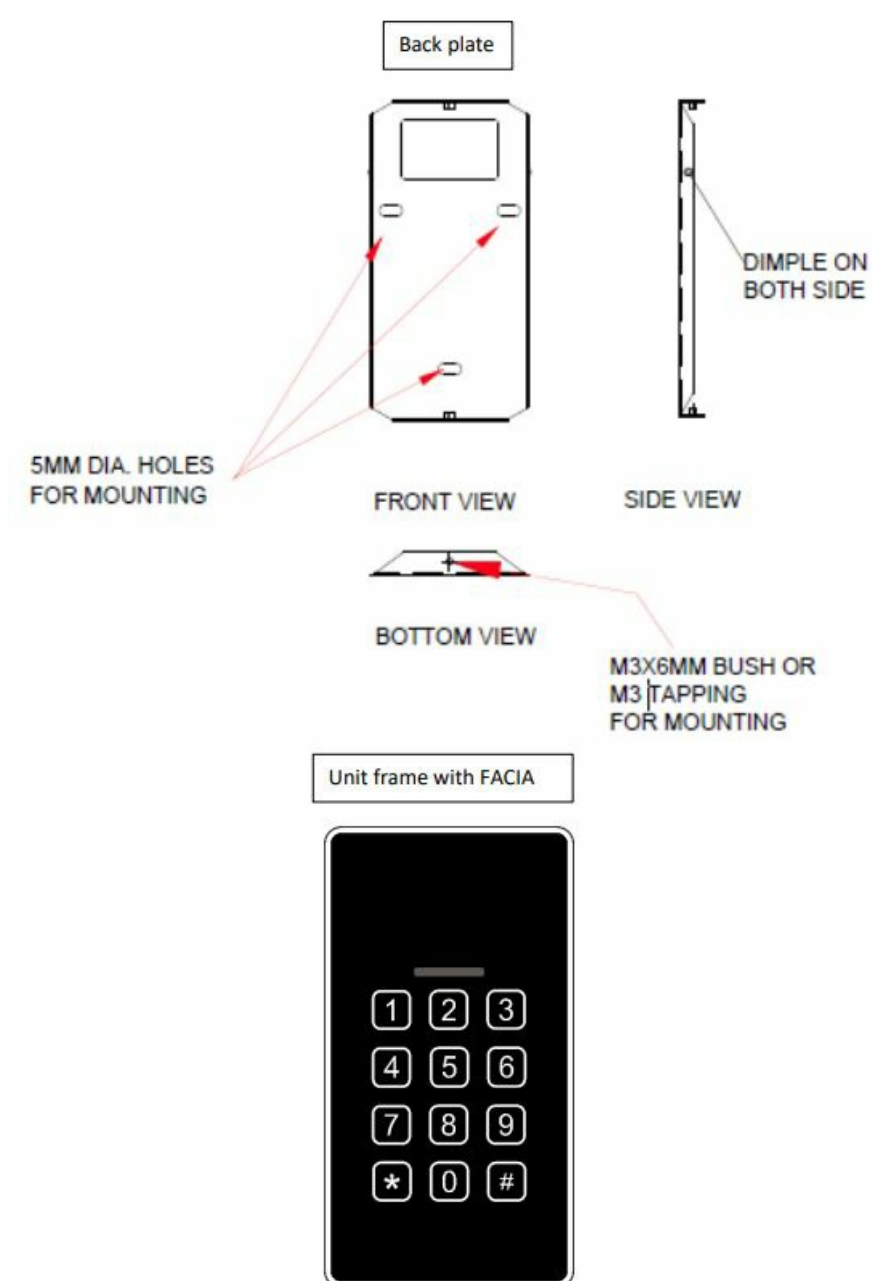
- Remove the back plate of UNIT.
- Mount the back plate of UNIT on the CAR surface or WALL as per point no.8 MOUNTING DETAILS.
- Give supply 24V, GND to J4 connector pin no. 1 & 2 and PO, NO to pin no. 3 & 4 for button function connection as per below mentioned in point no.7 WIRING / CONNECTION DETAILS.
- Do the calibration process as per point no.9 CALIBRATION CONFIGURATION SET AND RESET PROCESS.

## WIRING / CONNECTION DETAILS

- Supply voltage is 24VDC, connect it to Black wire (+24) and Brown wire to Ground. Refer fig-1.
- Connect the relay output between (Red wire) 3 and (Orange wire) 4.
- Note that this is dry contact, upon successful operation this contact become short. Normally it remains open.



## MOUNTING DETAILS

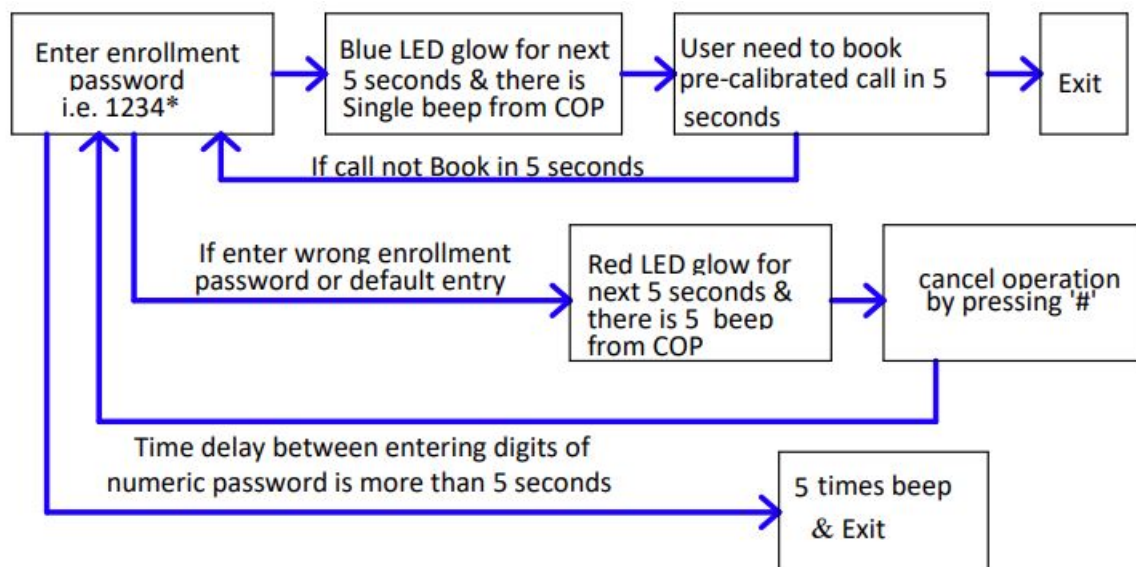


## CALIBRATION / CONFIGURATION FOR PASSWORD SET AND RESET PROCESS

You need to do the calibration for access:

### CALIBRATION OF NUMLOCK ACCESS SYSTEM:

- The numeric keypad interface in the access systems is basic and important feature for restricted access. Which provide access to user for elevators car by entering correct password. The numeric access system provides user two features that is accessing the elevator car and to change the user password for accessing the elevator car.
- To access the elevator using numeric keypad interface, user has to enter correct password for the same. The default password for NUMLOCK access is 1234 terminated by \*. The star key is used as enter key and start key. If the enter password is correct, then LEDs on the top of Numeric interface will glow blue and beep from COP will generated as indication of correct password. The LEDs will be kept on for next five seconds, and user is supposed to book a pre-calibrated floor call in between this time. Once LEDS goes off, user will not able to book a call for elevator. Again for the same user has to enter default password.
- If user enters wrong password or wrong entry is done by the user, then the buzzer will beep five times and LEDs will glow red as indication of false operation. Also if by mistake user entered wrong entry then one can cancel the operation by pressing #. The key # will terminate every operation running on the NUMLOCK. If user presses a touch key on the numeric keypad once and does not press any key afterwards then it will wait for next five seconds for key to enter else, it beeps five times and exits the process.



**DIA:** NUMLOCK ACCESS SYSTEM: FOR DEFAULT PASSWORD

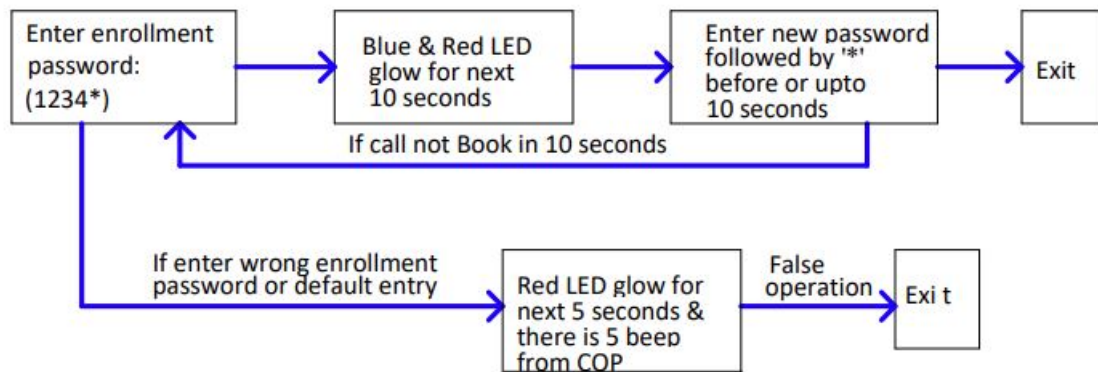
**NOTE:** Please remember, you need to remember the changed password, which would be used change the password again.

### CHANGING NUMLOCK PASSWORD:

- As described previously, user can access the elevator car using default user password that is 1234 terminated by \*. As a feature user can also change this default password and can set its own desired password. For the same user have to follow few steps as below, press \* followed by existing default password that is 1234, if the

password is correct then LEDs start blinking red and blue as indication of process start, here user has to enter new four-digit user password terminated by \*. If the process goes as per given steps, then the buzzer will beep twice as indication of healthy completion of the process.

- Note, user must not enter new user password, as same as fingerprint password, it will result in error. If the user starts password changing process that is LED's start blinking and do not press any key afterwards, then process will continue for next 10 seconds and terminated with five times beep as an indication of false operation.
- If user enter wrong password, then the LED's will glow red and buzzer will beep five times.

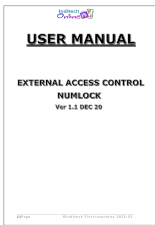


**DIA: NUMLOCK ACCESS SYSTEM: FOR PASSWORD CHANGE**

#### **COMPATIBILITY OF PRODUCT WITH INDITECH MAKE / OTHER MAKE AND PARALLEL / SERIAL INTERFACE.**

- Compatibility of product for INDITECH and for others one potential contact.

#### **Documents / Resources**

	<a href="#">Inditech 75X140 External Access Control Num Lock</a> [pdf] User Manual 75X140 External Access Control Num Lock, 75X140, External Access Control Num Lock, Access Control Num Lock, Control Num Lock, Num Lock, Lock
---	--

#### **References**

- [User Manual](#)