

Inateck KTU3FR-4P USB 3.0 PCI Express Card User Manual

[Home](#) » [inateck](#) » Inateck KTU3FR-4P USB 3.0 PCI Express Card User Manual 

Contents

- [1 Inateck KTU3FR-4P USB 3.0 PCI Express Card](#)
- [2 Product Information](#)
- [3 Product Usage Instructions](#)
- [4 Hardware Installation](#)
- [5 System Requirements](#)
- [6 Package List](#)
- [7 FCC Declaration of Conformity](#)
- [8 Documents / Resources](#)
 - [8.1 References](#)
- [9 Related Posts](#)

inateck®

Inateck KTU3FR-4P USB 3.0 PCI Express Card



Product Information

The KTU3FR-4P/ KT4006 USB 3.0 PCI Express Card is a hardware device that allows you to add USB 3.0 functionality to your computer. It comes with a user manual, driver CD, and necessary cables for installation. The card supports Windows 7/8/10 (32/64 bit) and Mac OS 10.8.2 or above. It requires an available PCI Express slot (PCI Express 2.0 or above) for installation.

Product Usage Instructions

1. Screw the PCI cover plate onto the PCI-E card, and then turn off the computer.
2. Plug the PCI-E card into the corresponding PCI-E slot.
3. If required, connect the power cable to the card.
4. Use the included screws or the screws of the computer case to fix the PCI-E card securely.
5. Turn on the computer. The driver should be installed automatically. If not, you can apply the driver from the included CD or download the latest driver from the Inateck official website (www.inateck.com).
6. Note that the PCI-E card does not support hot plug, so all the installation steps should be performed with the computer in shutdown mode.
7. Please be aware that USB 3.0 drivers are not supported on Mac or Linux OS.
8. For Windows 8/10, you don't have to install the driver manually.
9. If using the 4-Pin Molex power cable, ensure it is connected correctly.

Package Contents:

- 1 x USB 3.0 PCI Express Card
- 1 x Driver CD
- 1 x User Manual
- 1 x Screwdriver
- 1 x 4-Pin Molex Power Cable

- 1 x 15-Pin SATA Power Cable

Service Center:**North America:**

Inateck Technology Inc.

Tel: +1 (909) 698 7018 (Working day 9 AM – 5 PM PST)

Address: 2078 Francis St., Unit 14-02, Ontario, CA 91761, USA

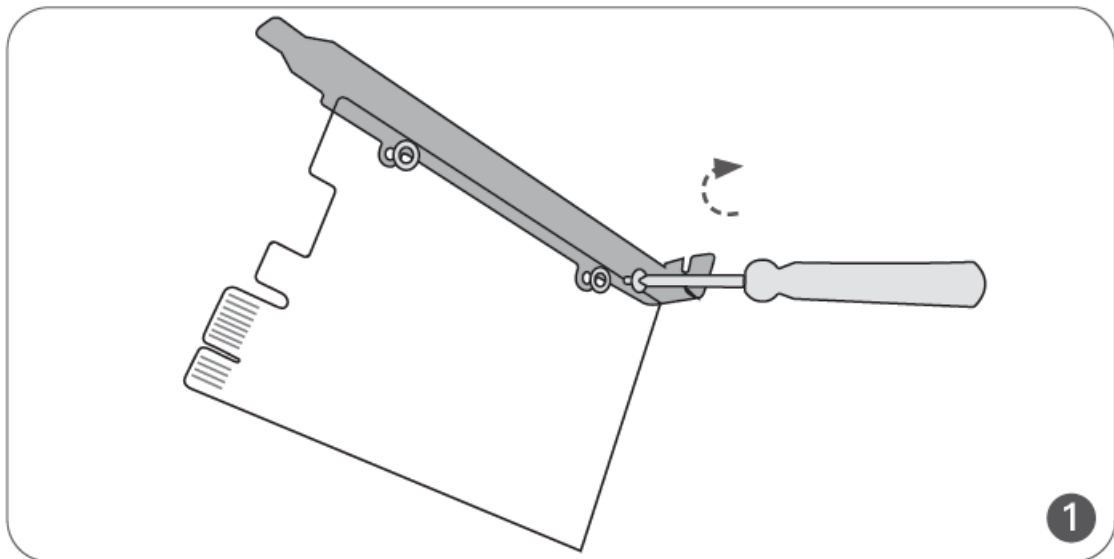
Manufacturer:

Shenzhen Inateck Technology Co., Ltd.

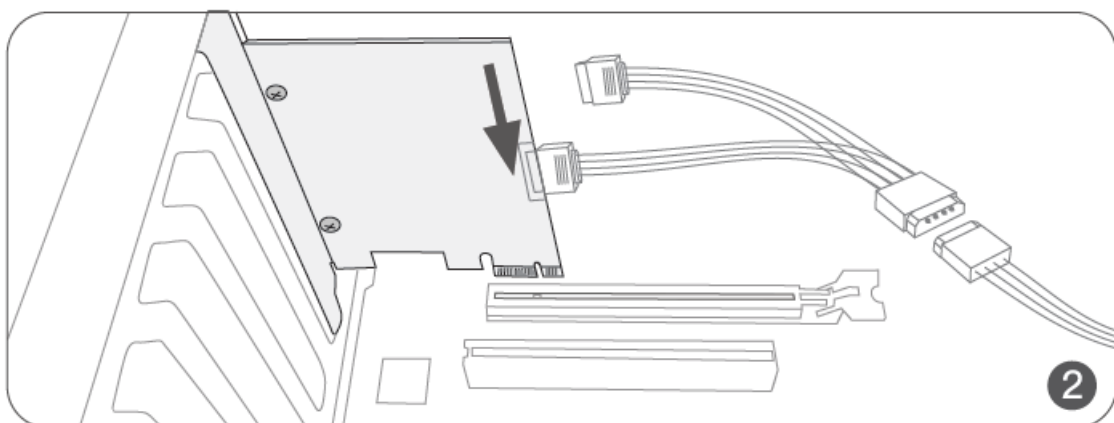
Address: Suite 2507, Block 11 in Tian An Cloud Park, Bantian Street, Longgang District, Shenzhen, Guangdong, China

Hardware Installation

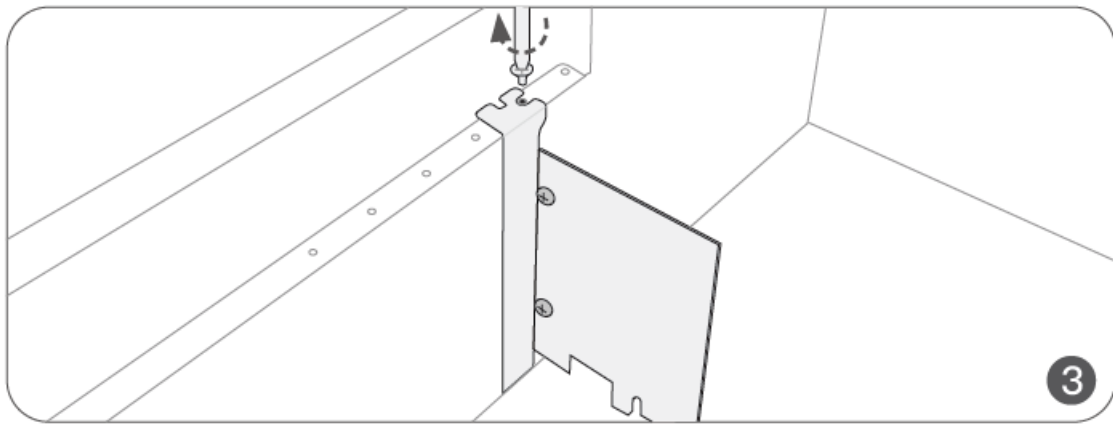
- Screw the PCI cover plate onto the PCI-E card, and then turn off the computer.



- Plug the PCI-E card into the corresponding PCI-E slot, and connect the power (if needed).

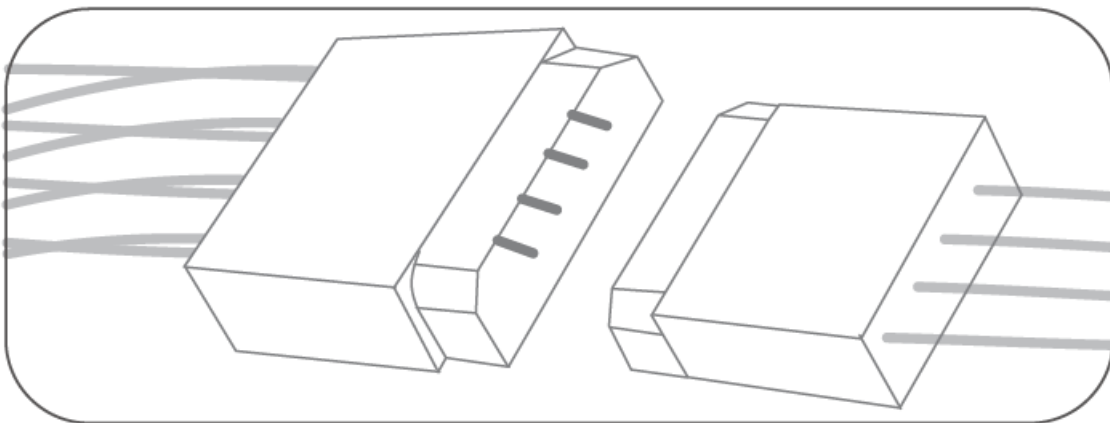


- Use the screws included or the screws of the computer case to fix the PCI-E card.



Note:

1. The driver will be installed automatically when the computer powers on. If not, please apply the driver in the CD, or download the latest driver on Inateck official site (www.inateck.com).
2. The PCI-E card does NOT support hot plug, so all the steps above should be operated under shutdown mode.
3. USB 3.0 Drivers are not supported on Mac or Linux OS.
4. On Windows 8/10, you don't have to
5. When using the 4 Pin Molex power cable, please connect the cable as required.



System Requirements

Windows 7/8/10 (32/64 bit); Mac OS 10.8.2 or above. One available PCI Express slot (PCI Express 2.0 or above).

Package List

- 1 x USB 3.0 PCI Express Card
- 1 x Driver CD
- 1 x User Manual
- 1 x Screwdriver
- 1x 4-Pin Molex power cable
- 1x 15-Pin SATA power cable

Service Center

Europe

F&M Technology GmbH

Tel: +49 341 5199 8410 (Working day 8 AM – 4 PM CET) Fax: +49 341 5199 8413

Address: Fraunhoferstraße 7, 04178 Leipzig, Deutschland

North America

Inateck Technology Inc.

Tel: +1 (909) 698 7018 (Working day 9 AM – 5 PM PST)

Address: 2078 Francis St., Unit 14-02, Ontario, CA 91761, USA

Manufacturer

Shenzhen Inateck Technology Co., Ltd.

Address: Suite 2507, Block 11 in Tian An Cloud Park, Bantian Street, Longgang District, Shenzhen, Guangdong, China

FCC Declaration of Conformity

This device complies with Part 15 of the FCC Rules Operation is subject to the following two conditions:

1. This device may not cause harmful interference, and
2. This device must accept any interference received, including interference that may cause undesired operation.

EU Declaration of Conformity

Inateck Co., Ltd. hereby declares that this device complies with the Directive 2014/30/EU . A copy of the Declaration of Conformity can be accessed from <https://www.inateck.de/pages/euro-compliance>.

Documents / Resources

	Inateck KTU3FR-4P USB 3.0 PCI Express Card [pdf] User Manual KTU3FR-4P, KT4006, KTU3FR-4P USB 3.0 PCI Express Card, USB 3.0 PCI Express Card, PC I Express Card, Express Card
---	--

References

- [In Inateck | Tablet Keyboard, USB-C Hub, Laptop Bag and More – Inateck Official](#)
- [In Inateck | Tablet-Tastaturen, USB-C Hubs, Laptop-Taschen und mehr – Inateck Official DE](#)