



## imupos S-200 All In One POS System Installation Guide

[Home](#) » [imupos](#) » imupos S-200 All In One POS System Installation Guide 

imupos S-200 All In One POS System Installation Guide



## Contents

- 1 Safety Precautions
- 2 Package Content
- 3 Configuration
- 4 I/O Ports
- 5 System Connection and Power on
- 6 Installation Options
- 7 SSD Replacement
- 8 Specification
- 9 Documents / Resources
  - 9.1 References
- 10 Related Posts

## Safety Precautions

**Be sure to read the Safety Precautions before using the POS system.**

- Before connecting, make sure the operating voltage is AC100 ~ 240V. Otherwise, you may damage the system.
- Do not install the system in an extremely hot or cold place.
- Avoid exposing the product in direct sunlight or in an enclosed space for a long period of time.
- Be careful not to place the system near other high-frequency electromagnetic devices; there is a strong possibility it will lead to a system malfunction or system error.
- Do not place heavy objects on the system.
- Please do not allow external substances to be contaminated inside the system.
- Do not change the motherboard's battery by yourself. It can damage the system.
- Before disassembling the system, disconnect all power and cables.
- Do not remove or repair the system by yourself. We highly recommend an engineer's assistance or an experienced technician to open the system, especially the LCD and touch panels which could be easily broken.
- An electrical outlet is needed near the device and it should be easily accessible.
- Risk of explosion if battery is replaced by an incorrect type. Replace only with the same type of batteries recommended by the manufacturer.
- This device complies with the EMC (Electromagnetic Compatibility) Regulations, for business purposes. Distributors and users are advised of this matter.
- Do not use excessive force when using or pressing the touch panel. Do not use objects with sharp edges on the touch panel.
- Please exchange the equipment if you mistakenly sold or purchased this product.
- Cleaning and Maintenance is relevantly necessary for POS terminal to be operated well.

### POS Terminal Security Guideline

#### Operating System Security

System-provided and managed by the operating system's default security settings must be configured.

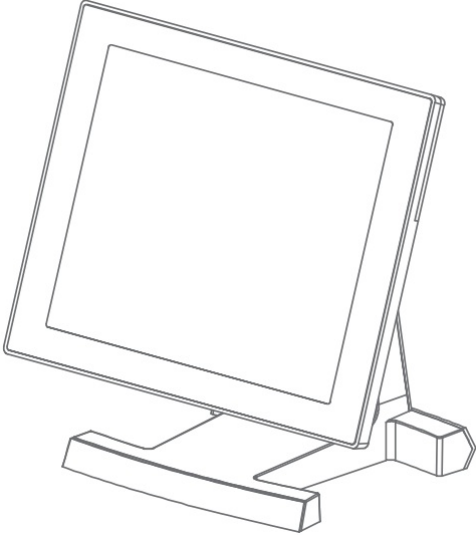
### Touch Screen Security Guideline

Please take special care with the touch panel as it is vulnerable to scratches.

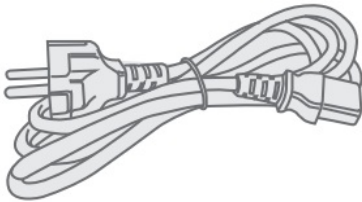
- Do not use excessive force when using or pressing the touch panel. Do not use objects with sharp edges on the touch panel.
- Be careful not to spill any liquid on the screen.
- Turn off the power switch and unplug all cables before cleaning the screen and/or the system.
- Use a soft, clean, dry cloth for cleaning the system, and do not use chemicals or detergents.

## Package Content

- POS TERMINAL



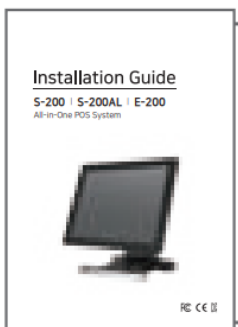
- Power cord



- Adapter

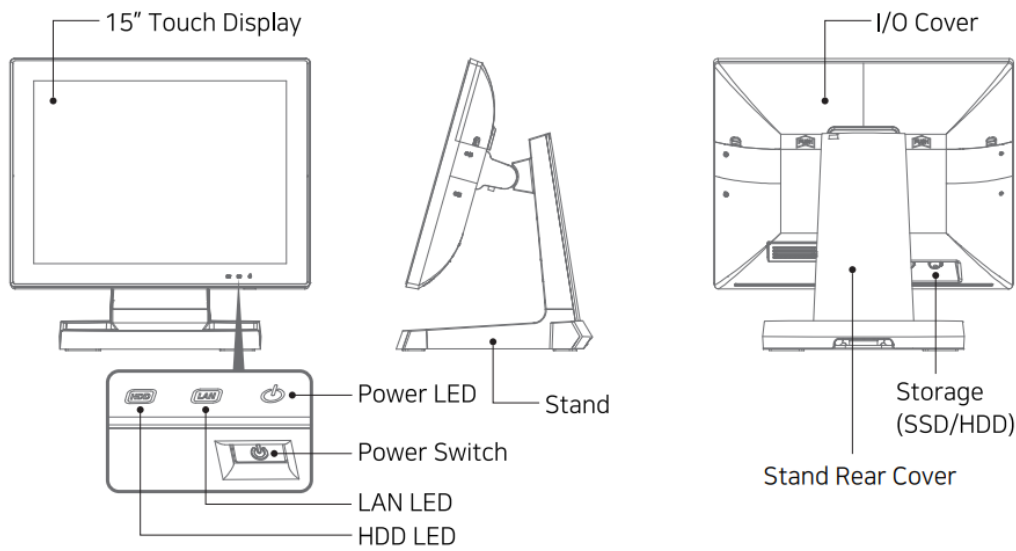


- Installation Guide



Component images are for reference only and may vary by model and option.

## Configuration

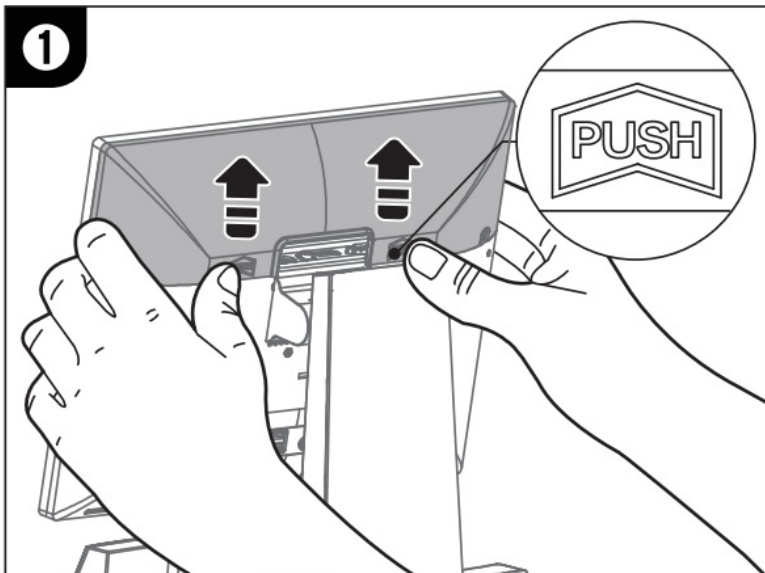


## I/O Ports

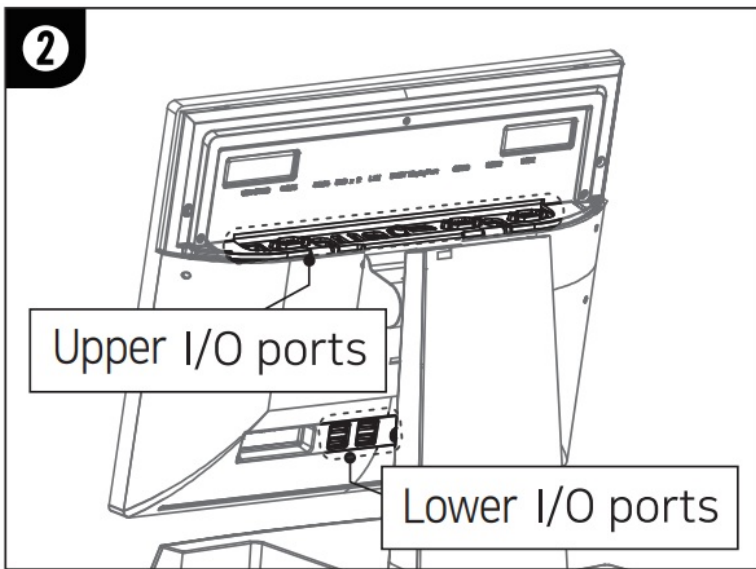
### I/O Cover Disassembly

**Please proceed with I/O ports connection after after powering off the system**

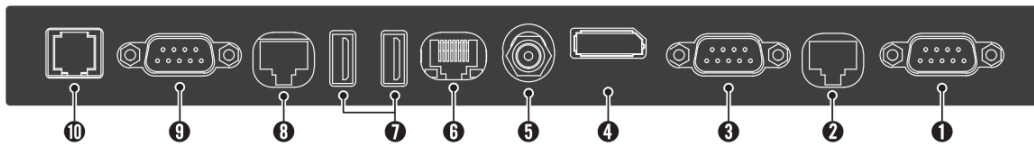
1. I/O cover will be disassembled by pushing the "PUSH" part of both sides.



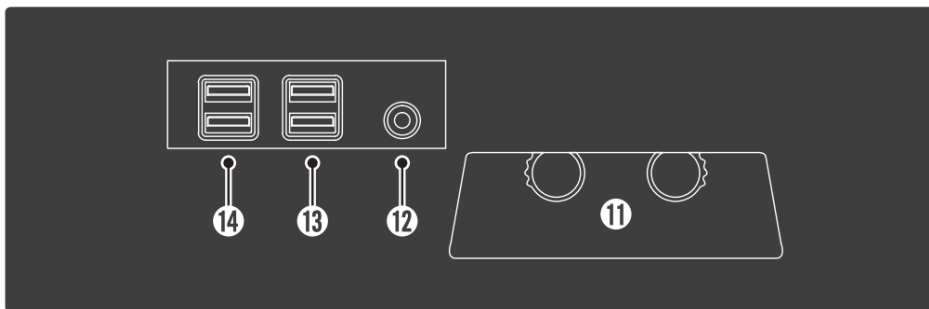
2. Please connect the I/O ports after checking the locations of upper I/O and lower I/O ports



### Upper I/O Ports



### Lower I/O Ports



I/O ports can be changed based on models/specifications/options.

\*1.0, 0, 0, special-purpose port

From the RJ45 port supply to power connector used by RJ50 plug.

RJ45 Pin Map assignments		
<p>18: RJ45 1-10 RJ50</p>	Signal NamePJ45	
	DCD	1
	DSR	2
	TXD	3
	RXD	4
	RTS	5
	CTS	
	GND	7
	DTR	8

1. Serial(DB9)-COM1
2. Serial (RJ45/RJ50) – COM2
3. Serial (DB9)-COM3
4. DisplayPort
5. DC 12V
6. LAN
7. 1 USB 1/2
8. Serial(RJ45/RJ50) – COM4
9. Serial(DB9) – COM5
10. Card Reader(RJ11) – USB/COM6
11. SSD/HDD
12. Audio
13. USB 3/4
14. USB 5/6

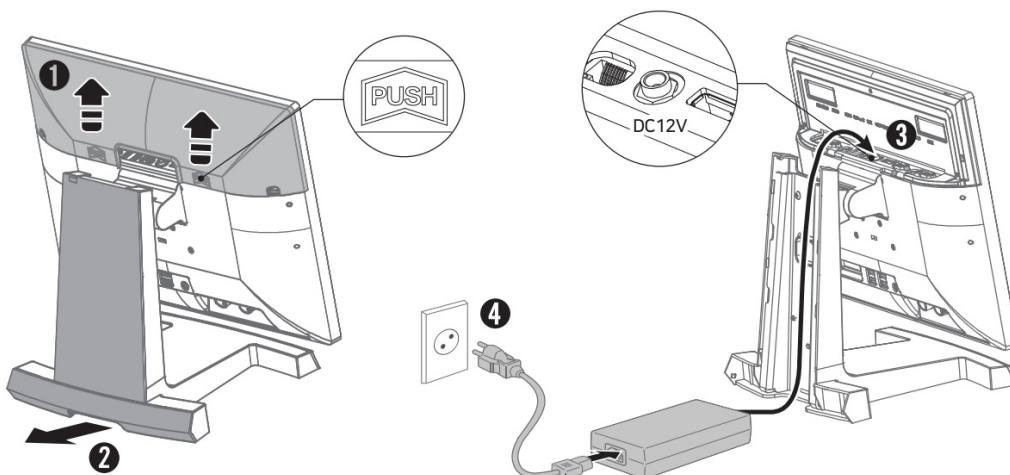
## System Connection and Power on

Please install the system referring to video clip thru QR code written in manual.

**Please connect power addptor DC jack and power cord by turns after all option items are connected.**



1. I/O cover will be disassembled by pushing the “PUSH” part of both sides.
2. Please disassemble it by pushing up stand rear case.
3. Please insert power adaptor cable by turning it into DC 12V port at upper I/O ports.
4. Please connect power cord after assembling it in a reverse way of disassemble.

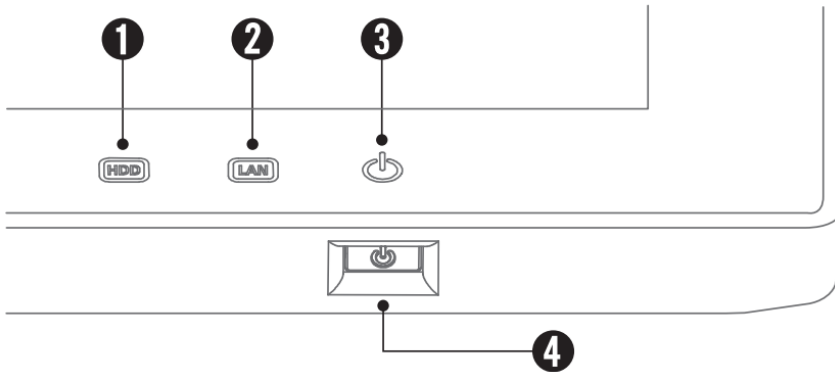




**Power on**  
**Please turn the power on after installing all optional items.**

The power cord connects 220V (110V) power after fastening the DC plug to the mainbody of POS. Power Supply Indicator is located on the lower right side of the monitor. When power is connected, the LED will light up. Each LED lamp will indicate the operation status.

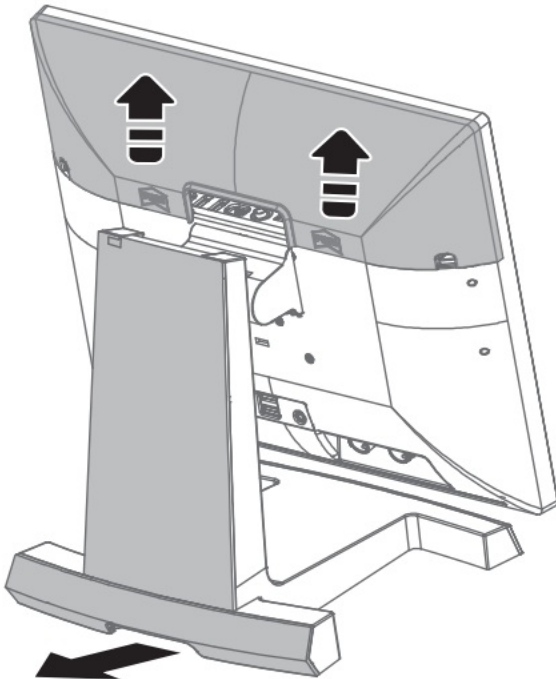
1. HDD LED: Operation mode (GREEN)
2. LAN LED: LAN Connection (RED)
3. Power LED: Power Connection (BLUE)
4. Power Switch



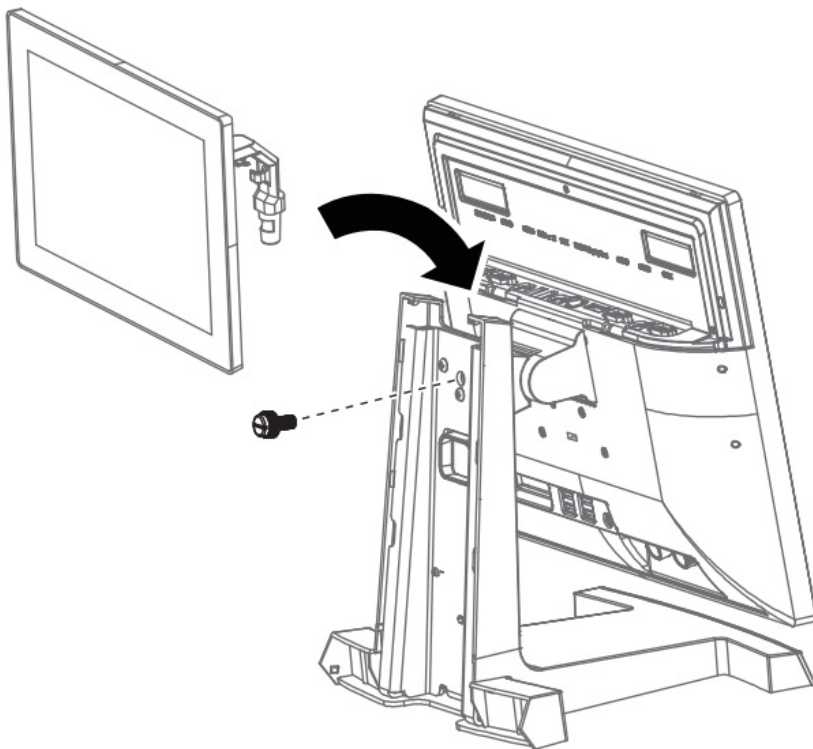
## Installation Options

**Please turn it on after connecting all the option items.**

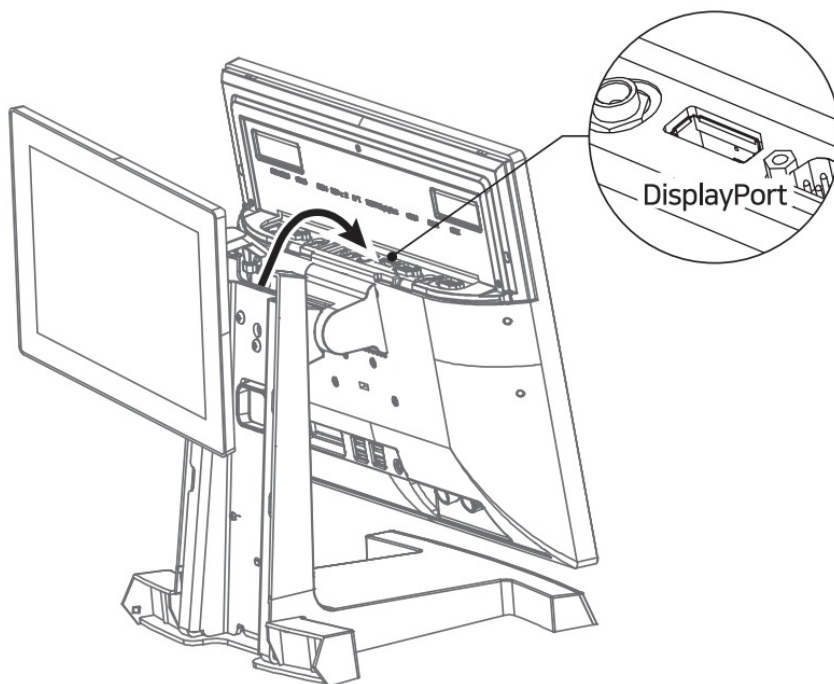
1. Please disassemble I/O cover and stand rear cover.



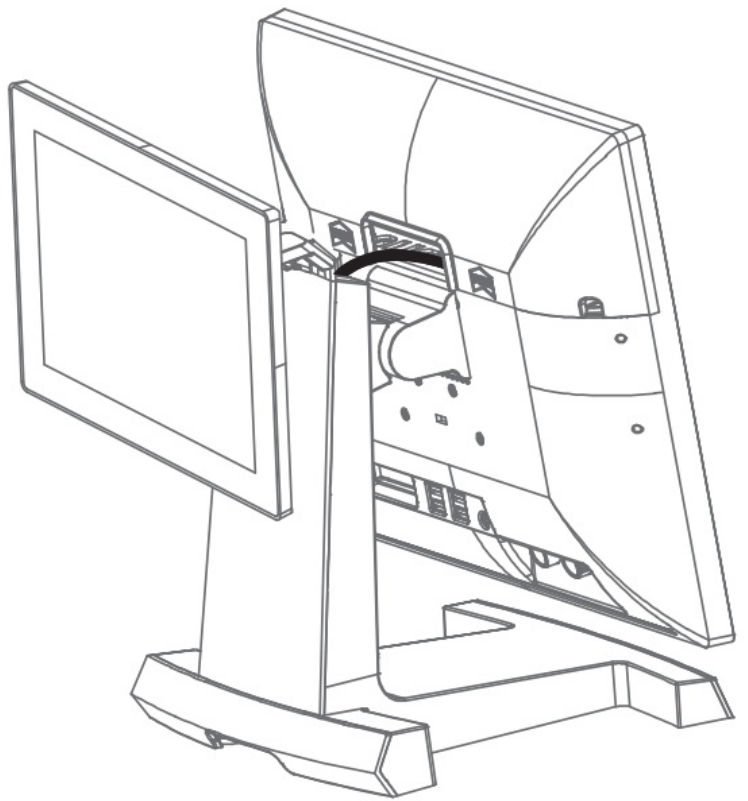
2. Please strongly tighten the plastic bolt at the rear side of stand after inserting the round-edge part of 2nd display cradle into the hole between POS system and stand.



3. Please insert cable into display port out of I/O ports.



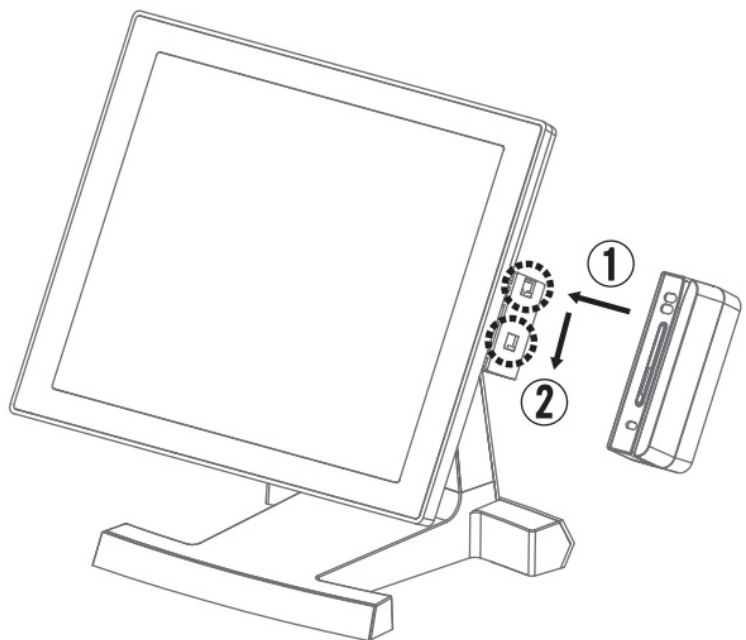




4. Please assemble I/O cover and stand rear cover.

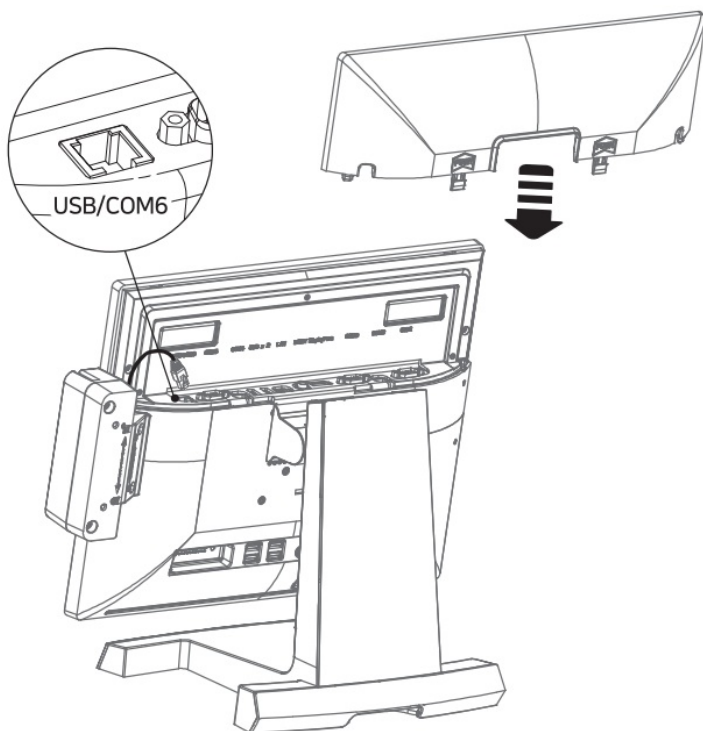
### Card Reader

1. Please insert Card Reader at the groove in monitor to the arrow direction ① after disassembling I/O cover and



set it well by pushing to the arrow direction ②.

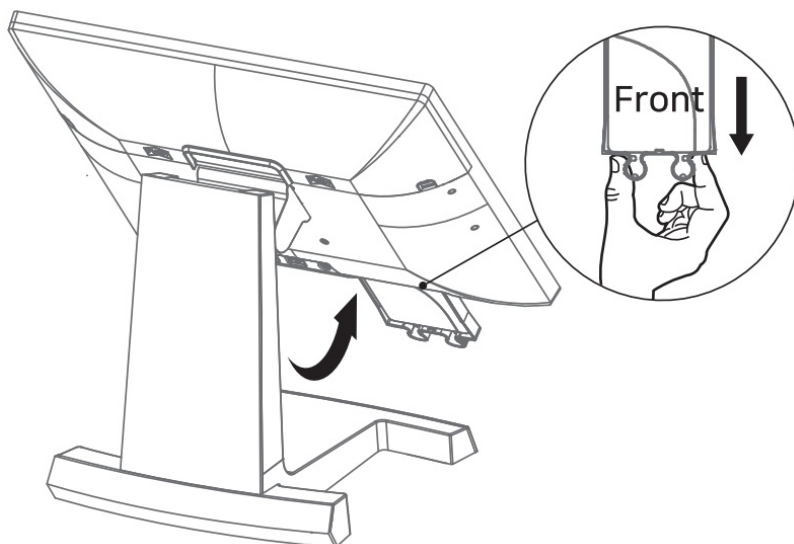
2. Please close I/O cover after inserting the cable into COM6/USB port of I/O ports.



## SSD Replacement

**⚠ Please turn the power off after finishing SSD replacement.**

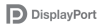
1. Please push the monitor up and pull out the SSD in Disk Tray by holding handle of Disk Tray.  
Please be cautious on direction when it is assembled



2. When SSD is replaced, please separate SSD by pushing it up through the hole of Tray.




Model	S-200	S-200AL	E-200
Processor	7th cc 8th Generation Intel® Core™ i3, i5, i7 Processors	(Fargess)1 2th &mate) Intel® Core™ i311219.8602 2Etai70259.1)Fnicessys	Intel® Core™ Quad-core Processor .6412 2.0GHz/2.6GRz
Chipset /BIOS	Inter Kaby Lake SoC / AMI	kit& AbeLake SoC /AMI UEFI	Intel® Elkhart Lake SoC /Ami
Storage	2.5SATA 111550 12806 (SSD 256/51268. optional)		
Memory	4E4350-DIM		
	DDR4 2133141-lz x 2 (Max 3268 optimal)	00R4 3200MHz x 1 (Max 32GELOPtboal)	DOR4 2666MHz-3200 MHz x1 (Max 32GB, optional)
Graphics	Met HDCraphcs 620/ Intel® Iris® &Wits 640	Fatalt131~taf 9084110b1Mteitt Peen fatfrllZOICot0-139-ttf is' Ueda	Intel® UHD Graphics fe 10th Gen kites Processors
multi Monitor	3 fit of Displays Supported) -up to 3 monitors (optional)		
OS	Windows 10 IoT Enterprise 64bit, Windows 11 64bit		
Display & Touch			
Display Type	15 LED Backlight (1024 x 768 Resolution) *E-Senesis 156 FHD (1920 x 1080 Resolution/ 16:9) Available		

Touch	PCAP 10 Point Multi-touch		
I/O Interfaces[Rear Top & Bottom Ports)Interfaces[Rear Top			
USB	2x USB 2.0 (Rear Top x 2), 4x USB 3.0 Rear Bottom x 4) 1 x USB 2.0 (RJ11)		
Serial	6(DB9 x 3, R/50(RJ45) x 2, RJ11 x 1)COM1, 3, 5(DB9): +5V on Pin #9, Selectable by BIOSRJ50, RJ45): Support +5V and 12V for Special Devices and can be used for Kitchen PrinterCOM2 4 ( COM 6(RJ11): USB 2.0 and RS232 with +5V/1A for Card Reader		
Audio	1 x Audio-out/ 3.5mm		
Display Port	1 x DisplayPort(Included 1 x USB 2.0/ Power Delivery +12V)* Can be used for HDMI and DVI, VGA M onitor by Converter Cable		
Speake r(option al	1W x 1	3W x 1	
Peripheral Options			
2nd Dis play 	LCD Type: 9.7" or 15" LCD (USB Port x 1) Touch Monitor: 9.7" or 15" LCD with Capacitive Touch (US B Port x 1) – by single cable(no power & USB cable) Standard Monitor: supported standard DP, HDM I, DVI, VGA monitor by change monitor cable Standard and Powered DP MST Hub: supported standar d or powered(customized) DP MST Hub.		
Custom er Displ ay(CDP	FSTN LCD Type(20 columns x 2 lines)		
Card R eader( MSR/S CR	Magnetic Stripe Reader: ISO 7811 ID-1 All Tracks Interface: USB(HID) and RS232C(COM6		
Dallas Reader	Dallas Reader(I-button): 6 Characters/Prefix and Suffix Interface: USB(HID) and RS232C(COM6)		
Physical Dimension			
Physica l Dimen sion	362 X 237 X 352 (mm)		
Weight	5,0 Kg		
Environment			
Power Supply	DC 12V/5A (AC 100V~240V, 60W	DC 12V/7A ( AC 100V~24 0V, 84W)	DC 12V/5A (AC 100V~240V, 60W)
Temper ature	Operating Temp : 0~40°C / Storage Temp : -20~60°C / Humidity : 20~90%H non-condensing		
Certific ations	CE, FCC, KC		



This user manual is provided for informational purposes and cannot be reproduced or distributed without consent under the Copyright Act. Specifications in the user manual are subject to change without prior notice.

## Documents / Resources

<div><div><div>Installation Guide</div><div>S-200   S-200AL   E-200</div><div>All-in-One POS System</div></div><div></div><div>HC CE III</div></div>	<div><div><a href="#">imupos S-200 All In One POS System</a> [pdf] Installation Guide</div><div>S-200, S-200AL, E-200, S-200 All In One POS System, All In One POS System, POS System, System</div></div>
---	---

## References

- [User Manual](#)