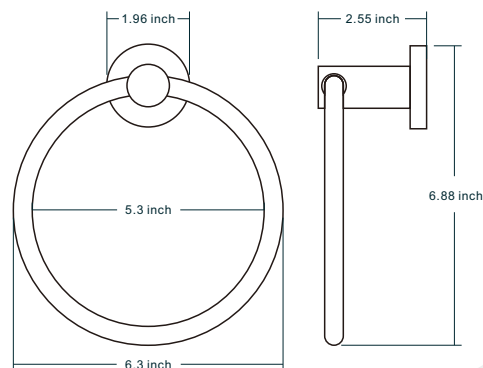
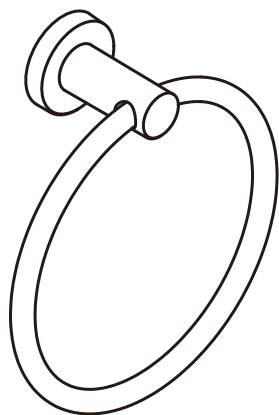




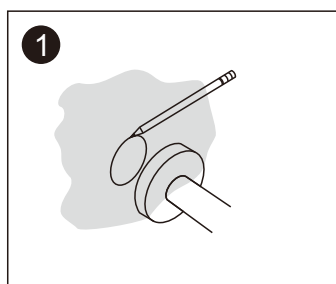
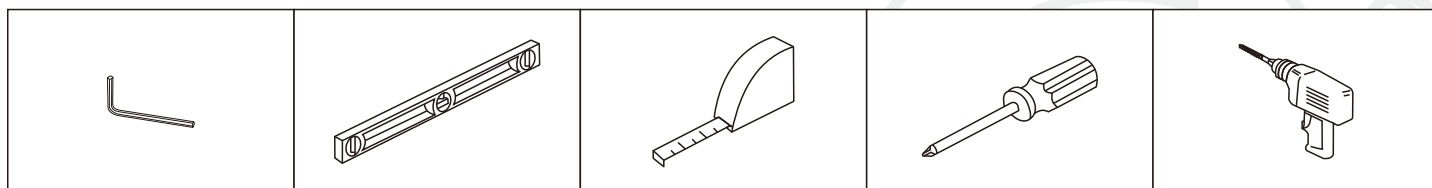
MODELS:FF0220

# INSTALLATION INSTRUCTIONS

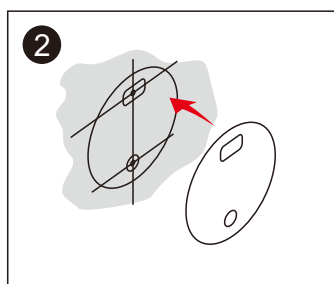
TOWEL RING



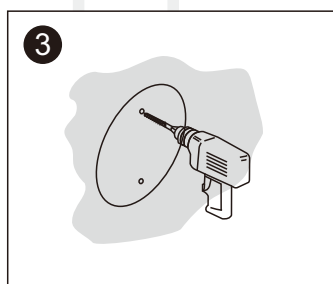
You may need



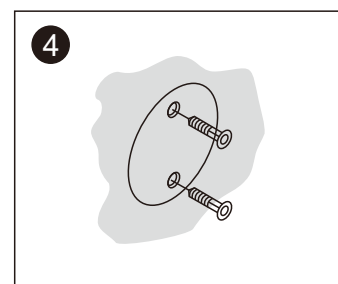
1. Place Towel Ring on wall where you need to install, mark the outline of product base with a pen.



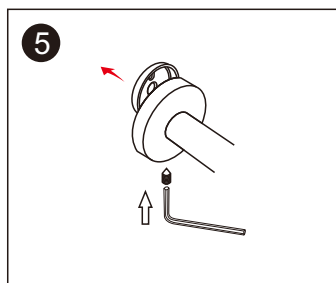
2. Cover mounting bracket paper on marked circle base, mark 2 points according to paper holes to drill wall holes.



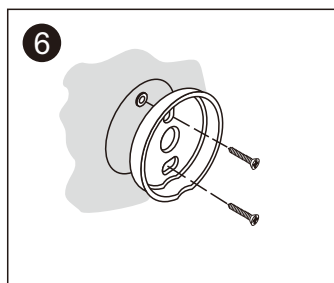
3. Use 1/4 inch drill to drill holes on wall which you marked, the depth same as white anchor.



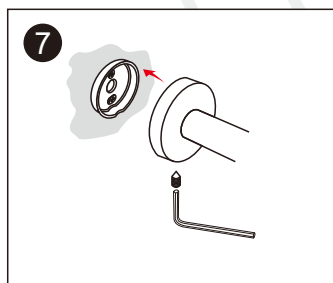
4. Use hammer hit the white anchors into holes, make sure who leanchor into hole.



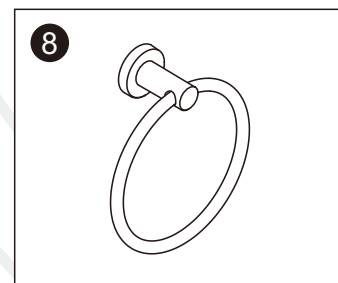
5. Use allen wrench loosen the setting screw and remove the mounting bracket from accessory.



6. Use screwdriver tighten the mounting bracket on wall stable.



7. Put the accessory onto mounting bracket and tighten the setting screw in bottom.



8. Get the sturdy towel ring.