



NanoPhotometer® N120/NP80/N60/N50/C40
NanoPhotometer Product Family



Touch model with touchscreen; Mobile model includes touchscreen and battery pack

Contents [[hide](#)]

1 NanoPhotometer® Overview: General Features

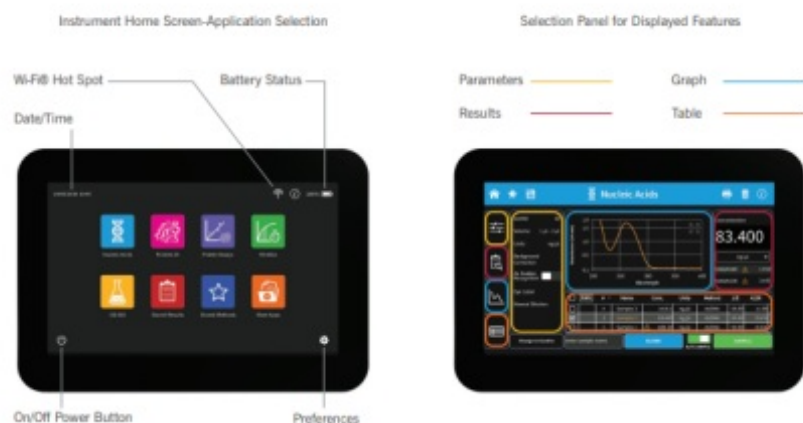
2 Installation

3 NanoPhotometer® N120 Additional Features

4 Documents / Resources

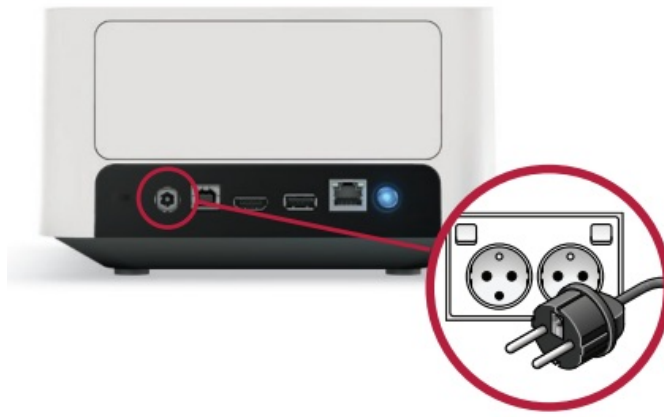
4.1 References

NanoPhotometer® Overview: General Features



Installation

1. Connect to Power



Use properly grounded outlet!

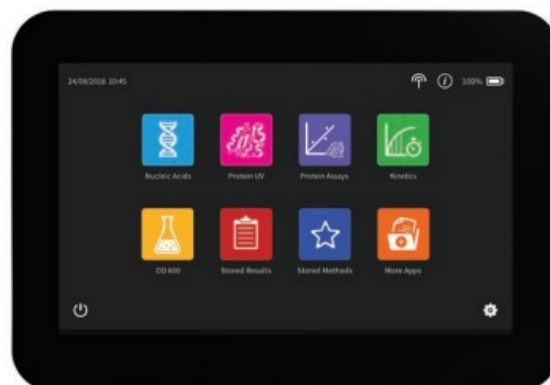
2. Power On



Accept EULA and select your country to activate the software

For units without touchscreen please proceed to 7 and 8a or 8b first to connect a control device

3. Select Method

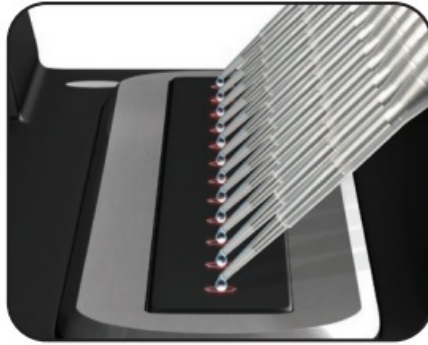
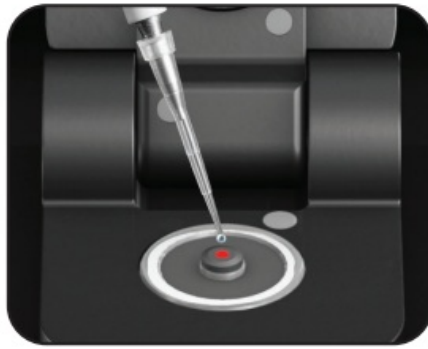


4. Mix Blank/Sample

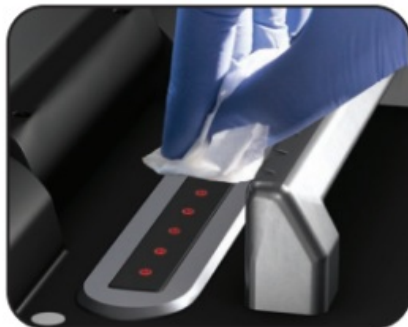


Vortex available on NP80/N60 only

5. Apply Blank / Sample



6. Clean with Lint-Free Tissue



7. Install Software/App



Windows/Mac software available on provided USB and free for download at www.implen.com

8. a Connect to Computer via USB Cable, Ethernet Cable, or Wi-Fi® Network Using

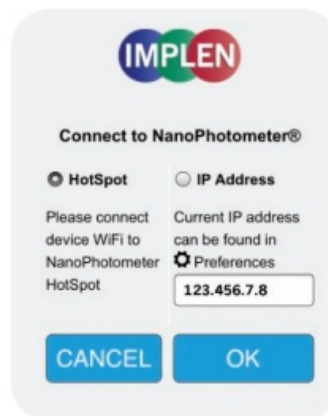
Desktop Software



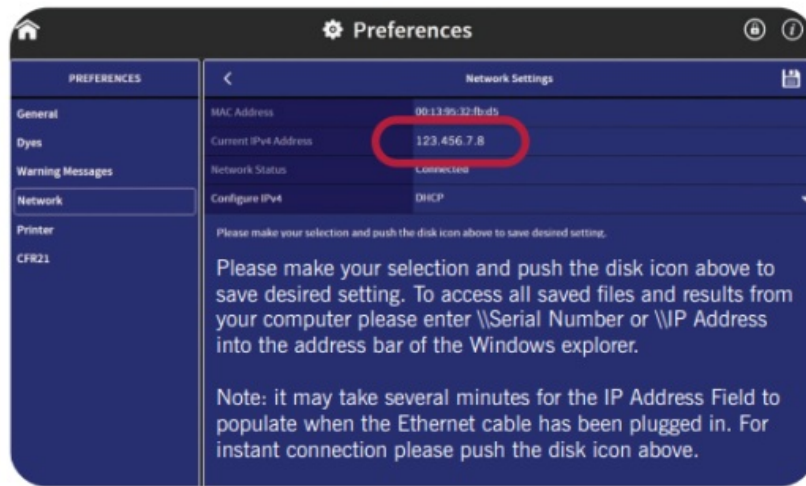
8b Connect to Tablet/Smartphone
















Switch Wi-Fi® on & connect SSID: Serial Number (e.g. M80900) Password: Implenuser








8c IP address can be found in preferences

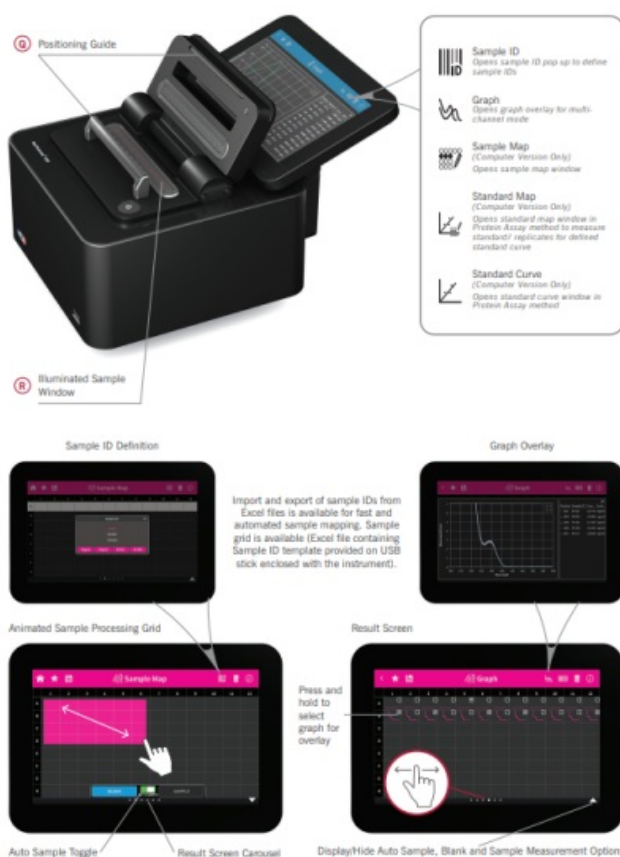


The Apple App Store Logo is property of Apple, Cupertino, CA, USA and Google Play is property of Google, Mountain View, CA, USA

Icon	
	Wi-Fi® Network
	Wi-Fi® Hotspot
	Assistance
	Battery Status
	Preferences
	Home Screen
	Leave Method
	Back
	Next/Confirm
	Delete
	Delete Data
	Print Data
	Save Data


	Add Folder
	Manage Data
	Store Method
	Full Scale
	Cancel

NanoPhotometer® N120 Additional Features



www.implen.de | www.implen.com

Documents / Resources

	IMPLEN N60 Nano Photometer [pdf] Instruction Manual NP80, N60, N50, N120, N60 Nano Photometer, N60, Nano Photometer, P hotometer
---	--

References

- [User Manual](#)

◆ IMPLN, N120, N50, N60, N60 Nano Photometer, Nano Photometer, NP80,

■ IMPLN Photometer

Leave a comment

Your email address will not be published. Required fields are marked *

Comment *

Name

Email

Website

☐ Save my name, email, and website in this browser for the next time I comment.

Post Comment

Search:

e.g. whirlpool wrf535swhz

Search

Manuals+ | Upload | Deep Search | Privacy Policy | @manuals.plus | YouTube

This website is an independent publication and is neither affiliated with nor endorsed by any of the trademark owners. The "Bluetooth®" word mark and logos

are registered trademarks owned by Bluetooth SIG, Inc. The "Wi-Fi®" word mark and logos are registered trademarks owned by the Wi-Fi Alliance. Any use of these marks on this website does not imply any affiliation with or endorsement.