



## imperii WiFi Smart Socket Product Manual

[Home](#) » [imperii electronics](#) » imperii WiFi Smart Socket Product Manual 

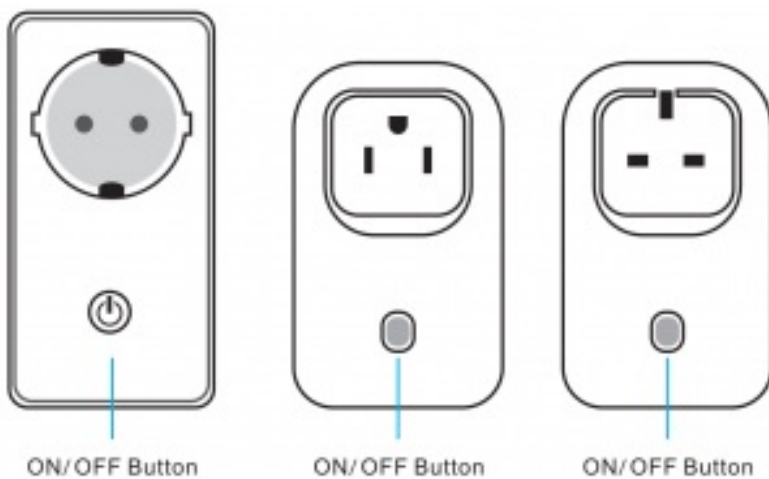
imperii WiFi Smart Socket Product



## Contents

- [1 Product Overview](#)
- [2 Product parameters](#)
- [3 Download method](#)
- [4 App Configuration](#)
- [5 Common Problems and Solutions](#)
- [6 Related Posts](#)

## Product Overview



## Product parameters

**VOLTAGE:** AC100- 240V Max load current: 10A

**Total load must not exceed :** 2200W

**Net work:** WIFI 2.4GHz b/g/n

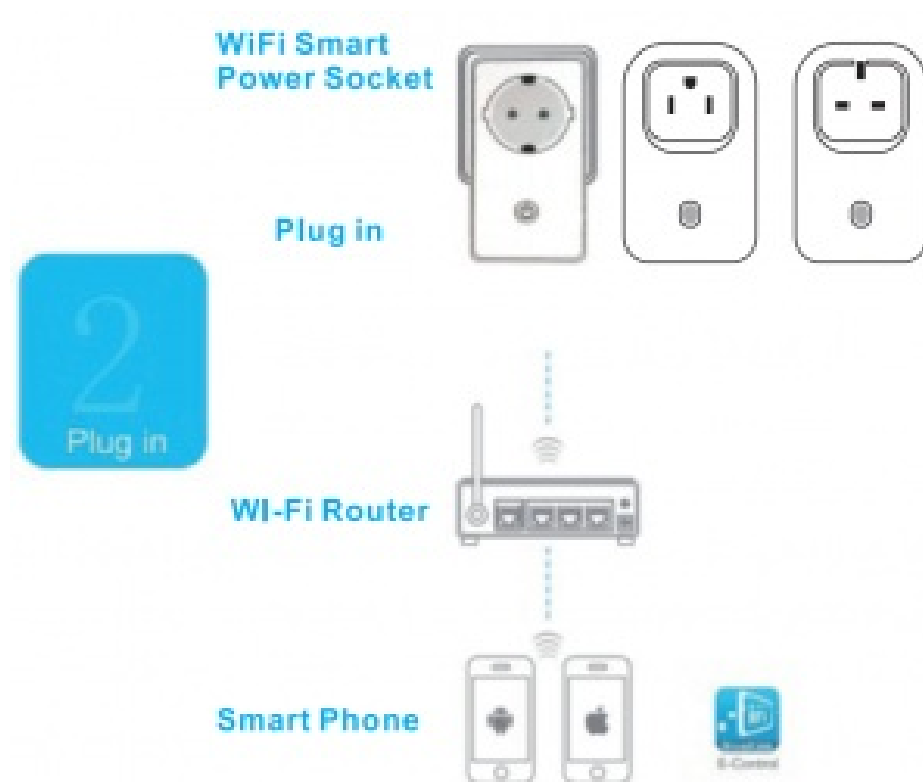
**Security:** WEPIWPA-PSK/WPA2-PSK

## Download method



**Step 1:** Download the free broad link app from the Apple App store or google play by searching for “e-Control”

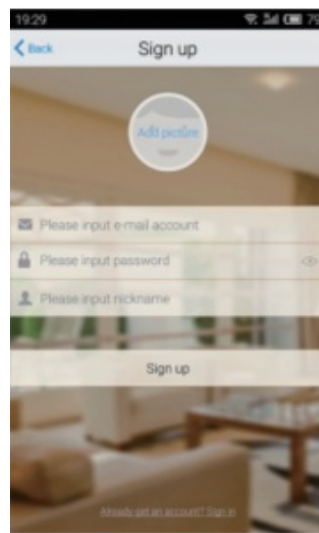
**Step 2:** Scan the QR Code from the packing box of the Z10 Download and install Z10APP



- Plug **Z10** power supply Into a power outlet.
- Before starting to setup the device. Make sure your iOS/Android smartphone is connected to your home WI-FI network

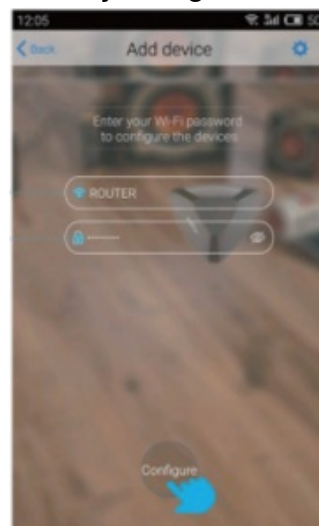
## App Configuration

Sign up ID



Open the E-Control, enter the registered mail, registered password, nickname. Click to register.

### A key configuration

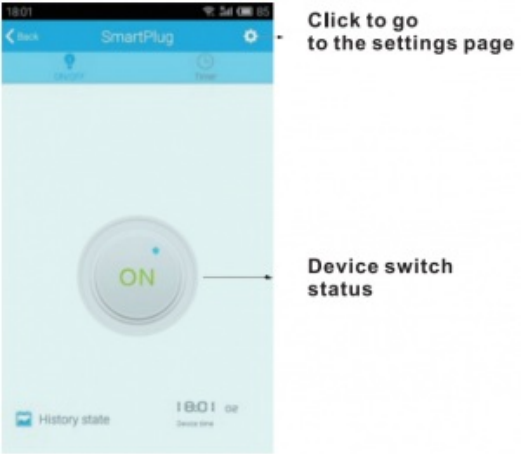


- Wi-Fi Phone location name
- Click Import WIFI password

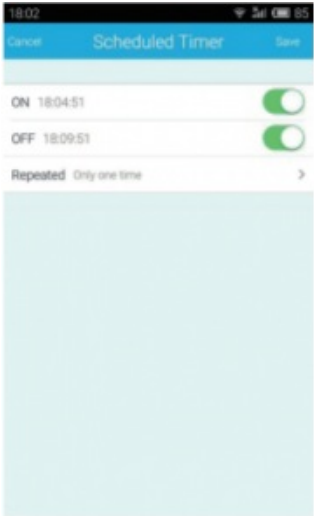
### Configuration success



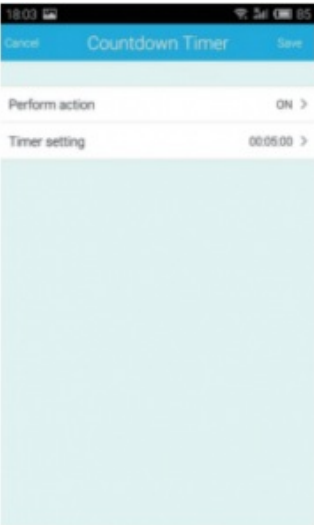
Function master interface device



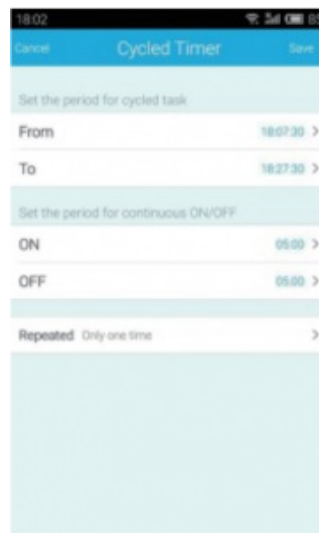
Set up Scheduled Timer



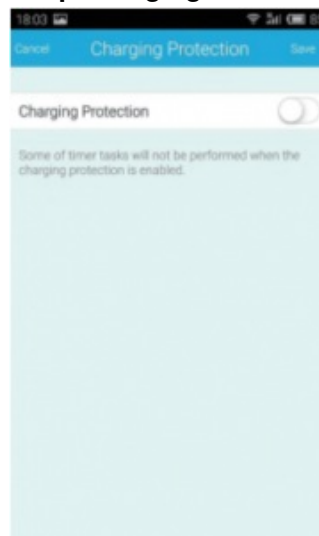
Set up Countdown Timer



Set up cycled timer



## Set up Charging Protection



## Common Problems and Solutions

### What does the device's Wi-Fi light indicate in different conditions?

- The Wi-Fi light flashes quickly, it indicates the original state(factory default), press the "Configuration" button in "Add device" to configure the device;
- If the Wi-Fi light flashes once a second after the configuration procedure is done. it indicates the configuration is failed, please configure it again after resetting.

### How to know if the configuration is successful?

- If the Wi-Fi light turns to go out from quick-flashing after the configuration, it indicates the configuration is successful.

### How to reset the device?

- Long press the on-off key till it flashes quickly. Long press

## Warm Prompt

- This device supports wireless network 2.4G only, 5G is not available.
- Please check the online direction to get more operation instructions.

**TECHNICAL SERVICE :** <http://imperiielectronics.com/index.php?controller=contact>



imperii WiFi Smart Socket Product Manual – [Download \[optimized\]](#)

imperii WiFi Smart Socket Product Manual – [Download](#)

imperii WiFi Smart Socket Product Manual – [OCR PDF](#)

Manuals+.