



IMOUS RC SR Security Camera User Guide

[Home](#) » [IMOUS](#) » IMOUS RC SR Security Camera User Guide 

Contents

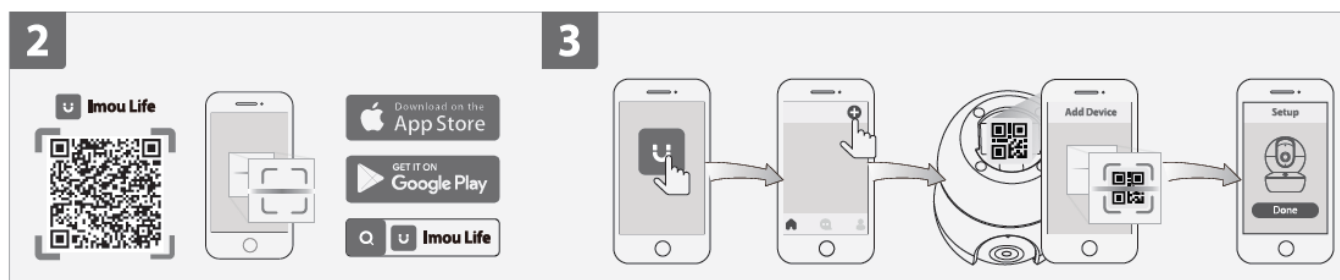
- [1 IMOUS RC SR Security Camera](#)
- [2 WHAT IN BOX](#)
- [3 Power On the Camera](#)
- [4 Get the Imou Life App](#)
- [5 Set Up the Camera](#)
- [6 Install the Camera](#)
- [7 LED Status](#)
- [8 Documents / Resources](#)
- [9 Related Posts](#)



IMOUS RC SR Security Camera

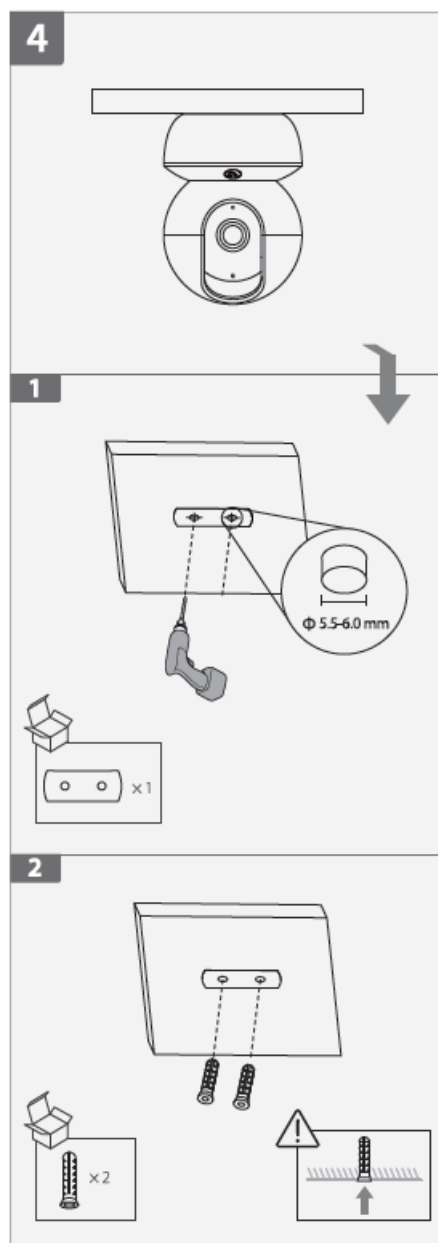
Connect the camera to power (see part 1).

Get the Imou Life App



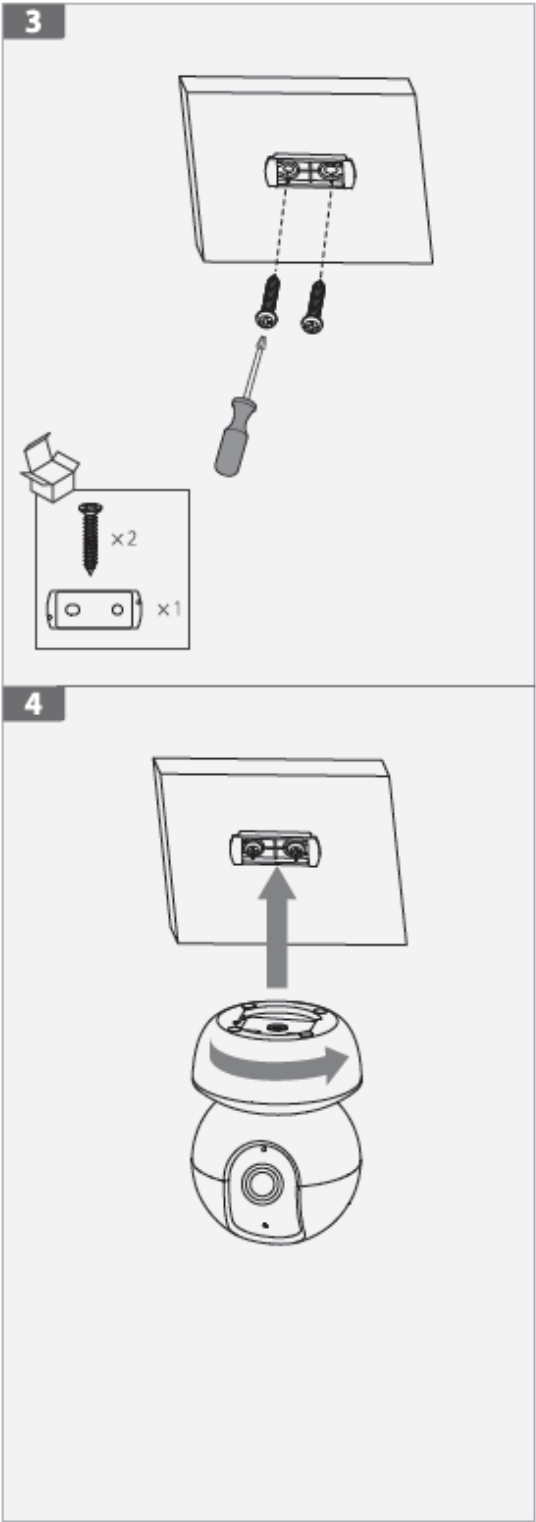
Scan the QR code on part 2 or search for “Imou Life” to download and install the app. Create an account and log in.

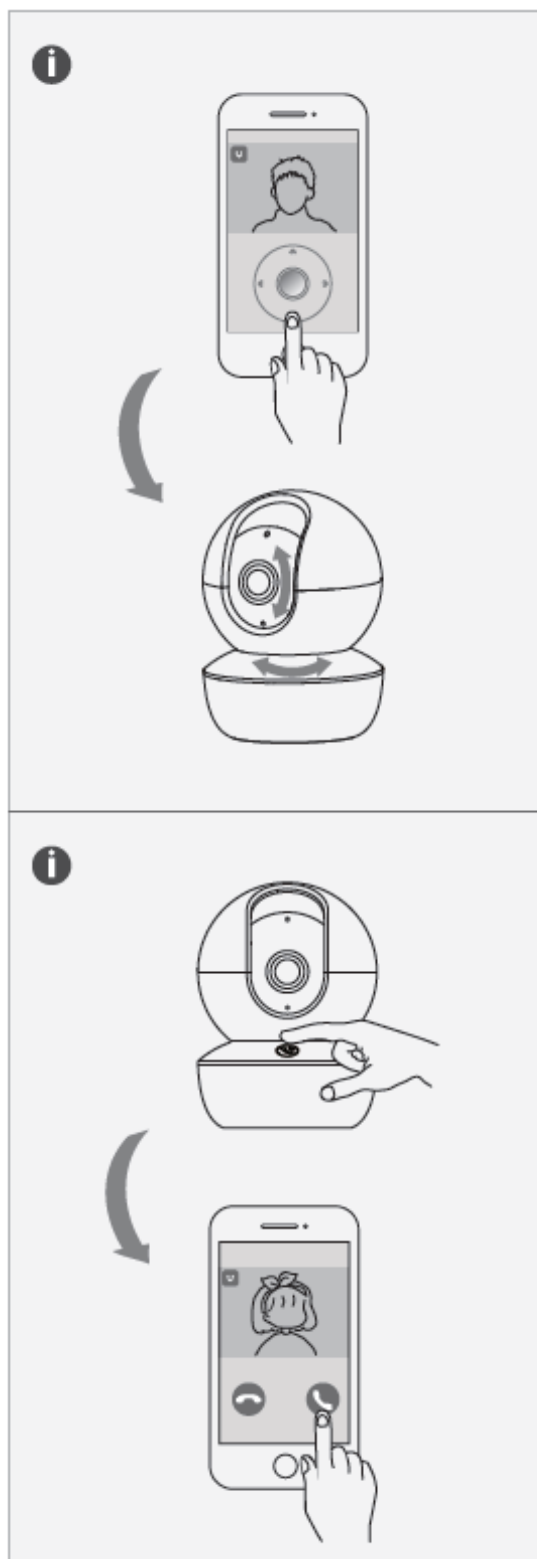
Set Up the Camera



Scan the QR code on the body of the device or on the cover of this guide with the app, and then follow on-screen instructions to complete the setup (see part 3).

Install the Camera





Make sure the mounting surface is strong enough to hold three times the weight of the camera. For a detailed installation process, please see part 4.

LED Status

Green	Flashing	Ready to set up the device
	Solid	Working properly
Red	Flashing	<u>Network disconnected</u> Failed to set up the device
	Solid	<u>Booting</u> Device malfunction
Green & Red	Alternating	Updating firmware
Off		<u>Power off</u> LED turned off

If you need to reset the camera, press and hold the reset button for 10s. The LED turns solid red when the camera is booting.

service.global@imoulife.com
<https://www.imoulife.com/support/faq>
<https://www.imoulife.com>

Documents / Resources

	IMOUS RC SR Security Camera [pdf] User Guide RC SR Security Camera, RC SR, Security Camera, Camera
---	---