



IMOUS IPC-A46LP Rex Security Camera Instructions

[Home](#) » [IMOUS](#) » IMOUS IPC-A46LP Rex Security Camera Instructions 

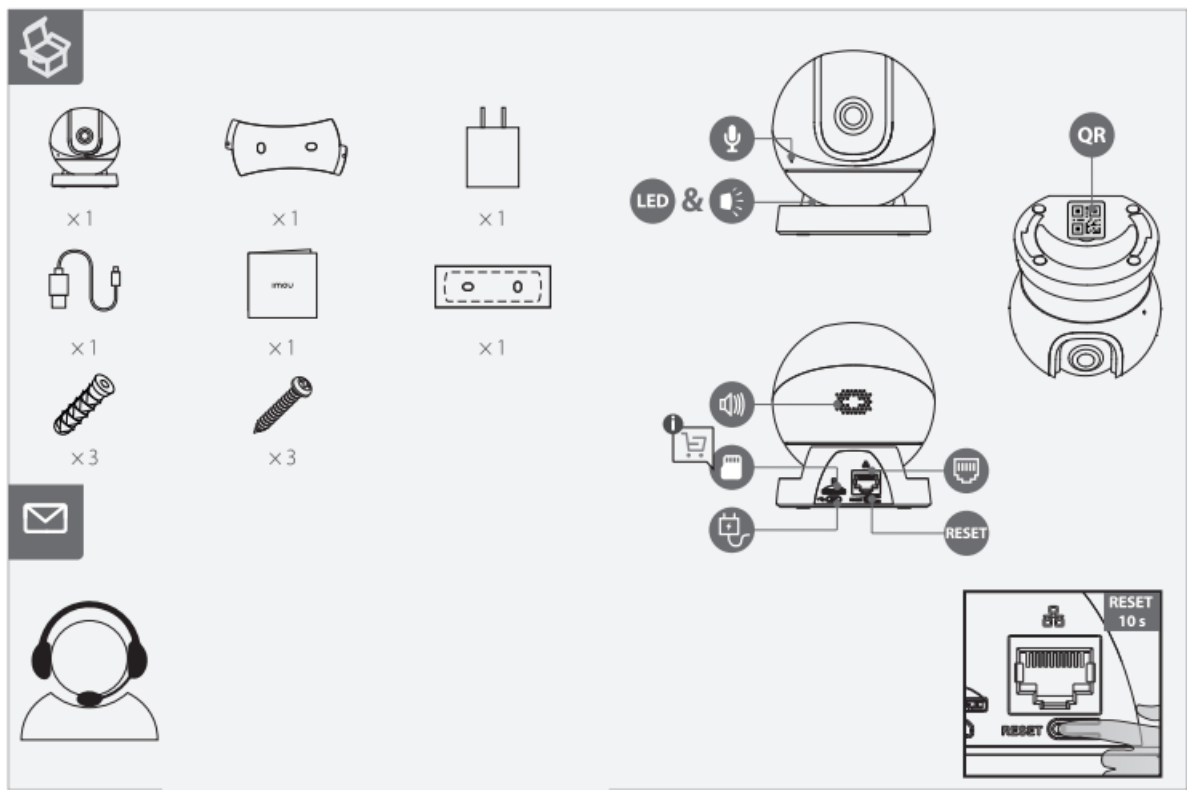
Contents

- [1 IMOUS IPC-A46LP Rex Security Camera](#)
- [2 Documents / Resources](#)
- [3 Related Posts](#)

Imou

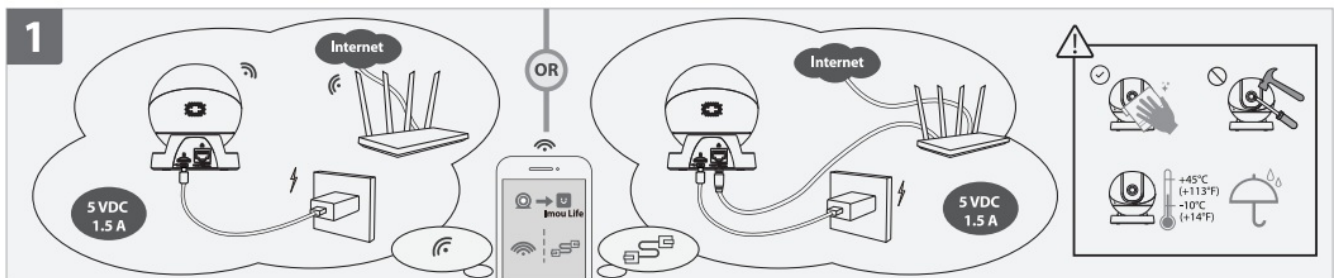
IMOUS IPC-A46LP Rex Security Camera



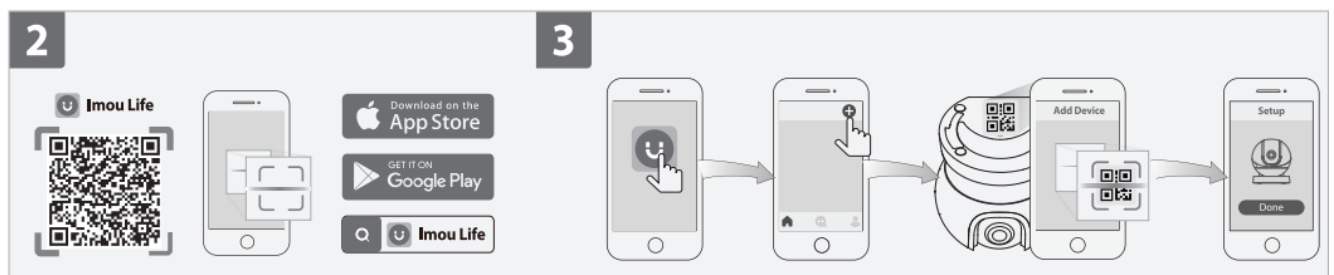


- service.global@imoulife.com
- <https://en.imoulife.com/support>
- [help/en.imoulife.com](http://en.imoulife.com)
- [@imougloba1](https://twitter.com/imougloba1)

1. Power On the Camera Connect the camera to power. You can choose wireless or wired network connection (see part 1).

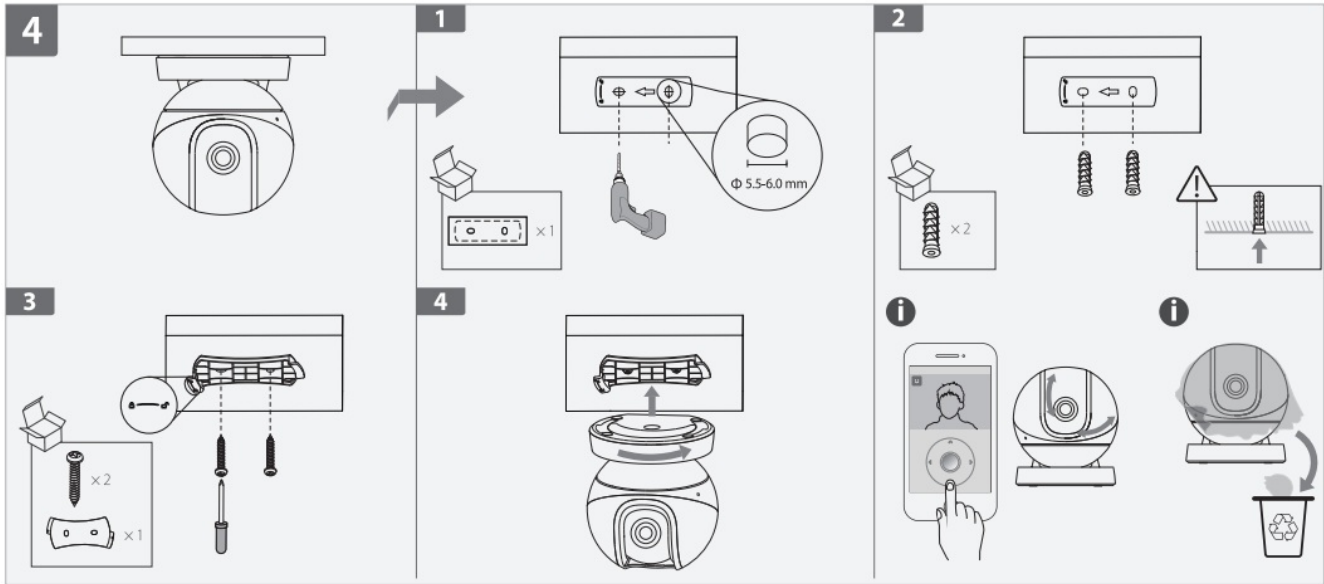


2. Get the Imou Life App Scan the QR code on part 2 or search for “Imou Life” to download and install the app. Create an account and log in.



3. Set Up the Camera Scan the QR code on the body of the device or on the cover of this guide with the app, and then follow on-screen instructions to complete the setup (see part 3).
4. Install the Camera Make sure the mounting surface is strong enough to hold three times the weight of the

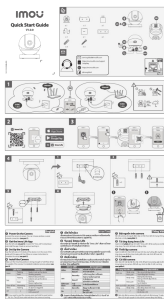
camera. For detailed installation process,



please see part 4.

LED Status		Device Status
Green	Flashing	Ready to set up the device
	Solid	Working properly
Red	Flashing	Network disconnected
		Failed to set up the device
	Solid	Booting
		Device malfunction
Green & Red	Alternating	Updating firmware
White	Flashing	An alarm is triggered
Off	/	Power off
		LED turned off

Documents / Resources



[IMOUS IPC-A46LP Rex Security Camera](#) [pdf] Instructions

IPC-A46LP Rex Security Camera, IPC-A46LP, Rex Security Camera, Security Camera, Camer
a

