



IMOUS Bullet 2E Wifi Security Camera User Guide

[Home](#) » [IMOUS](#) » IMOUS Bullet 2E Wifi Security Camera User Guide 

Contents

- [1 IMOUS Bullet 2E Wifi Security Camera](#)
- [2 Content](#)
- [3 Power On the Camera](#)
- [4 Get the Imou Life App](#)
- [5 Set Up the Camera](#)
- [6 Install the Camera](#)
- [7 Documents / Resources](#)
- [8 Related Posts](#)

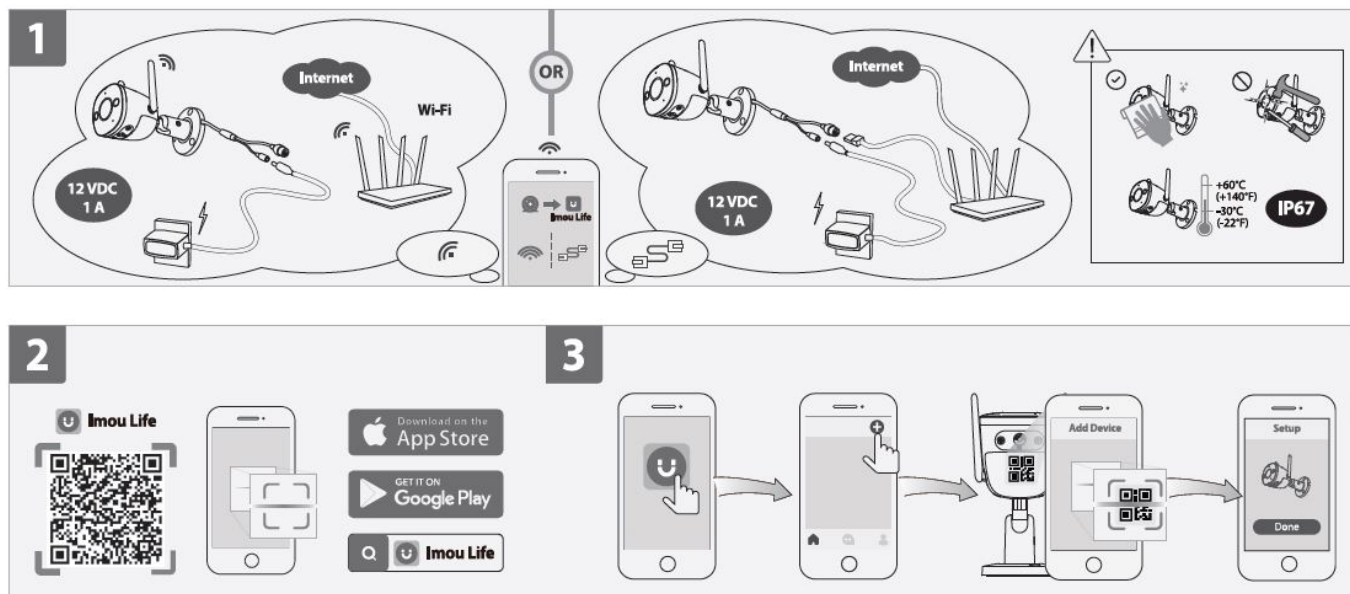
imou

IMOUS Bullet 2E Wifi Security Camera

Scan the QR code on part 2 or search for “Imou Life” to download and install the app. Create an account and log in.

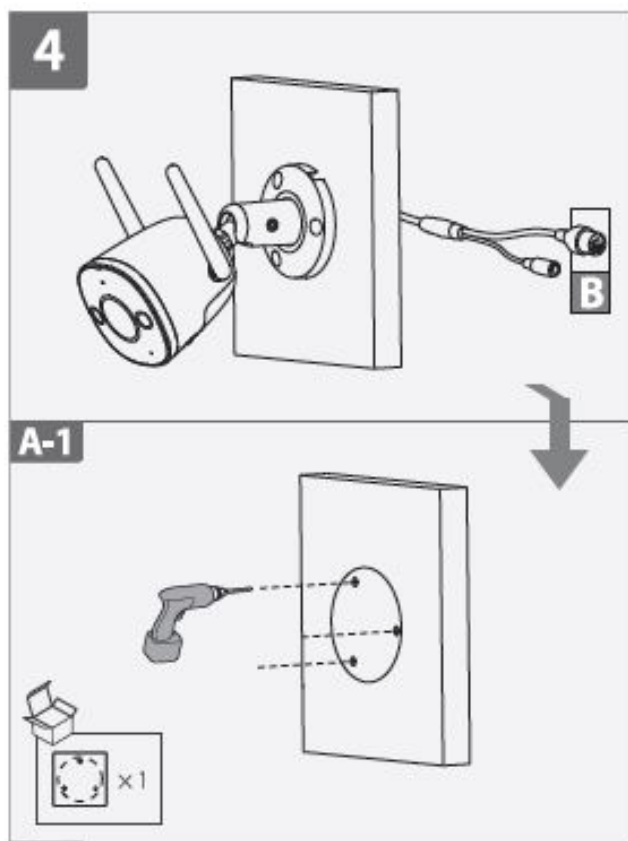
Set Up the Camera

Scan the QR code on the body of the device or on the cover of this guide with the app, and then follow on-screen instructions to complete the setup (see part 3).

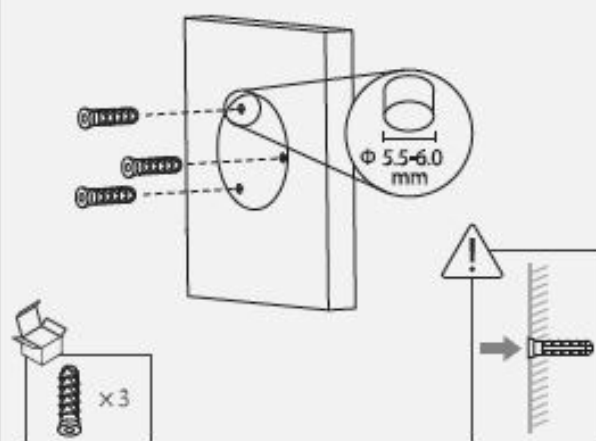


Install the Camera

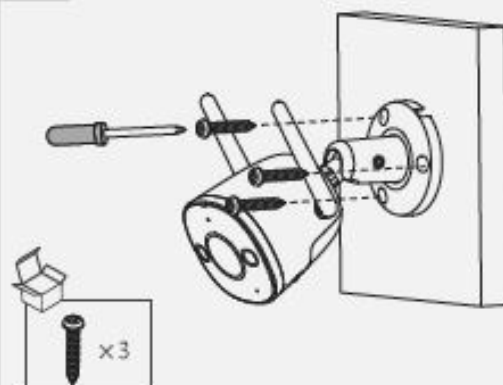
Make sure the mounting surface is strong enough to hold three times the weight of the camera. For detailed installation process, please see part 4.



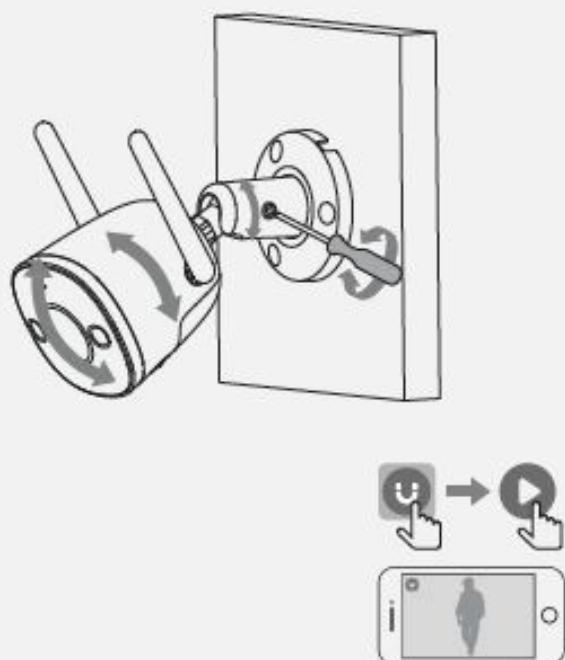
A-2

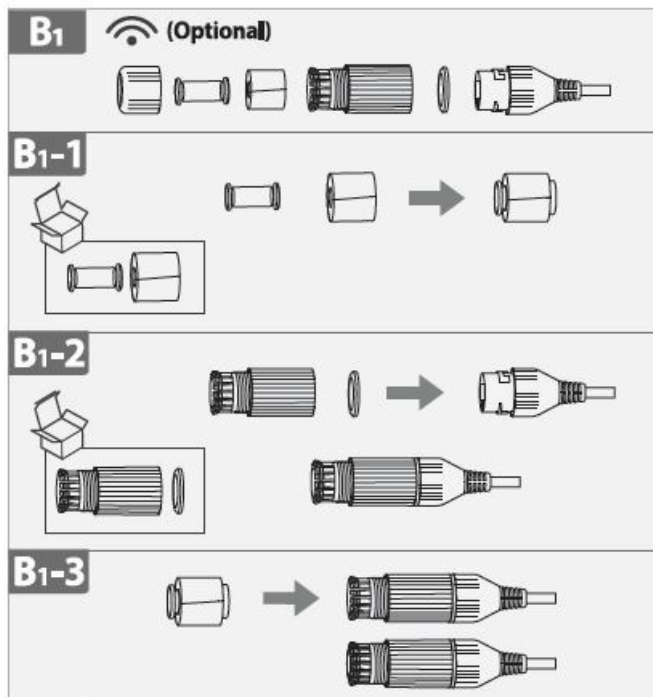
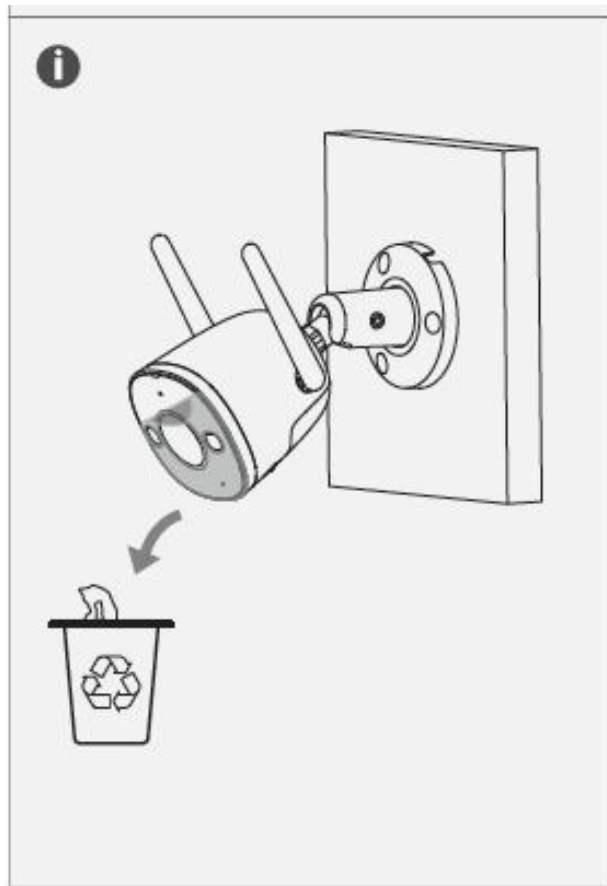


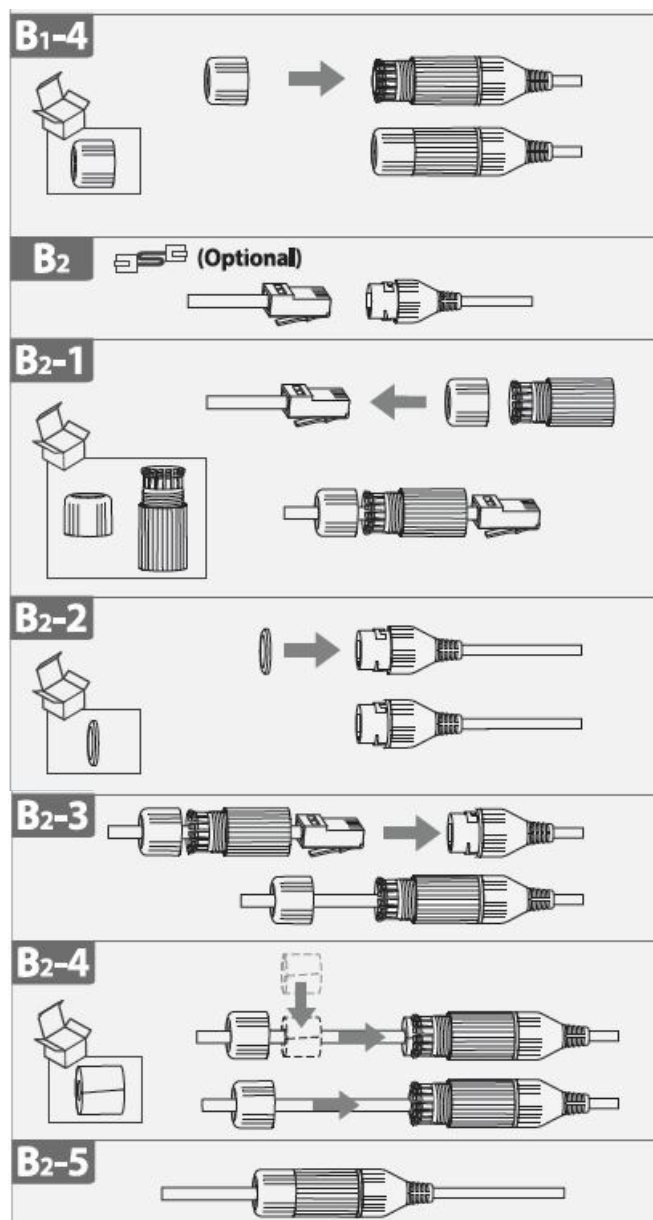
A-3



i



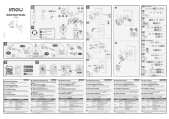




LED Status		Device Status
Green	Flashing	Ready to set up the device
	Solid	Working properly
Red	Flashing	Network disconnected
		Failed to set up the device
	Solid	Booting
		Device malfunction
Green & Red	Alternating	Updating firmware
Off	/	Power off
		LED turned off

- If you need to reset the camera, press and hold the reset button for 10 s. The LED turns solid red when the camera is booting.

Documents / Resources



[IMOUS Bullet 2E Wifi Security Camera](#) [pdf] User Guide

Bullet 2E Wifi Security Camera, Bullet 2E, Wifi Security Camera, Security Camera, Camera