




IMOUS Bullet 2E Security Camera User Guide

[Home](#) » [IMOUS](#) » IMOUS Bullet 2E Security Camera User Guide 



Quick Start Guide
V1.0.0

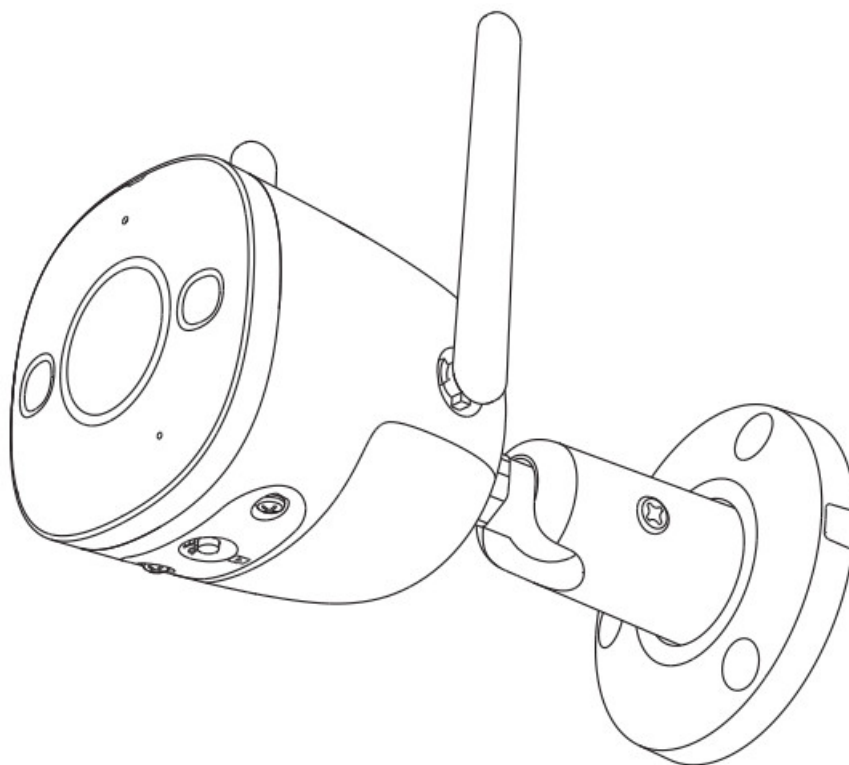
Contents

[1 Bullet 2E Security Camera](#)

[2 Documents / Resources](#)

[2.1 References](#)

Bullet 2E Security Camera



x1



x1



x3



x1



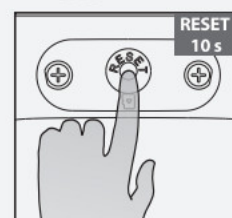
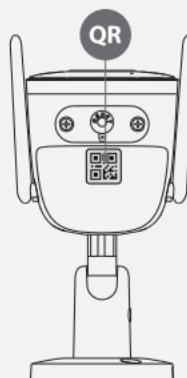
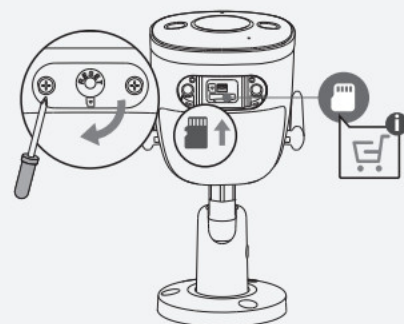
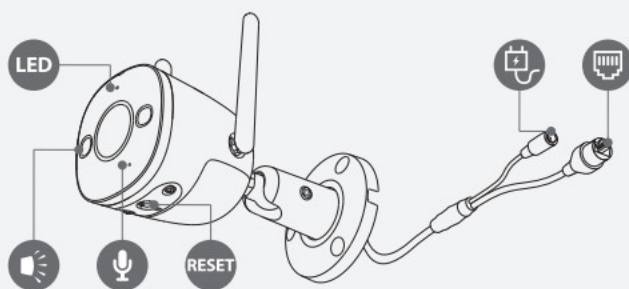
x1




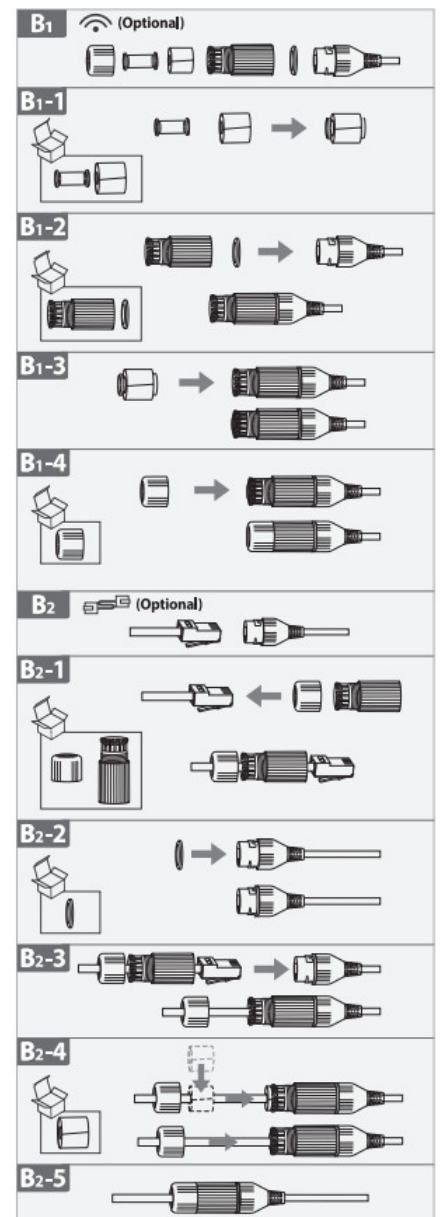
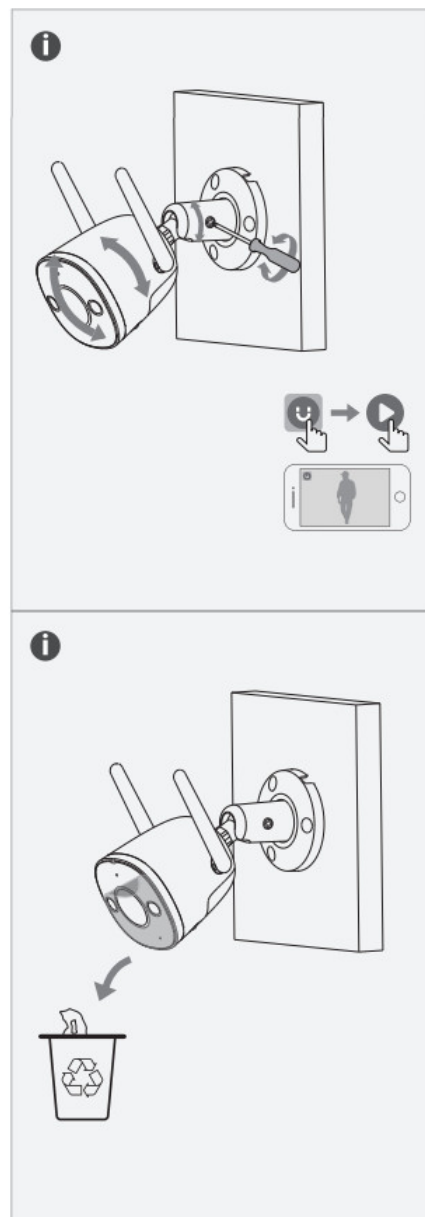
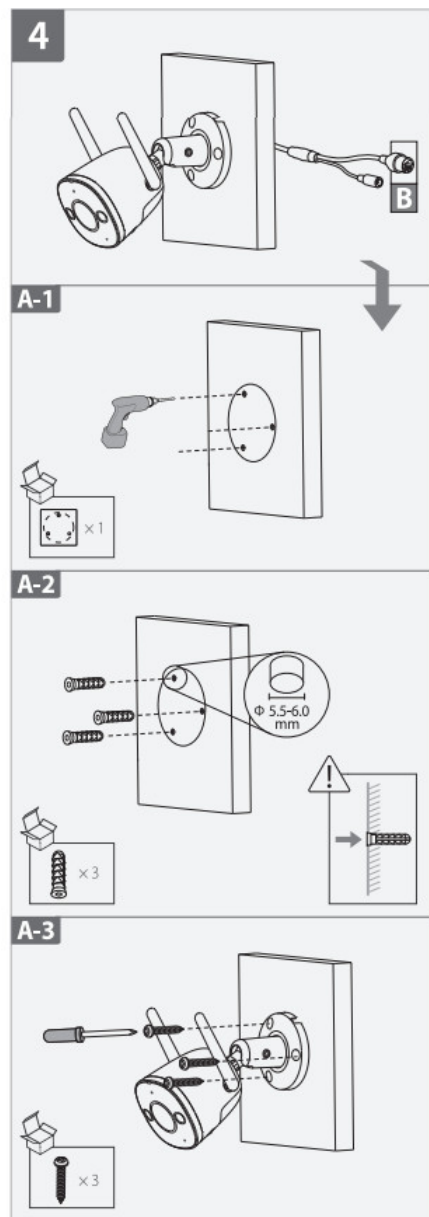
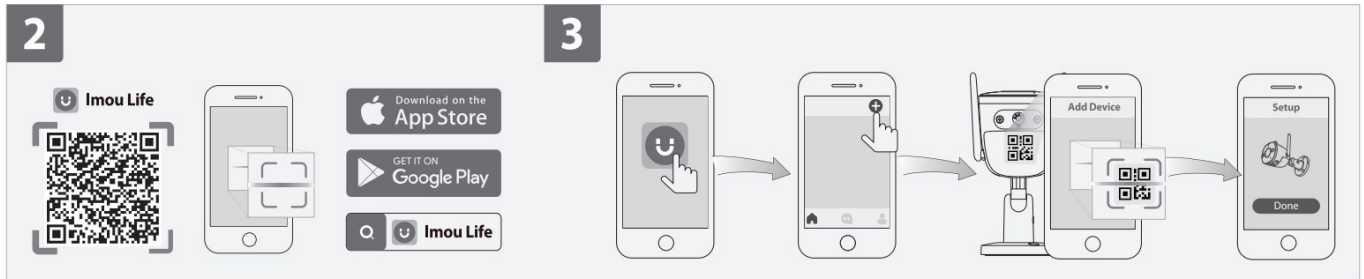
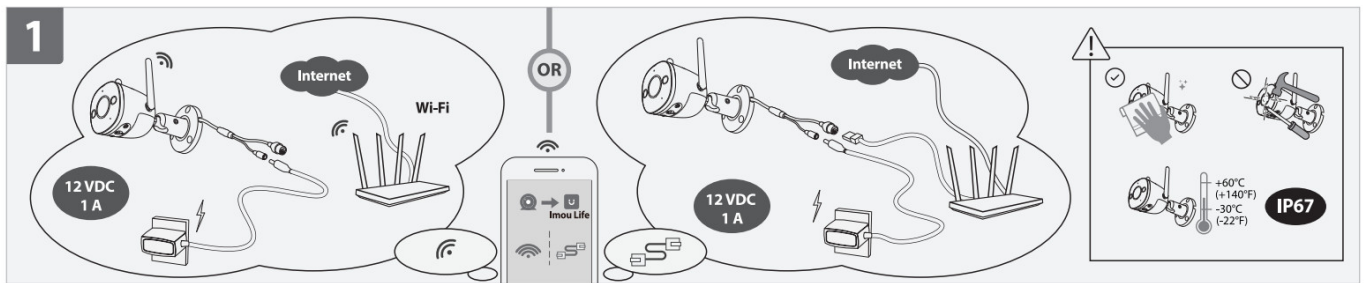
x1



x3



 service.global@imoulife.com
 <https://en.imoulife.com/support/help/faq>
 <https://en.imoulife.com>
 @imouglobal



1. Power On the Camera

Connect the camera to power. You can choose wireless or wired network connection (see part 1).

2. Get the Imou Life App

Scan the QR code on part 2 or search for "Imou Life" to download and install the app. Create an account and

log in.

3. Set Up the Camera

Scan the QR code on the body of the device or on the cover of this guide with the app, and then follow on-screen instructions to complete the setup (see part 3).

4. Install the Camera

Make sure the mounting surface is strong enough to hold three times the weight of the camera. For detailed installation process, please see part 4.


LED Status		Device Status
Green	Flashing	Ready to set up the device
	Solid	Working properly
Red	Flashing	Network disconnected
		Failed to set up the device
	Solid	Booting
		Device malfunction
Green & Red	Alternating	Updating firmware
Off	/	Power off
		LED turned off

i If you need to reset the camera, press and hold the reset button for 10 s. The LED turns solid red when the camera is booting.

 service.global@imoulife.com

 <https://en.imoulife.com/support/help/faq>

 <https://en.imoulife.com>

 @imouglobal

Documents / Resources

	IMOUS Bullet 2E Security Camera [pdf] User Guide Bullet 2E Security Camera, Bullet 2E, Security Camera, Camera
---	---

References

- [User Manual](#)

Manuals+.