



IMOU TA42 Network Camera User Guide

[Home](#) » [imou](#) » IMOU TA42 Network Camera User Guide 

Contents

- [1 IMOU TA42 Network Camera](#)
- [2 Foreword](#)
- [3 Important Safeguards and Warnings](#)
- [4 Operation and Daily Maintenance](#)
- [5 Package Content](#)
- [6 Camera Introduction](#)
- [7 App Operation](#)
- [8 Installing Camera](#)
- [9 FAQ](#)
- [10 Documents / Resources](#)
- [11 Related Posts](#)



IMOU TA42 Network Camera



Foreword

General

This manual introduces the functions, installation and operations of the camera.

Safety Instructions

The following categorized signal words with defined meaning might appear in the manual.

Signal Words	Meaning
.&WARNING	Indicates a medium or low potential hazard which, if not avoided, could result in slight or moderate injury.
.&CAUTION	Indicates a potential risk which, if not avoided, could result in property damage, data loss, lower performance, or unpredictable result.
(!JJNOTE	Provides additional information as the emphasis and supplement to the text.

About the Manual

- The manual is for reference only. If there is inconsistency between the manual and the actual product, the

actual product shall prevail.

- We are not liable for any loss caused by the operations that do not comply with the manual.
- The manual would be updated according to the latest laws and regulations of related jurisdictions. For detailed information, refer to the paper manual, CD-ROM, QR code or our official website. If there is inconsistency between paper manual and the electronic version, the electronic version shall prevail.
- All the designs and software are subject to change without prior written notice. The product updates might cause some differences between the actual product and the manual. Please contact the customer service for the latest program and supplementary documentation.
- There still might be deviation in technical data, functions and operations description, or errors in print. If there is any doubt or dispute, we reserve the right of final explanation.
- Upgrade the reader software or try other mainstream reader software if the manual (in PDF format) cannot be opened.
- All trademarks, registered trademarks and the company names in the manual are the properties of their respective owners. Please visit our website, contact the supplier or customer service if there is any problem occurring when using the device.
- If there is any uncertainty or controversy, we reserve the right of final explanation.

Important Safeguards and Warnings

Electrical Safety

- All installation and operation must conform to your local electrical safety codes.
- Ensure power conforms to the Safety Extra Low Voltage (SELV), and that the rated voltage meets limited power source standards as specified in IEC60950-1. Note that the power supply requirement is subject to the device label.
- Make sure that the power supply is correct before operating the device.
- Please install easy-to-use device for power off before installing wiring, which is for emergent power off when necessary.
- Prevent the power cable from being trampled or pressed, especially the plug, power socket and the junction extruded from the device.

Environment

- Do not aim the device at an intense radiation source, such as lamp light and sun light; otherwise it might cause over brightness or light marks, and affect the service life of Complementary Metal-Oxide Semiconductor (CMOS).
- Do not place the device in a wet, dusty, extremely hot or cold environment, and avoid places with strong electromagnetic radiation or unstable lighting.
- Keep the device away from any liquid to avoid damage to the internal components.
- Keep the indoor device away from rain or damp to avoid fire or lightning.
- Install the device in a well-ventilated place and do not block the ventilation of the device.
- Transport, use and store the device under the allowed humidity and temperature.
- Heavy stress, violent vibration or water splash are not allowed during transportation, storage and installation.
- Use the factory default package or material with equal quality to pack the device when transporting .

- Install the device in the location where only the professional staff with relevant knowledge of safety guards and warnings can access.
-

Operation and Daily Maintenance

- Do not touch the heat dissipation component of the device to avoid scald.
- Do not open or dismantle the device; there are no components that a user can fix or replace.
- Opening the unit may cause water leakage or expose components to direct light. Contact the manufacturer or a qualified service representative to service the device or to replace a component, including the desiccant. (Not all models are provided with the desiccant).
- It is recommended to use the device together with lightning arrester to improve lightning protection effect.
- It is recommended to ground the device to enhance reliability.
- Do not touch the CCD or the CMOS optic sensor. Use a blower to clean dust or dirt on the lens surface. Use a dry cloth dampened with alcohol and gently wipe away any dust on the lens.
- You can clean the device body with soft dry cloth, and for stubborn stains, use the cloth with mild detergent. To avoid possible damage on device body coating which could cause performance decrease, do not use volatile solvent such as alcohol, benzene, diluent and so on to clean the device body, nor can strong, abrasive detergent be used.
- Dome cover is an optical component. Do not touch or wipe the cover with your hands directly during installation or operation. For removing dust, grease or fingerprints, wipe gently with moistened oil-free cotton with diethyl or moisten soft cloth. You can also remove dust with an air blower.

WARNING

- Strengthen the protection of network, device data and personal information by adopting measures which include but not limited to using strong password, changing password regularly, updating firmware to the latest version, and isolating computer network. For some device with old firmware versions, the ONVIF password will not be modified automatically along with the modification of the system password, and you need to upgrade the firmware or manually update the ONVIF password.
- Use standard components or accessories provided by manufacturer and make sure that the device is installed and maintained by professional engineers.
- The surface of the image sensor should not be exposed to laser beam radiation.
- Do not provide two or more power supply sources for the device unless otherwise specified. A failure to follow this instruction might cause damage to the device.

Package Content

- Unpack the box and check if all the components are included before installation.
- Contact your local retailer if anything is broken in your package.



Camera ×1



Positioning Map ×1



Mounting Plate ×1



Screw Package ×1



QSG ×1



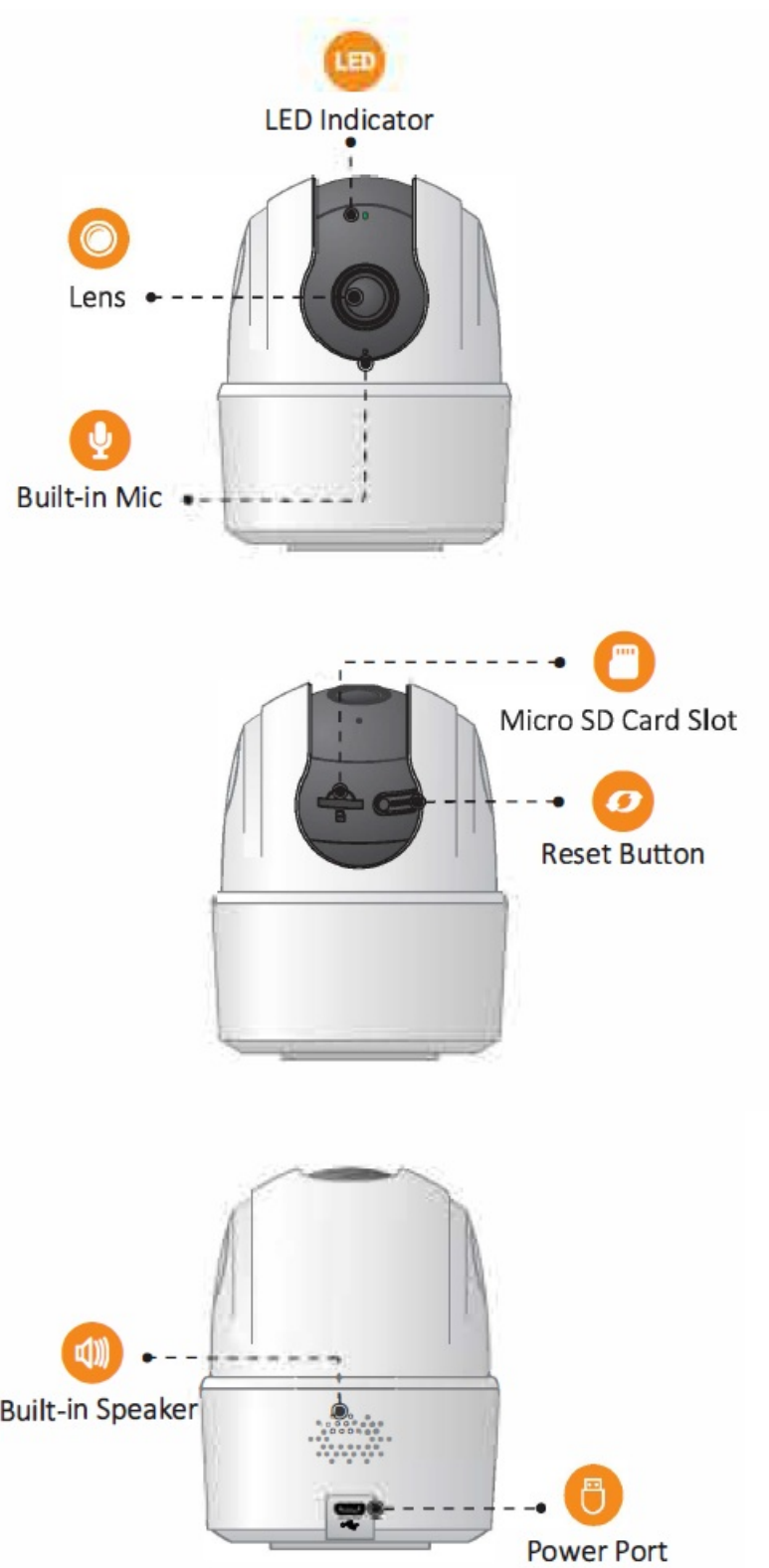
Power Adapter ×1



Power Cable ×1

Camera Introduction

To reset the device, press and hold the reset button for 10 s. See the table below for definitions of camera's LED behaviors.



LED Status	Device Status
Off	<ul style="list-style-type: none"> Powered off/LED turned off Rebooting after reset
Solid red	<ul style="list-style-type: none"> Booting Device malfunction
Flashing red	Network connection failed
Flashing green	Waiting for network
Solid green	Operating properly
Flashing green and red alternately	Firmware updating

App Operation

1. Follow the steps below to add the camera to your Imou account.

Step 1 Scan the following QR code or search “Imou Life” in Google Play or App Store to download and install the app.

If you have installed the app, update it to the latest version.

2. Step 2 Run the Imou Life App, and then create an account for the first use.

3. Step 3 Connect the camera to power source with the power adapter.

4. Step 4 Wait for booting to be finished, and then the camera indicator flashes green.

5. Step 5 Do the following operations to finish adding the camera.

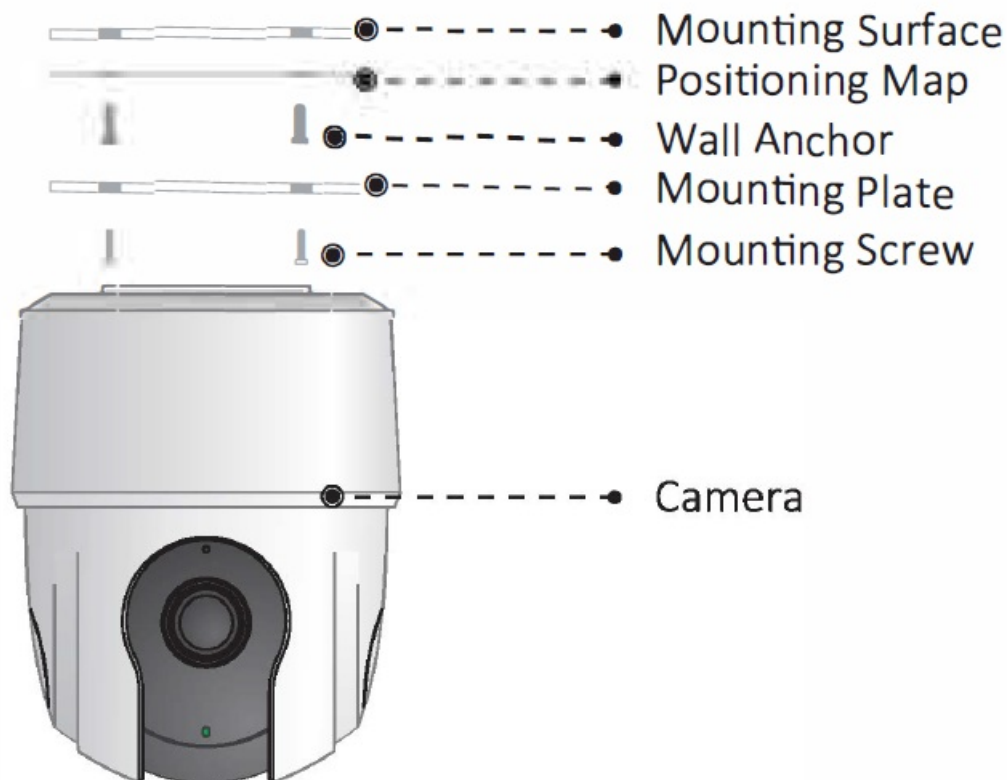


- If you have more than one device, do step 5 to add them one by one.
- If the Wi-Fi network has changed or the indicator status goes wrong, reset the camera, and then do step 5 to add it again.

Installing Camera

Make sure that the mounting surface is smooth and strong enough to hold at least three times of the device weight.

1. Step 1 Drill screw holes on the mounting surface as the positioning map shows, and then put in the wall anchors.
2. Step 2 Attach the mounting plate to the mounting surface with the mounting screws.
3. Step 3 Attach the camera to the mounting plate, power it up, and then adjust the lens to the ideal angle.



FAQ

- **Q:** The device cannot work normally or start?

Check the LED indicator status. If the light is not in green, press and hold the reset button for 10 s to reset the camera.

- **Q:** How to connect the camera to a new Wi-Fi?

- If the camera is on line, select Device Details> Network Conffg to change the Wi-Fi connection on the app.
- If the camera is offline, reset the camera, and then configure the camera again.

- **Q:** Connection is overtime?

Be sure that the LED indicator is flashing green before you configure network for the device.

- Check if the distance between the camera and the router, and that between the camera and the smart phone is both within 5 m (16.4 ft) during the connection.
- The camera supports 2.4 GHz only. Make sure that your phone is connected to 2.4GHz Wi-Fi.
- Check the Wi-Fi configuration of the router: Select the channel to auto, and the mode to llbgn mixed.

- **Q:** When the Micro SD card is full, how is the recorded video saved?

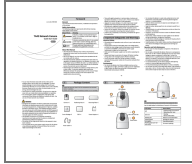
When the Micro SD card is full, the system will overwrite the previous recorded videos. Save the important information in time.

- **Q:** The device is offline?

Check the indicator status:

- On solid green: Check whether the router can connect to the Internet. If Internet is working, restart the camera.
- Flashing red: Reset the camera, and then configure the camera again.
- On solid red: The camera is faulty.

Documents / Resources



[IMOU TA42 Network Camera](#) [pdf] User Guide
IPC-TA4X, IPCTA4X, 2AVYF-IPC-TA4X, 2AVYFIPCTA4X, TA42 Network Camera, TA42,
Network Camera