

imou
QSG Cell Go
Security Camera



Imou QSG Cell Go Security Camera User Guide

[Home](#) » [imou](#) » Imou QSG Cell Go Security Camera User Guide 

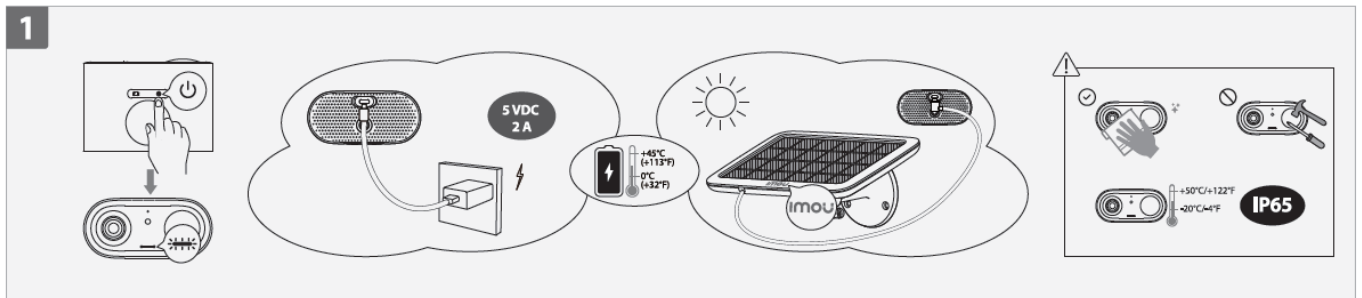
Contents

- [1 Imou QSG Cell Go Security Camera](#)
- [2 What In The Box](#)
- [3 Power On the Camera](#)
- [4 Get the Imou Life App](#)
- [5 Set Up the Camera](#)
- [6 Install the Camera](#)
- [7 CONTACT](#)
- [8 Documents / Resources](#)
 - [8.1 References](#)
- [9 Related Posts](#)

imou

Imou QSG Cell Go Security Camera

- Please charge it with a 5VDC 2A power adapter or a solar panel (each sold separately).



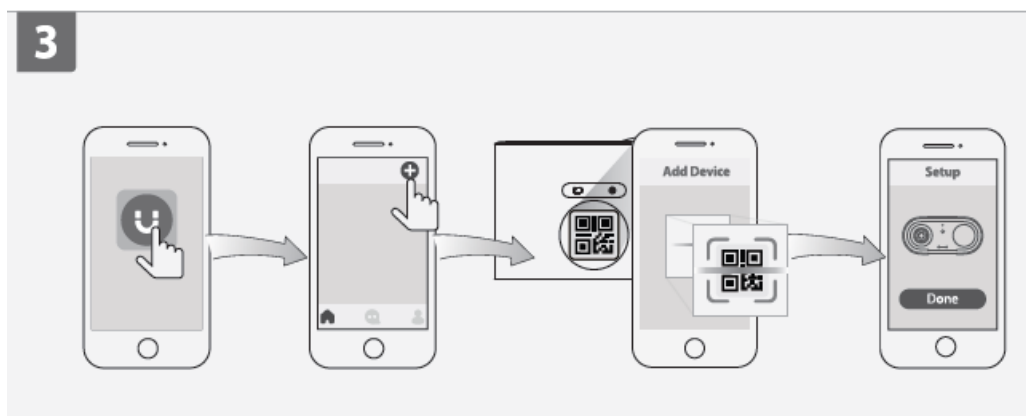
Get the Imou Life App

- Scan the QR code on part 2 or search for “Imou Life” to download and install the app.
- Create an account and log in.



Set Up the Camera

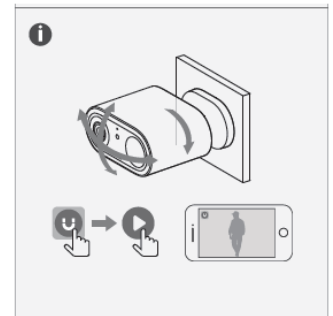
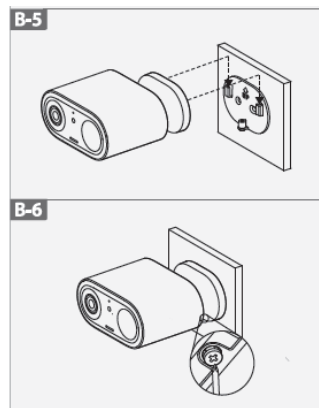
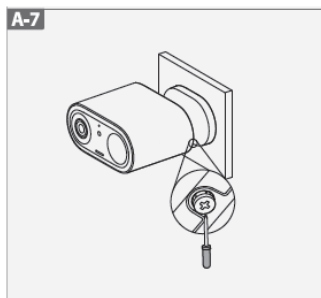
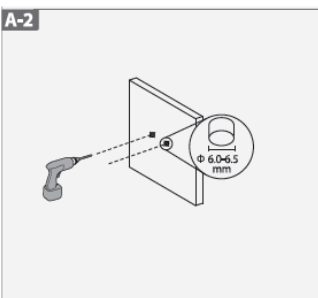
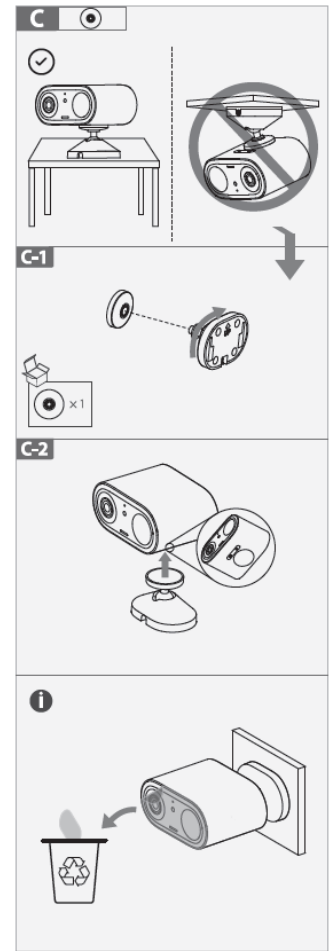
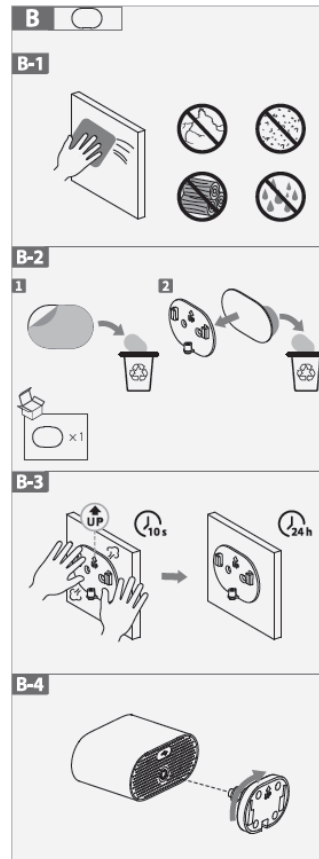
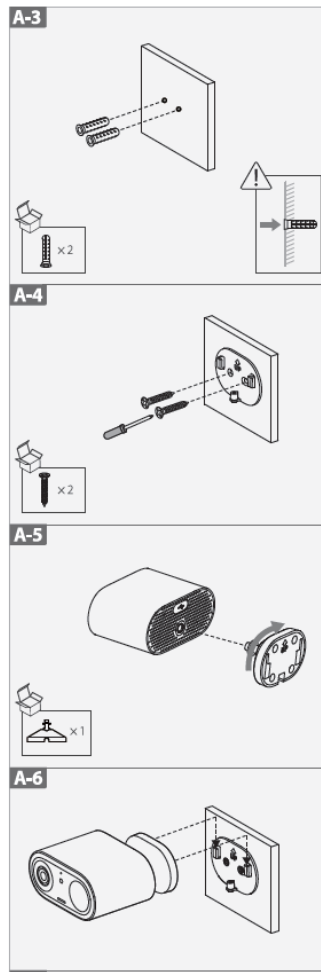
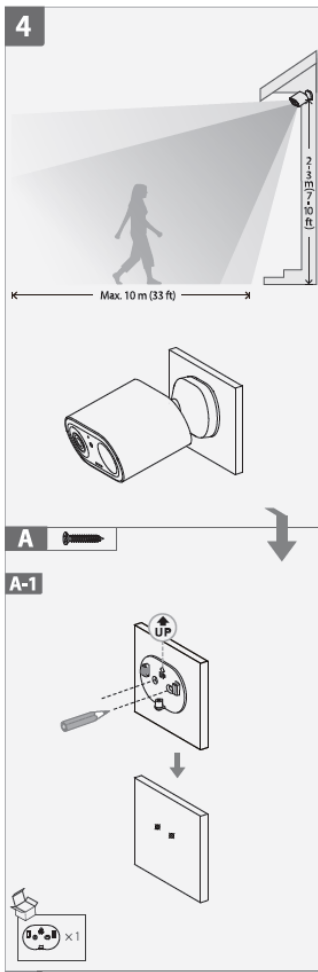
- Scan the QR code on the body of the device or on the cover of this guide with the app, and then follow on-screen instructions to complete the setup.



Install the Camera

- Fully charge the camera before installation.

- Make sure the mounting surface is strong enough to hold three times the weight of the camera.



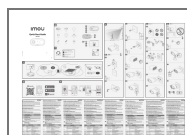
Button	Description
	Power on/off the camera Press and hold  .
	Enter/exit AP mode Double press  . The LED slowly blinks blue & red in AP mode.
	Enter/exit Vlog mode Press  . The LED slowly blinks blue & red in Vlog mode and the camera starts recording continuously.  Please add the camera to Imou Life APP first.
	Reset the camera Press and hold  for 5 s.

LED Status		Device Status
Blue	Flashing slowly	Charging
	Solid	Fully charged
Green	Flashing slowly	Ready to set up the device
	Flashing fast	Connecting to the router
	Solid	Booting
		Working properly
Red	Flashing slowly	Disconnected from the router
	Solid	Device malfunction
Red & Blue	Alternating	In VLOG mode
		Device hotspot turned on
Red & Green	Alternating	Updating firmware (keep battery enough)

CONTACT

- service.global@imoulife.com
- <https://en.imoulife.com/support/help/faq>
- <https://en.imoulife.com>
- @imouglobal

Documents / Resources



[Imou QSG Cell Go Security Camera](#) [pdf] User Guide
1.2.51.32.21039-000, QSG Cell Go Security Camera, QSG, Cell Go Security Camera, Go Security Camera, Security Camera, Camera

References

- [User Manual](#)

[Manuals+](#), [Privacy Policy](#)

This website is an independent publication and is neither affiliated with nor endorsed by any of the trademark owners. The "Bluetooth®" word mark and logos are registered trademarks owned by Bluetooth SIG, Inc. The "Wi-Fi®" word mark and logos are registered trademarks owned by the Wi-Fi Alliance. Any use of these marks on this website does not imply any affiliation with or endorsement.