

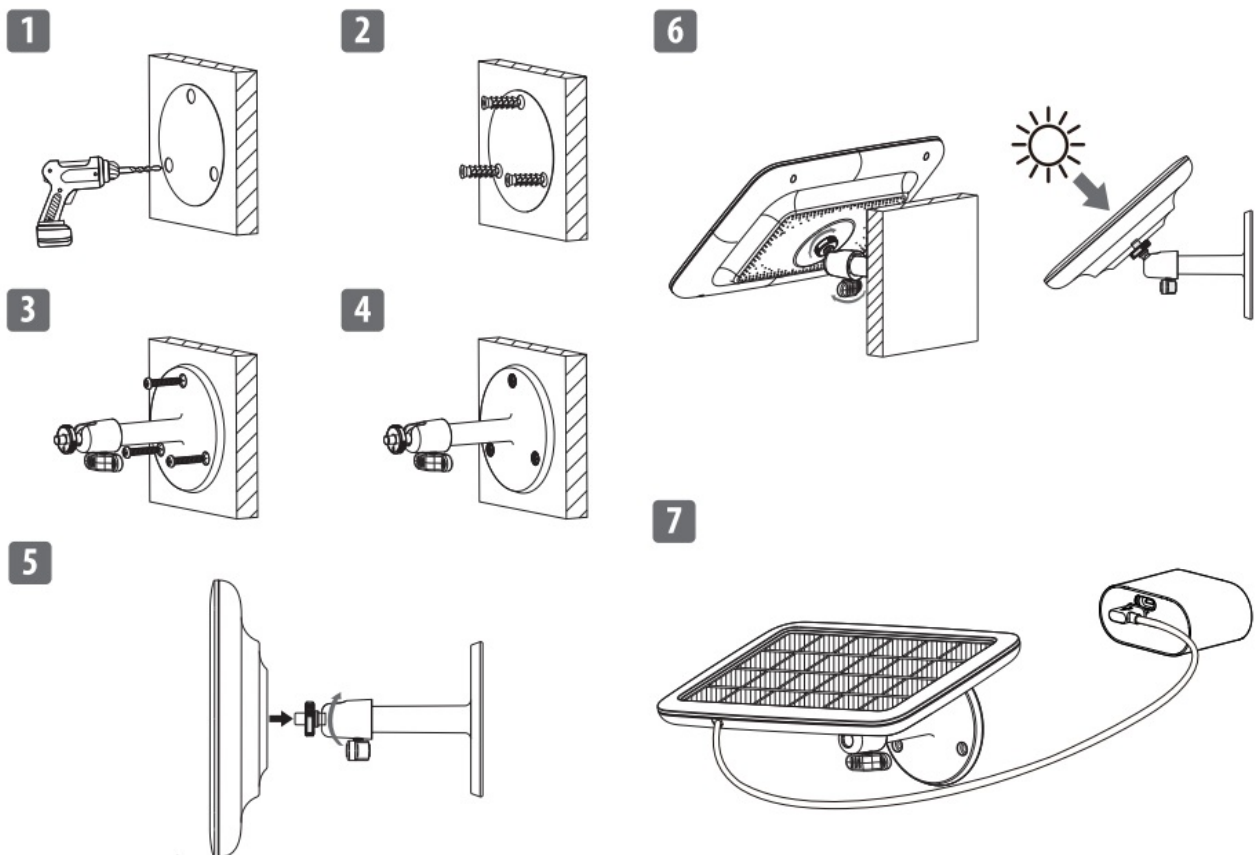


Imou KIT-IPC-B32P-FSP12 Cell Go Kit IP CCTV Camera Set User Guide

[Home](#) » [imou](#) » Imou KIT-IPC-B32P-FSP12 Cell Go Kit IP CCTV Camera Set User Guide 



KIT-IPC-B32P-FSP12 Cell Go Kit IP CCTV Camera Set User Guide



Contents

- [1 Safety Instructions](#)
- [2 Troubleshooting](#)
- [3 Documents / Resources](#)
- [4 Related Posts](#)

Safety Instructions

- This Imou solar panel is only applicable to Imou products.
- Transport, use and store the device under the allowed humidity and temperature.
- Do not install the solar panel parallel to the ground or in places with any objects blocking sunlight.
- Avoid install the device in places with strong electromagnetic radiation.
- Do not disassemble or bend the solar panel in any way.
- Make sure that the panel is clear of dust, dirt, and any type of debris. Regularly wipe the solar panel to remove dust or debris.
- Keep the panel away from any liquid to avoid damage to the internal components.
- Do not heat the solar panel or put it into fire.
- Do not puncture, hit, or put heavy load on the solar panel.
- The operating temperature range of the mounting bracket is from -20 °C to +65 °C (-4 °F to +149 °F).


Troubleshooting

Q: Why does the solar panel stop charging the battery-powered cameras?

A: If the solar panel is not keeping your camera charged, follow the steps below: • Unplug the charging cable and reinsert it into the solar panel to ensure the connection between both devices is stable. • Make sure that your solar panel is aimed toward the sun and is not obstructed by buildings, plants or other objects. • Make sure that your camera is not in temperatures below 0 °C (32 °F) or above 45 °C (113 °F).



Documents / Resources

	<p>Imou KIT-IPC-B32P-FSP12 Cell Go Kit IP CCTV Camera Set [pdf] User Guide KIT-IPC-B32P-FSP12 Cell Go Kit IP CCTV Camera Set, KIT-IPC-B32P-FSP12, Cell Go Kit IP C CTV Camera Set, IP CCTV Camera Set, CCTV Camera Set, Camera Set</p>
---	--