



## imou KD2A Smart Door Lock Touch Keypad User Manual

[Home](#) » [imou](#) » imou KD2A Smart Door Lock Touch Keypad User Manual 



User Manual  
Cubo1 Series Smart Lock  
V1.0.0  
U0009581



## Contents

- 1 Important Safeguards and Warnings
- 2 Package Contents
- 3 Dimensions
- 4 Installation
- 5 Overview
- 6 Settings
- 7 Lock/Unlock Door
- 8 Parameters & Help
- 9 Documents / Resources
  - 9.1 References

## Important Safeguards and Warnings

This section introduces content covering the proper handling of the device, hazard prevention, and prevention of property damage. Read carefully before using the device, and comply with the guidelines when using it.

### Operation Requirements

- Do not disclose your passcodes to others and change them regularly.
- Avoid liquids from flowing into the device.
- Replace the battery in time when the power is low.
- When installing battery, always make sure the positive and negative poles are aligned correctly as the indications in the battery compartment. Wrong direction might cause faults such as rupture, leakage, and overheating.
- Do not frequently touch the keypad or touch keys with objects having a sharp end such as a ball pen.
- Do not use the lock outdoors or in severe environment with high level of temperature, humidity or salinity.
- Do not wipe the lock with strong acid or alkali, corrosive organic solvents, or polishing objects, to avoid damaging the external parts.

### Privacy Protection Notice

As the device user or data controller, you might collect the personal data of others such as their face, fingerprints, and license plate number. You need to be in compliance with your local privacy protection laws and regulations to protect the legitimate rights and interests of other people by implementing measures which include but are not limited: Providing clear and visible identification to inform people of the existence of the surveillance area and provide required contact information.

### About the Manual

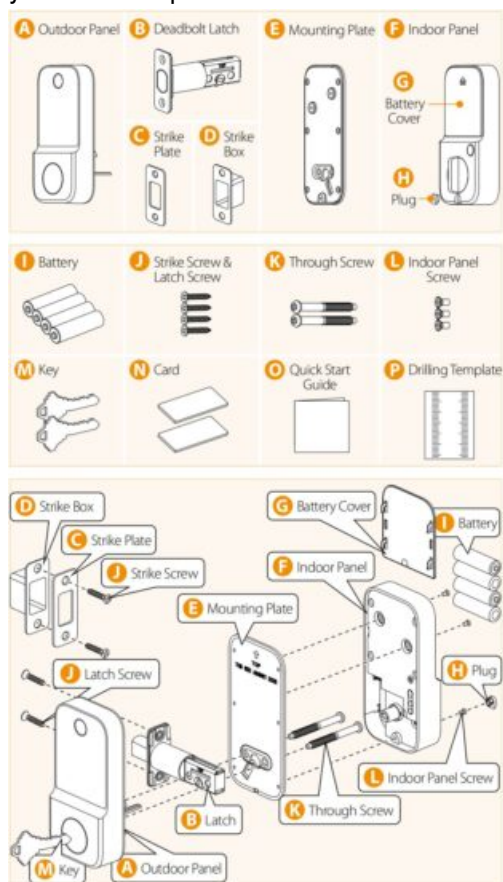
- The manual is for reference only. Slight differences might be found between the manual and the product.
- We are not liable for losses incurred due to operating the product in ways that are not in compliance with the manual.
- The manual will be updated according to the latest laws and regulations of related jurisdictions. For detailed information, see the paper user manual, use our CD-ROM, scan the QR code or visit our official website. The manual is for reference only. Slight differences might be found between the electronic version and the paper version.
- All designs and software are subject to change without prior written notice. Product updates might result in

some differences appearing between the actual product and the manual. Please contact the supplier for the latest program and supplementary documentation.

- There might be errors in the print or deviations in the description of the functions, operations and technical data. If there is any doubt or dispute, we reserve the right of final explanation.
- Upgrade the reader software or try other mainstream reader software if the manual (in PDF format) cannot be opened.
- All trademarks, registered trademarks and company names in the manual are properties of their respective owners.
- Please visit our website, contact the supplier if any problems occur while using the device.
- If there is any uncertainty or controversy, we reserve the right of final explanation.

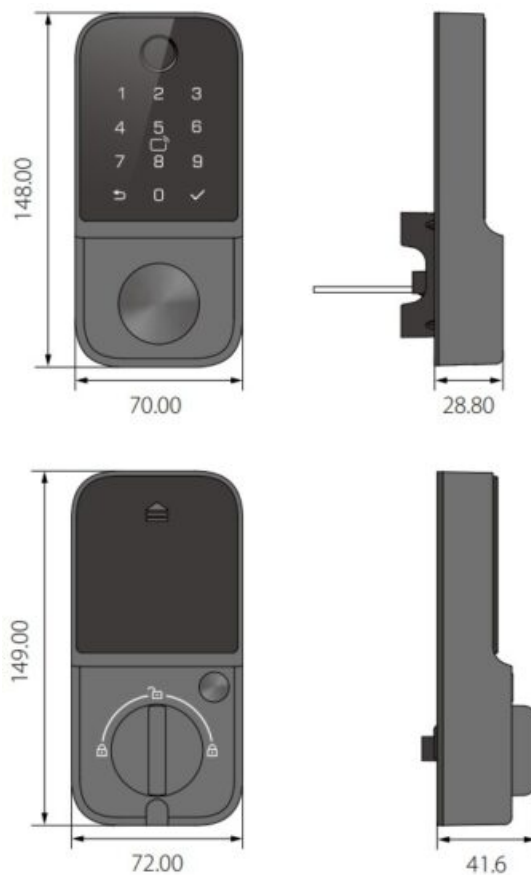
## Package Contents

**i** The following is for reference only. Actual components should be confirmed with physical items.

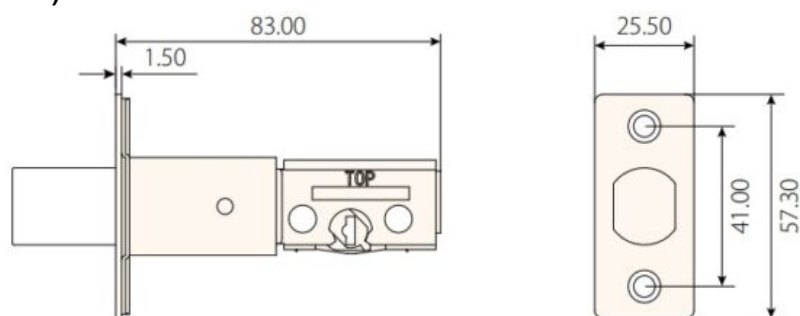


## Dimensions

Panel (unit: mm)



**Deadbolt Latch (unit: mm)**

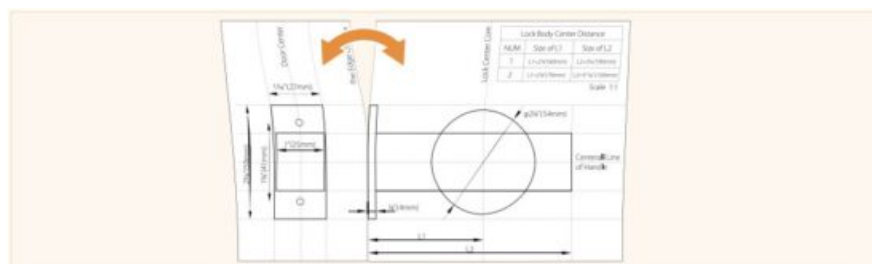


## Installation

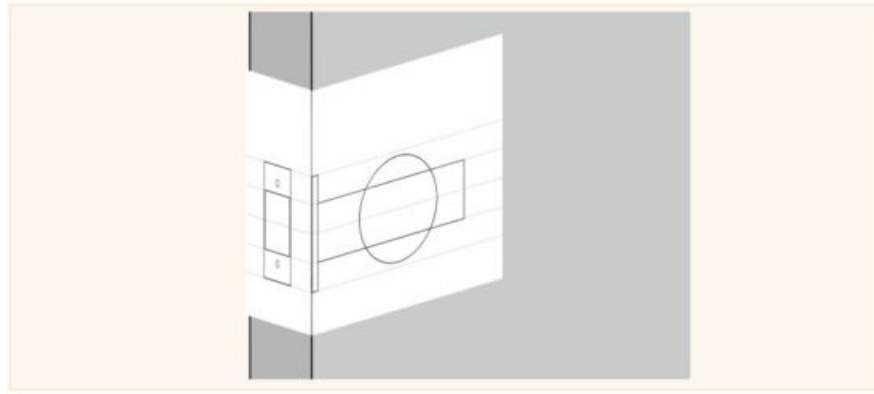
**i** Here, the installation illustrations serve as examples for left-handed doors. For right-handed doors, please set the door opening direction on the lock to “right handed” after installation. Tap Set Up Door Opening Direction for detailed setting procedures.

### Step 1 Drill Holes

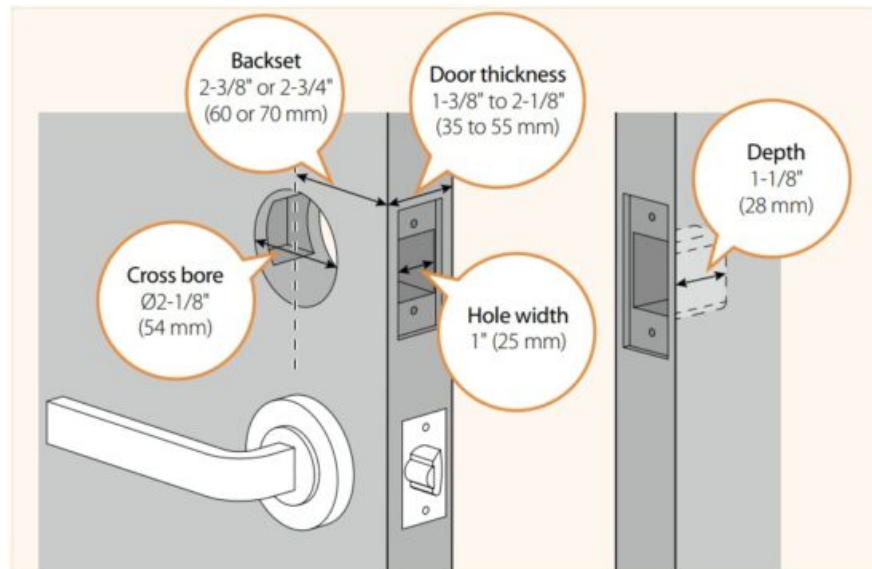
1. Tear off the drilling template along the perforated line.



2. Attach the drilling template to the door. Make sure the center lines are aligned.



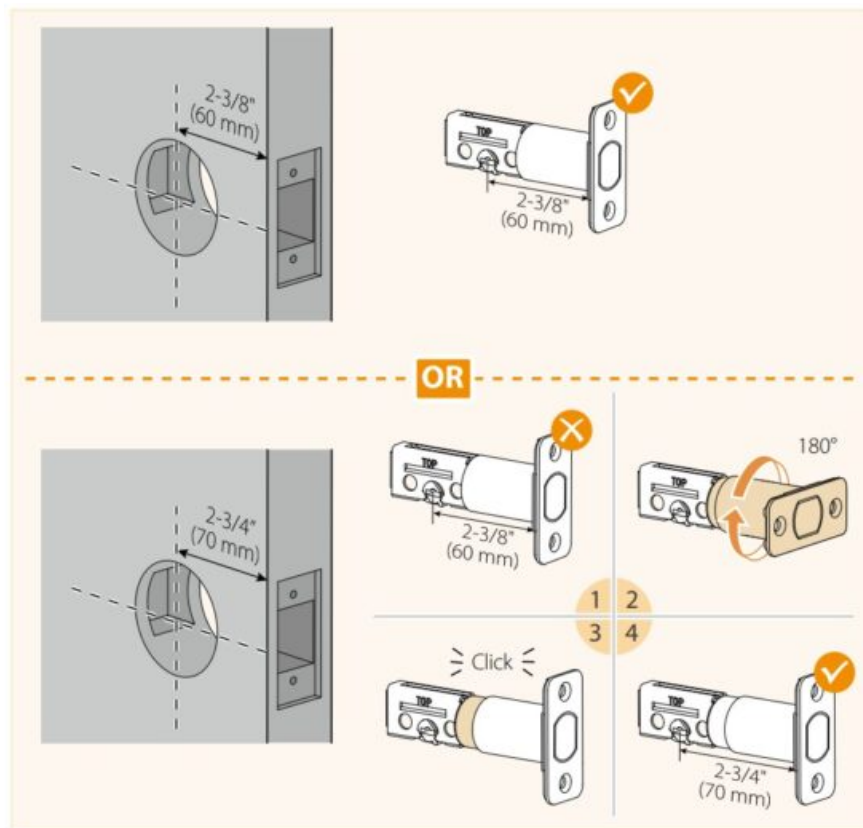
3. Drill holes as the template marks.



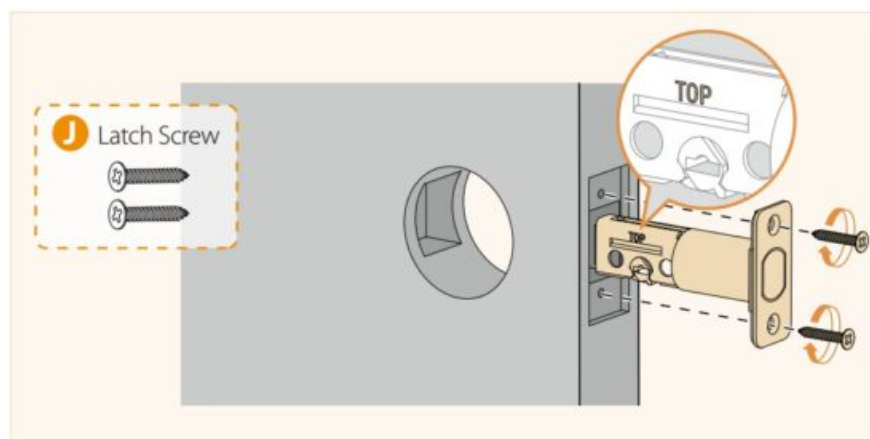
## Step 2 Install the Deadbolt Latch

1. Check whether the latch needs to be adjusted.

- For a 2-3/8" (60 mm) backset, directly insert the latch into the hole.
- For a 2-3/4" (70 mm) backset, rotate the faceplate of the latch 180 degrees to extend its length.

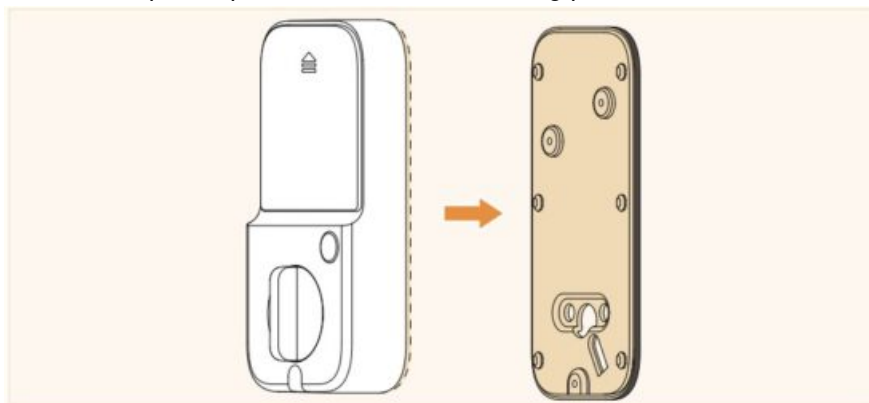


2. Inset the latch into the designated hole with the TOP mark on the latch facing up.  
Secure the latch with No. J screws and ensure the faceplate flushes with the door edge.

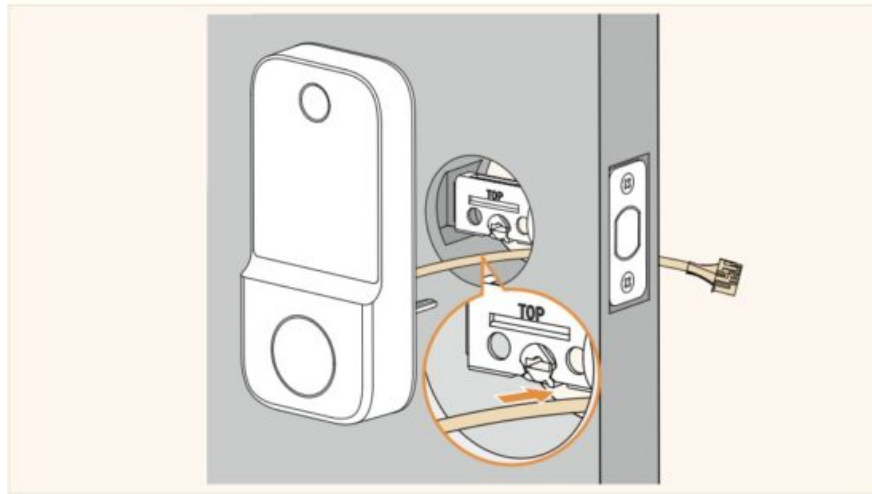


### Step 3 Install the Outdoor Panel

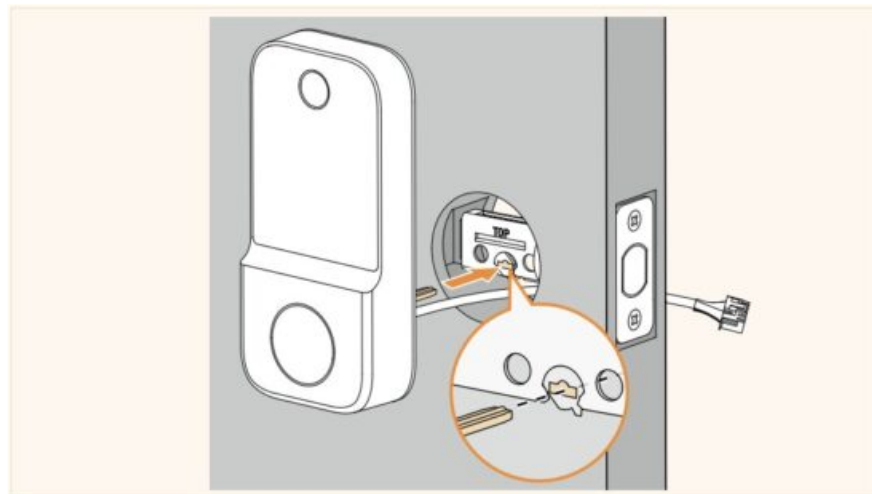
- i** Before mounting the outdoor panel, please detach the mounting plate from the back of the indoor panel.



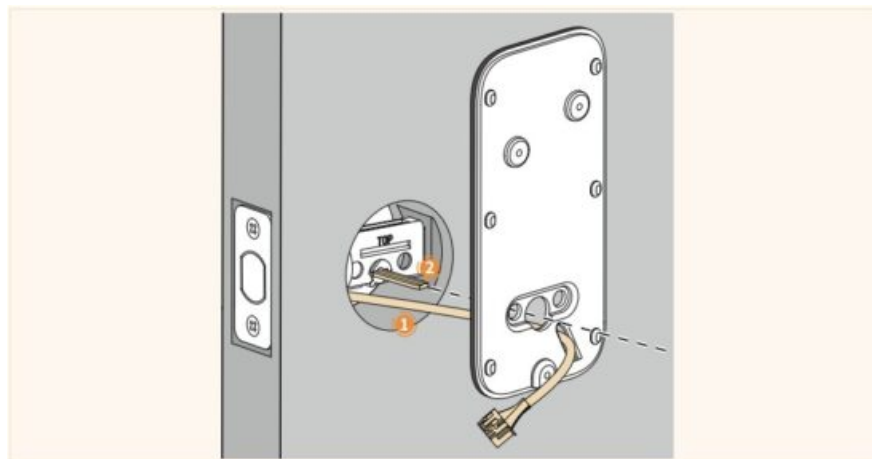
1. Make sure the deadbolt is retracted, and then route the cable of the indoor panel through the gap beneath the latch.



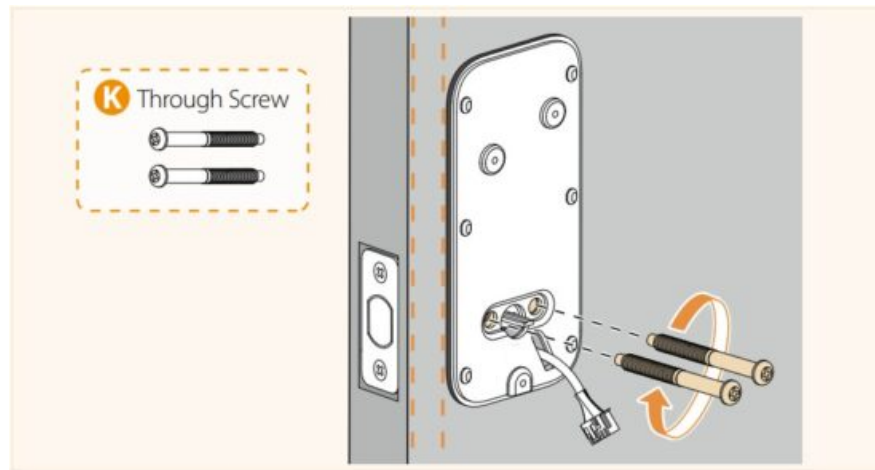
2. Position the tailpiece horizontally and insert it into the slot of the latch.



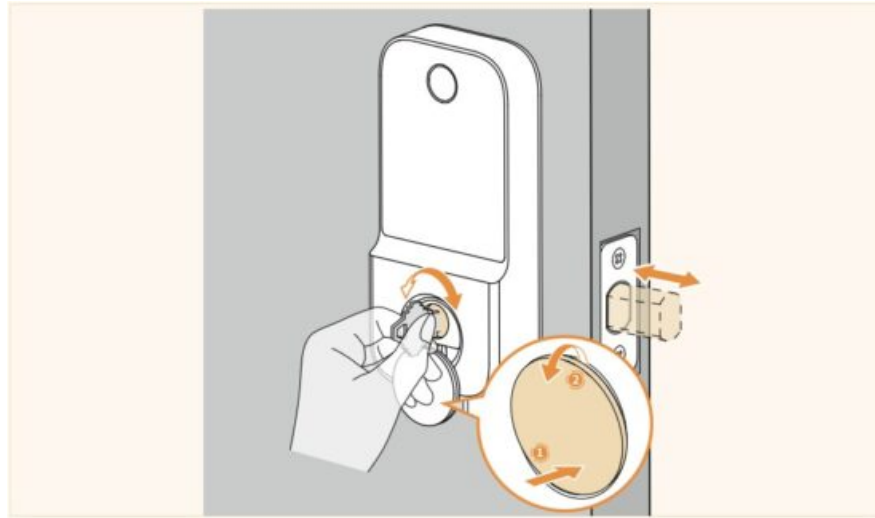
3. Attach the mounting plate to the inner door surface with the silicone pad in contact with the door. Guide the cable and tailpiece through their respective holes on the mounting plate.



4. Keep the mounting plate parallel to the door edge, then secure it with No. K screws.



5. After the outdoor panel is mounted, press the bottom of the keyhole cover to lift it up. Insert and rotate the key to check if the deadbolt can extend and retract smoothly.



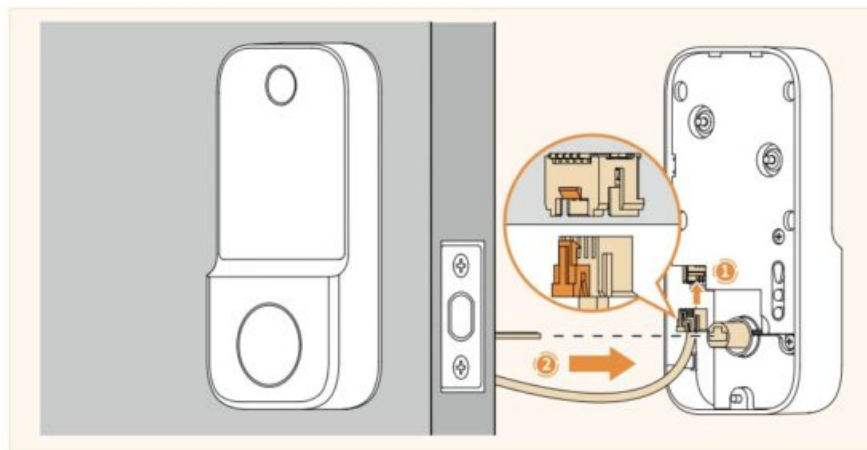
#### Step 4 Install the Indoor Panel

- i** Before installing the indoor panel, remove the battery cover.

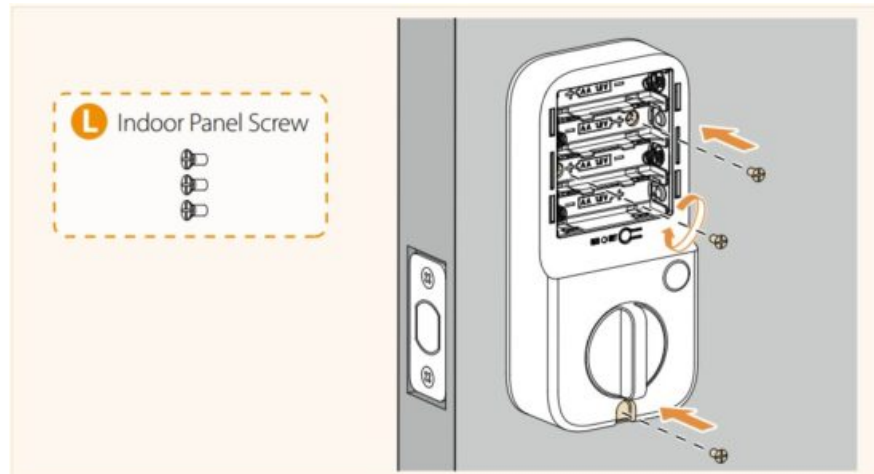


1. Plug the cable connector into the socket of the indoor panel with the locking tab facing outward. Push the connector until it firmly locks in place, then insert the tailpiece into the specified hole on the indoor panel.

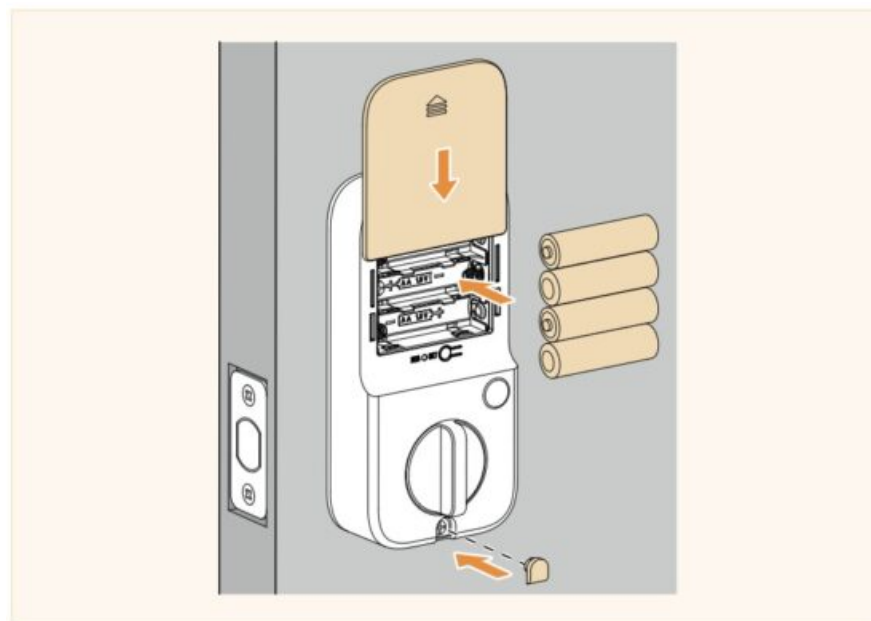




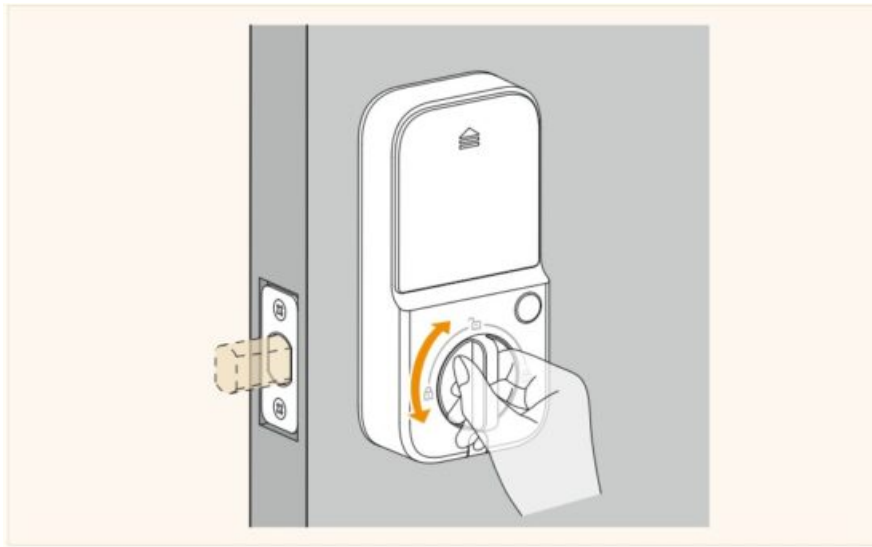
2. Secure the indoor panel with No. L screws.



3. Install batteries and pay attention to the terminal orientation. Replace the battery cover and the plug.

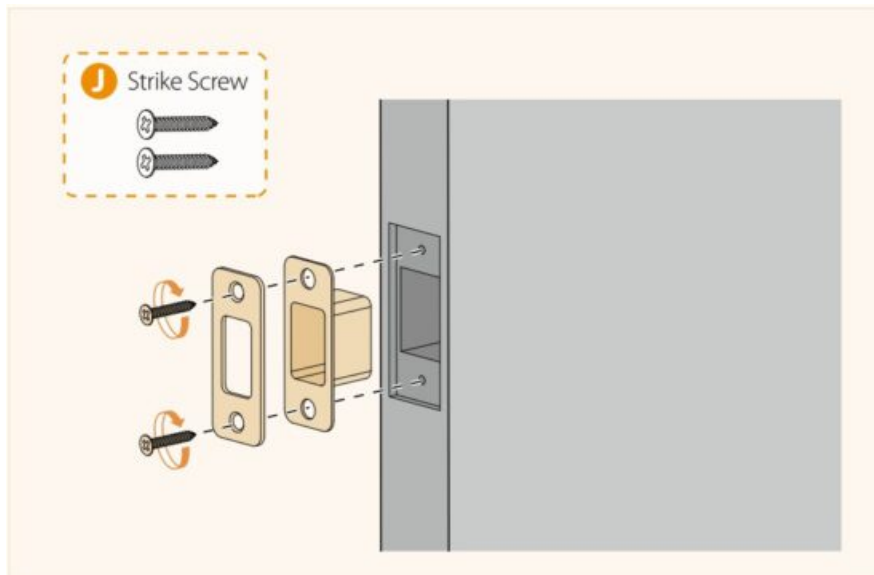


**i** After installation, rotate the thumbturn to test if the deadbolt can move freely. The rotation direction depends on the door's opening and here is presented for lefthanded doors.



#### Step 4 Install the Indoor Panel

**i** Make sure you have drilled the hole to a depth of 1-1/8" (28 mm) in the doorjamb. Put the strike box into the recess. Align the strike plate to the strike box. Before you finally tighten the strike plate with No. J screws, close the door and check if the latch can engage properly.



#### Checklist

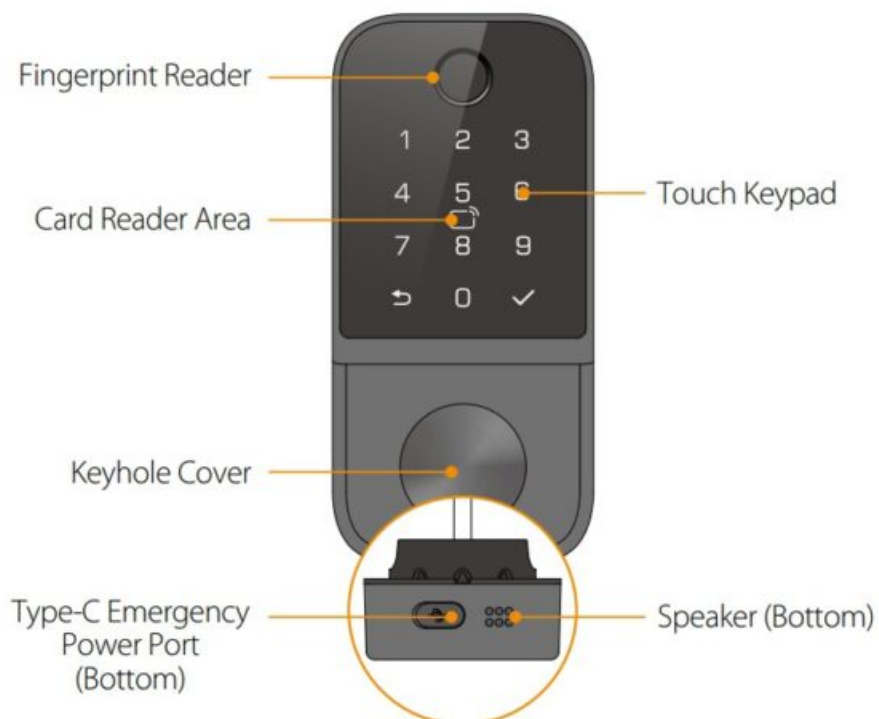
**i** After installation is complete, please check the following items.

- Use four AA 1.5V alkaline batteries, ensuring they are inserted with correct polarity as indicated in the battery compartment.
- All screws are tightened.
- There is a ringtone after all batteries are installed and the keypad lights up.
- When the lock is in initial state, touch the keypad to wake it up, enter any passcode followed by ✓ or use any fingerprint or card, the door can be unlocked, since you are in the trial mode now.
- Press against the closed door to confirm it is tightly shut.
- When the door is locked, rotate the mechanical key and the door can be opened.
- The thumbturn and the lock/unlock button functions well.
- All entry methods can be registered and unlock the door.

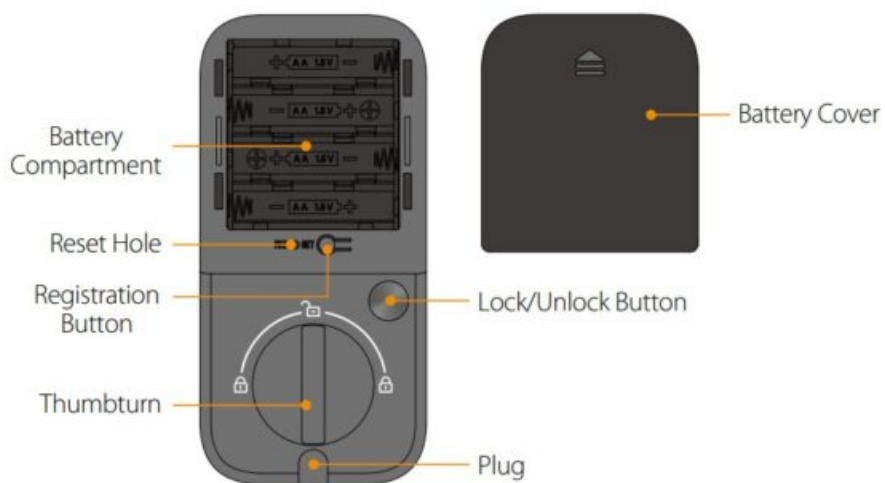
#### Overview

## Panel

### Outdoor Panel



### Indoor Panel



### Touch Keypad



	Digits can be entered
	Card reader area
	Back button
	Confirm button; Manual locking: After the door is opened, wake up the keypad and hold  for 3 s to lock

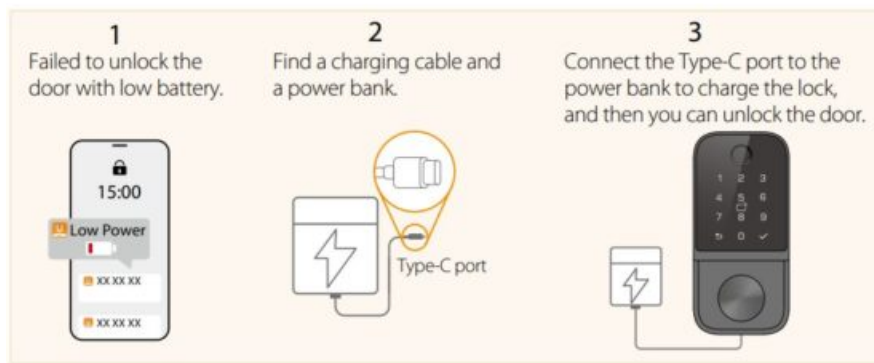
## Low Battery Alert

Please replace batteries in time once the low battery alarm goes off.

- Always ensure positive (+) and negative (-) directions correct when inserting batteries.
- To avoid battery leakage, check them regularly (every 3 months recommended).
- Do not mix new and used batteries.
- Passcode, card or fingerprint unlocking may fail when the battery is low.



## Emergency Power



## Settings

### Set Up Admin Passcode

- **i** The lock is in trial mode (initial state) after installation or reset and you can open the door with any unregistered passcode, fingerprint or card.
- For the sake of security, you are required to create an admin passcode before activating other access methods.



- **i** To change the admin passcode in case you forgot it, please enter the admin mode with the admin fingerprint (the first registered fingerprint). Restoring to factory settings to create a new admin passcode is another option which should be thoughtful, since all data will be cleared.

### Admin Mode

- **i** The steps below should be repeated every time you want to do programming.
- The first registered fingerprint is regarded as admin fingerprint which can also be used as the admin verification. For detailed operation, please see the section “Register Fingerprint.”

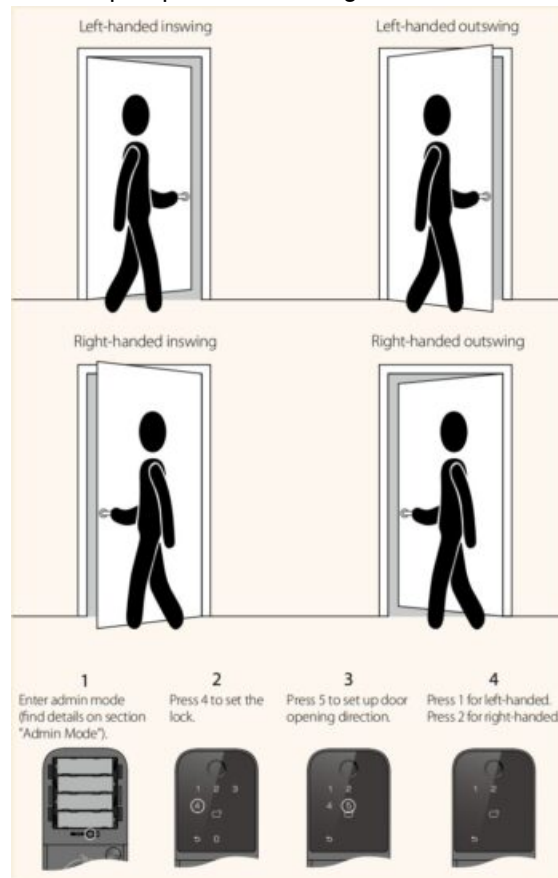


### Set Up Door Opening Direction

Set up the door opening direction on the lock between left-handed and right-handed according to your actual door

opening type. By default, the lock is configured as lefthanded.

**i** The illustrations are depicted from the perspective of facing door from the outside.



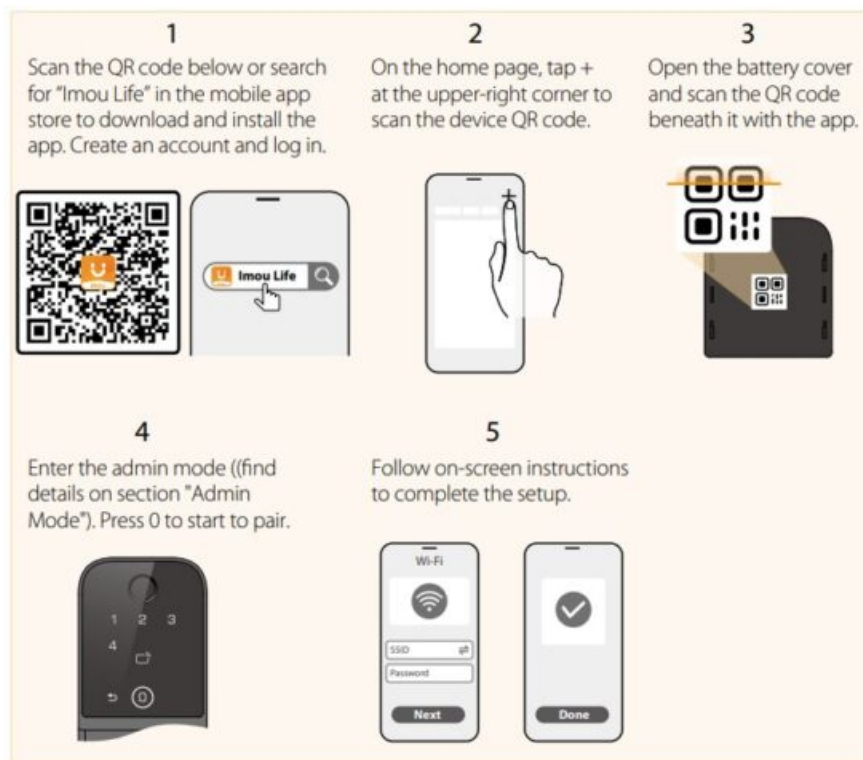
### Change Admin Passcode/ Fingerprint



### Connect the Device to the Network

After adding the lock to the Imou Life app, you can remotely unlock the door from the app, generate temporary passcode, manage users, receive push notifications, etc.

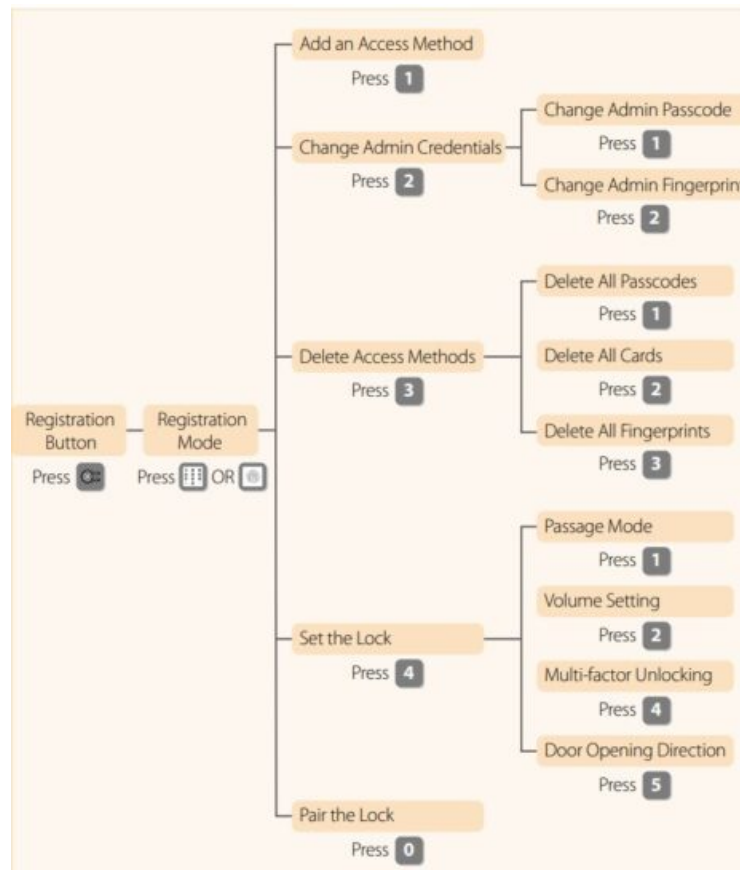
- i** Ensure the full-power batteries are correctly installed; otherwise, the lock may fail to connect to the network.
- This lock is exclusively compatible with 2.4 GHz Wi-Fi network.
- If you already have Imou Life App, make sure it is the latest version. Follow the instructions in the app to complete the setup.
- After the pairing process is completed, the voice prompts the operation is successful.



<http://mobile.easy4ipcloud.com/imou/detect.html>

## Quick Menu

- **i** You need to enter the registration mode every time you want to make some configurations such as setting entry methods.
- The menu is for reference only, and the actual interface may vary.



## Register Passcode

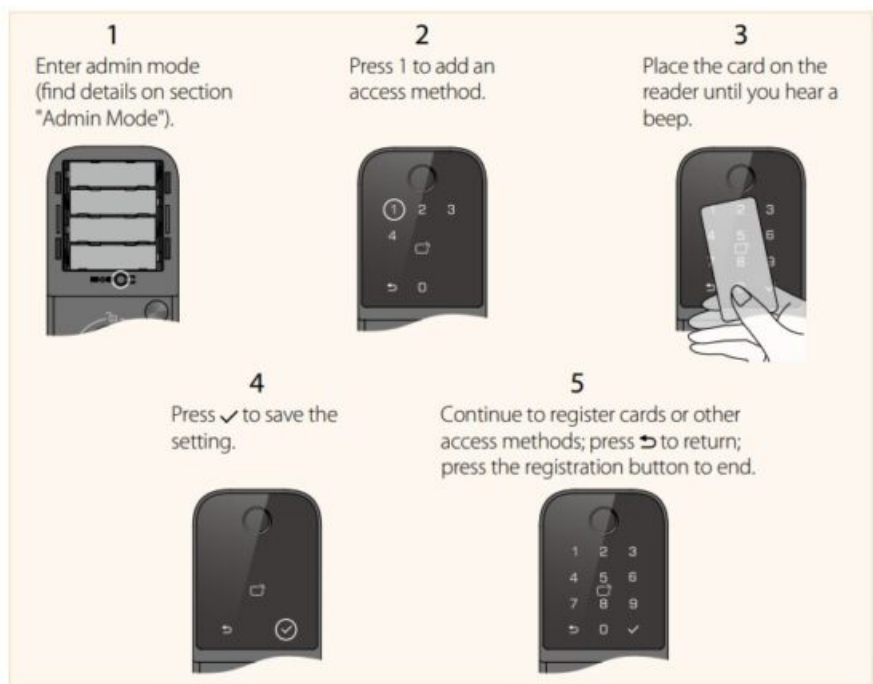


- **i** In admin mode, you can register digital entry methods of passcodes, cards and fingerprints without any particular order. You may start with any method of the registration, then move on to others, or mix up in any way that suits your process.
- The user passcode consists of 6 to 12 digits.
- Up to 10 passcodes can be registered. The voice alert goes off when the limit reached and the lock enters sleep mode.



### Register Card

- **i** In admin mode, you can register digital entry methods of passcodes, cards and fingerprints without any particular order. You may start with any method of the registration, then move on to others, or mix up in any way that suits your process.
- Please keep the registered card secure. If it is lost, you'd better clear all registered cards. Please see the section "Multi-delete."
- Up to 10 cards can be registered. The voice alert goes off when the limit reached and the lock enters sleep mode.



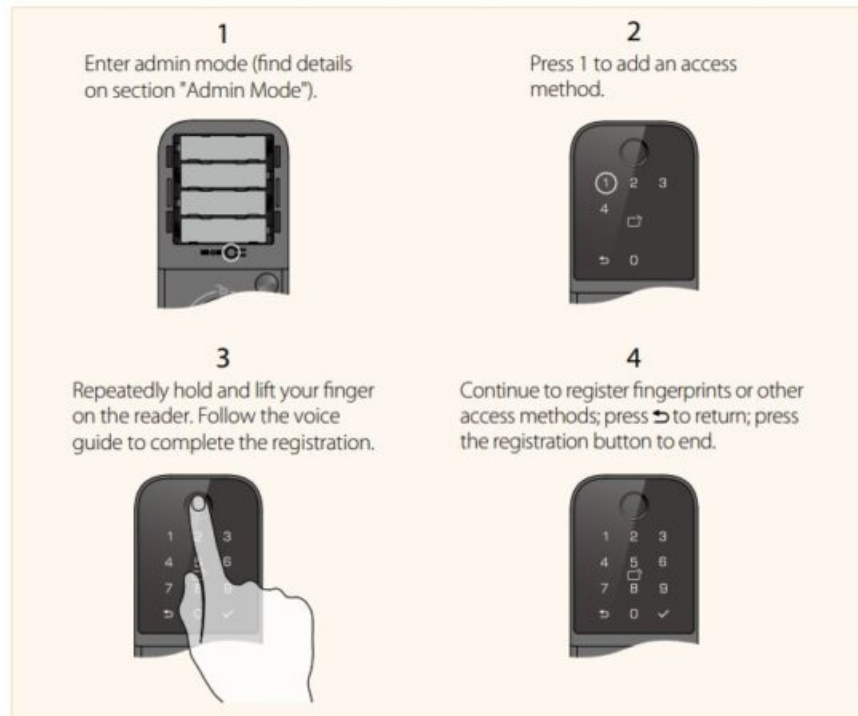
### Register Fingerprint

- **i** In admin mode, you can register digital entry methods of passcodes, cards and fingerprints without any



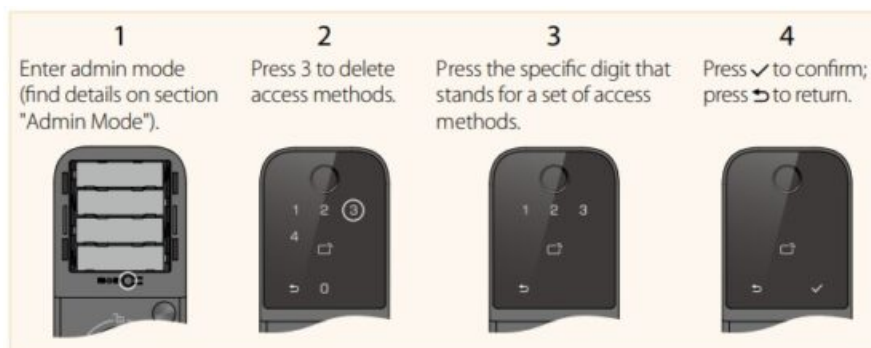
particular order. You may start with any method of the registration, then move on to others, or mix up in any way that suits your process.

- The first registered fingerprint is regarded as the admin fingerprint and can be the replacement of admin passcode to authenticate the admin identity.
- Please finish the registration before the lock voices it has timed out.
- Up to 50 fingerprints can be registered. The voice alert goes off when the limit reached and the lock enters sleep mode.



### Group Delete Access Methods

- **i** • In this mode, you can delete multiple entry methods of the same kind simultaneously. However, admin passcode cannot be deleted.
- Digit of entry methods to be deleted in sets: 1 for passcode, 2 for card, 3 for fingerprint.



### Passage Mode

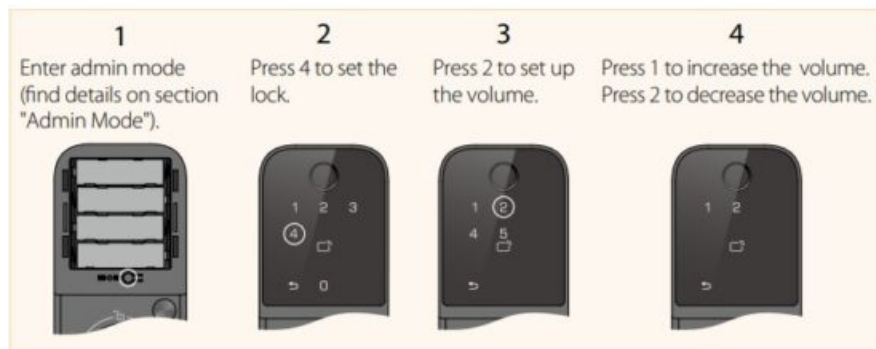
In passage mode, the door can be directly unlocked without any authorized entry methods, which means you can access freely.



- **i** To unlock the door after the passage mode is activated:
- With passcode: Touch the keypad to wake it up, and then press to unlock the door.
- With card or fingerprint: Place the card on the reader or scan any of the fingerprint.

### Set Up Volume

The lock is silenced if you decrease the volume to the lowest. There will be no sounds in non-registration mode like key tones or some voice prompts.



### One-time Silence Mode

The lock will be mute for a single time on unlocking and locking the door.



### Multi-factor Authentication

By enabling the multi-factor authentication, you are allowed to access after verifying both the passcode and fingerprint together. Unlocking solely using the passcode or the fingerprint is not supported.

- **i** You should enable the function both on the lock and the app to activate it.
- Make sure you have at least registered one fingerprint and one passcode before turning on the multi-factor authentication.
- If your fingerprint or passcode fails verification for five times within five minutes, the lock will be disabled for 3 minutes. The lock will automatically recover after lockout period or return to normal state after you unlock the door from inside with either thumbturn or the lock/unlock button, hold down the registration button for 3 s or remotely unlock the door with the app.

- You can transpose the order of verifying passcode and fingerprint.



## Lock/Unlock Door

### Unlock Door from Outside

⚠ If you had several failed unlocking attempts within 5 minutes, the lock will be disabled for 3 minutes, during which you cannot open the door from outside.

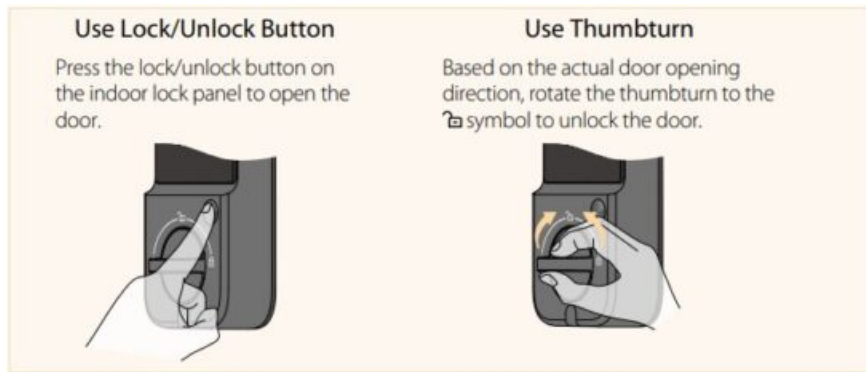
- Incorrectly enter the passcode for 5 consecutive times.
- Failed to read the card for 5 consecutive times.
- Failed to read the fingerprint for 5 consecutive times.

The lock will automatically recover after lockout period or return to normal state after you unlock the door from inside with privacy button, hold down the registration button for 3 s or remotely unlock the door with the app.

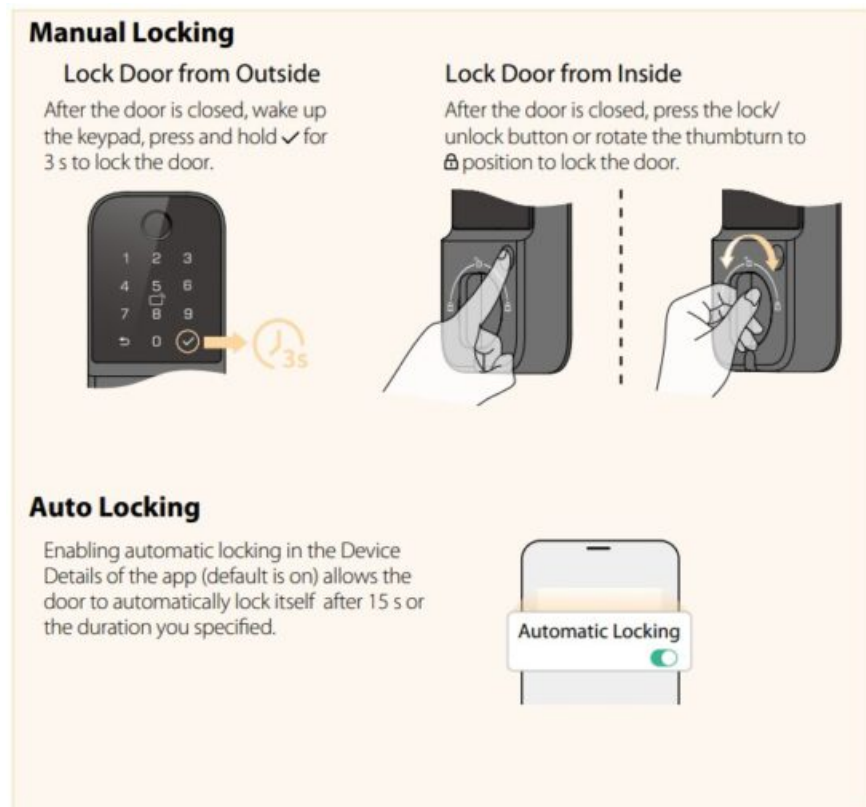


**i** You can use anti-peep code to keep secure when unlocking the door. Any digits can be added before or after the actual passcode to prevent others spying nearby, supporting up to 32 digits in total, i.e. random digit + correct passcode + random digit.

## Unlock Door from Inside



## Auto/Manual Door Locking



## Privacy Locking

When the privacy locking is applied, the door cannot be unlocked with normal entry methods from outside.

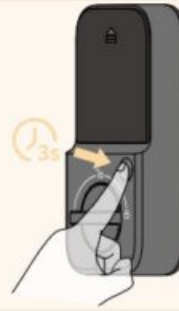
 To disable the privacy locking, you can:

- Press and hold the lock/unlock button for 3 s until you hear the voice prompt.
- Use admin credentials or the mechanical key to unlock the door outside.
- Press the lock/unlock button or use the thumbturn to unlock the door inside.
- Remotely unlock the door with Imou Life app.
- Turn off the Lock Inside feature in case it has been activated through the app.

### Privacy Locking

To enable the privacy locking, you can:

- Press and hold the lock/unlock button for 3 s to activate the privacy locking until you hear the voice prompt after the operation is successful.
- Toggle on Lock Inside in Device Details > Unlock Settings of the app.



## Parameters & Help

### Specification

**i** If there are any changes in the specification, the actual product shall prevail.

Item	Description
Card Type	Mifare 1
Read Distance	<10 mm (0.39")
Response Time	<0.5 s
Card Capacity	10
Keypad Type	Touch keypad
Passcode Length	6 to 12 digits
Passcode Capacity	10
Anti-peep Code	When you unlock the door, add any digits before or after the actual passcode (max.32 digits in total).
Fingerprint Module	Capacitive reader
Fingerprint Capacity	50
Multifactor Authentication	With passcode and fingerprint together
Remote Unlock	Available in bidirectional communication mode
Operating Voltage	4.5–6.5 VDC, four 1.5V AA alkaline batteries
Battery Lifespan	With 10 times unlocking per day, the default unidirectional communication mode is about 12 months usage while bidirectional communication mode, switchable in the app, is about 4 months.
Low Power Alarm	≤4.8 VDC
Backup Power	Supply power through Type-C port
Lockout Threshold	The lock will be disabled for 3 minutes after continuous failed unlocking attempts with passcode (5 times), card (5 times), or fingerprint (5 times) in 5 minutes. The feature is enabled by default on the app.
Door Thickness	35 mm (1-3/8") –55 mm (2-1/8")
Lock Body	Deadbolt latch
Positioning	Backset: 60 mm (2-3/4") or 70 mm (2-3/8")
Operating Temperature	-30°C to +60°C (-22°F to +140°F)
Operating Humidity	10%–93%
Factory Reset	Yes, with button
Wi-Fi Compatibility	Requires 2.4 GHz Wi-Fi network

### Get IMOU Support

To get support for IMOU products and services, such as FAQ, warranty, videos, manuals and contact information, please scan the QR code below or visit <https://www.imou.com/support>

If you have any questions or suggestions, please contact us at [service.global@imoulife.com](mailto:service.global@imoulife.com)


For more information about IMOU, please visit <https://www.imou.com>



<https://www.imoulife.com/support>



## Documents / Resources

 <p><b>User Manual</b> KD2A Series Smart Lock Version 1.0</p>	<p><a href="#">imou KD2A Smart Door Lock Touch Keypad</a> [pdf] User Manual KD2A Smart Door Lock Touch Keypad, KD2A, Smart Door Lock Touch Keypad, Door Lock Touch Keypad, Lock Touch Keypad, Touch Keypad, Keypad</p>
--	--

## References

- [imou Imou Life](#)
- [User Manual](#)

### Manuals+ Privacy Policy

This website is an independent publication and is neither affiliated with nor endorsed by any of the trademark owners. The "Bluetooth®" word mark and logos are registered trademarks owned by Bluetooth SIG, Inc. The "Wi-Fi®" word mark and logos are registered trademarks owned by the Wi-Fi Alliance. Any use of these marks on this website does not imply any affiliation with or endorsement.