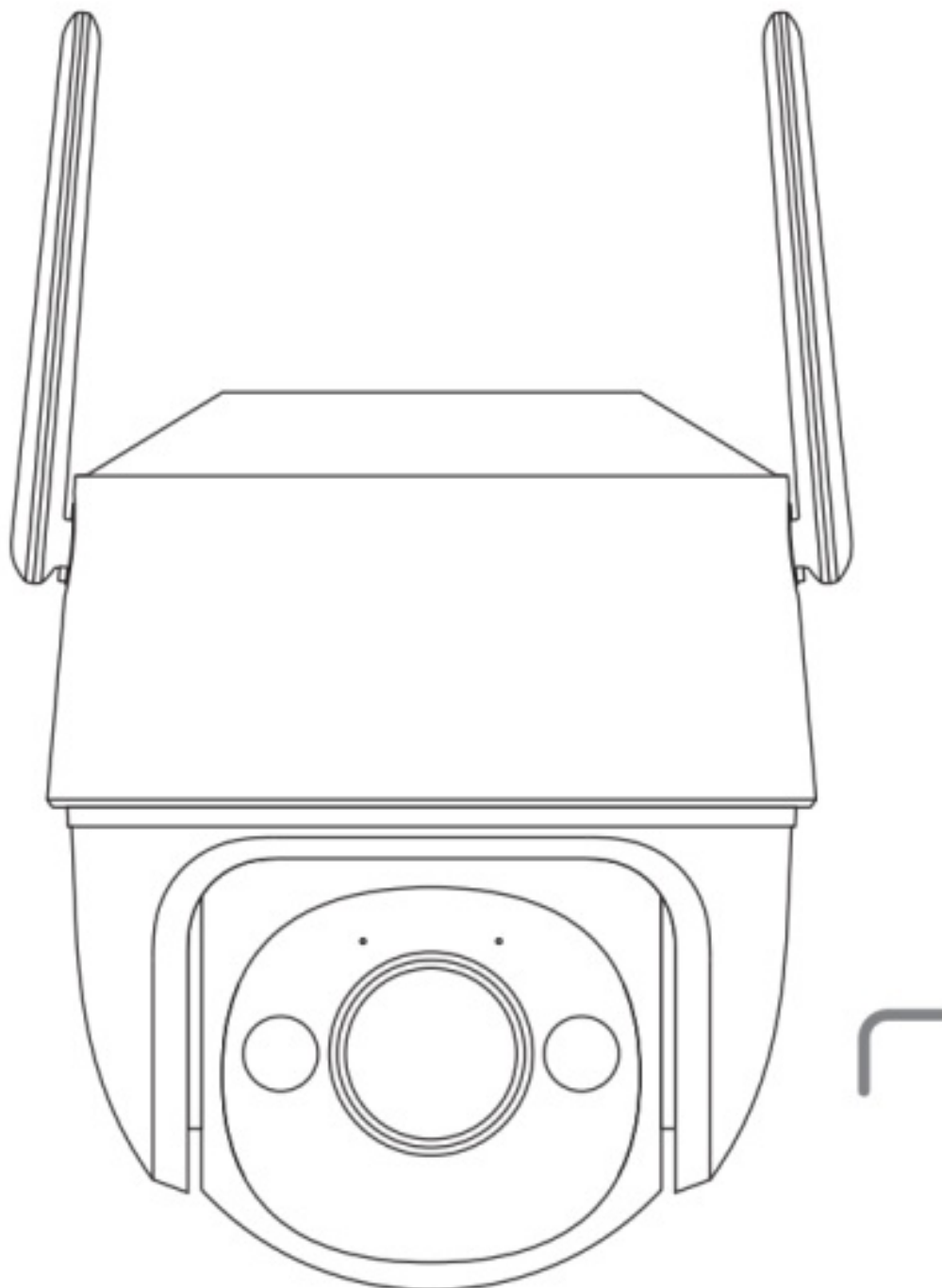


IMOU IPC-S41F Consumer Camera User Guide

[Home](#) » [imou](#) » IMOU IPC-S41F Consumer Camera User Guide 

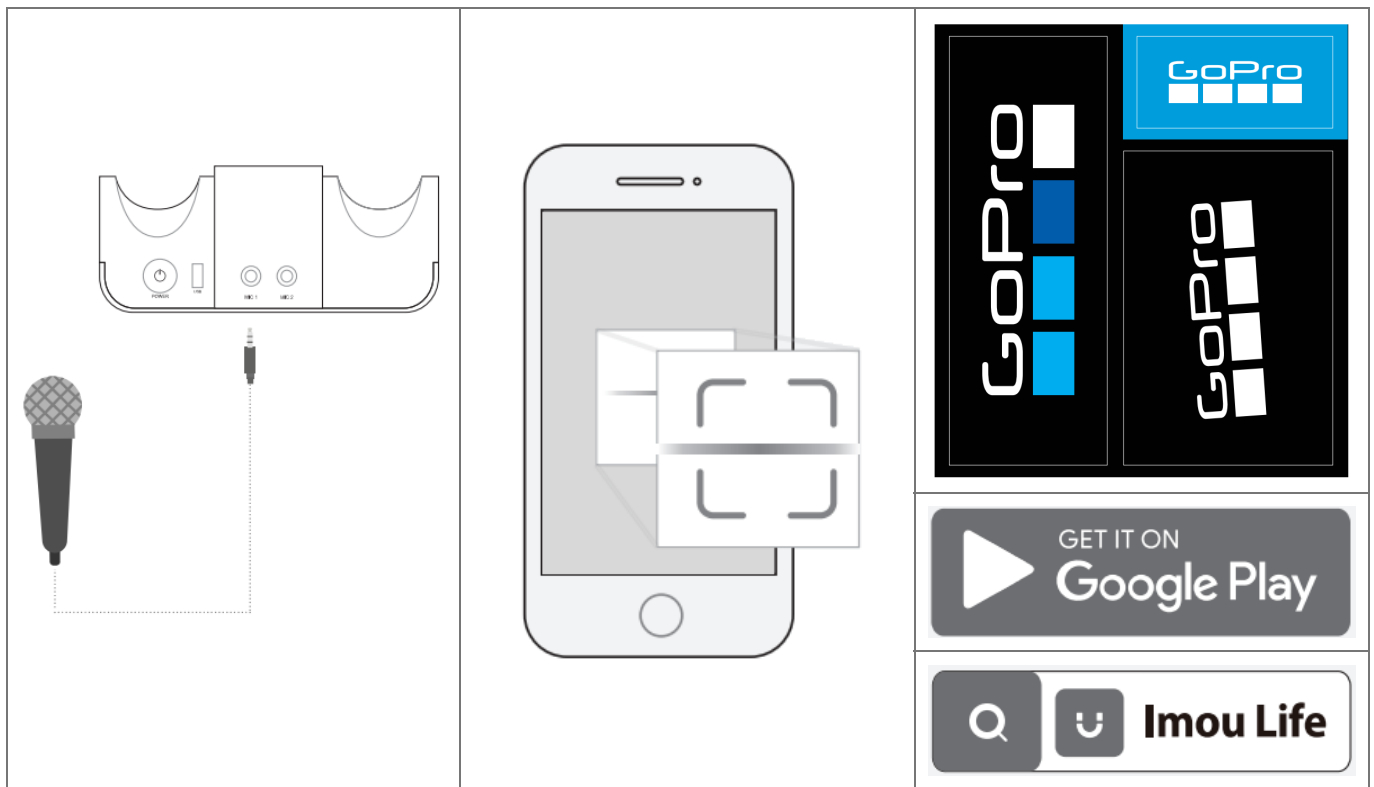
IMOU IPC-S41F Consumer Camera



Contents

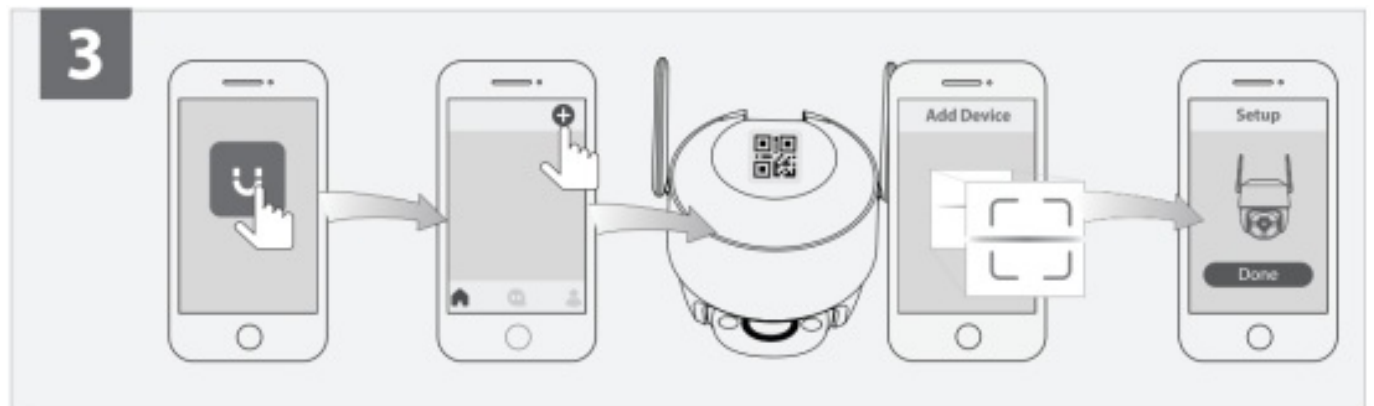
- [1 Box Content & Overview](#)
- [2 Power On the Camera](#)
- [3 Get the Imou Life App](#)
- [4 Set Up the Camera](#)
- [5 Install the Camera](#)
- [6 Documents / Resources](#)
- [7 Related Posts](#)

Box Content & Overview



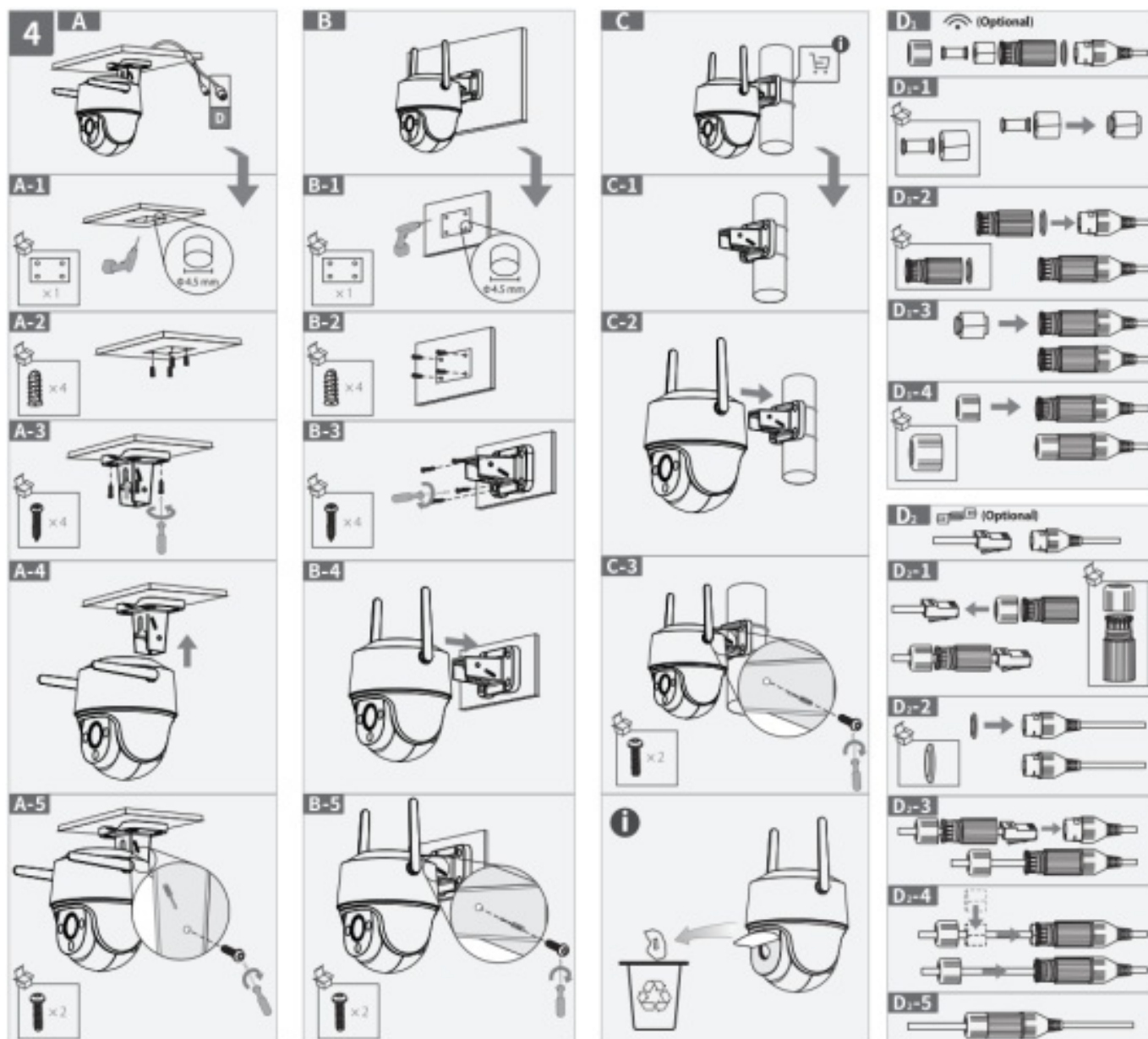
Set Up the Camera

Scan the QR code on the body of the device or on the cover of this guide with the app, and then follow on-screen instructions to complete the setup (**see part 3**).



Install the Camera

Make sure the mounting surface is strong enough to hold three times the weight of the camera. For detailed installation process, please **see part 4**.




| LED Status | Device Status |
|------------------------|---|
| Off | <ul style="list-style-type: none"> Power off LED turned off |
| Solid red | <ul style="list-style-type: none"> Booting Device malfunction |
| Flashing red | <ul style="list-style-type: none"> Network disconnected Failed to set up the device |
| Flashing green | Ready to set up the device |
| Solid green | Operating correctly |
| Flashing green and red | Updating firmware |

In case you need to reset the camera, press and hold the reset button for 10s until the LED turns solid red.

| | |
|---|---|
|  | service.global@imoulife.com |
|  | https://en.imoulife.com/support/help |
|  | https://en.imoulife.com |
|  | @imouglobal |



Documents / Resources

| | |
|---|--|
|  | IMOU IPC-S41F Consumer Camera [pdf] User Guide IPC-S41F, IPCS41F, 2AVYF-IPC-S41F, 2AVYFIPCS41F, IPC-S41F Consumer Camera, Consumer Camera |
|---|--|

[Manuals+](#).