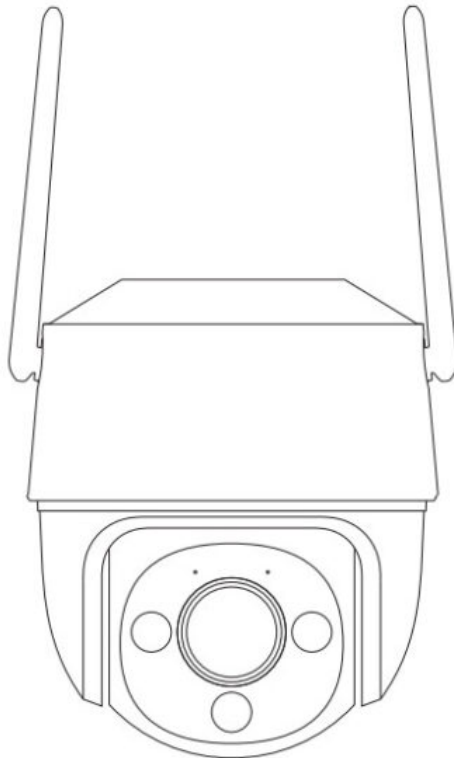




imou IPC-S21FTP Security Camera User Guide

[Home](#) » [imou](#) » imou IPC-S21FTP Security Camera User Guide 

imou



Quick Start Guide
V1.0.0

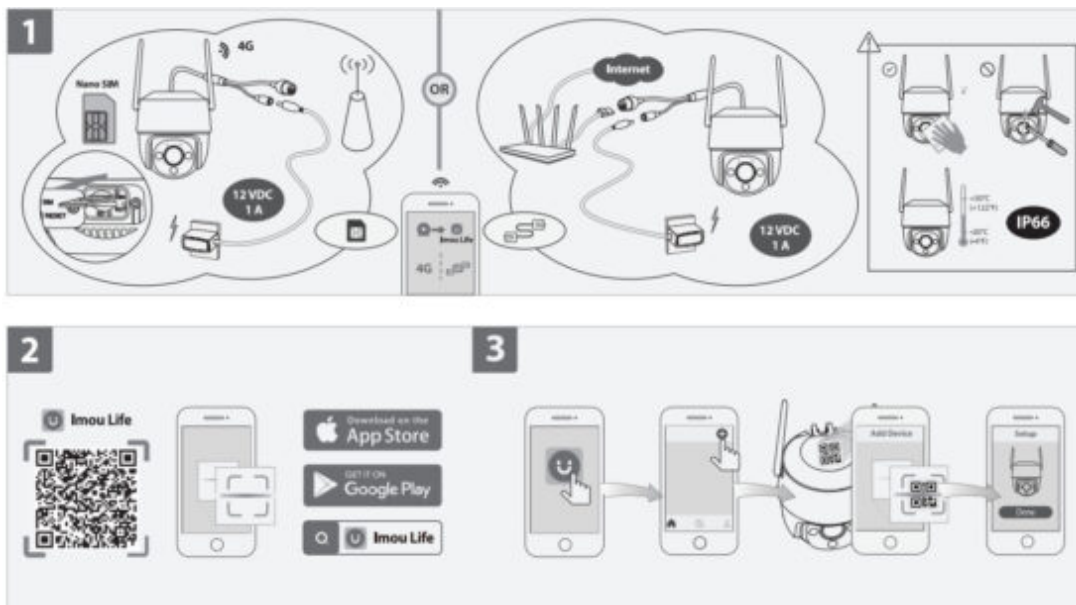
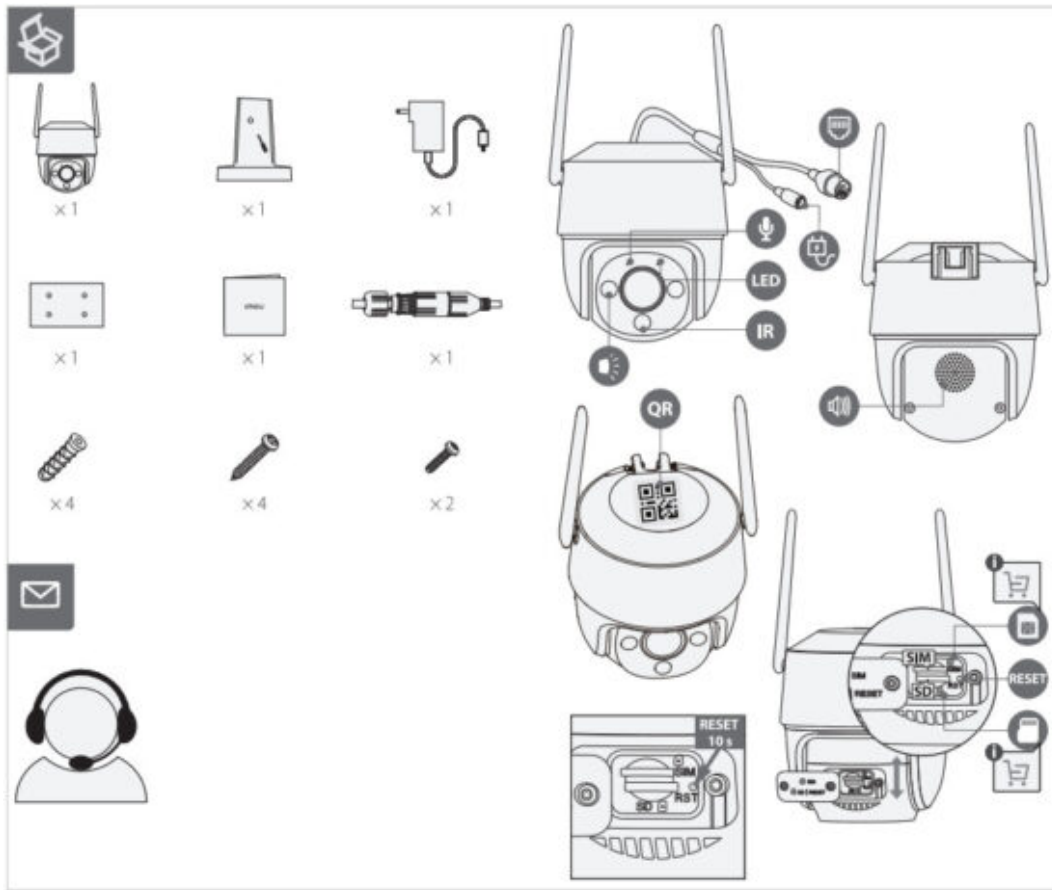
Contents

[1 IPC-S21FTP Security Camera](#)

[2 Documents / Resources](#)

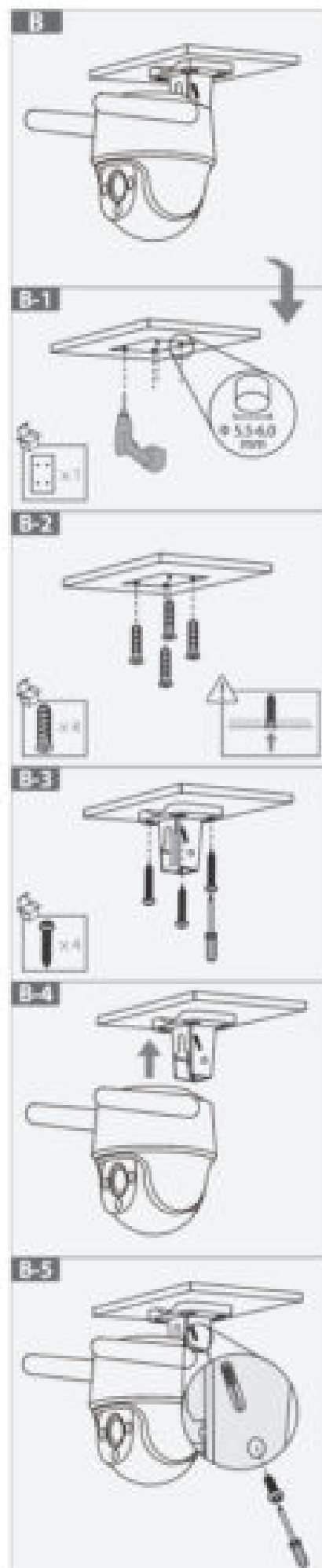
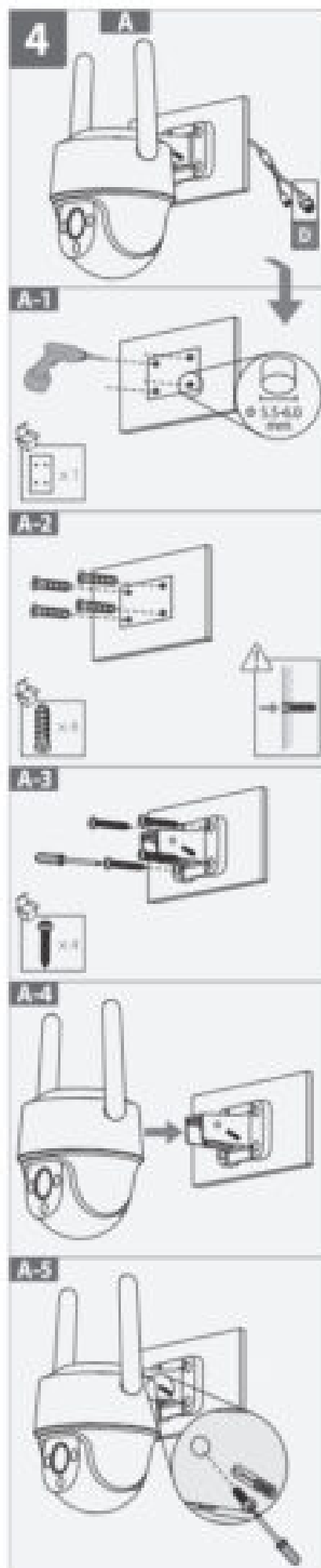
[2.1 References](#)

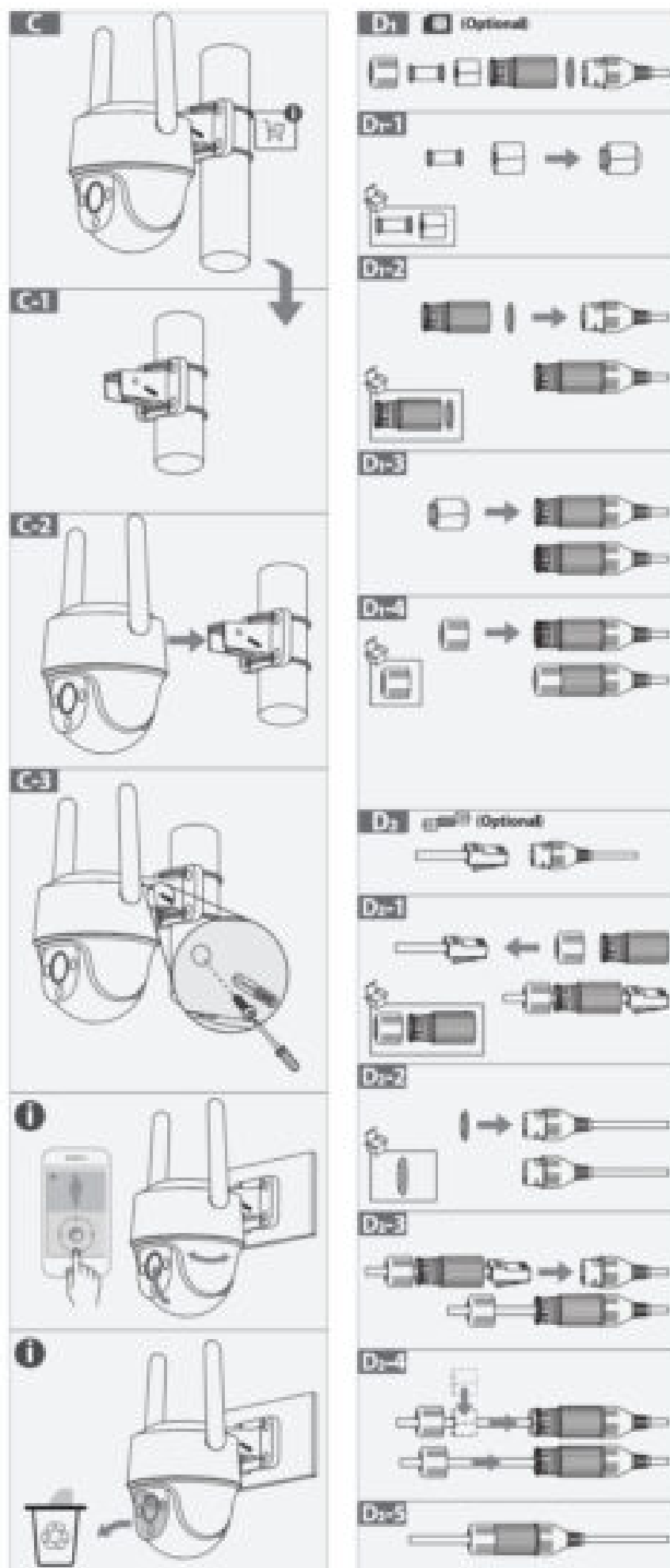
IPC-S21FTP Security Camera





<http://mobile.easy4ipcloud.com/imou/detect.html>





1. Power On the Camera (Part 1)

Connect the camera to power. But if you decide to use the cellular network, insert the Nano SIM card into the slot before powering on the camera.

2. Get the Imou Life App (Part 2)

Scan the QR code on part 2 or search for “Imou Life” to download and install the app. Create an account and log in.


3. Set Up the Camera (Part 3)


Scan the QR code on the body of the device or on the cover of this guide with the app, and then follow on-screen instructions to complete the setup.

4. Install the Camera (Part 4)

Make sure the mounting surface is strong enough to hold three times the weight of the camera.

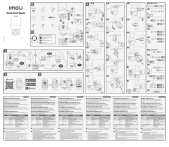
LED Status		Device Status
Green	Flashing rapidly	Connecting to the cellular network with SIM card inserted
	Flashing slowly	Ready to set up the device
	Solid	Working properly
Red	Flashing	Network disconnected
		Failed to set up the device
	Solid	Booting
		Device malfunction
Green & Red	Alternating	Updating firmware
Off	/	Power off LED turned off

 If you need to reset the camera, press and hold the reset button for 10 s. The LED turns solid red when the camera is booting.

 In case your camera is offline, please check:

1. Your camera is powered on.
2. If you choose cellular network, ensure the SIM card is properly inserted and not damaged; the cellular data plan is still active and your camera is placed within the network coverage.
3. If you use Ethernet connection, ensure the network cable is plugged in and the network is working.
4. If the problem still exists, reset your camera and set it up again.





[imou IPC-S21FTP Security Camera](#) [pdf] User Guide
IPC-S21FTP Security Camera, IPC-S21FTP, Security Camera, Camera

References

- [User Manual](#)

Manuals+, [Privacy Policy](#)

This website is an independent publication and is neither affiliated with nor endorsed by any of the trademark owners. The "Bluetooth®" word mark and logos are registered trademarks owned by Bluetooth SIG, Inc. The "Wi-Fi®" word mark and logos are registered trademarks owned by the Wi-Fi Alliance. Any use of these marks on this website does not imply any affiliation with or endorsement.