



IMOU IPC-F88FIP Knight Security Camera User Guide

[Home](#) » [imou](#) » IMOU IPC-F88FIP Knight Security Camera User Guide 

Contents

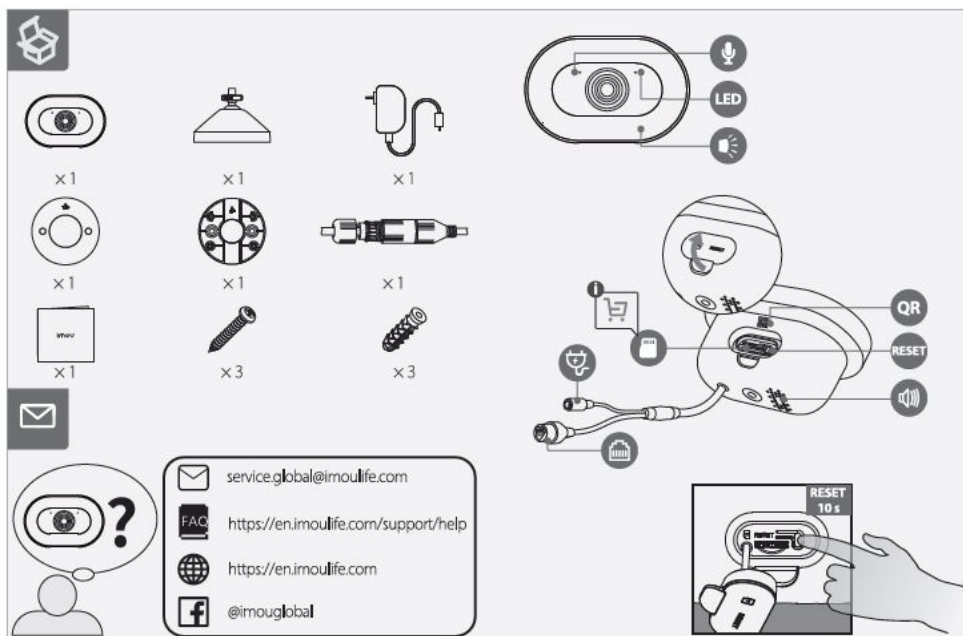
- [1 IMOU IPC-F88FIP Knight Security Camera](#)
- [2 Package Content And Parts Overview](#)
- [3 Power On the Camera](#)
- [4 Get the Imou Life App](#)
- [5 Set Up the Camera](#)
- [6 Install the Camera](#)
- [7 Documents / Resources](#)
- [8 Related Posts](#)



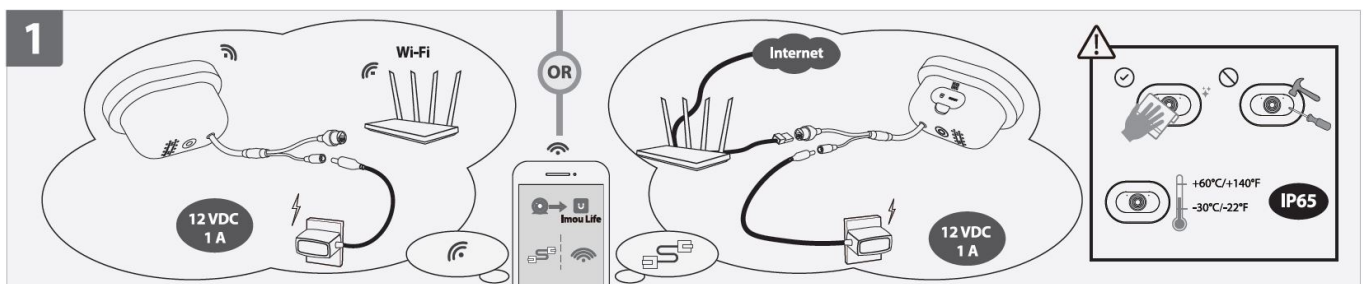
IMOU IPC-F88FIP Knight Security Camera



Package Content And Parts Overview

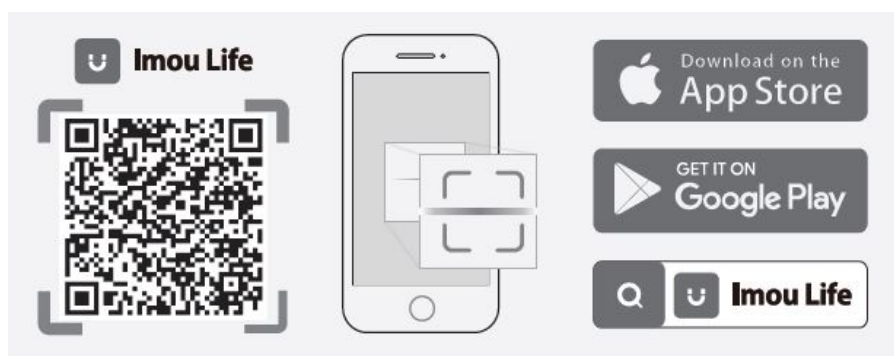


Power On the Camera



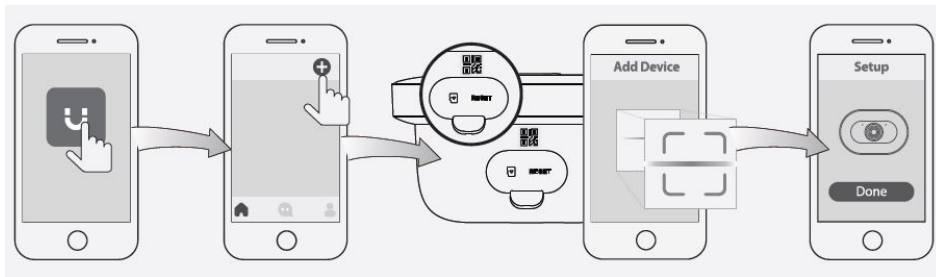
Connect the camera to power. You can choose wireless or wired network connection.

Get the Imou Life App



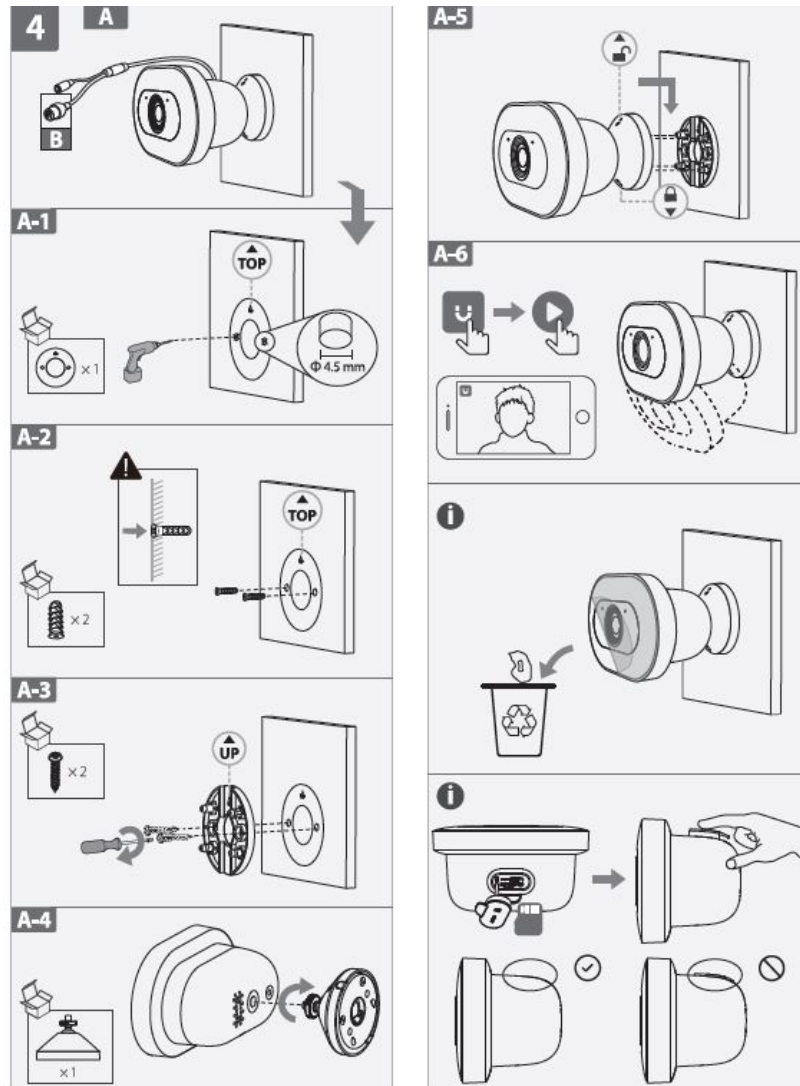
Scan the QR code on part 2 or search for Imou Life to download and install the app. Create an account and log in.

Set Up the Camera

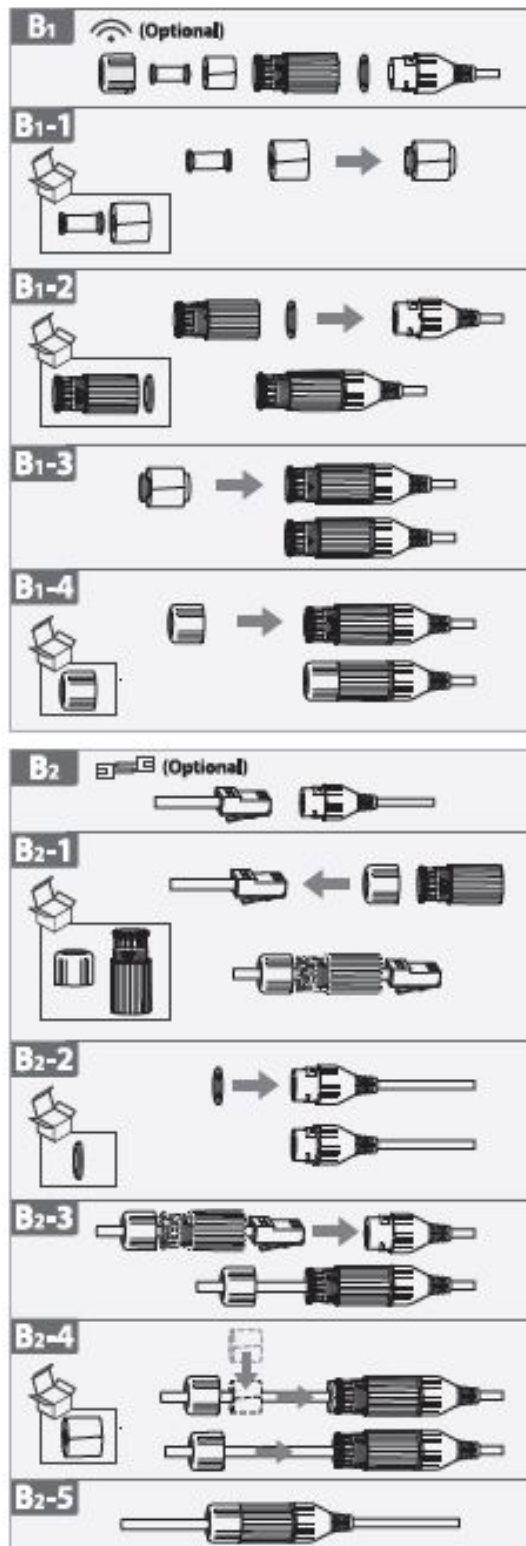


Scan the QR code on the body of the device or on the cover of this guide with the app, and then follow on-screen instructions to complete the setup.

Install the Camera



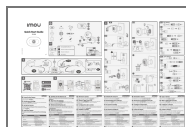
Make sure the mounting surface is strong enough to hold three times the weight of the camera.



In case you need to reset the camera press and hold the reset button for 10 s until the LED turns solid red.

LED Status	Device Status
Off	<ul style="list-style-type: none"> • Power off • LED turned off
Solid red	<ul style="list-style-type: none"> • Booting • Device malfunction
Flashing red	<ul style="list-style-type: none"> • Network disconnected • Failed to set up the device
Flashing green	Ready to set up the device
Solid green	Operating correctly
Flashing green and red	Updating firmware

Documents / Resources



[IMOU IPC-F88FIP Knight Security Camera](#) [pdf] User Guide

IPC-F88FIP, Knight Security Camera, IPC-F88FIP Knight Security Camera, IPC-F88FIP-V2-02 80B