

IMOU IPC-F5XMI Bullet Pro 3MP Security Camera User Guide

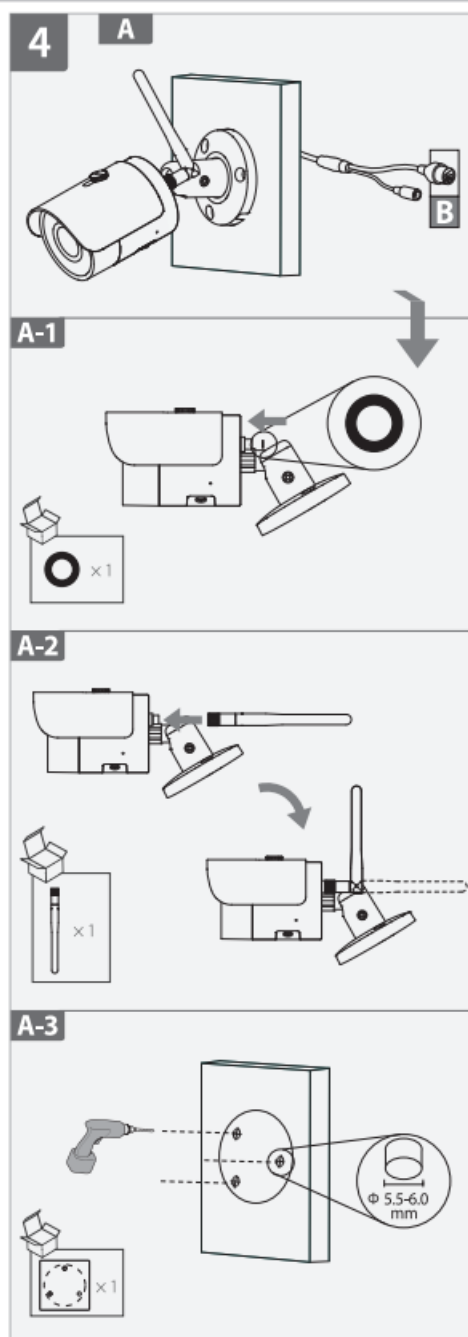
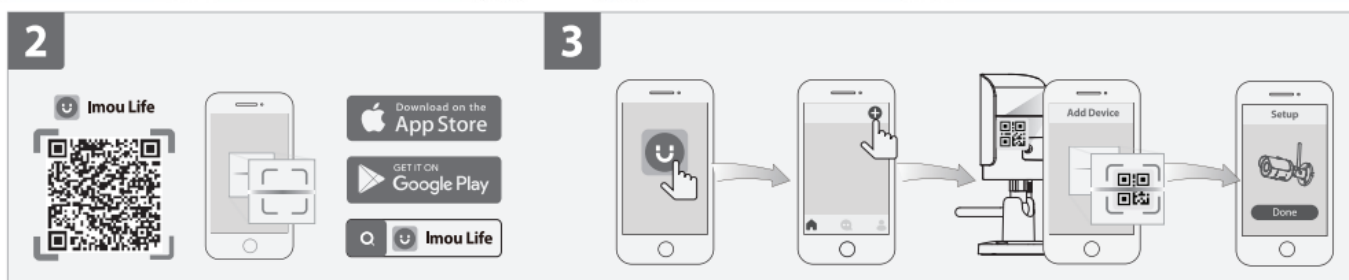
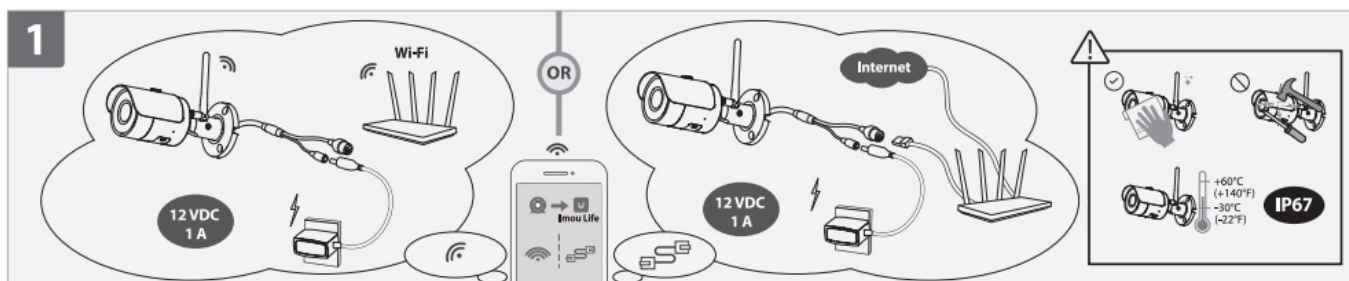
[Home](#) » [imou](#) » IMOU IPC-F5XMI Bullet Pro 3MP Security Camera User Guide 

Contents

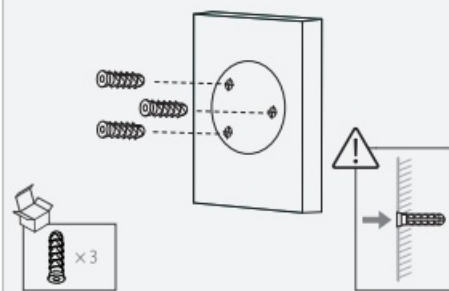
- [1 IMOU IPC-F5XMI Bullet Pro 3MP Security Camera](#)
- [2 WHAT IS IN THE BOX](#)
- [3 INSTALLATION](#)
- [4 Legal and Regulatory Information](#)
- [5 Regulatory Information](#)
- [6 Declaration of Conformity CE](#)
- [7 About the Manual](#)
- [8 Support](#)
- [9 Contact Information](#)
- [10 Important Safeguards and Warnings](#)
- [11 Safety Instructions](#)
- [12 Safety Requirement](#)
- [13 Battery](#)
- [14 Documents / Resources](#)
 - [14.1 References](#)
- [15 Related Posts](#)



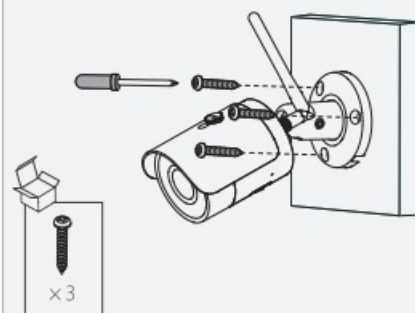
IMOU IPC-F5XMI Bullet Pro 3MP Security Camera



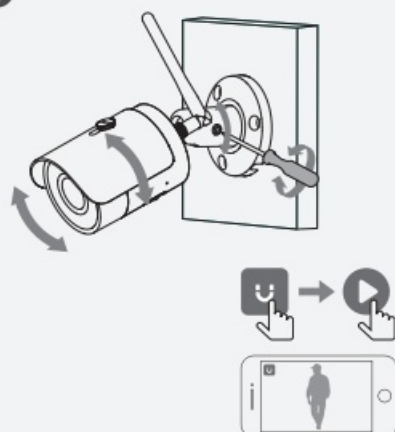
A-4

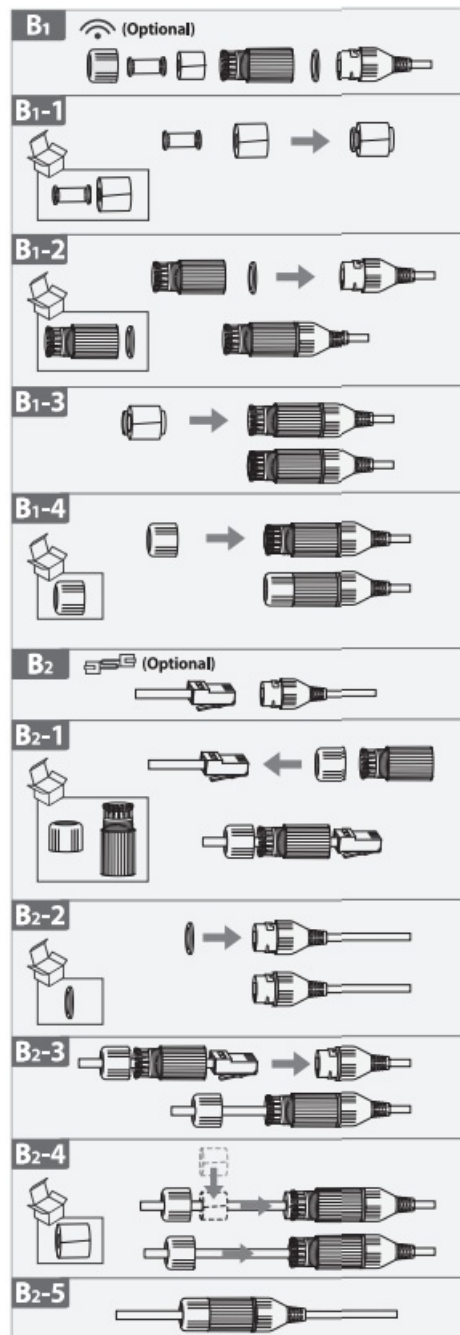


A-5



i





1. Power On the Camera

Connect the camera to power. You can choose wireless or wired network connection (see part 1).

2. Get the Imou Life App

Scan the QR code on part 2 or search for "Imou Life" to download and install the app. Create an account and log in.

3. Set Up the Camera

Scan the QR code on the body of the device or on the cover of this guide with the app, and then follow on-screen instructions to complete the setup (see part 3).

4. Install the Camera

Make sure the mounting surface is strong enough to hold three times the weight of the camera. For detailed installation process, please see part 4.

Green	Flashing	Ready to set up the device
	Solid	Working properly
Red	Flashing	Network disconnected
		Failed to set up the device
	Solid	Booting
		Device malfunction
Green & Red	Alternating	Updating firmware
Off	/	Power off
		LED turned off

0 If you need to reset the camera, press and hold the reset button for 10 s. The LED turns solid red when the camera is booting.

Legal and Regulatory Information

Legal Considerations

This product can be regulated by laws that vary from country to country. Check the laws in your local region before using it.

Disclaimer

Every care has been taken in the preparation of this document. Please contact us through the following contact information of any inaccuracies or omissions. Imou shall not be held responsible for any technical or typographical errors and reserves the right to make changes to the product and manuals without prior notice. Imou makes no warranty of any kind with regard to the material contained within this document, including, but not limited to, the implied warranties of merchantability and fitness for a particular purpose. Imou shall not be liable or responsible for incidental or consequential damages in connection with the furnishing, performance or use of this material. This product is only to be used for its intended purpose.

Intellectual Property Rights

Imou retains all intellectual property rights relating to technology embodied in the product described in this document.

Equipment Modifications

This equipment must be installed and used in strict accordance with the instructions given in the user documentation. This equipment contains no user-serviceable components. Unauthorized equipment changes or modifications will invalidate all applicable regulatory certifications and approvals.

Trademark Acknowledgments

is the registered trademark or trademark application of Imou in various jurisdictions. All other company names and products are trademarks or registered trademarks of their respective companies.

Regulatory Information

European Directives Compliance

This product complies with the applicable CE marking directives and standards:

- Low Voltage (LVD) Directive 2014/35/EU.

- Electromagnetic Compatibility (EMC) Directive 2014/30/EU.
- Restrictions of Hazardous Substances (RoHS) Directive 2011/65/EU and its amending
- Directive (EU) 2015/863.

A copy of the original declaration of conformity may be obtained from Imou.

The most up to date copy of the signed EU Declaration of Conformity (DoC) can be downloaded from:

<https://en.imoulife.com/support/downloadCenter/eudoc>.

CE-Electromagnetic Compatibility (EMC)

This digital equipment is compliant with Class B according to EN 55032.

CE-Safety

This product complies with IEC/EN/UL 62368-1, Audio/video, information and communication technology equipment – Part 1: Safety requirements and IEC/UL 60950-1: Safety of Information Technology Equipment.

Declaration of Conformity CE

(Only for the product has RF function)

Hereby, Imou declares that the radio equipment is compliant with Radio Equipment Directive (RED) 2014/53/EU.

The full text of the EU declaration of conformity is available at the following internet address:

<https://en.imoulife.com/support/downloadCenter/eudoc>.

Privacy Protection Notice

As the device user or possible data controller, you might collect personal data of others such as face, fingerprints, car plate number, Email address, phone number, GPS and so on. You need to be in compliance with the local privacy protection laws and regulations to protect the legitimate rights and interests of other people by implementing measures, including but not limited to: providing clear and visible identification to inform data subject the existence of surveillance area and providing related contact.

About the Manual

- The manual is for reference only. If there is inconsistency between the manual and the actual product, the actual product shall prevail.
- We are not liable for any loss caused by the operations that do not comply with the manual.
- The manual would be updated according to the latest laws and regulations of related jurisdictions. For detailed information, refer to the paper manual, CD-ROM, QR code or our official website. If there is inconsistency between paper manual and the electronic version, the electronic version shall prevail.
- All the designs and software are subject to change without prior written notice. The product updates might cause some differences between the actual product and the manual. Please contact the customer service for the latest program and supplementary documentation.
- There still might be deviation in technical data, functions and operations description, or errors in print. If there is any doubt or dispute, we reserve the right of final explanation.
- Upgrade the reader software or try other mainstream reader software if the manual (in PDF format) cannot be opened.
- All trademarks, registered trademarks and the company names in the manual are the properties of their respective owners.

-
- Please visit our website, contact the supplier or customer service if there is any problem occurring when using the device.
- If there is any uncertainty or controversy, we reserve the right of final explanation.

Support

Should you require any technical assistance, please contact your Imou distributor. If your questions cannot be answered immediately, your distributor will forward your queries through the appropriate channels to ensure a rapid response. If you are connected to the Internet, you can:

- Download user documentation and software updates.
- Search by product, category, or phrase.
- Report problems to Imou support staff by logging in to your private support area.
- Chat with Imou support staff.
- GET WIFI FREQUENCY & MAX EIRP FROM IMOUE SUPPORT:
<https://en.imoulife.com/support/productManual/dataSheet> (Only for the product has RF function).
- Visit Imou Support at <https://en.imoulife.com/support/help>.

Contact Information

- **Manufacturer:** Hangzhou Huacheng Network Technology Co.,Ltd.
- **Address:** Room 412, Building 2, No.2930, Nanhuan Road, Binjiang District, Hangzhou, China
- **Postcode:** 310052
- **Tel:** +86-571-87791623
- **Fax:** +86-571-87791623
- **Email:** service.global@imoulife.com
- **Website:** <https://en.imoulife.com>
- **Authorised representative established within the EU** Imou Network Technology Netherlands B.V.
- **Address:** Louis Braillelaan 80, 2719EK Zoetermeer, the Netherlands

Important Safeguards and Warnings

This Chapter describes the contents covering proper handling of the device, hazard prevention, and prevention of property damage. Read these contents carefully before using the device, comply with them when using, and keep it well for future reference.

Safety Instructions

The following categorized signal words with defined meaning might appear in the manual

Signal Words	Meaning					
DANGER	Indicates a high potential hazard which, if not avoided, will result in death or serious injury.					
WARNING	Indicates a medium or low potential hazard which, if not avoided, could result in slight or moderate injury.					
CAUTION	Indicates a potential risk which, if not avoided, could result in property damage, data loss, lower performance, or unpredictable result.					
TIPS	Provides methods to help you solve a problem or save you time.					
NOTE	Provides additional supplement to the text.	information	as	the	emphasis	and

Safety Requirement

- Abide by local electrical safety standards to ensure that the voltage is stable and complies with the power supply requirement of the device.
- Transport, use, and store the device under the allowed humidity and temperature conditions.
Refer to the corresponding technical specifications of device for specific working temperature and humidity.
- Do not place the device in a location exposed to dampness, dust, extreme hot or cold, strong electronic radiation, or unstable lighting conditions.
- Do not install the device in a place near the heat source, such as radiator, heater, furnace, or other heat generating device to avoid fire.
- Prevent liquid from flowing into the device to avoid damage to internal components.
- Install the device horizontally or install on the stable place to prevent it from falling.
- Install the device in a well-ventilated place, and do not block the ventilation of the device.
- Do not disassemble the device arbitrarily.
- Avoid heavy stress, violent vibration, and soaking during transportation, storage, and installation.
Complete package is necessary during the transportation.
- Use the factory package or the equivalent for transportation.

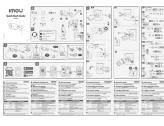
Battery

Low battery power affects the operation of the RTC, causing it to reset at every power-up. When the battery needs replacing, a log message will appear in the product's server report. For more information about the server report, see the product's setup pages or contact Imou support.

WARNING

- Risk of explosion if the battery is incorrectly replaced.
- Replace only with an identical battery or a battery which is recommended by Imou.
- Dispose of used batteries according to local regulations or the battery manufacturer's instructions.

Documents / Resources

	<p>IMOU IPC-F5XMI Bullet Pro 3MP Security Camera [pdf] User Guide IPC-F5XMI, IPCF5XMI, 2AVYF-IPC-F5XMI, 2AVYFIPCF5XMI, IPC-F5XMI Bullet Pro 3MP Security Camera, IPC-F5XMI, Bullet Pro 3MP Security Camera, 3MP Security Camera, Security Camera, Camera</p>
---	--

References

- [Imou | Enjoy Smart Life](#)
- [policy](#)
- [policy](#)
- [Support](#)
- [Product Manual](#)
- [Notices - Dahua Technology USA Inc](#)