




Imou IPC-F42P Bullet 2C IP Camera User Guide

[Home](#) » [imou](#) » Imou IPC-F42P Bullet 2C IP Camera User Guide 

Contents

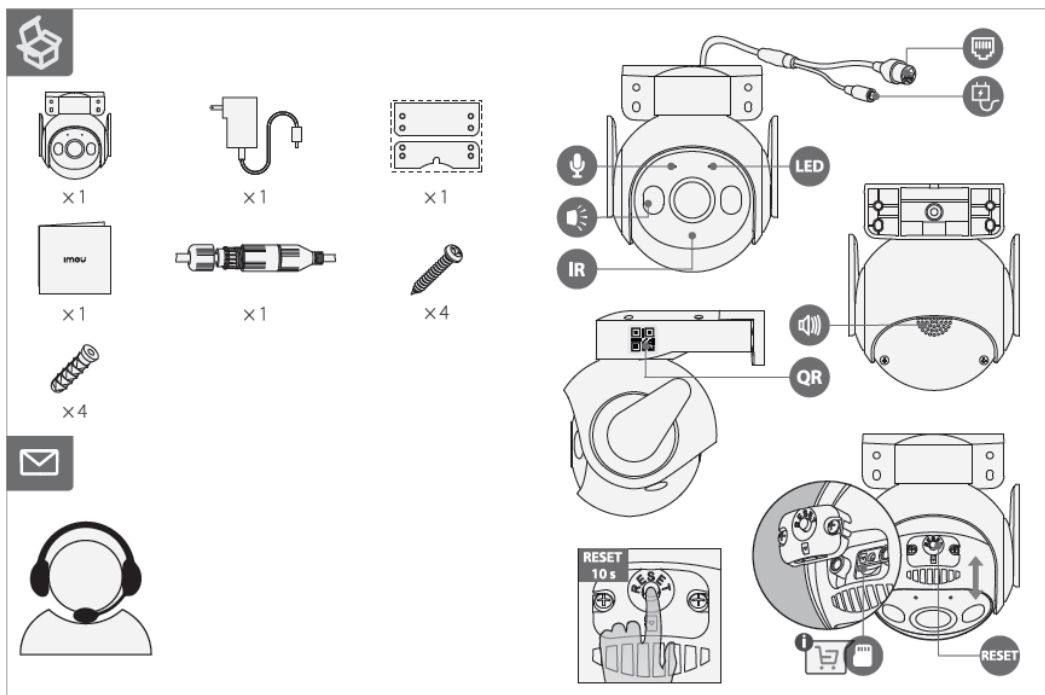
- [1 Imou IPC-F42P Bullet 2C IP Camera](#)
- [2 INTRODUCTIONS](#)
- [3 Documents / Resources](#)
- [4 Related Posts](#)





imou

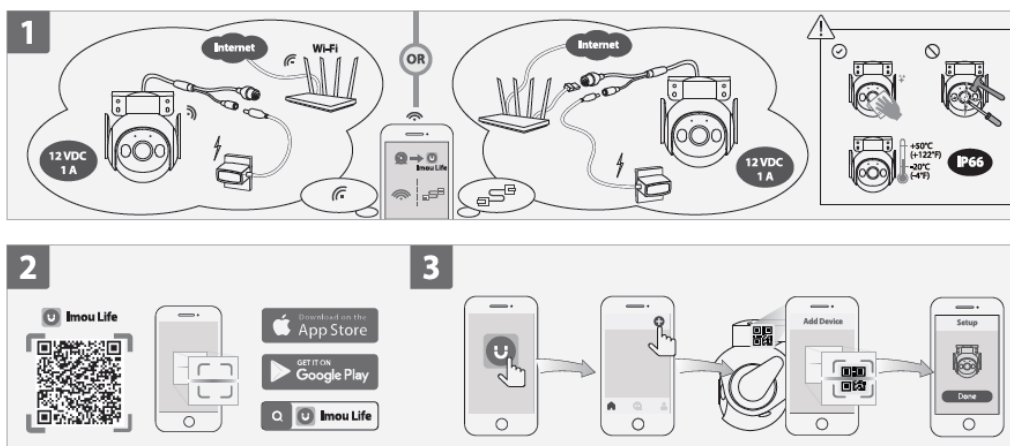
Imou IPC-F42P Bullet 2C IP Camera

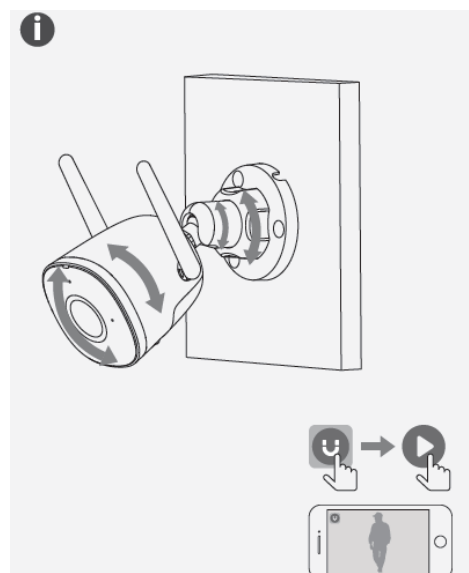
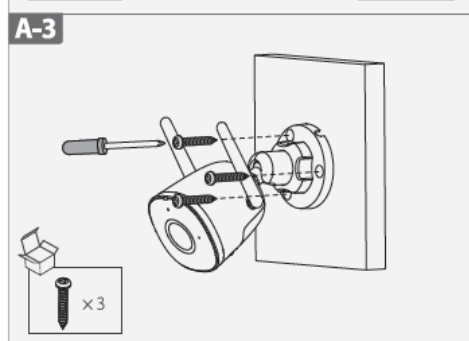
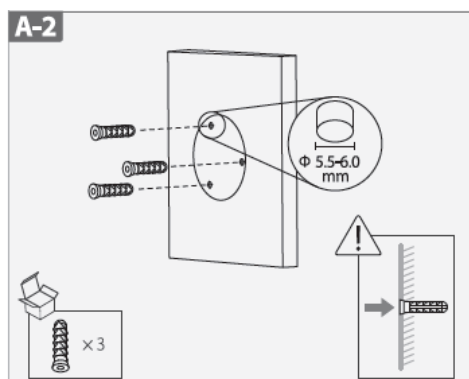
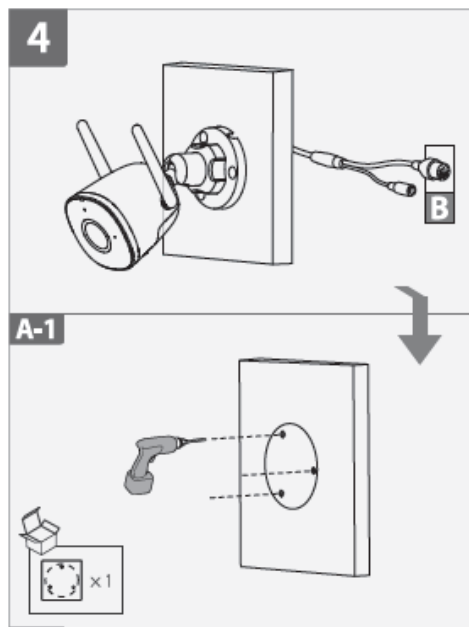


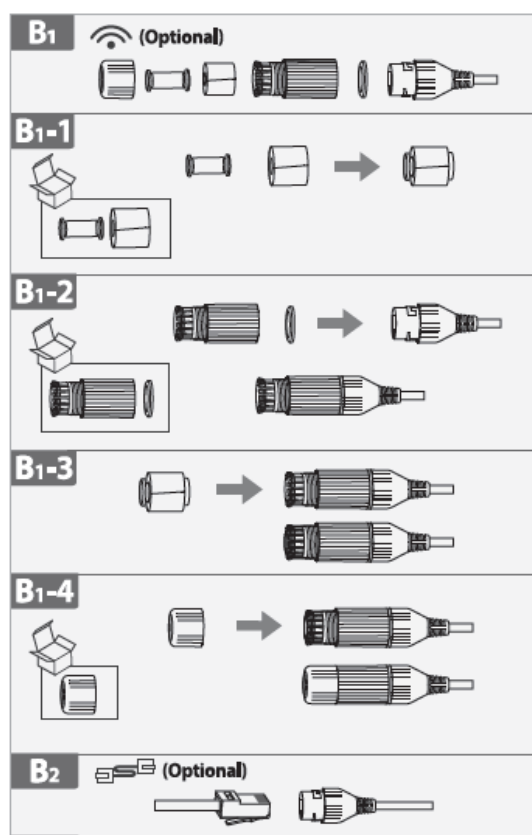
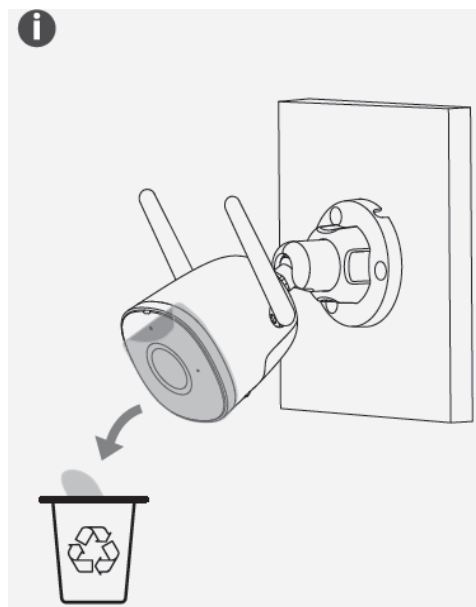
INTRODUCTIONS

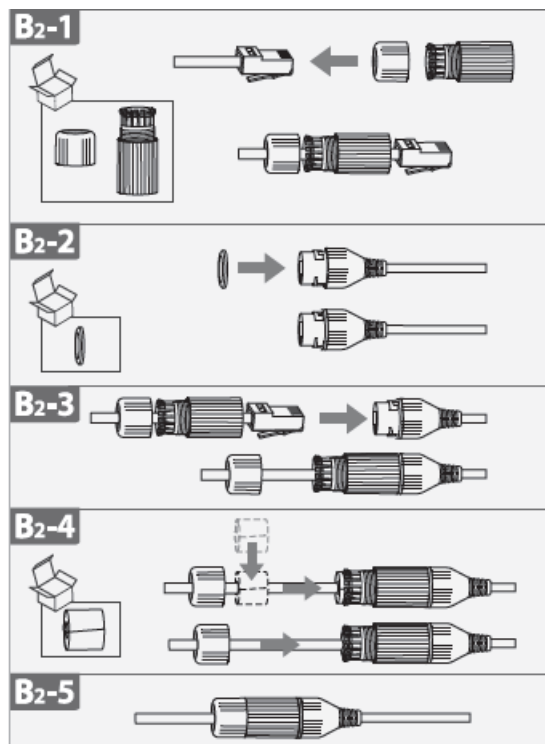


-  service.global@imoulife.com
-  <https://en.imoulife.com/support/help/faq>
-  <https://en.imoulife.com>
-  @imouglobaI









1. Power On the Camera

Connect the camera to power. You can choose wireless or wired network connection (see part 1).

2. Get the Imou Life App

Scan the QR code on part 2 or search for “Imou Life” to download and install the app. Create an account and log in.

3. Set Up the Camera

Scan the QR code on the body of the device or on the cover of this guide with the app, and then follow on-screen instructions to complete the setup (see part 3).

4. Install the Camera

Make sure the mounting surface is strong enough to hold three times the weight of the camera. For detailed installation process, please see part 4.

LED Status		Device Status
Green	Flashing	Ready to set up the device
	Solid	Working properly
Red	Flashing	Network disconnected
		Failed to set up the device
	Solid	Booting
		Device malfunction
Green & Red	Alternating	Updating firmware
Off	/	Power off
		LED turned off

The LED turns solid red when the camera is booting.

Documents / Resources



[Imou IPC-F42P Bullet 2C IP Camera](#) [pdf] User Guide

IPC-F42P Bullet 2C IP Camera, IPC-F42P, Bullet 2C IP Camera, IP Camera, Camera