

imou IPC-F22P Bullet 2C Security Camera



## imou IPC-F22P Bullet 2C Security Camera User Guide

[Home](#) » [imou](#) » imou IPC-F22P Bullet 2C Security Camera User Guide 

### Contents

- [1 imou IPC-F22P Bullet 2C Security Camera](#)
- [2 Hardware tool](#)
- [3 Mounting](#)
- [4 Documents / Resources](#)
  - [4.1 References](#)
- [5 Related Posts](#)

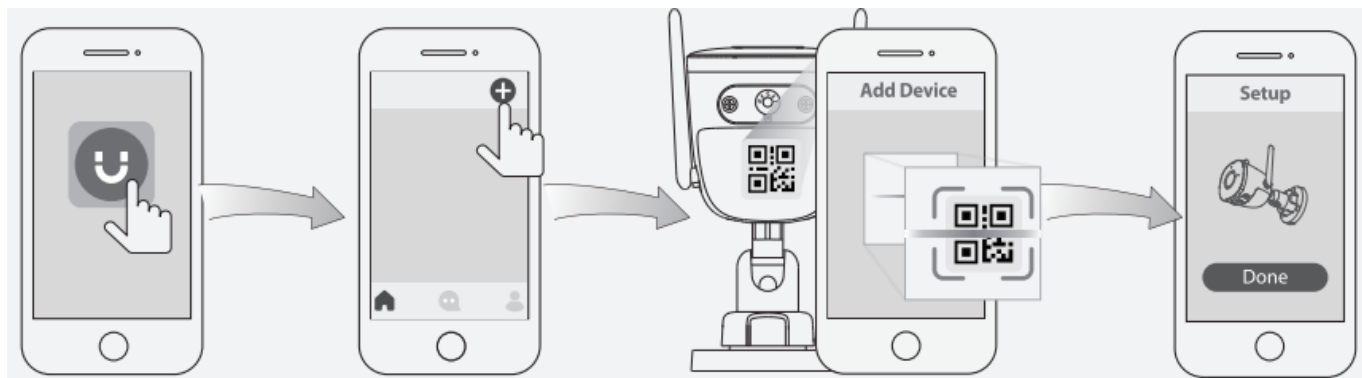
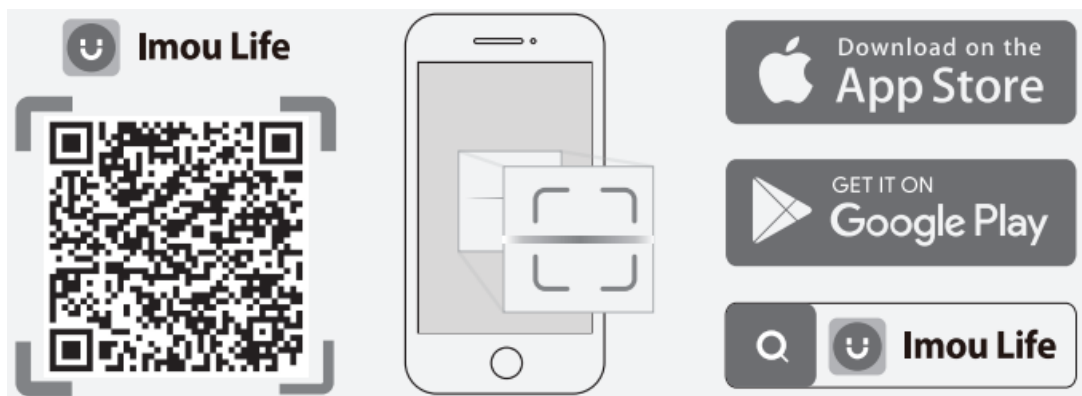
# imou

### imou IPC-F22P Bullet 2C Security Camera

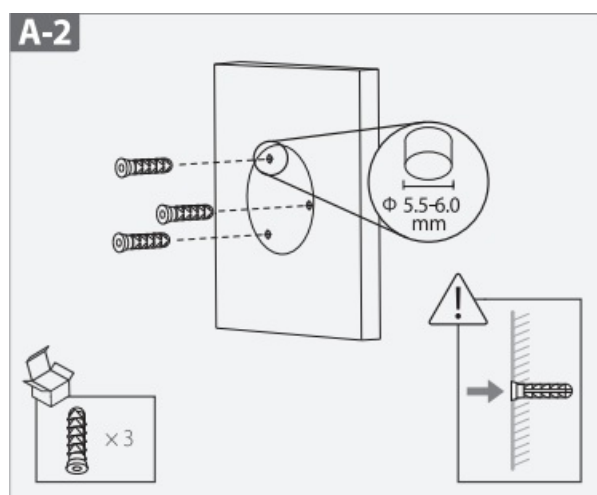
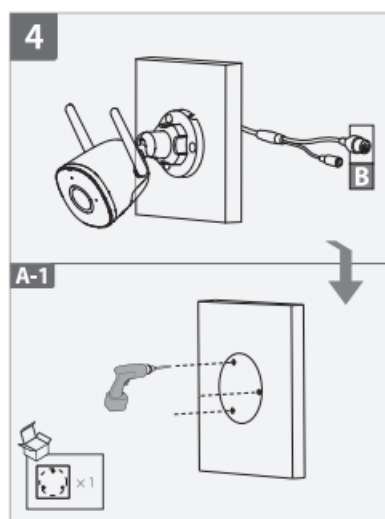


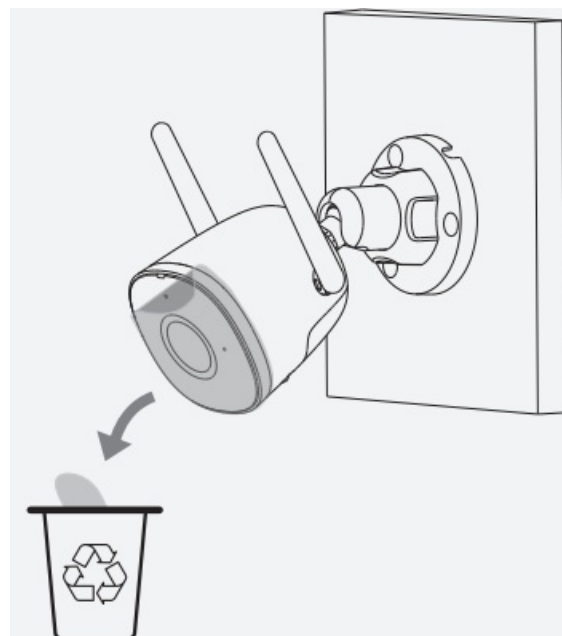
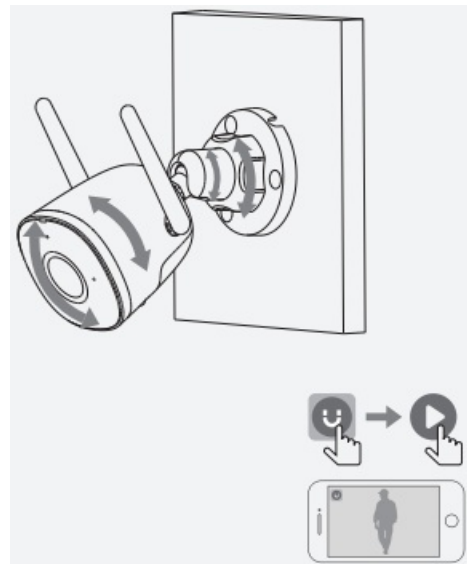
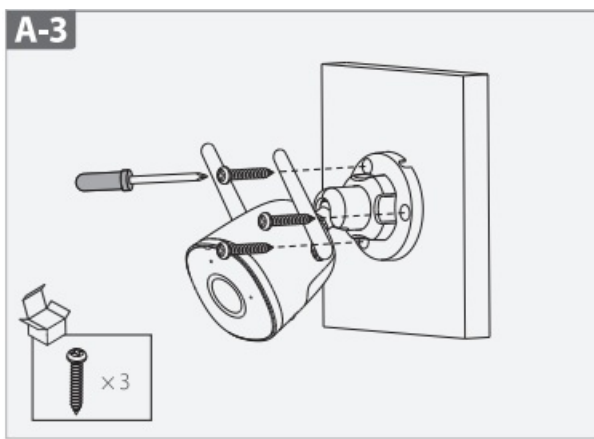
### Hardware tool

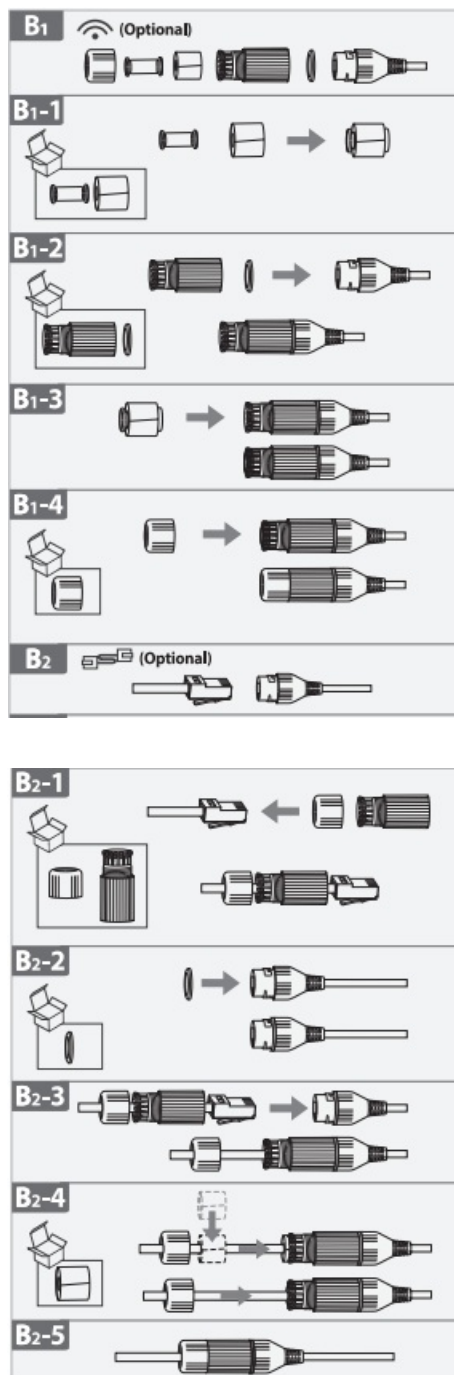




## Mounting







### Power On the Camera

Connect the camera to power. You can choose wireless or wired network connection (see part 1).

### Get the Imou Life App

Scan the QR code on part 2 or search for "Imou Life" to download and install the app. Create an account and log in.

### Set Up the Camera

Scan the QR code on the body of the device or on the cover of this guide with the app, and then follow on-screen instructions to complete the setup (see part 3).

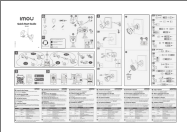
### Install the Camera

Make sure the mounting surface is strong enough to hold three times the weight of the camera. For detailed installation process, please see part 4.

LED Status		Device Status
Green	Flashing	Ready to set up the device
	Solid	Working properly
Red	Flashing	Network disconnected
		Failed to set up the device
	Solid	Booting
		Device malfunction
Green & Red	Alternating	Updating firmware
Off	/	Power off
		LED turned off

- If you need to reset the camera, press and hold the reset button for 10 s. The LED turns solid red when the camera is booting.

## Documents / Resources

	<p><a href="#">imou IPC-F22P Bullet 2C Security Camera</a> [pdf] User Guide  IPC-F22P Bullet 2C Security Camera, IPC-F22P, Bullet 2C Security Camera, Security Camera</p>
--	---

## References

- [User Manual](#)

[Manuals+](#), [Privacy Policy](#)

This website is an independent publication and is neither affiliated with nor endorsed by any of the trademark owners. The "Bluetooth®" word mark and logos are registered trademarks owned by Bluetooth SIG, Inc. The "Wi-Fi®" word mark and logos are registered trademarks owned by the Wi-Fi Alliance. Any use of these marks on this website does not imply any affiliation with or endorsement.