

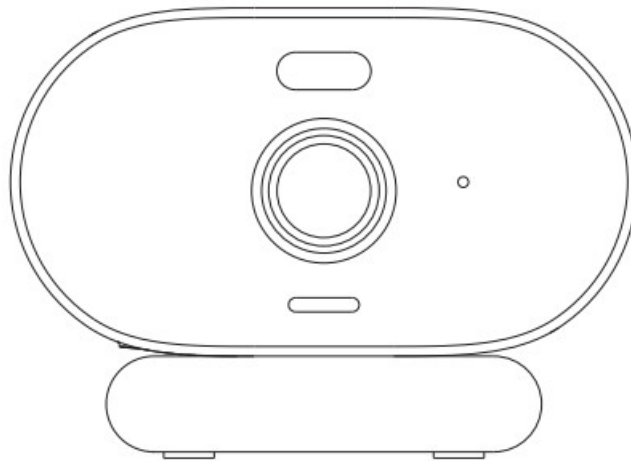


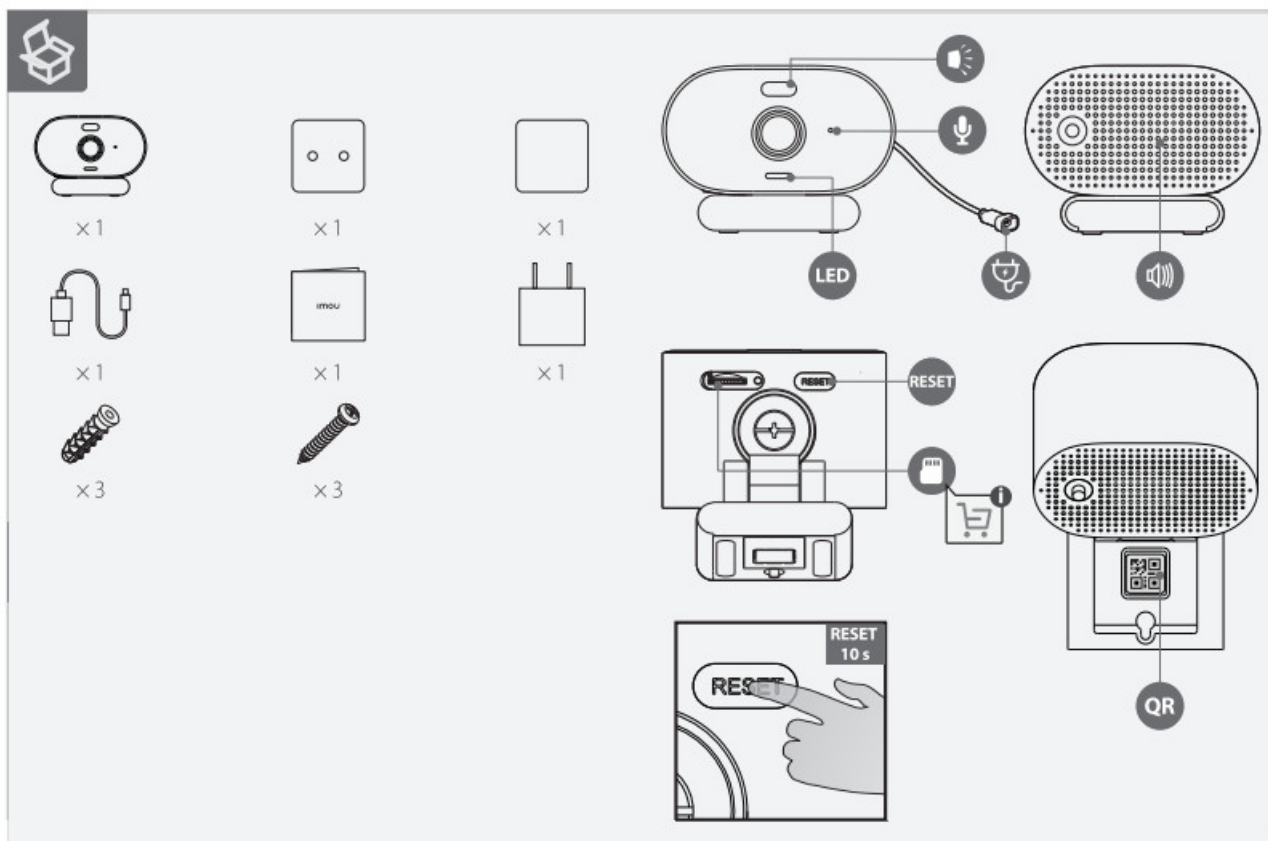
Imou IPC-C22FP Versa WiFi Camera User Guide


[Home](#) » [imou](#) » Imou IPC-C22FP Versa WiFi Camera User Guide 





IPC-C22FP Versa WiFi Camera User Guide









 service.global@imoulife.com

 <https://en.imoulife.com/support/help>

 <https://en.imoulife.com>

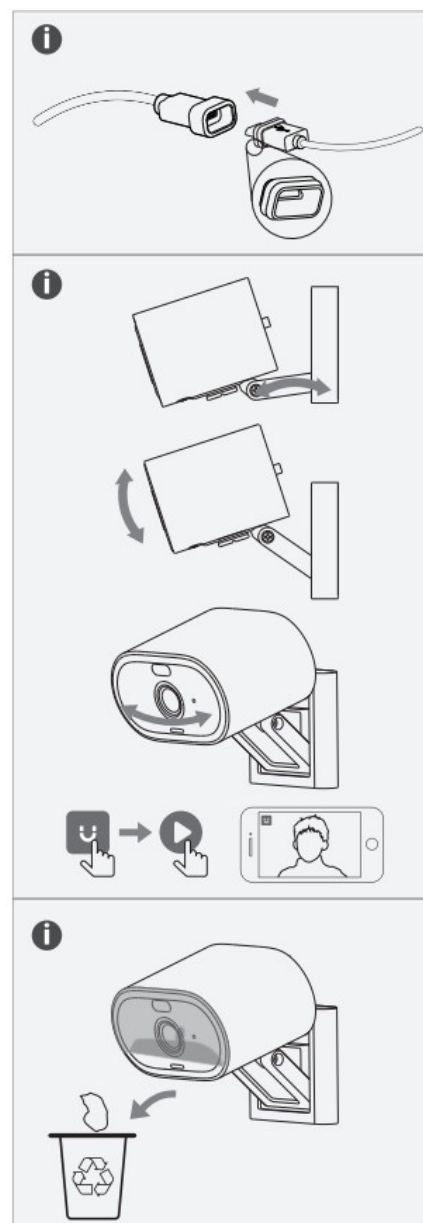
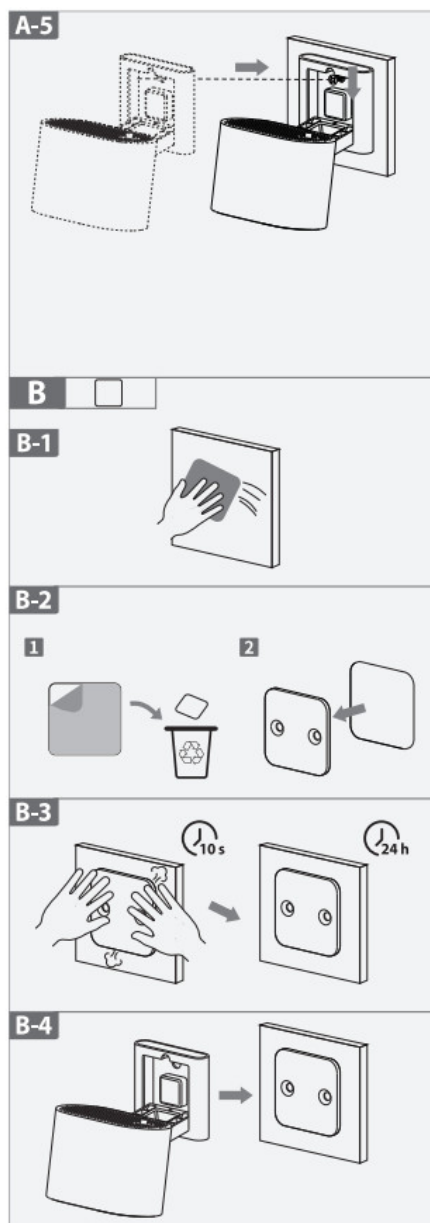
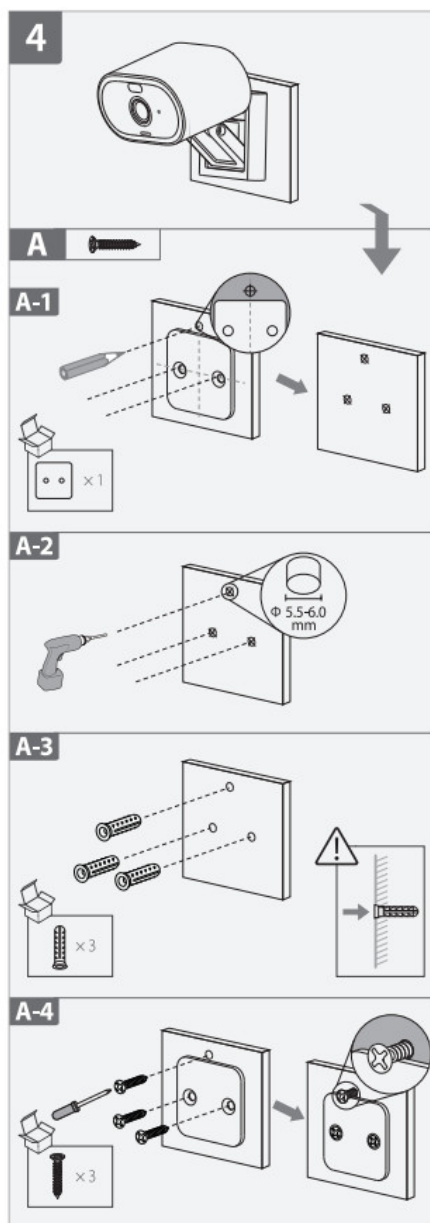
 @imouglobal

1

2

3

<http://mobile.easy4ipcloud.com/imou/detect.html>



Contents

- [1 Power On the Camera](#)
- [2 Get the Imou Life App](#)
- [3 Set Up the Camera](#)
- [4 Install the Camera](#)
- [5 Documents / Resources](#)
- [6 Related Posts](#)

Power On the Camera

Connect the camera to power (see part 1).

Get the Imou Life App

Scan the QR code on part 2 or search for “Imou Life” to download and install the app. Create an account and log in.

Set Up the Camera

Scan the QR code on the body of the device or on the cover of this guide with the app, and then follow on-screen instructions to complete the setup (see part 3).

Install the Camera


Make sure the mounting surface is strong enough to hold three times the weight of the camera. For a detailed installation process, please see part 4.

LED Status	Device Status
Off	<ul style="list-style-type: none">• Poweroff• LED turned off
Solid red	<ul style="list-style-type: none">• Booting• Device malfunction
Flashing red	<ul style="list-style-type: none">• Network disconnected• Failed to set up the device
Flashing green	Ready to set up the device
Solid green	Operating correctly
Flashing green and red	Updating firmware



In case you need to reset the camera, press and hold the reset button for 10 s until the LED turns solid red.

Documents / Resources

	<p>Imou IPC-C22FP Versa WiFi Camera [pdf] User Guide IPC-C22FP, Versa WiFi Camera, WiFi Camera, Versa Camera, IPC-C22FP, Camera</p>
---	---