



Imou IPC-B32N-V2 IP camera User Manual

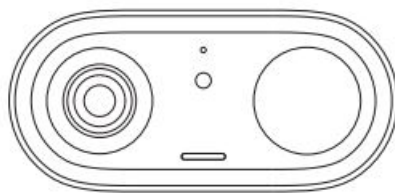
[Home](#) » [imou](#) » Imou IPC-B32N-V2 IP camera User Manual

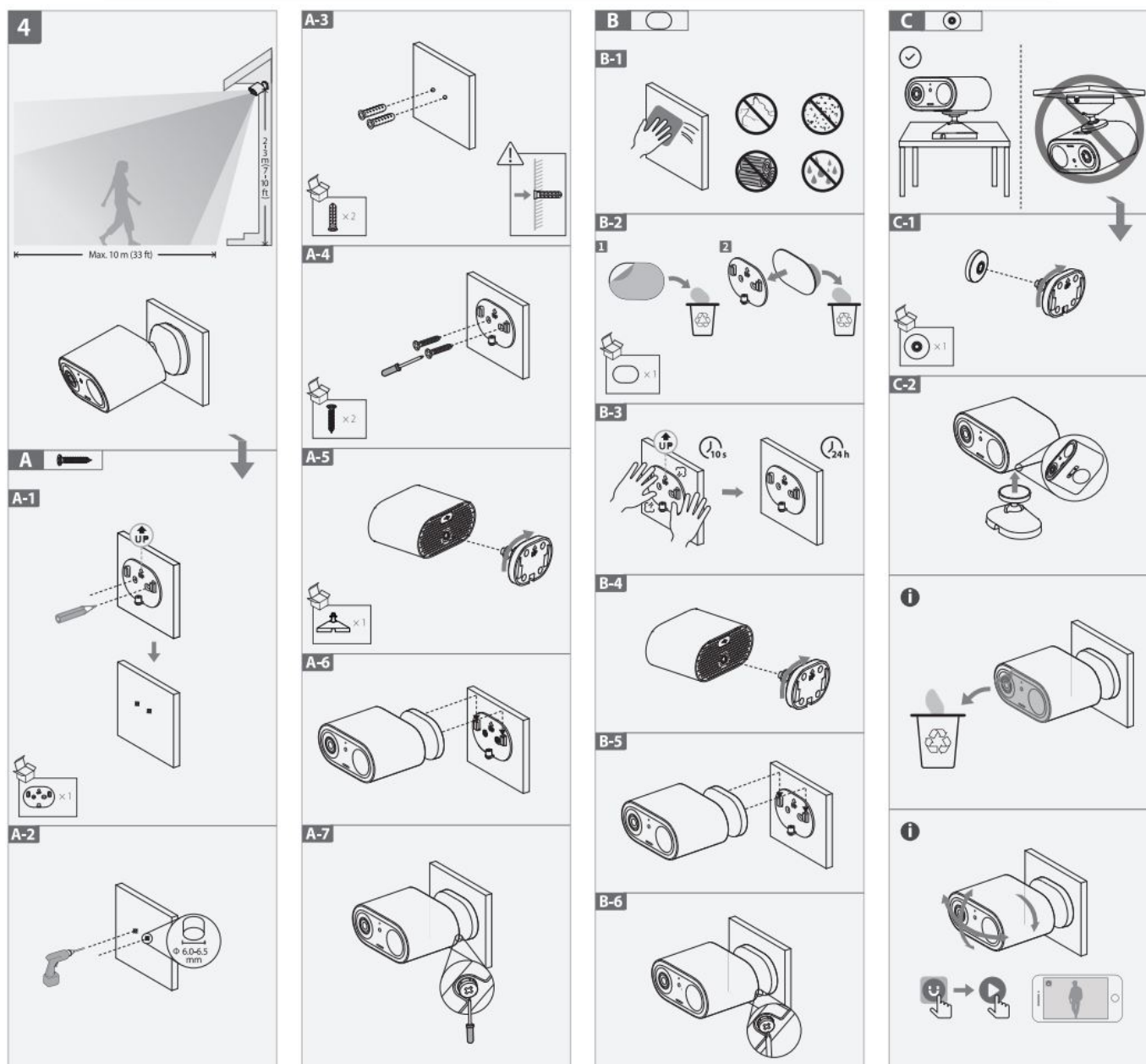
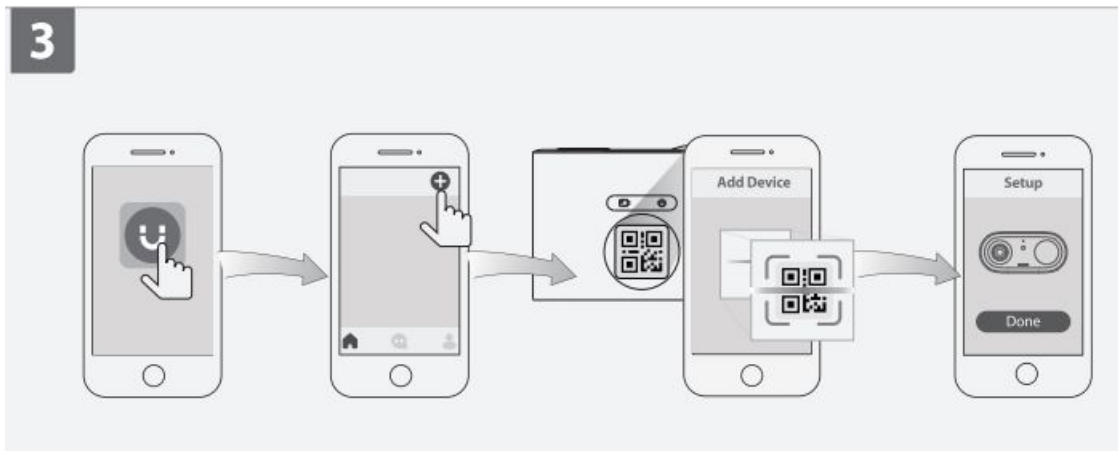
Imou IPC-B32N-V2 IP camera User Manual

imou

Quick Start Guide

V1.0.0





Hold down the power button for 3 s to turn on the camera. The LED lights up in green when the camera is booting. If the LED fishes red twice and then turns off, the camera is out of battery. Please charge it with a SVDC 2A power adapter or a solar panel (each sold separately).

2. Get the Imou Life App (Part 2)

Scan the QR code on part 2 or search for “Imou Life” to download and install the app. Create an account and log in.

3. Set Up the Camera (Part 3)

Scan the QR code on the body of the device or on the cover of this guide with the app, and then follow on-screen instructions to complete the setup.

4. Install the Camera (Part4)

Fully charge the camera before installation. Make sure the mounting surface is strong enough to hold three times the weight of the camera.

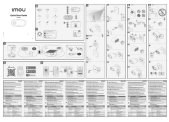
Button	Description
	Power on/off the camera Press and hold  .
	Enter/exit AP mode Double press  . The LED slowly blinks blue & red in AP mode.
	Enter/exit Vlog mode Press  . The LED slowly blinks blue & red in Vlog mode and the camera starts recording continuously.  Please add the camera to Imou Life APP first.
	Reset the camera Press and hold  for 5 s.

LED Status		Device Status
Blue	Flashing slowly	Charging
	Solid	Fully charged
Green	Flashing slowly	Ready to set up the device
	Flashing fast	Connecting to the router
	Solid	Booting
		Working properly
Red	Flashing slowly	Disconnected from the router
	Solid	Device malfunction
Red & Blue	Alternating	In VLOG mode
		Device hotspot turned on
Red & Green	Alternating	Updating firmware (keep battery enough)

Contents [[hide](#)]

[1 Documents / Resources](#)

[2 Related Posts](#)



[Imou IPC-B32N-V2 IP camera](#) [pdf] User Manual
IPC-B32N-V2