

imou Cue 2 Cue2 Wifi Camera Cheap Wifi Camera



imou Cue 2 Cue2 Wifi Camera Cheap Wifi Camera User Guide

[Home](#) » [imou](#) » imou Cue 2 Cue2 Wifi Camera Cheap Wifi Camera User Guide 

Contents

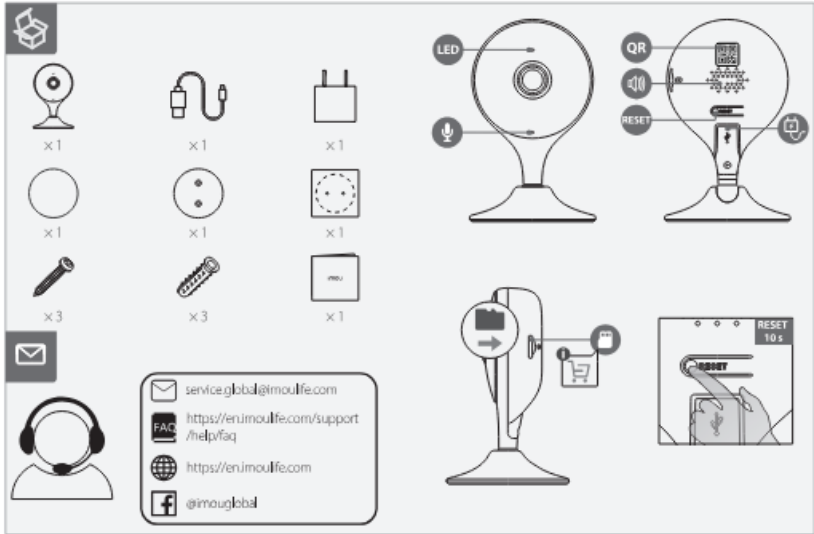
- [1 imou Cue 2 Cue2 Wifi Camera Cheap Wifi Camera](#)
- [2 WHAT INBOX](#)
- [3 Power On the Camera](#)
- [4 Get the Imou Life App](#)
- [5 Set Up the Camera](#)
- [6 Install the Camera](#)
- [7 LED Device Status](#)
- [8 Documents / Resources](#)
 - [8.1 References](#)

imou

imou Cue 2 Cue2 Wifi Camera Cheap Wifi Camera



WHAT INBOX

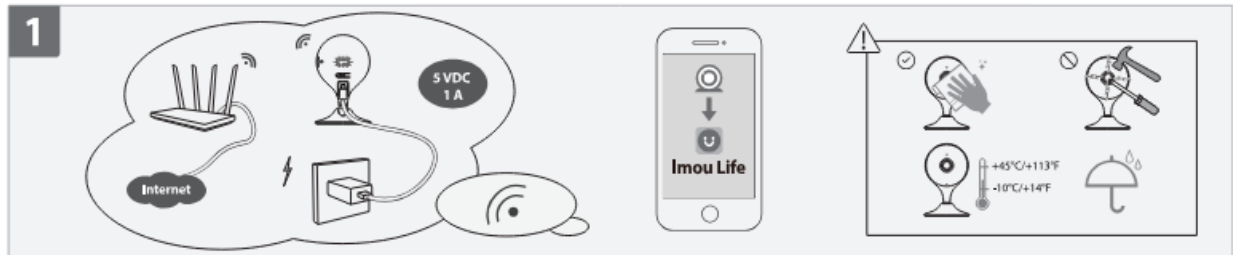


- service.global@imoulife.com.
- <https://en.imoulife.com/support/help/faq>.

- <https://en.imoulife.com>.
- @imouglobal

Power On the Camera

- Connect the camera to power (see part 1).



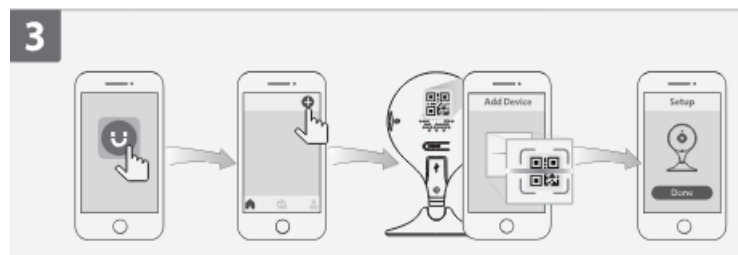
Get the Imou Life App

- Scan the QR code on part 2 or search for “Imou Life” to download and install the app.
- Create an account and log in.



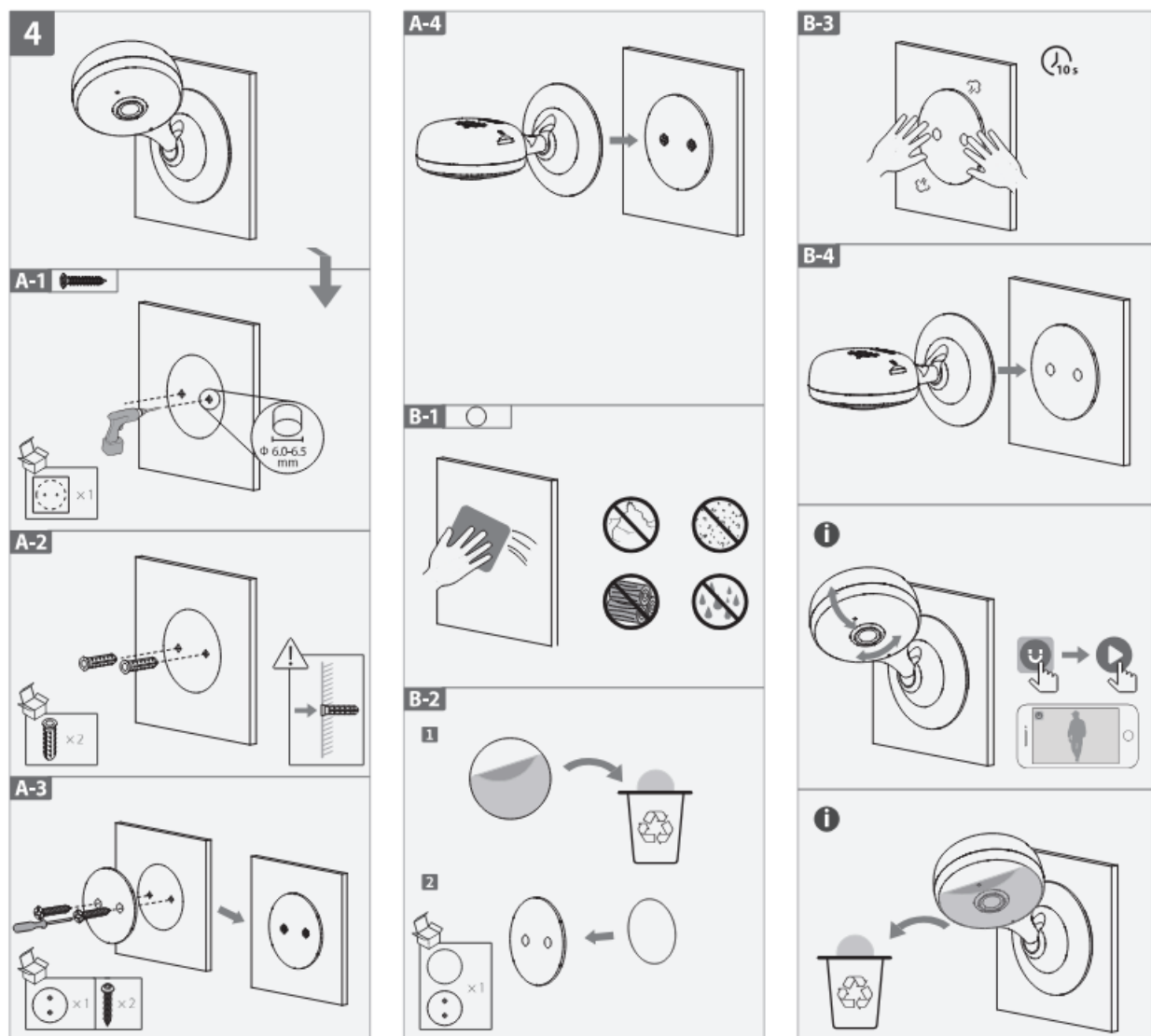
Set Up the Camera

- Scan the QR code on the body of the device or the cover of this guide with the app, and then follow on-screen instructions to complete the setup (see part 3).



Install the Camera

- Make sure the mounting surface is strong enough to hold three times the weight of the camera.
- For a detailed installation process, please see part 4.



LED Device Status

LED Status		Device Status
Green	Flashing	Ready to set up the device
	Solid	Working properly
Red	Flashing	Network disconnected
		Failed to set up the device
	Solid	Booting
Green & Red	Alternating	Device malfunction
Off	/	Updating firmware
		Power off
		LED turned off

- If you need to reset the camera, press and hold the reset button for 10 s.
- The LED turns solid red when the camera is booting.



[imou Cue 2 Cue2 Wifi Camera Cheap Wifi Camera](#) [pdf] User Guide
Cue 2 Cue2 Wifi Camera Cheap Wifi Camera, Cue 2, Cue2 Wifi Camera Cheap Wifi Camera,
Wifi Camera Cheap Wifi Camera, Camera Cheap Wifi Camera, Cheap Wifi Camera, Wifi
Camera

References

- [User Manual](#)

[Manuals+](#), [Privacy Policy](#)

This website is an independent publication and is neither affiliated with nor endorsed by any of the trademark owners. The "Bluetooth®" word mark and logos are registered trademarks owned by Bluetooth SIG, Inc. The "Wi-Fi®" word mark and logos are registered trademarks owned by the Wi-Fi Alliance. Any use of these marks on this website does not imply any affiliation with or endorsement.