

imou
Cell 3C Series
All in One
Security
Camera



Imou Cell 3C Series All in One Security Camera User Guide

[Home](#) » [imou](#) » Imou Cell 3C Series All in One Security Camera User Guide 

Contents

- [1 Imou Cell 3C Series All in One Security Camera](#)
- [2 WHATS INCULDE](#)
- [3 Power On the Camera](#)
- [4 Get the Imou Life App](#)
- [5 Set Up the Camera](#)
- [6 Install the Camera](#)
- [7 Documents / Resources](#)
 - [7.1 References](#)
- [8 Related Posts](#)

imou

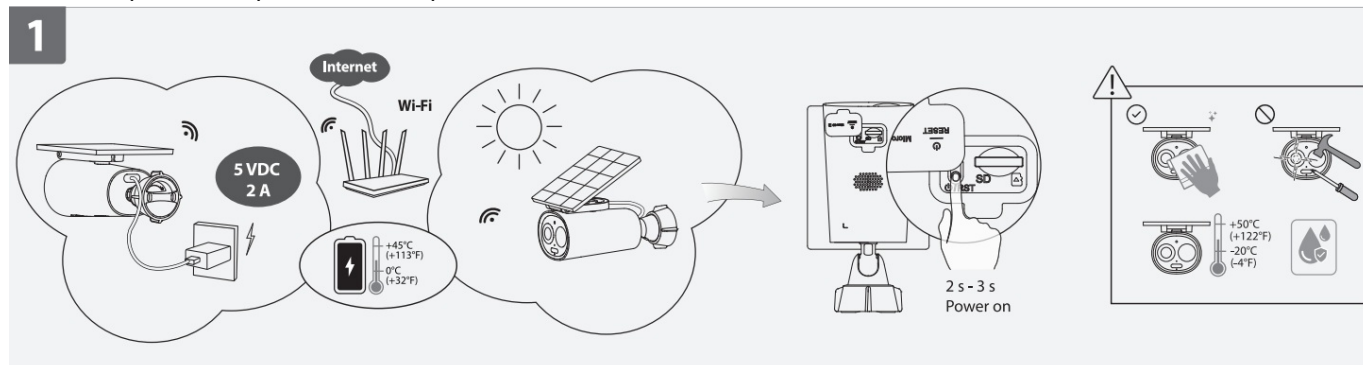
Imou Cell 3C Series All in One Security Camera



Power On the Camera

(Part 1)

Hold down the power button for 2-3 seconds to turn on the camera. The LED lights up in green when the camera is booting. If the LED flashes red twice and then turns off, the camera is out of battery. Please charge it with a 5VDC 2A power adapter or a solar panel.



Get the Imou Life App

(Part 2)

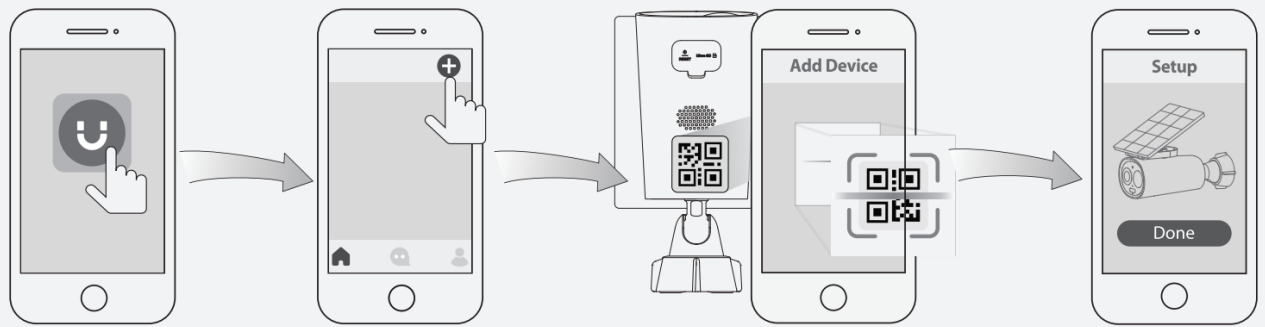
Scan the QR code on part 2 or search for “Imou Life” to download and install the app. Create an account and log in.



Set Up the Camera

(Part 3)

Scan the QR code on the body of the device or on the cover of this guide with the app, and then follow on-screen instructions to complete the setup.

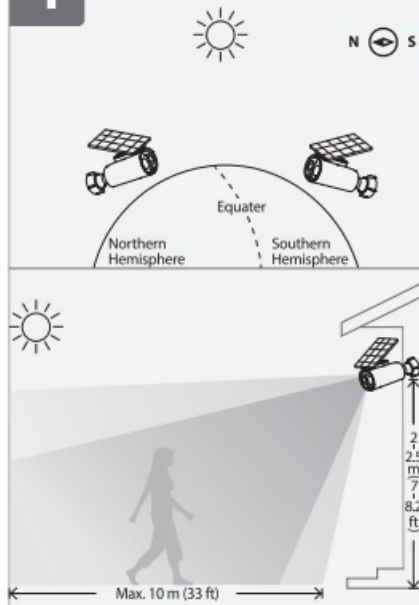


Install the Camera

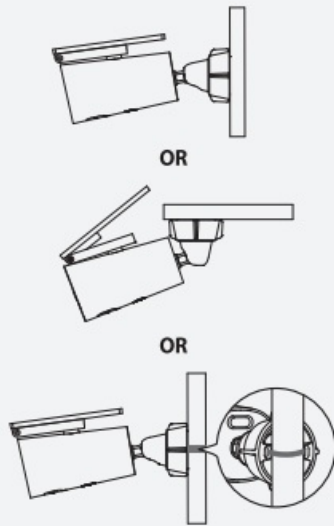
(Part 4)

Fully charge the camera before installation. Make sure the mounting surface is strong enough to hold three times the weight of the camera.

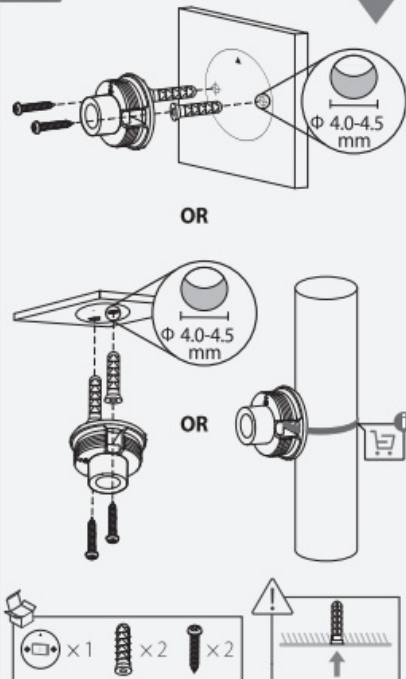
4



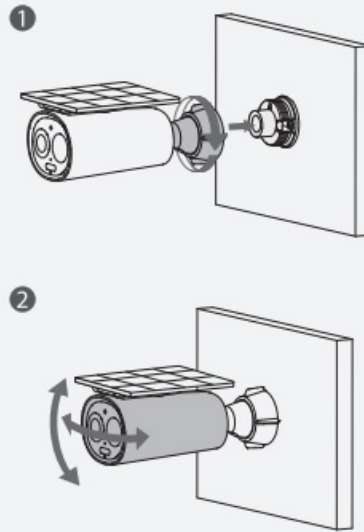
Option 1



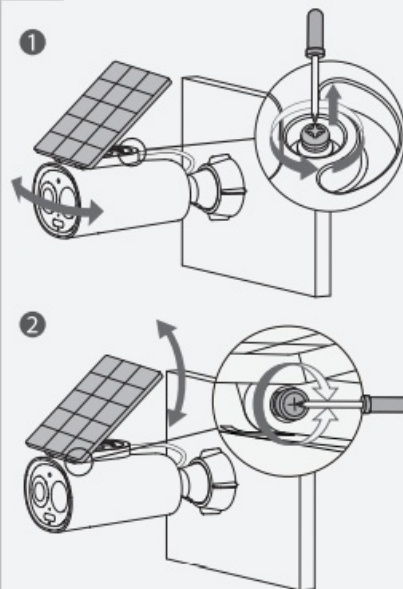
1



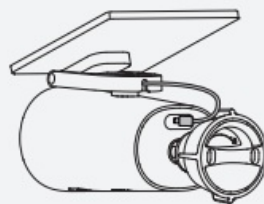
2



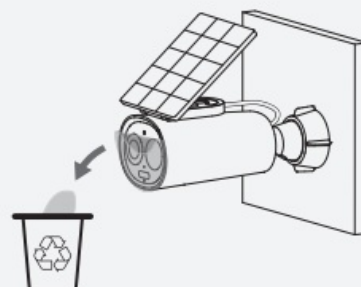
3



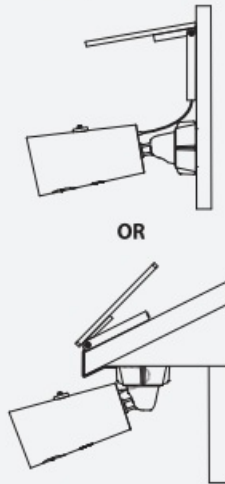
4



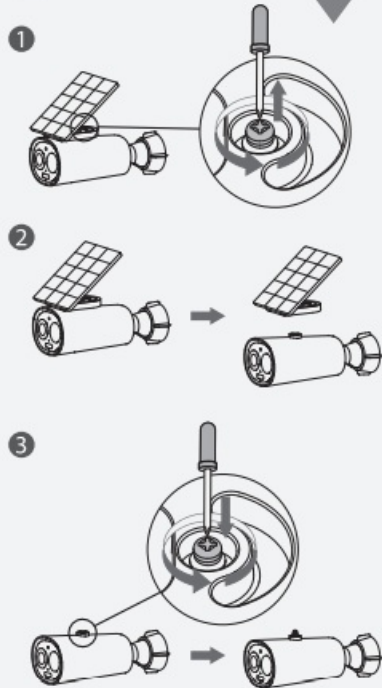
i



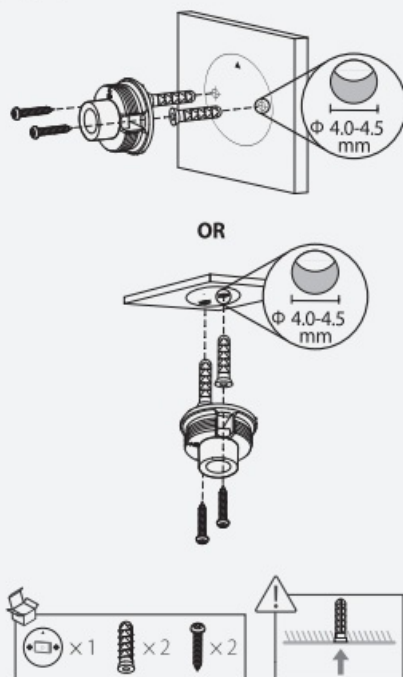
Option 2



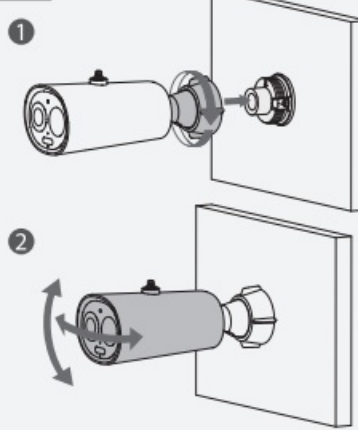
1



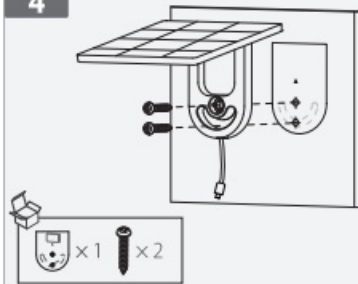
2



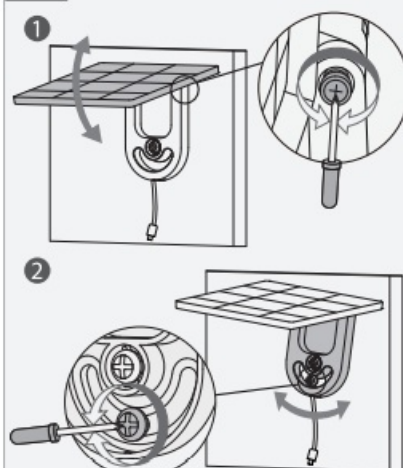
3



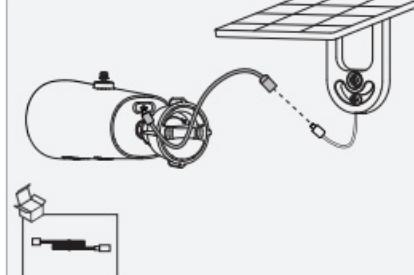
4



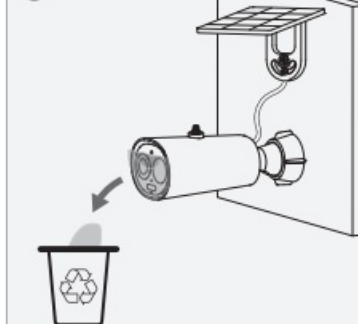
5



6



i



LED Status		Device Status
Blue	Flashing slowly	Charging
	Solid	Fully charged
Green	Flashing slowly	Ready to set up the device
	Flashing fast	Connecting to the router
	Solid	Booting
		Working properly
Red	Flashing slowly	Disconnected from the router
	Solid	Device malfunction
Red & Green	Alternating	Updating firmware (keep battery enough)

Double-press the power button to turn off the camera. If you need to reset the camera, press and hold the reset button for 5 s.

MORE INFO

- service.global@imoulife.com
- <https://www.imoulife.com>
- **FACEBOOK** @imouglobal



Documents / Resources

	<p>Imou Cell 3C Series All in One Security Camera [pdf] User Guide 1.2.51.50.10112-000, Cell 3C Series All in One Security Camera, Cell 3C Series, All in One Security Camera, Security Camera, Camera</p>
--	---

References

- [User Manual](#)

[Manuals+](#), [Privacy Policy](#)

This website is an independent publication and is neither affiliated with nor endorsed by any of the trademark owners. The "Bluetooth®" word mark and logos are registered trademarks owned by Bluetooth SIG, Inc. The "Wi-Fi®" word mark and logos are registered trademarks owned by the Wi-Fi Alliance. Any use of these marks on this website does not imply any affiliation with or endorsement.