


# Imou Cell 3C One Security Camera



## imou Cell 3C One Security Camera User Guide

[Home](#) » [imou](#) » imou Cell 3C One Security Camera User Guide 

### Contents

- [1 imou Cell 3C One Security Camera](#)
- [2 Product Information](#)
- [3 Product Usage Instructions](#)
- [4 WHAT'S INCLUDE](#)
- [5 Power On the Camera](#)
- [6 Get the Imou Life App](#)
- [7 Set Up the Camera](#)
- [8 Install the Camera](#)
- [9 Documents / Resources](#)
  - [9.1 References](#)
- [10 Related Posts](#)

# Imou

**imou Cell 3C One Security Camera**



## Product Information

### Specifications:

- **Model:** nuJ-a-lf
- **Version:** V1.0.0 M3K
- **Hemisphere:** Northern
- **Power Source:** SVDC 2A power adapter or solar panel

## Product Usage Instructions

### Power On the Camera:

Hold down the power button for 2-3 seconds to turn on the camera. The LED will light up in green when the camera is booting. If the LED flashes red twice and then turns off, it indicates low battery. Please charge it with a SVDC 2A power adapter or a solar panel.

### Install the Camera:

Fully charge the camera before installation. Ensure the mounting surface is strong enough to hold three times the weight of the camera.

### Device Status & LED Indicators:

- **Blue LED:** Flashing slowly – Charging
- **Green LED:** Solid – Fully charged
- **Red LED:** Flashing fast – Ready to set up the device
- **Red & Green Alternating:** Device malfunction

### Turning Off the Camera & Resetting:

If you need to turn off the camera, double-press the power button. To reset the camera, press and hold the reset button for 5 seconds.

## FAQ:

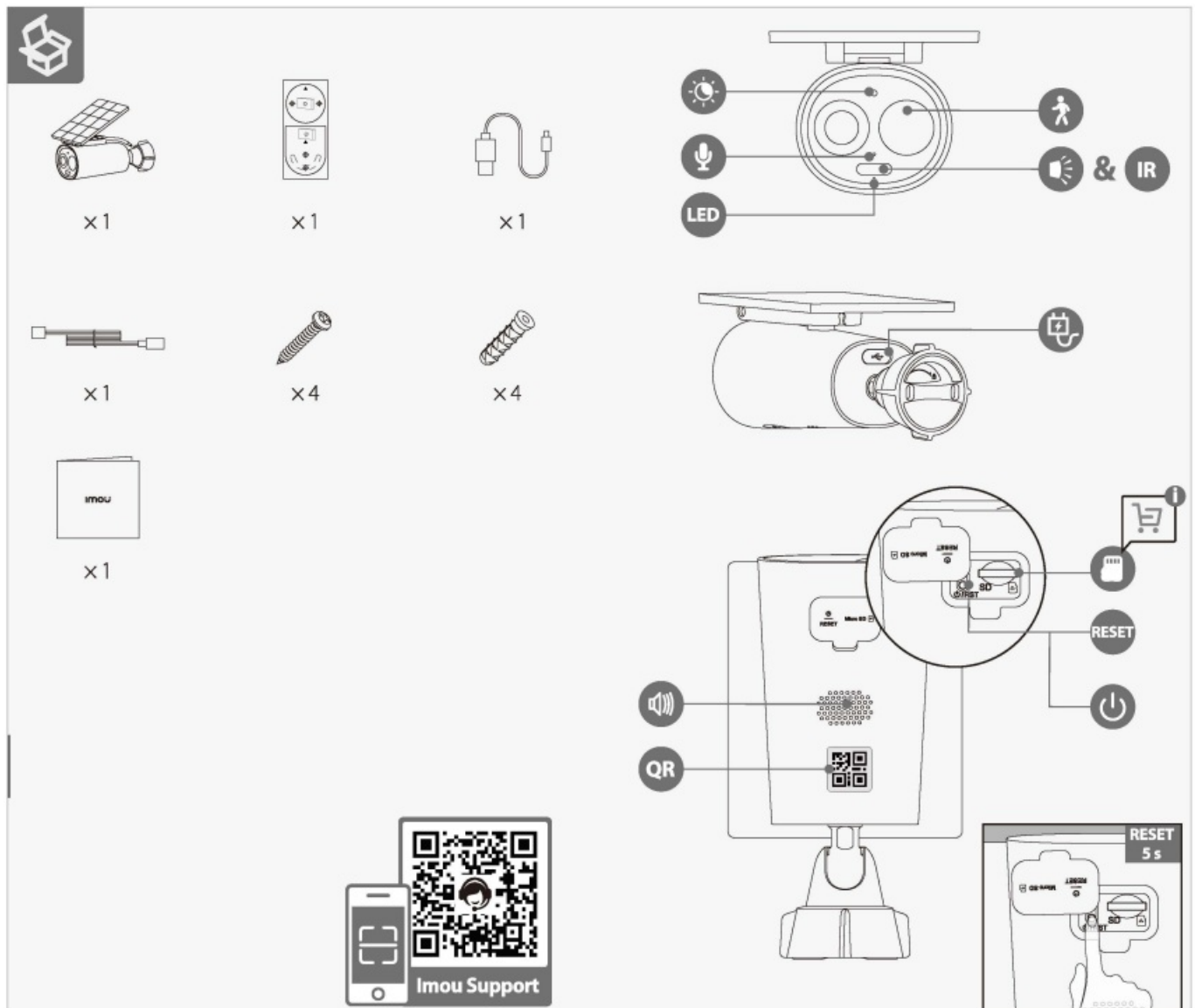
- **How do I know if the camera is fully charged?**

The green LED indicator will be solid when the camera is fully charged.

- **What should I do if the camera malfunctions?**

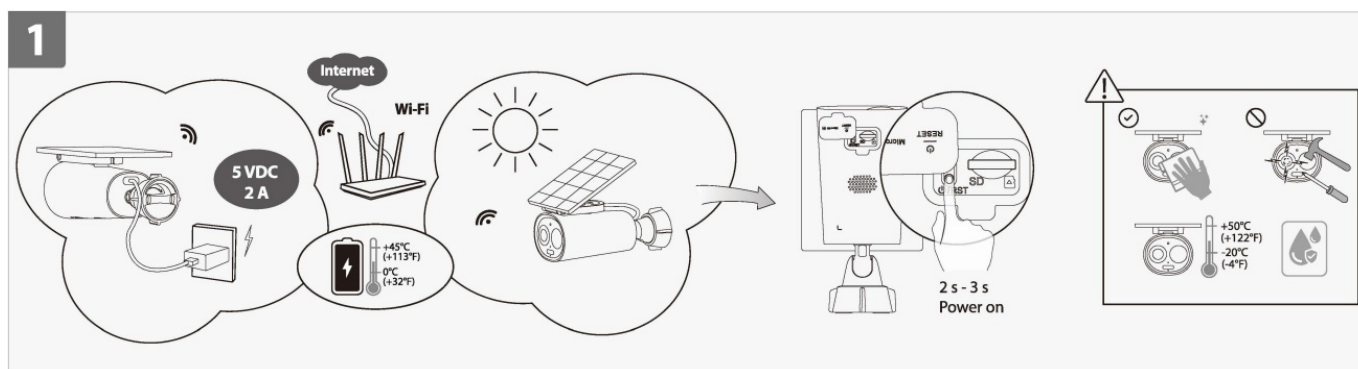
If the device status LED shows red and green alternating lights, it indicates a device malfunction. Try resetting the camera by pressing and holding the reset button for 5 seconds.

## WHAT'S INCLUDE



## Power On the Camera

Hold down the power button for 2-3 seconds to turn on the camera. The LED lights up in green when the camera is booting. If the LED flashes red twice and then turns off, the camera is out of battery. Please charge it with a 5VDC 2A power adapter or a solar panel.



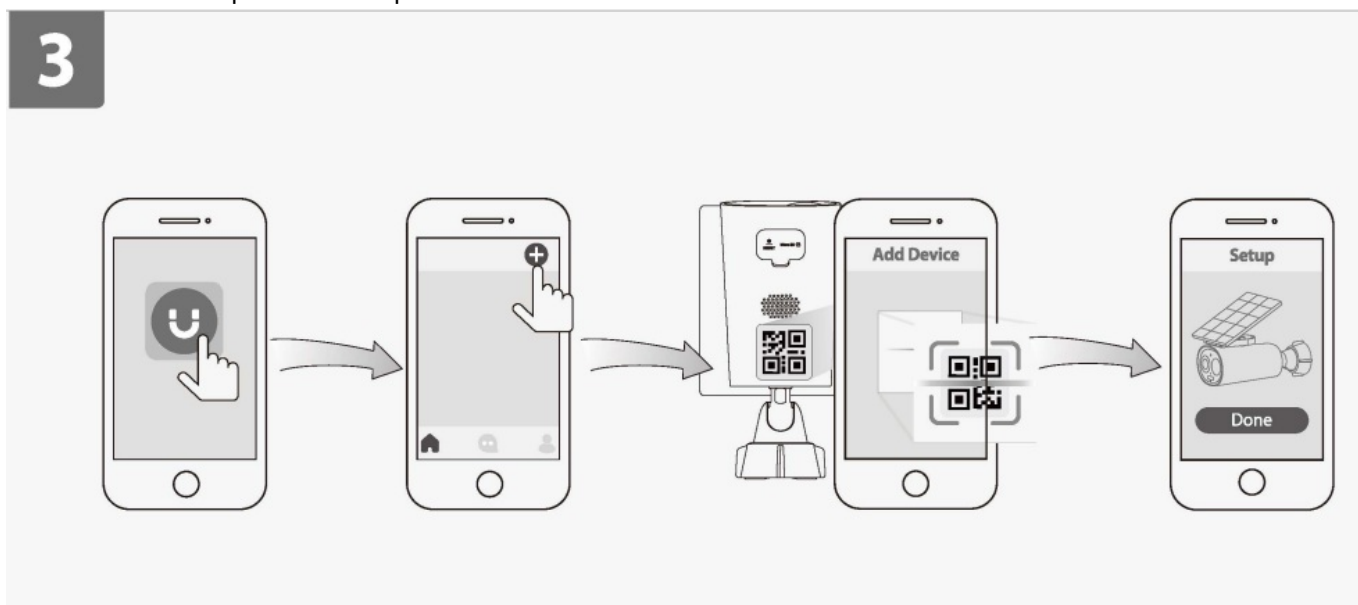
## Get the Imou Life App

Scan the QR code on part 2 or search for “Imou Life” to download and install the app. Create an account and log in.



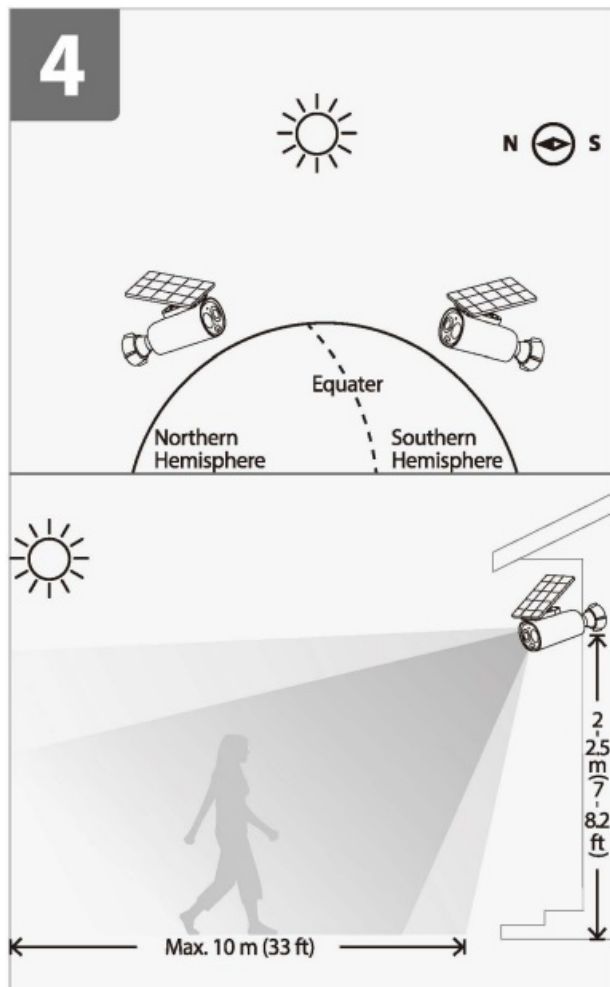
## Set Up the Camera

Scan the QR code on the body of the device or the cover of this guide with the app, and then follow on-screen instructions to complete the setup.

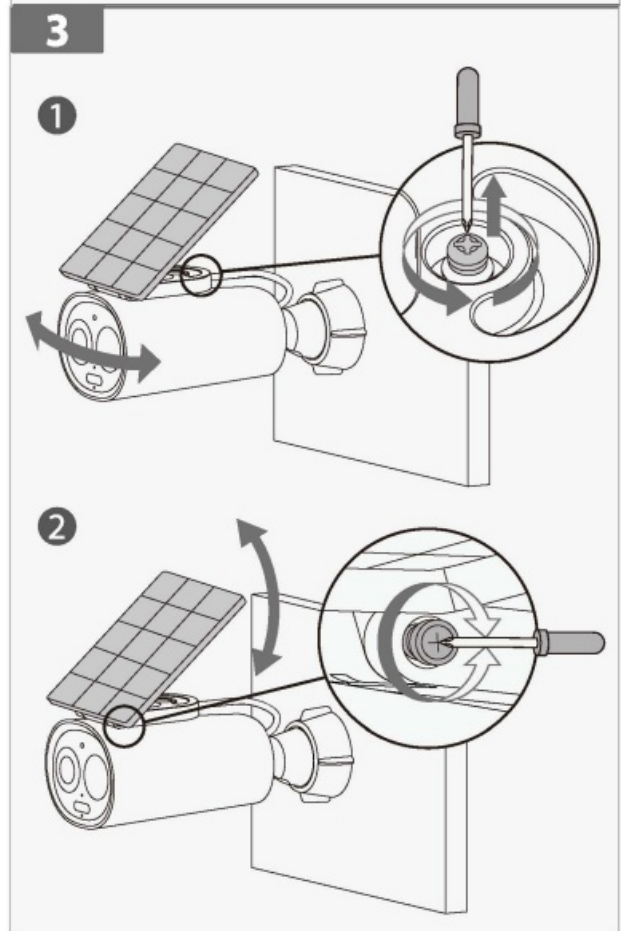
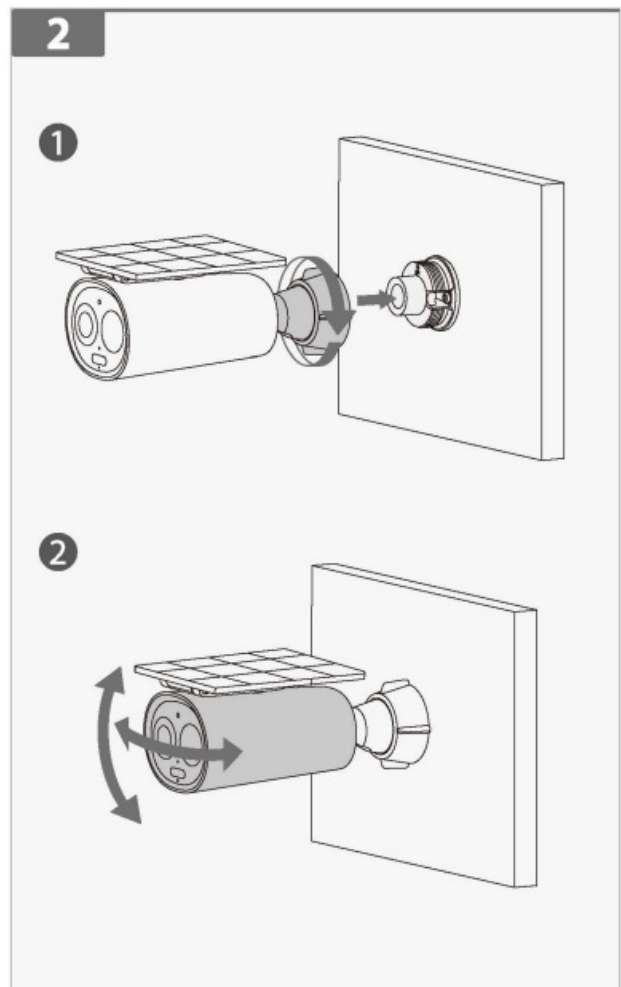
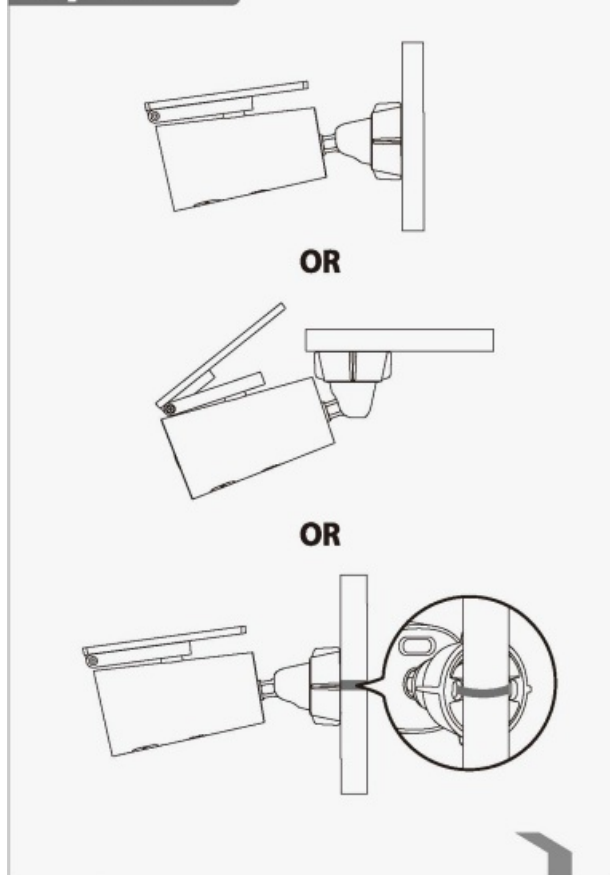


## Install the Camera

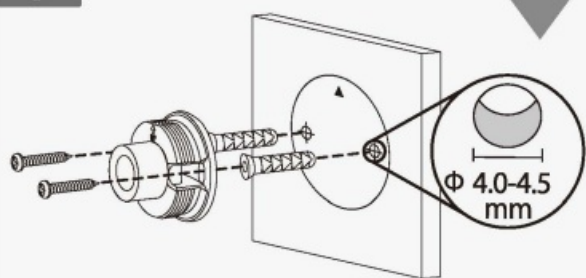
Fully charge the camera before installation. Make sure the mounting surface is strong enough to hold three times the weight of the camera.



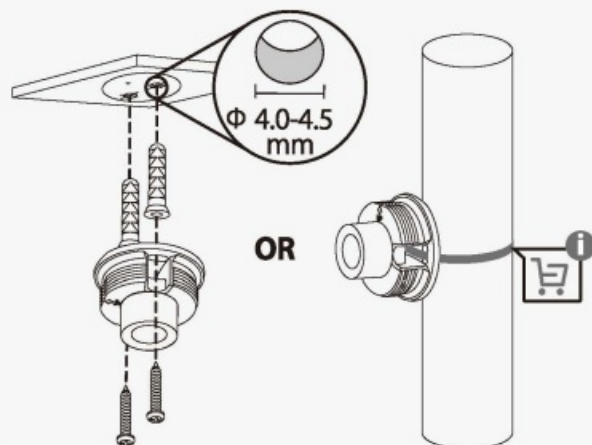
### Option 1



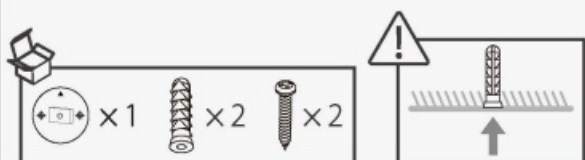
1



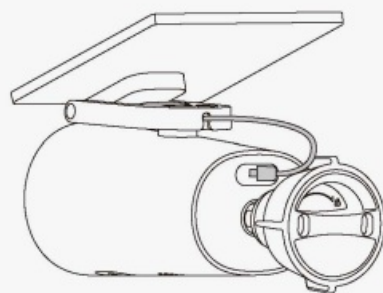
OR



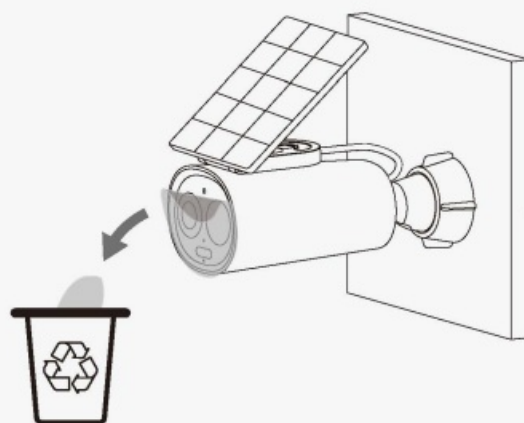
OR



4

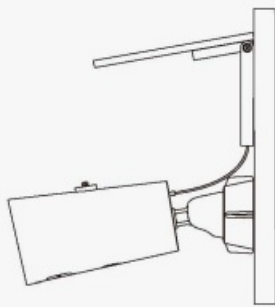


i

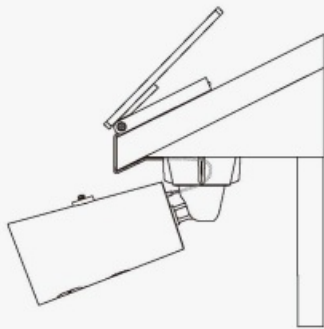




## Option 2

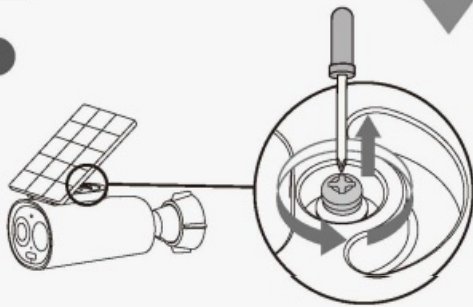


OR

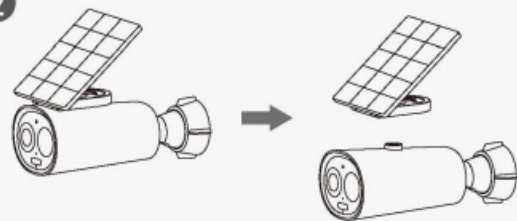


1

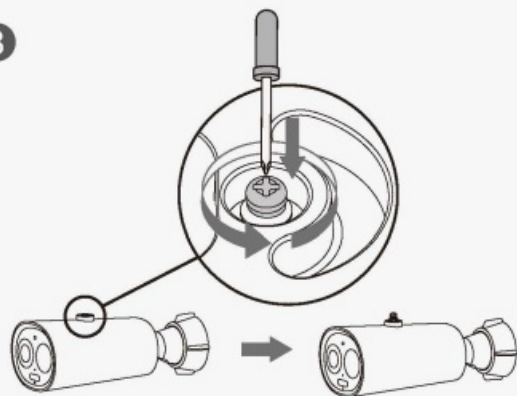
1



2

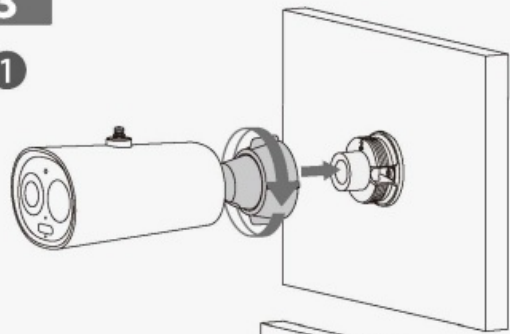


3

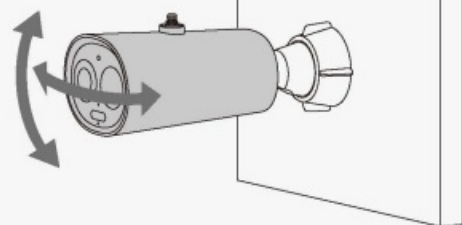


3

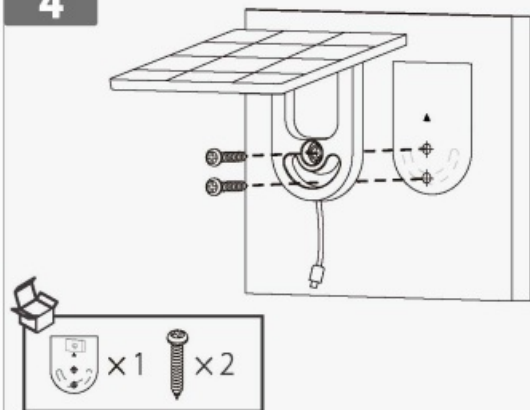
1



2

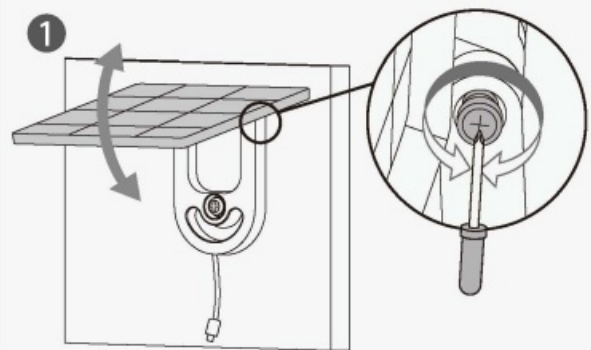


4

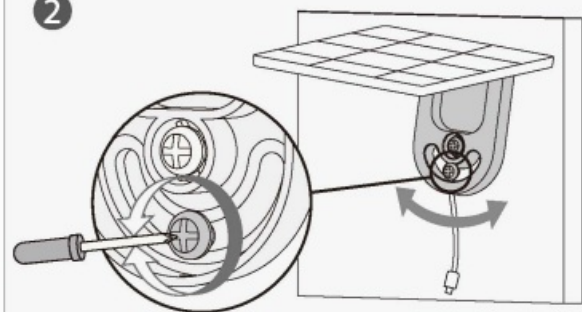


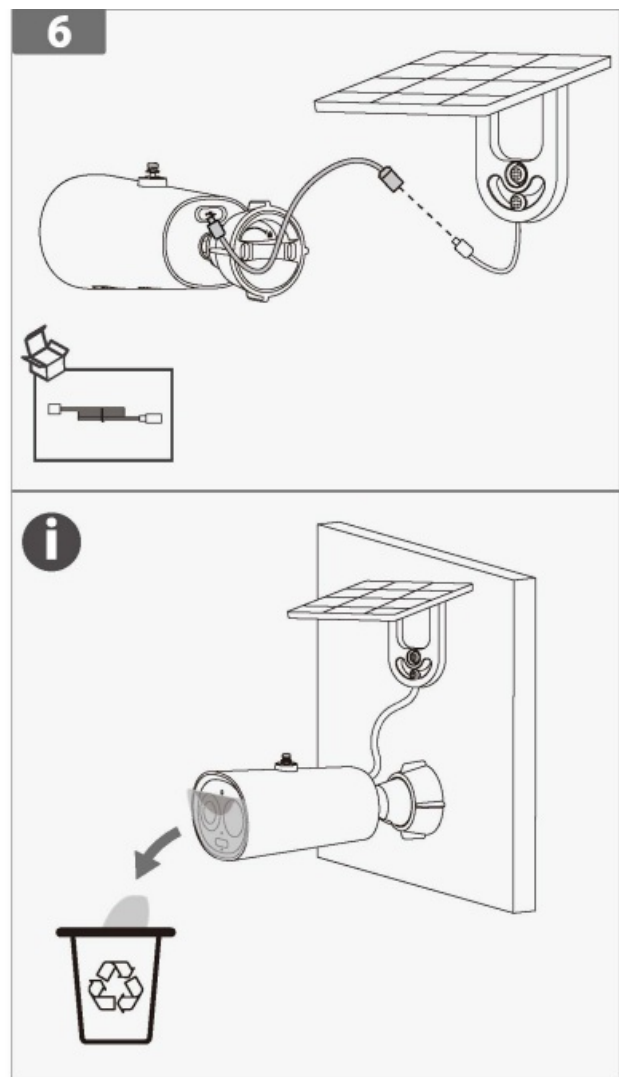
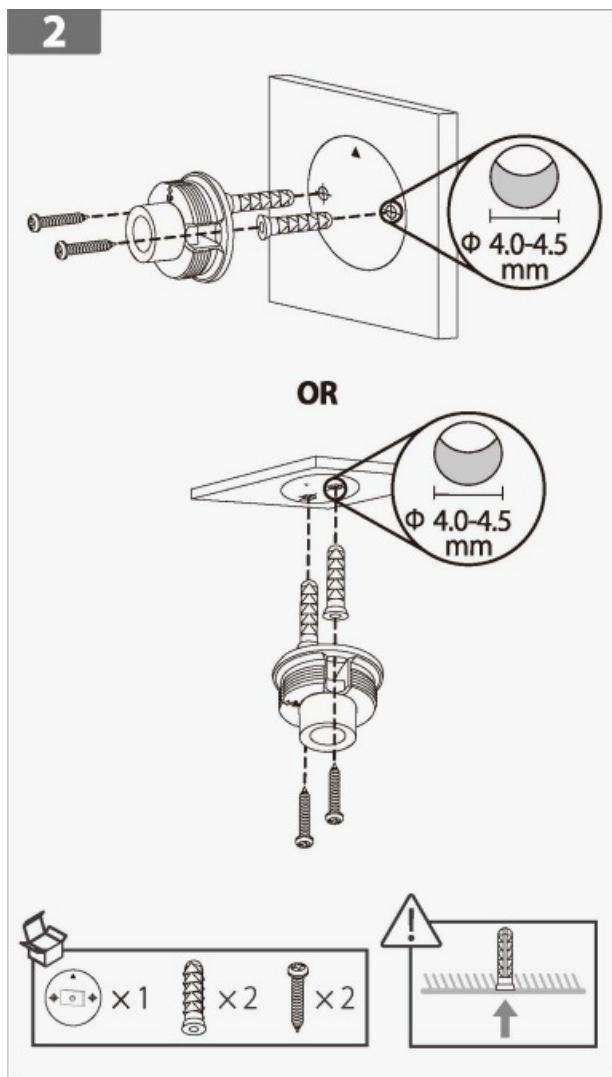
5

1



2





Double-press the power button to turn off the camera. If you need to reset the camera, press and hold the reset button for 5 s.

LED Status		Device Status
Blue	Flashing slowly	Charging
	Solid	Fully charged
Green	Flashing slowly	Ready to set up the device
	Flashing fast	Connecting to the router
	Solid	Booting
Red	Flashing slowly	Working properly
	Solid	Disconnected from the router
Red & Green	Alternating	Device malfunction
		Updating firmware (keep battery enough)

[service.global@imoulife.com](mailto:service.global@imoulife.com)

<https://www.imoulife.com>

@imouglobal



## Documents / Resources



[imou Cell 3C One Security Camera](#) [pdf] User Guide  
Cell 3C One Security Camera, Cell 3C, One Security Camera, Security Camera, Camera

## References

- [Il motore di ricerca per risparmiare sui tuoi acquisti | Trovaprezzi.it](#)
- [User Manual](#)

### Manuals+. Privacy Policy

This website is an independent publication and is neither affiliated with nor endorsed by any of the trademark owners. The "Bluetooth®" word mark and logos are registered trademarks owned by Bluetooth SIG, Inc. The "Wi-Fi®" word mark and logos are registered trademarks owned by the Wi-Fi Alliance. Any use of these marks on this website does not imply any affiliation with or endorsement.