




IMMERGAS CODE 3.032258 Rear Connection Kit Instructions

[Home](#) » [IMMERGAS](#) » IMMERGAS CODE 3.032258 Rear Connection Kit Instructions 

IMMERGAS CODE 3.032258 Rear Connection Kit Instructions



Contents

- [1 GENERAL WARNINGS](#)
- [2 KIT INSTALLATION](#)
- [3 Documents / Resources](#)
- [4 Related Posts](#)

GENERAL WARNINGS

All the products are protected with suitable transport packaging.

The material must be stored in dry environments and protected against weathering.

This instruction manual provides technical information for installing the kit. As for the other issues related to kit installation (e.g. safety in the work site, environment protection, injury prevention), it is necessary to comply with

the provisions specified in the regulations in force and principles of good technique.

Improper installation or assembly of the appliance and/or components, accessories, kit and devices can cause unexpected problems to people, animals and objects. Read the instructions provided with the product carefully to ensure a proper installation of same. Installation and maintenance must be performed in compliance with the regulations in force, according to the manufacturer's instructions and by authorised professionally qualified staff, intending staff with specific technical skills in the plant sector, as envisioned by the Law.

KIT INSTALLATION

Assemble the connection unit as shown in the figure, taking care to interpose the gaskets.

Attention.

The sleeves inside the kit must only be used coupled to the shutoff valve kit; to install the valves, cut the pipe on the vertical side and mount the shut-off valves and sleeves in that order (Option 1 Installation).

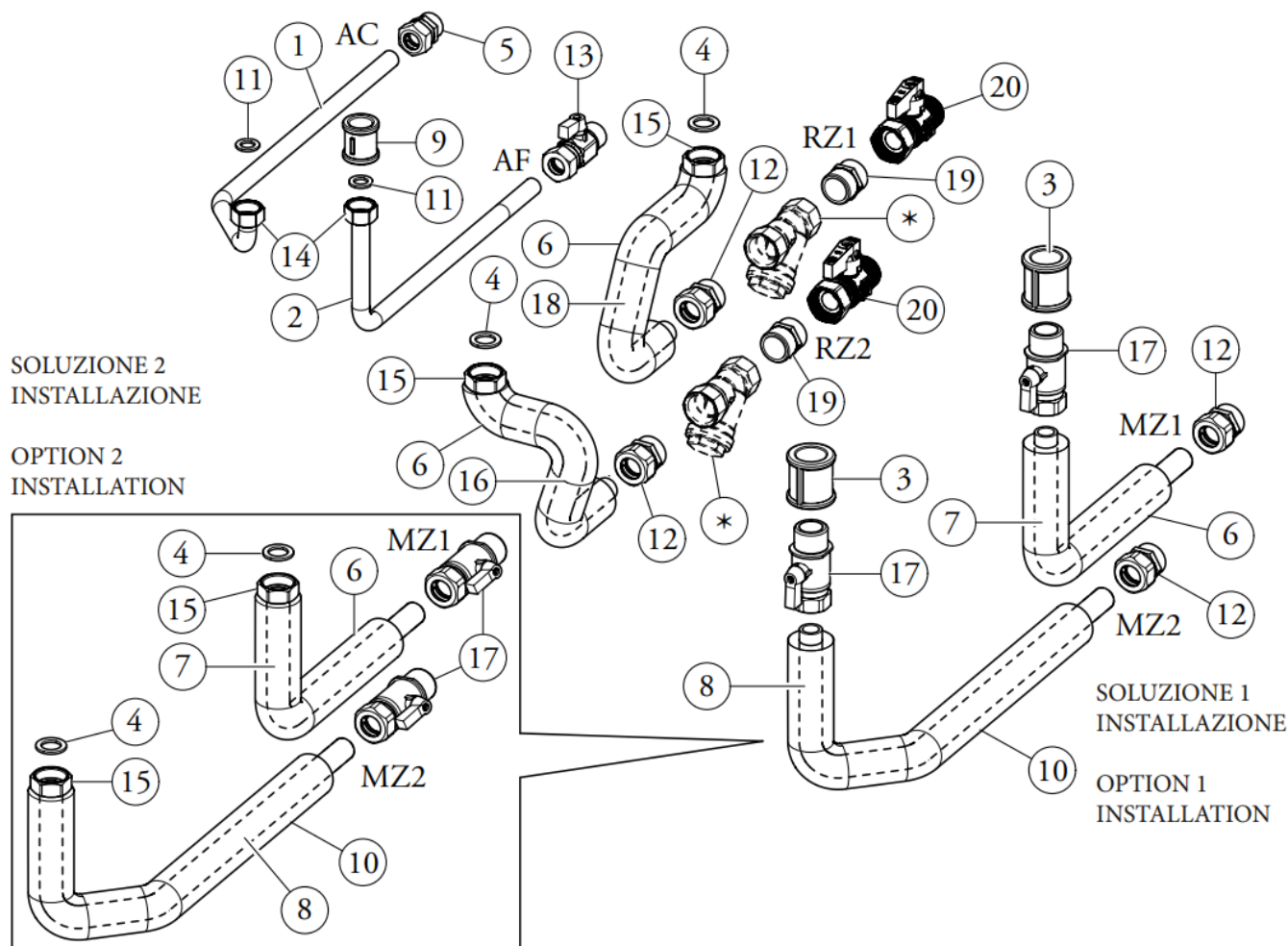
Due to different installation conditions, the delivery pipes can also be installed as shown in Fig. 1 "Option 2 Installation".

Also make sure to interpose suitable sealing material such as oakum or similar on the sleeve thread.

N.B. : when installing the "Y" filter, be sure to interpose a suitable sealing material such as tow or similar.

To prevent water from being able to infiltrate into the masonry, seal all the passages between the connection pipes and recessed frame.

N.B.: when installation is completed, check the hydraulic circuit by performing a leak test.



KIT COMPOSITION

Ref.	Description	Qty
1	Rear domestic hot water connection pipe	1
2	Rear domestic cold water connection pipe	1
3	Sleeve G 3/4" F – G 3/4" F	2
4	Gasket 24x16x2	4
5	G 1/2" fitting	1
6	Short pipe insulation	3
7	Rear connection short pipe zone 1	1
8	Rear connection long pipe zone 2	1
9	Sleeve G 1/2" F – G 1/2" F	1
10	Long pipe insulation	1
11	Gasket 18.5×11.5×2	2
12	G 3/4" fitting	4
13	G 1/2" ball valve	1
14	G 1/2" nut	2
15	G 3/4" nut	4

16	Rear connection short pipe zone 2	1
17	G 3/4" ball valve	2
18	Rear connection short pipe zone 1	1
19	G 3/4" nipple	2
20	G 3/4" ball valve	2
*	"Y" filter	2

Key:

AC – 1/2" domestic hot water outlet

AF – 1/2" domestic hot water inlet

MZ1 – Zone 1 3/4" system flow

RZ1 – Zone 1 3/4" system return


MZ2 – Zone 2 3/4" system flow

RZ2 – Zone 2 3/4" system return

Filtro a "Y": non presente in questo Kit ma presente tra gli accessori e viteria del Trio Pack.

"Y" filter: not present in this kit but present among the accessories and screws of the Trio Pack.

Documents / Resources

	<p>IMMERGAS CODE 3.032258 Rear Connection Kit [pdf] Instructions CODE 3.032258, Rear Connection Kit, CODE 3.032258 Rear Connection Kit, Connection Kit</p>
---	--