



# Immax NEO LITE Smart Atmosphere Lamp User Manual

[Home](#) » [immax](#) » Immax NEO LITE Smart Atmosphere Lamp User Manual 

## Contents

- 1 Immax NEO LITE Smart Atmosphere Lamp
- 2 TECHNICAL SPECIFICATIONS
  - 2.1 Immediate lighting
- 3 PRODUCT DIMENSIONS
- 4 INSTALLATION
- 5 BUTTON FUNCTION
- 6 DOWNLOAD AND REGISTRATION
- 7 APP CONNECTION
  - 7.1 Solution 1)
  - 7.2 Solution 2)
- 8 Documents / Resources
  - 8.1 References
- 9 Related Posts



## Immax NEO LITE Smart Atmosphere Lamp



Imax NEO LITE Smart Atmosphere lamp 2.2W RGB + CCT color and white, dimmable, WiFi

### TECHNICAL SPECIFICATIONS

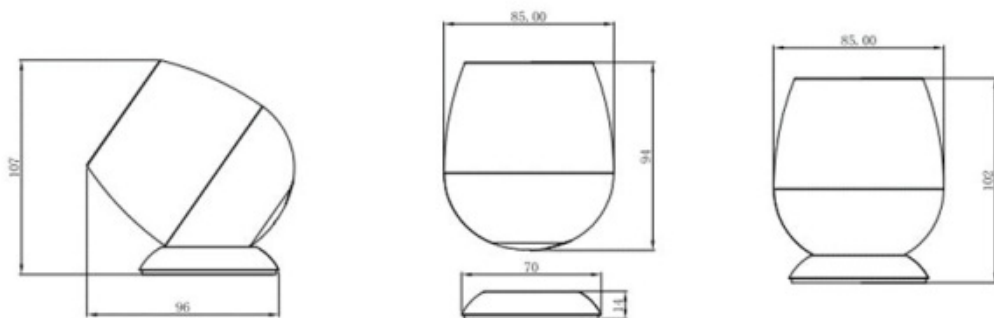
- **Power consumption:**
  - 2.2W
- **Mains standby power supply (Pnet):**
  - 0.4W
- **Body material:**
  - plastic
- **Light color:**
  - CCT
- **Color temperature:**
  - 2700K-6500K
- **Luminous flux:**
  - 230lm (in a 360° sphere)
- **Beam angle:**
  - 100°
- **Input voltage:**
  - 5V
- **Average service life:**

- 25,000 hours
- **Color rendering index:**
  - >80Ra
- **Dimensions:**
  - 95mm x 116mm

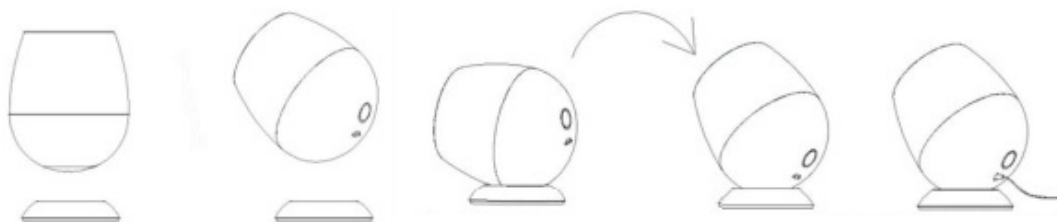
#### Immediate lighting

- **Energy class (EEL):**
  - F
- **Dimming option:**
  - YES
- **Degree of protection:**
  - IP20
- **Cable:**
  - 1m USB C
- **Certificates:**
  - CE

#### PRODUCT DIMENSIONS



#### INSTALLATION

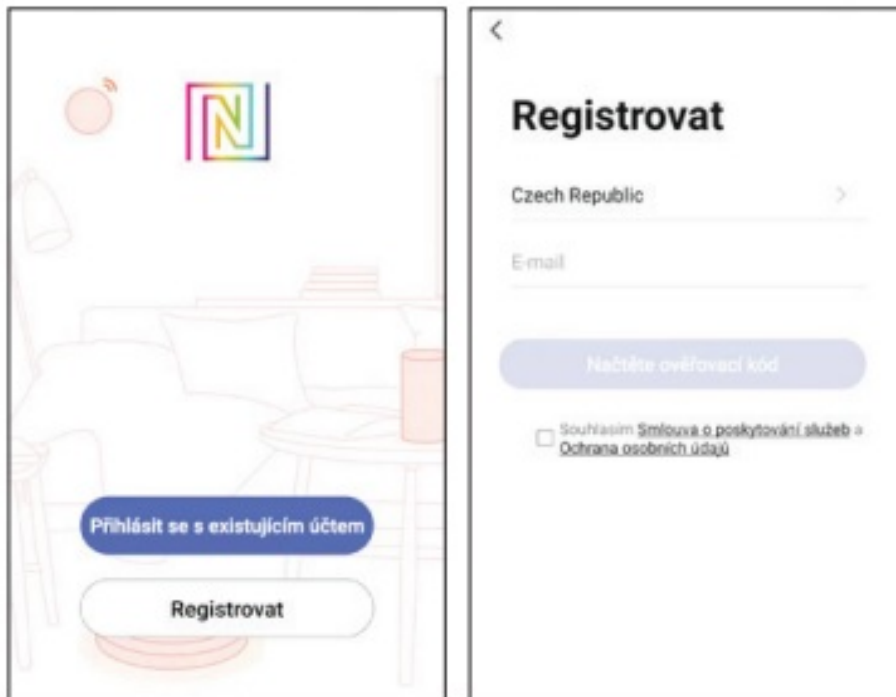


#### BUTTON FUNCTION

- Switching on – press the button once
- Switching off – press the button twice in succession
- Reset – press and hold the button for at least 5 seconds. The light then flashes
- Color change – the attempt is to turn on the light, so each time you press it, you change the color of the lighting

## DOWNLOAD AND REGISTRATION

Scan the QR Code to download “ Smart Life” APP. Or Search“Smart Life”in App store or Google Play to install the APP. Open the “ Smart Life” APP, tap “Register”- to get an account with your phone number or E-mail. Sign in the APP.

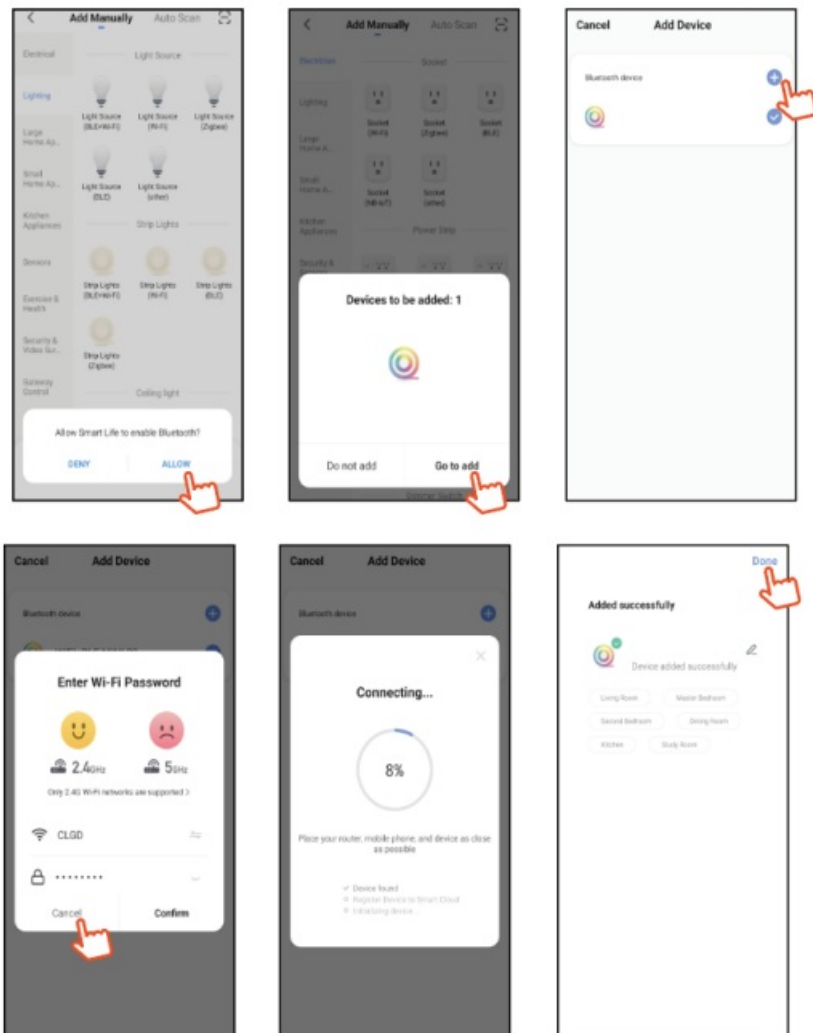


## APP CONNECTION

Preparation jobs: Power on the LED strip and enter the home of APP, please make sure your mobile and the smart kits are connected to the same WIFI.

### Solution 1)

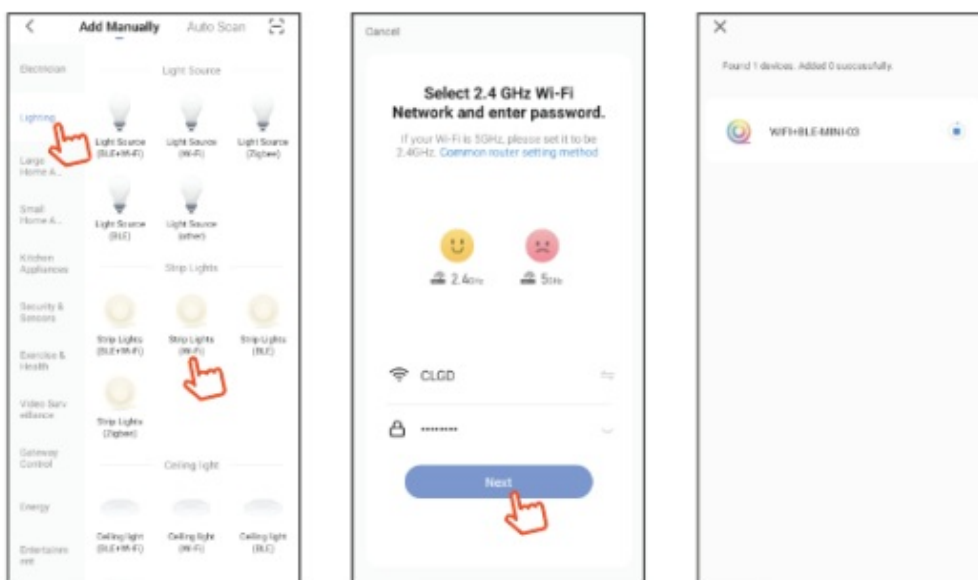
After powering on the strip, turn on and off 3 times(or long press the switch button for over 5 seconds), the strip will go into a status of quick flashing. Find the “+”(in the corresponding room of the APP) to add devices. If your mobile have already turned on bluetooth before connecting the LED strip, then no need to turn on bluetooth again, the APP will connect to the LED strip automatically. If your mobile didn't turn on bluetooth before connecting the LED strip, the APP will pop up an interface with tips to ask you to turn on bluetooth. Then please choose “Allow”, then the bluetooth function of your mobile will be turned on. After that, the APP will pop up tips with info of the LED strips, then choose “Go to add”. Will go into an interface of bluetooth device, choose the “+” and go into next interface(Enter Wi-Fi password). Input the password of the WIFI and choose “Confirm”, then it will go into status of “Connecting.....”, you will need to await for your mobile to pairing with the controller at this step. Choose “Done” when it shows “Added successfully”, then go into operation modes. (If solution 1 is not suitable with your devices, please refer to solution 2)

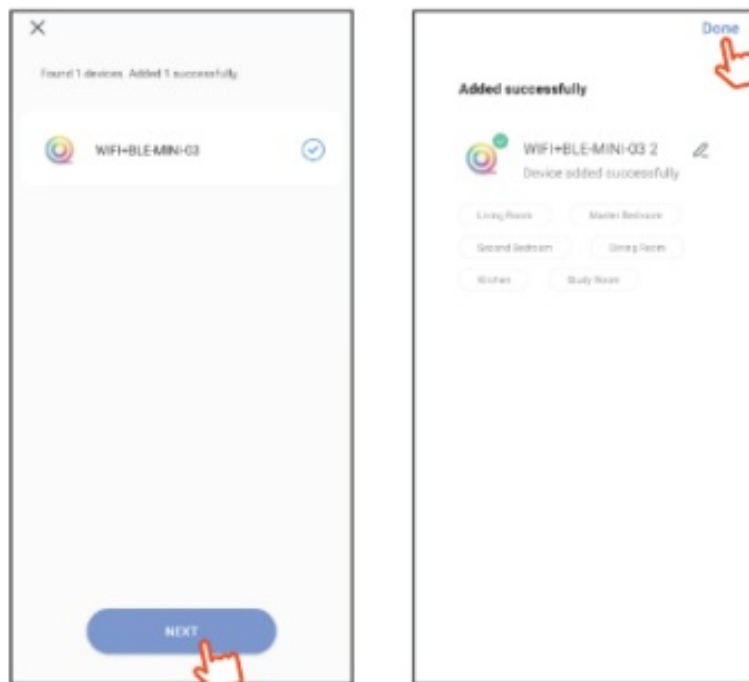


## Solution 2)

After powering on the strip, turn on and off 3 times(or long press the switch button for over 5 seconds), the strip will go into a status of quick flashing. Find the “+”(in the corresponding room of the APP) into interface of “Add manually”. Then choose “**lighting**” to choose the correct smart devices and go into interface of “**Select 2.4 GHz Wi-Fi Network and enter password**”.


Enter the Wi-Fi password, then choose “Next” and waiting until pairing success(-make sure your mobile and the smart devices are in the same Wi-Fi networks). Then go into the interface of “**Scanning devices**”, after scanning success and choosing “**Next**”, it will pop up interface of “add successfully” and choose “Done” to go into the operation modes.





Manufacturer and importer:  
IMMAX, Pohoří 703, 742 85 Vřesina, EU  
[www.immaxneo.cz](http://www.immaxneo.cz)  
[www.immaxneo.com](http://www.immaxneo.com)  
Made in P.R.C.

## Documents / Resources

	<p><a href="#">Immax NEO LITE Smart Atmosphere Lamp</a> [pdf] User Manual NEO LITE, Smart Atmosphere Lamp, Atmosphere Lamp, Smart Lamp, Lamp</p>
-------------------------------------------------------------------------------------	------------------------------------------------------------------------------------------------------------------------------------------------------

## References

- [Velkoobchod s LED technikou IMMAX | Immax.cz](#)
- [Velkoobchod s LED technikou IMMAX | Immax.cz](#)