

Immax NEO LITE Smart Ambiente Lamp



Immax NEO LITE Smart Ambiente Lamp User Manual

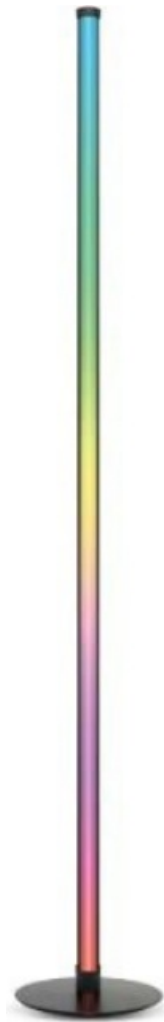
[Home](#) » [immax](#) » Immax NEO LITE Smart Ambiente Lamp User Manual 

Contents

- 1 Immax NEO LITE Smart Ambiente Lamp
- 2 TECHNICAL SPECIFICATIONS
- 3 PACKAGE CONTENTS
- 4 PRODUCT ASSEMBLY
- 5 CONTROLLER
- 6 REMOTE CONTROL
- 7 APP DOWNLOAD AND REGISTRATION
- 8 PAIRING THE PRODUCT TO THE APPLICATION
- 9 SAFETY INFORMATION
- 10 MAINTENANCE
- 11 Documents / Resources
 - 11.1 References



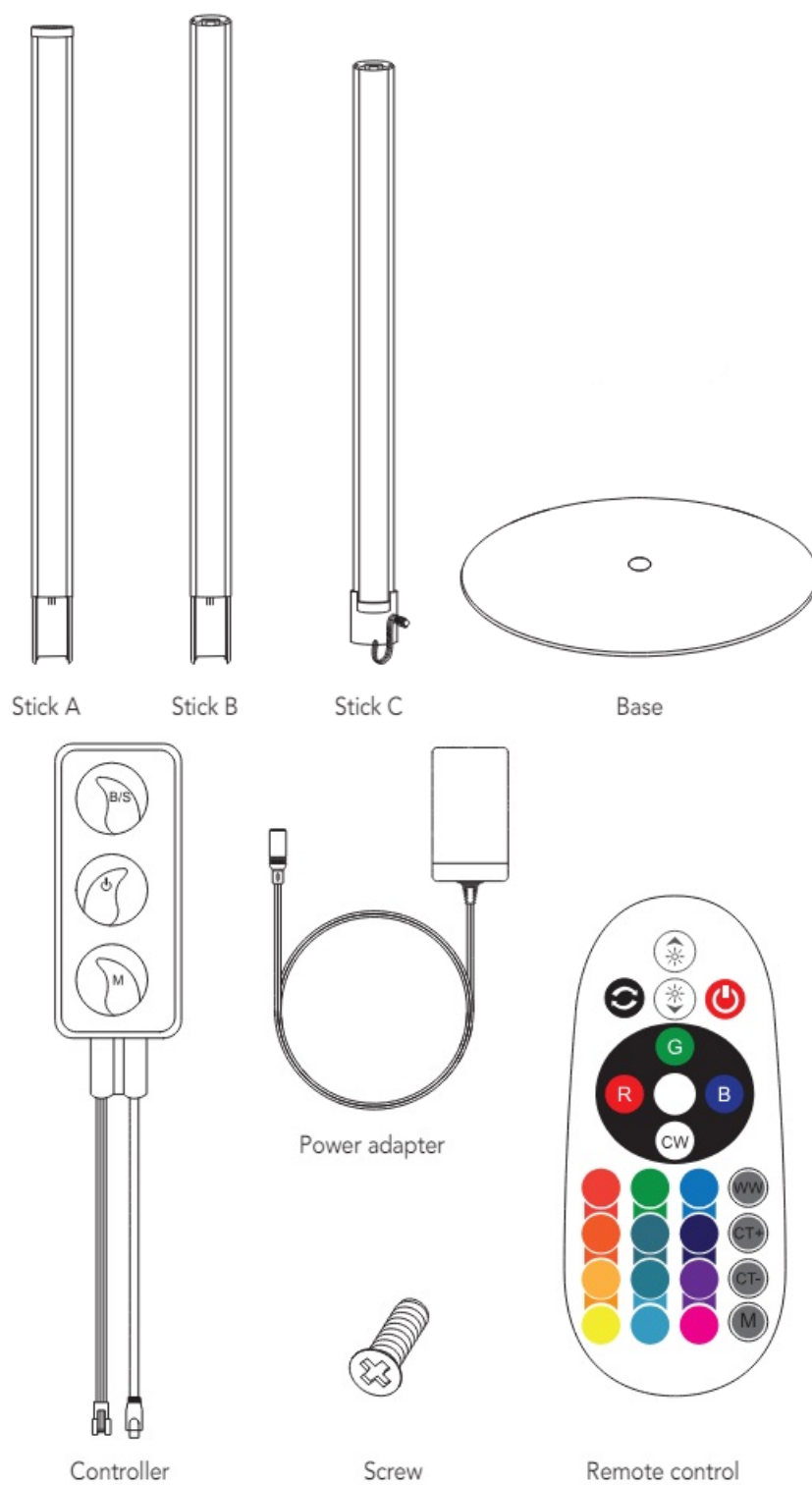
Immax NEO LITE Smart Ambiente Lamp



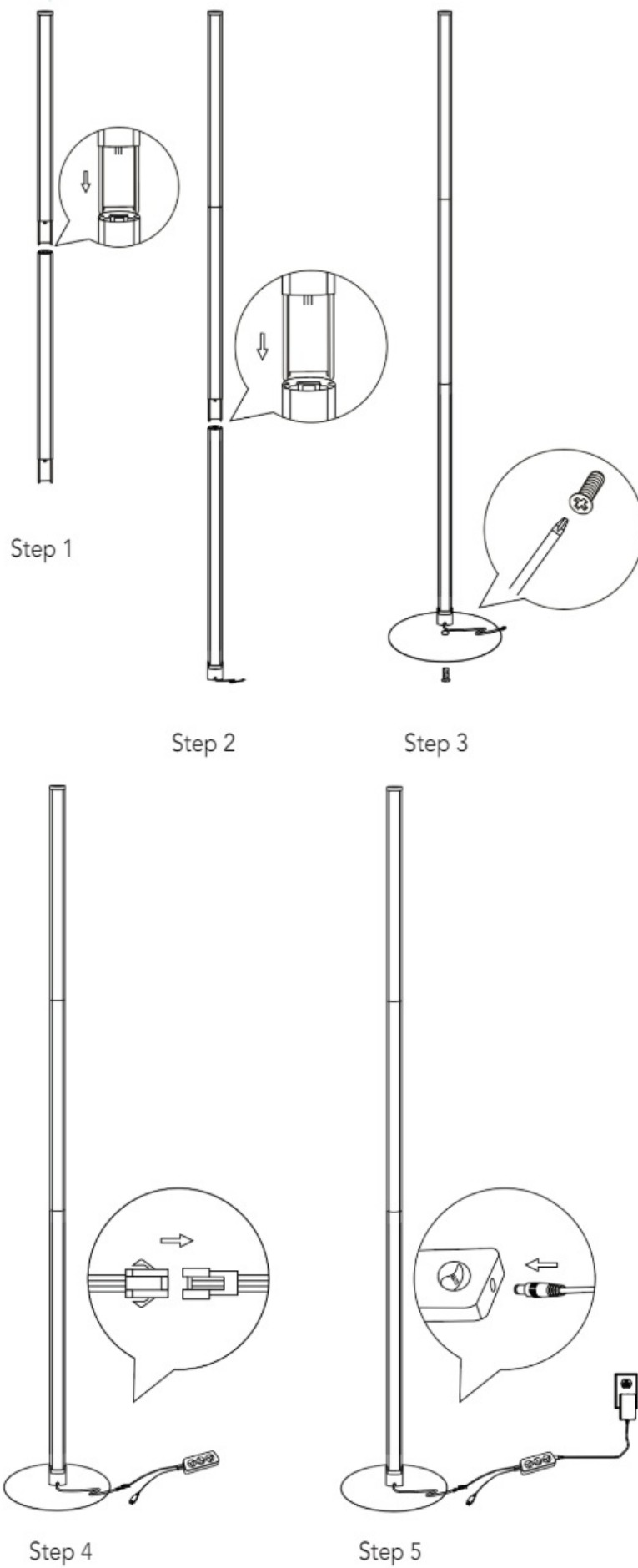
TECHNICAL SPECIFICATIONS

- **Power consumption:** 12W
- **Network standby power (Pnet):** 0.5W
- **Protocol:** Wi-Fi
- **Frequency:** 2400MHz~2483.5MHz
- **Maximum RF output power:** WiFi: 20dBm
- **Body material:** plastic, aluminum
- **Light color:** RGB
- **Source input voltage:** AC220-240V~ 50/60Hz
- **Lamp input voltage:** 12V
- **Average lifetime:** 25,000 hours
- **Color rendering index:** >80Ra
- **Dimensions:** 200x1530mm
- **Weight:** 1.15 kg
- Instant lighting
- **Dimming option:** YES
- **Degree of protection:** IP20
- **Certificates:** CE

PACKAGE CONTENTS



PRODUCT ASSEMBLY



- **Step 1:** insert the end of rod A into the hole in rod B. As shown in the picture. Make sure the ends fit together well.
- **Step 2:** insert these two connected rods into the hole in rod C. Again, make sure everything is properly

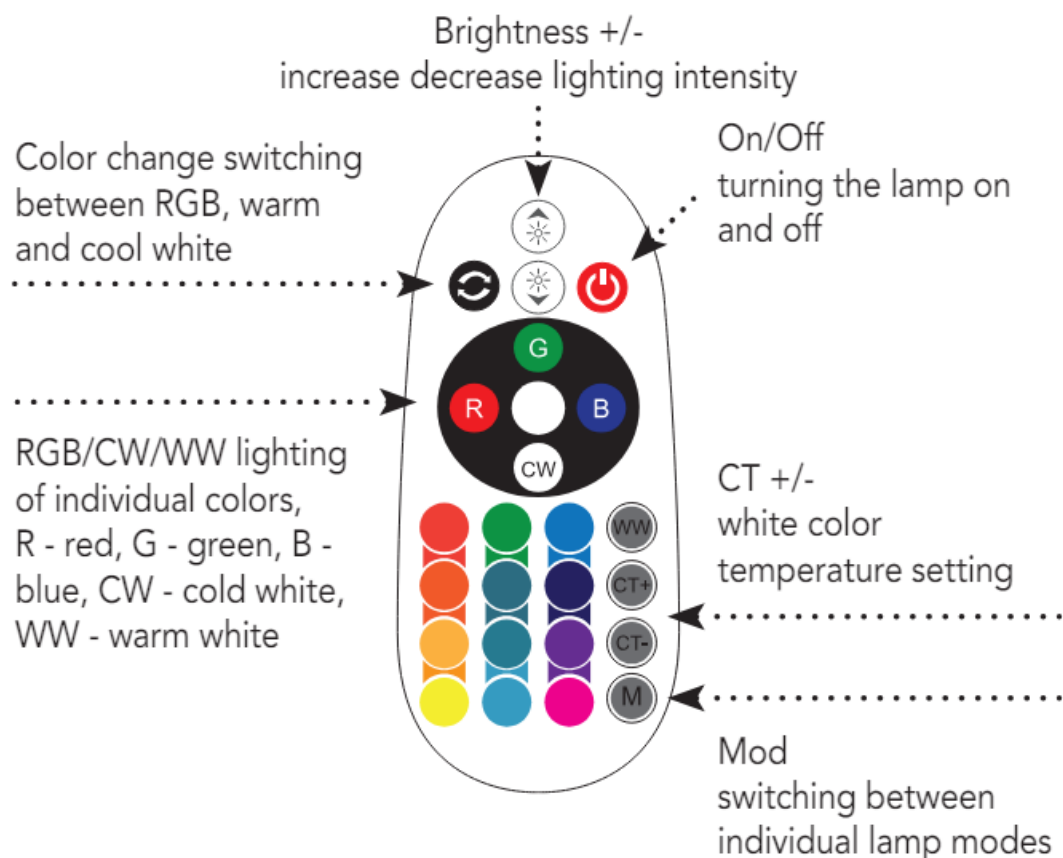
connected.

- **Step 3:** screw all 3 connected bars to the base. See picture. Make sure the screw is properly tightened.
- **Step 4:** connect the wire from rod C to the controller. See picture
- **Step 5:** Connect the power adapter to the controller and then connect it to the mains.

CONTROLLER

- **B/S button:**
 - long press to change the lighting intensity
- **On/Off button:**
 - you can turn the lamp on or off with a short press
 - a long press (more than 5 seconds) will put the device into pairing mode
- **M button:**
 - with a short press, you switch between scene mode and quick music mode
 - double press to switch between modes: static/dynamic/DIY/music
 - long press to exit or enter Music mode

REMOTE CONTROL



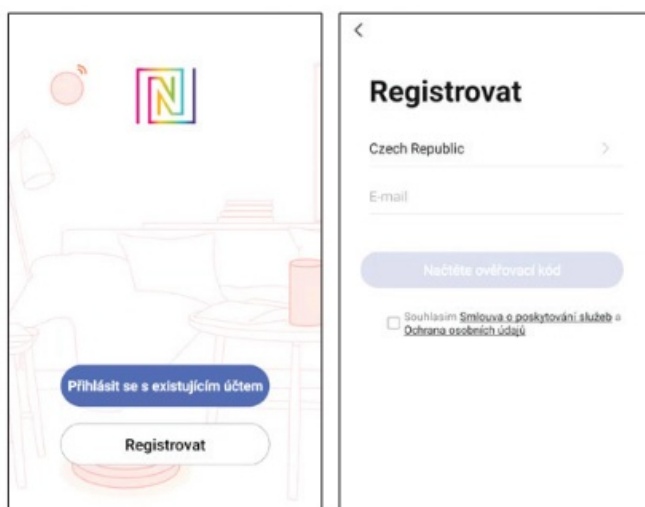
APP DOWNLOAD AND REGISTRATION

Scan the QR code to download the Immax NEO PRO app:



Or search for and install the Immax NEO PRO app in the App Store or Google Play.

- Launch the Immax NEO PRO app and click “Register” to create your own account.
- If you have completed your registration, log in to your account.



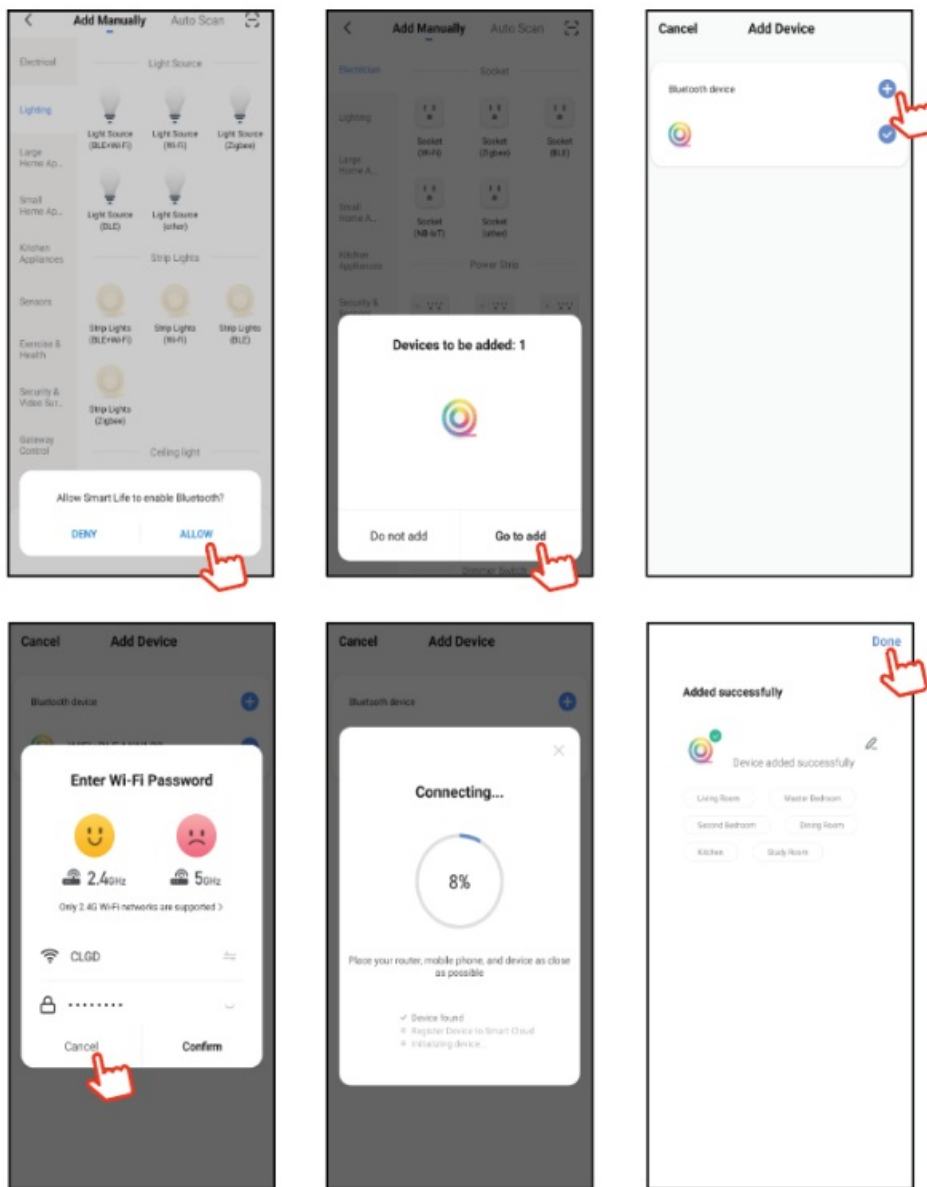
PAIRING THE PRODUCT TO THE APPLICATION

Preparation: Turn on the LED light and open the Immax NEO PRO app. Make sure you are connected to the same WiFi network that the product will be connected to.

OPTION TO ADD VIA BLUETOOTH

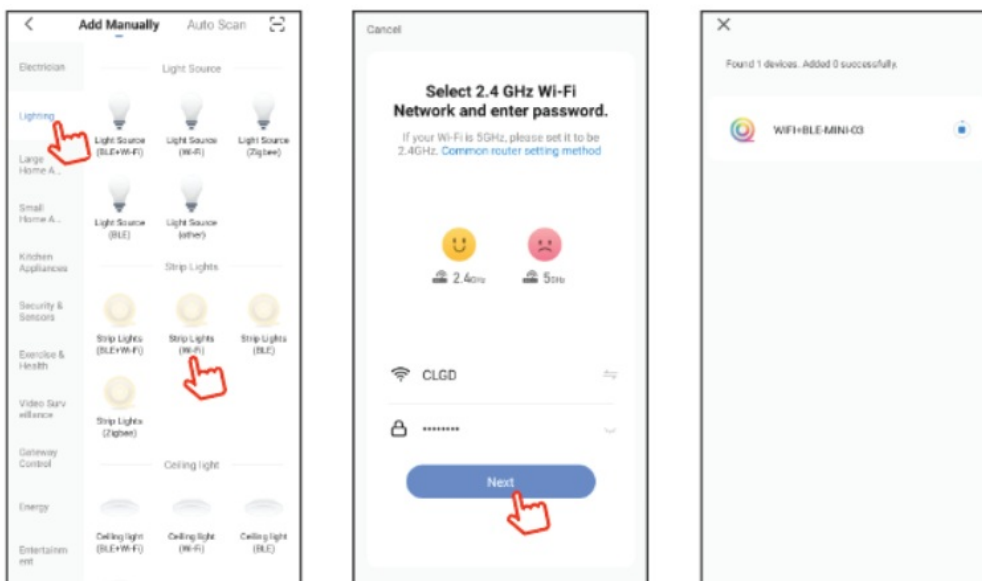
Reset the LED light – long press the button on the light for more than 5 seconds. The light will start flashing rapidly. If you do not have Bluetooth turned on on your mobile device, you will be prompted to do so. After turning on Bluetooth, the mobile device will automatically find the product. A window with information about finding a new device will appear in the application. Click the “Continue” button and then the “+” button.

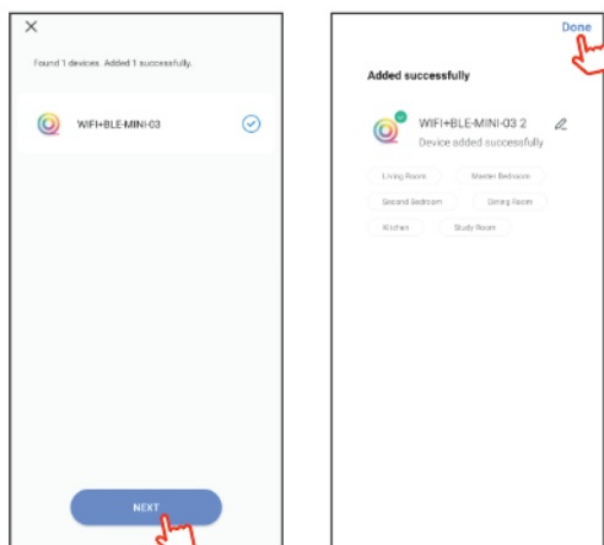
Enter the access data for the WiFi network and confirm. Then the product is paired and the Immax NEO PRO app is added.



OPTION TO ADD WITHOUT USING BLUETOOTH

Reset the LED light – long press the button on the light for more than 5 seconds. The light will start flashing rapidly. In the Immax NEO PRO application, click on the Room tab and then on the “+” button to add a device. Select a product in the Immax NEO tab. Enter the access data for the WiFi network and confirm. The product is then paired and added to the Immax NEO PRO app.





SAFETY INFORMATION

WARNING: Keep out of reach of children. This product contains small parts that may cause choking or injury if swallowed.

WARNING: Every battery has the potential to release harmful chemicals that can damage skin, clothing or the area where the battery is stored. To avoid the risk of injury, do not allow any substance from the battery to come into contact with your eyes or skin. Any battery can crack or even explode if exposed to fire or other forms of excessive heat. Be careful when handling batteries. To reduce the risk or injury caused by mishandling batteries, take the following precautions:

- Do not use different brands and types of batteries in the same device
- When replacing batteries, always replace all batteries in the device
- Do not use rechargeable or reusable batteries.
- Do not allow children to install batteries without supervision.
- Follow the battery manufacturer's instructions for proper battery handling and disposal.

NOTICE: The product and battery should be disposed of at a recycling center. Do not dispose of with normal household waste.

ATTENTION: To ensure the safe use of the product, it is necessary to bring wires at the installation site in accordance with applicable regulations. Installation must only be carried out by a person with appropriate certification in the electrical field. During assembly or when a defect is detected, the power cable must always be disconnected from the socket (in the case of direct connection, the relevant circuitbreaker must be turned off). Improper installation may result in product damage and injury.

WARNING: Do not disassemble the product, risk of electric shock.

ATTENTION: Use only the original power adapter supplied with the product. Do not operate the device if the power cable shows signs of damage. **WARNING:** Follow the instructions in the attached manual.

MAINTENANCE

Protect the equipment from contamination and pollution. Wipe the device with a soft cloth, do not use rough or coarse-grained material.

DO NOT use solvents or other aggressive cleaners or chemicals.

Safety information for this product can be downloaded from www.immax.eu.

A Declaration of Conformity has been issued for this product, more information can be found at www.immax.eu.

If you have a question or need advice, contact us at support@immax.eu.

Documents / Resources



[Immax NEO LITE Smart Ambiente Lamp](#) [pdf] User Manual
NEO LITE Smart Ambiente Lamp, NEO LITE, Smart Ambiente Lamp, Ambiente Lamp, Lamp

References

- [User Manual](#)

Manuals+. [Privacy Policy](#)

This website is an independent publication and is neither affiliated with nor endorsed by any of the trademark owners. The "Bluetooth®" word mark and logos are registered trademarks owned by Bluetooth SIG, Inc. The "Wi-Fi®" word mark and logos are registered trademarks owned by the Wi-Fi Alliance. Any use of these marks on this website does not imply any affiliation with or endorsement.