

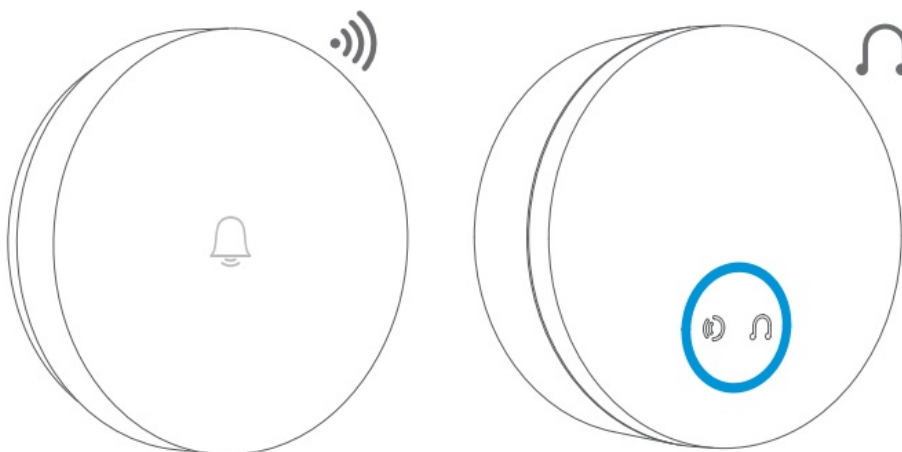


Immax NEO 07780L Wireless Replacement Doorbell Button User Manual

[Home](#) » [immax](#) » Immax NEO 07780L Wireless Replacement Doorbell Button User Manual 



User Manual



Immax NEO LITE
Smart wireless doorbell, piezoelectric



Contents

- 1 Button Specifications:
- 2 IMMAX NEO PRO APP AND DEVICE PAIRING
- 3 GETTING THE RINGTONE MODULE UP AND RUNNING
- 4 GETTING THE BUTTON TO WORK
- 5 INSTALLING THE BUTTON
- 6 SETTINGS IN IMMAX NEO PRO
- 7 Documents / Resources
 - 7.1 References

Button Specifications:

Color: white
Battery: NO
Power supply: piezoelectric pulse
Transmitting power: 10dBm
Connection to ringing module: 433 MHz
Wireless range: 30m (in open area)
Degree of protection: IP55
Dimensions: 67x19mm
Weight: 36g

Ringer Module Specifications:

Color: White
Audio: 40 ringtones
Protocol: Wi-Fi
Frequency: 2400MHz~2483.5MHz
Maximum RF output power: WiFi: 20dBm
Wireless range: 30m (in open area)
Link to the button: 433 MHz
Power supply: 220 – 240V AC~50/60Hz
Standby power supply (Pnet): 1W
Degree of protection: IP20
Dimensions: 68x31mm (without socket)
Weight: 64g
Package includes: Doorbell, Ringer module for socket, user manual, installation material

IMMAX NEO PRO APP AND DEVICE PAIRING

Scan the QR code and download the Immax NEO PRO app. Or search for and install the Immax NEO PRO app in the App Store or Google Play.
Launch the Immax NEO PRO app and tap “Register” to create your own account via email.
When you are done registering, log in with your account.



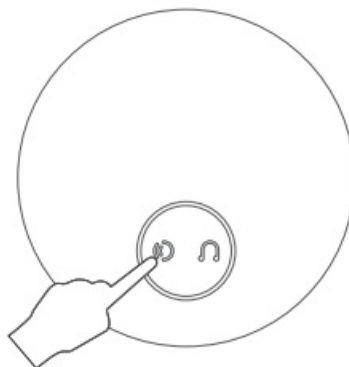
<https://smartapp.tuya.com/immaxneosmart>

GETTING THE RINGTONE MODULE UP AND RUNNING

Remove the ringer module and plug it into a power outlet.

The yellow LED flashes rapidly by default when switched on, unless you reset the device. Make sure your mobile phone is connected to Wi-Fi (the device only supports 2.4GHz Wi-Fi network). Make sure the device is in pairing mode. Open the Immax NEO PRO app and click on the “+” in the top right corner of the app.

Select the type of device you want to add, confirm that the “LED light is blinking fast”. Enter the password for the Wi-Fi network to which your mobile phone is connected. Confirm the password and wait for the device to be added. The device should then appear in the product list.



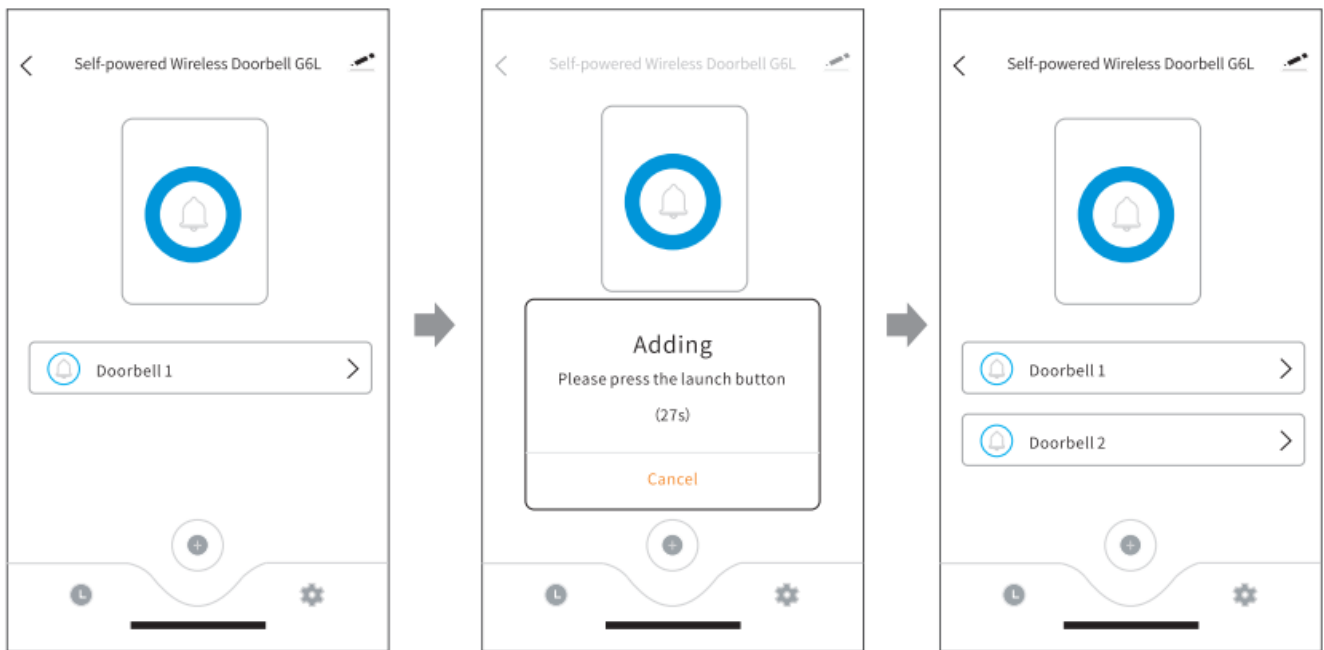
RESETTING THE RINGER MODULE

Press the button for at least 5 seconds. The LED will flash yellow rapidly.

GETTING THE BUTTON TO WORK

This doorbell was already coded before leaving the factory and can be used directly without coding. Coding is only necessary when adding additional buttons or replacing buttons. Through coding, one ringing module can be linked to several buttons or several ringing modules can be linked to one button. To pair, follow the steps below:

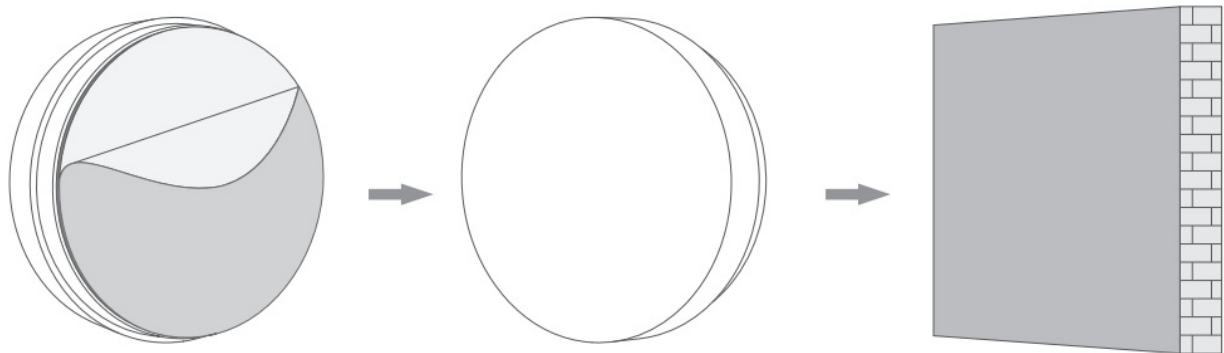
- Open the ringing module tab in Immax NEO PRO. Then click the + button in this tab.
- You will be prompted to press the Add button for that ringing module. After a successful pairing, information about the successful addition of the Button will appear.
- After successful addition, press the Button and the ringing module will ring.



INSTALLING THE BUTTON

Before placing the Button, make sure the Button is within range of the Ring Module.

Please try not to install the Button in metal anti-theft cabinets to avoid causing signal attenuation and affecting transmission distance.



Safety information for this product can be downloaded from www.immax.eu

A Declaration of Conformity has been issued for this product, more information can be found at www.immax.eu

If you have a question or need advice, contact us at support@immax.eu

SETTINGS IN IMMAX NEO PRO

Ringer tone and ringer volume.

Click the ringer icon to display the ringtone setting window, click the left arrow to set the ringtone.

Below you can adjust the ringtone volume.

Ringer mode

- Light and sound mode: press the Button; the ringer flashes and rings
- Sound mode: press the Button; the ringer only rings
- Light mode: press the Button; the ringer flashes only.

In the product tab, click on the icon at the bottom right – Settings. Here you can then time for Do Not Disturb mode and send notification messages.

LED INDICATOR

- The LED indicator flashes orange quickly – the ringer module is in pairing mode (EZ mode)
 - LED indicator flashes slowly orange once every 5 seconds – the ringer is in pairing mode (AP mode)
 - LED indicator flashes fast blue – connecting to WiFi network
 - LED indicator does not light – connected to WiFi network
 - LED indicator not lit – not connected to WiFi network
 - LED indicator flashes slowly orange 1x every 0.8 seconds – WiFi network update
-

Documents / Resources

	Immax NEO 07780L Wireless Replacement Doorbell Button [pdf] User Manual NEO 07780L Wireless Replacement Doorbell Button, NEO 07780L, Wireless Replacement Doorbell Button, Replacement Doorbell Button, Doorbell Button, Button
--	--

References

- [User Manual](#)

[Manuals+](#), [Privacy Policy](#)

This website is an independent publication and is neither affiliated with nor endorsed by any of the trademark owners. The "Bluetooth®" word mark and logos are registered trademarks owned by Bluetooth SIG, Inc. The "Wi-Fi®" word mark and logos are registered trademarks owned by the Wi-Fi Alliance. Any use of these marks on this website does not imply any affiliation with or endorsement.