

Immax
®
**GU10 Ceiling
Wall Spotlight
For Source**



Immax GU10 Ceiling Wall Spotlight For Source Instruction Manual

[Home](#) » [immax](#) » Immax GU10 Ceiling Wall Spotlight For Source Instruction Manual 

Contents

- [1 Immax GU10 Ceiling Wall Spotlight For Source](#)
- [2 Product Usage Instructions](#)
- [3 FAQs](#)
- [4 Technical parameters](#)
- [5 ASSEMBLY INSTRUCTIONS](#)
- [6 Cleaning and Care](#)
- [7 Documents / Resources](#)
 - [7.1 References](#)
- [8 Related Posts](#)



Immax GU10 Ceiling Wall Spotlight For Source



Product Usage Instructions

- **Installation:**

1. Ensure the power source is switched off before installation.
2. Mount the base of the spotlight securely on the ceiling or wall using appropriate screws and tools.
3. Insert GU10 bulbs into the socket and secure them properly.
4. Connect the lamp to the power source (AC 220-240V 50-60Hz).

- **Operation:**

To turn the spotlight on/off, use the existing wall switch or dimmer compatible with GU10 bulbs. Adjust the direction of the spotlight as needed.

- **Maintenance:**

Wipe the surface of the luminaire with a soft cloth or dusting cloth regularly to keep it clean. Avoid using harsh chemicals or abrasive materials.

FAQs

Q: Can I use LED bulbs with this spotlight?

A: Yes, you can use GU10 LED bulbs with a maximum power consumption of 4 x 9W.

Q: Is the lamp suitable for outdoor use?

A: This spotlight is designed for indoor use only.

Q: How do I adjust the direction of the light beam?

A: You can manually adjust the direction of the spotlight by moving its position on the base.

Technical parameters

- **Material:** aluminum, metal, plastic
- **Luminaire color:** matte black
- **Socket:** for GU10 bulbs
- **Power consumption:** max 4 x 9W
- **Input voltage:** AC 220-240V 50-60Hz
- **Dimensions of lamp body:** D5,5 x 9,3cm
- **Base dimensions:** 22 x 22 x 2.5cm
- **Warranty period:** 2 years
- **Package Contents:** Lamp, Installation Instructions

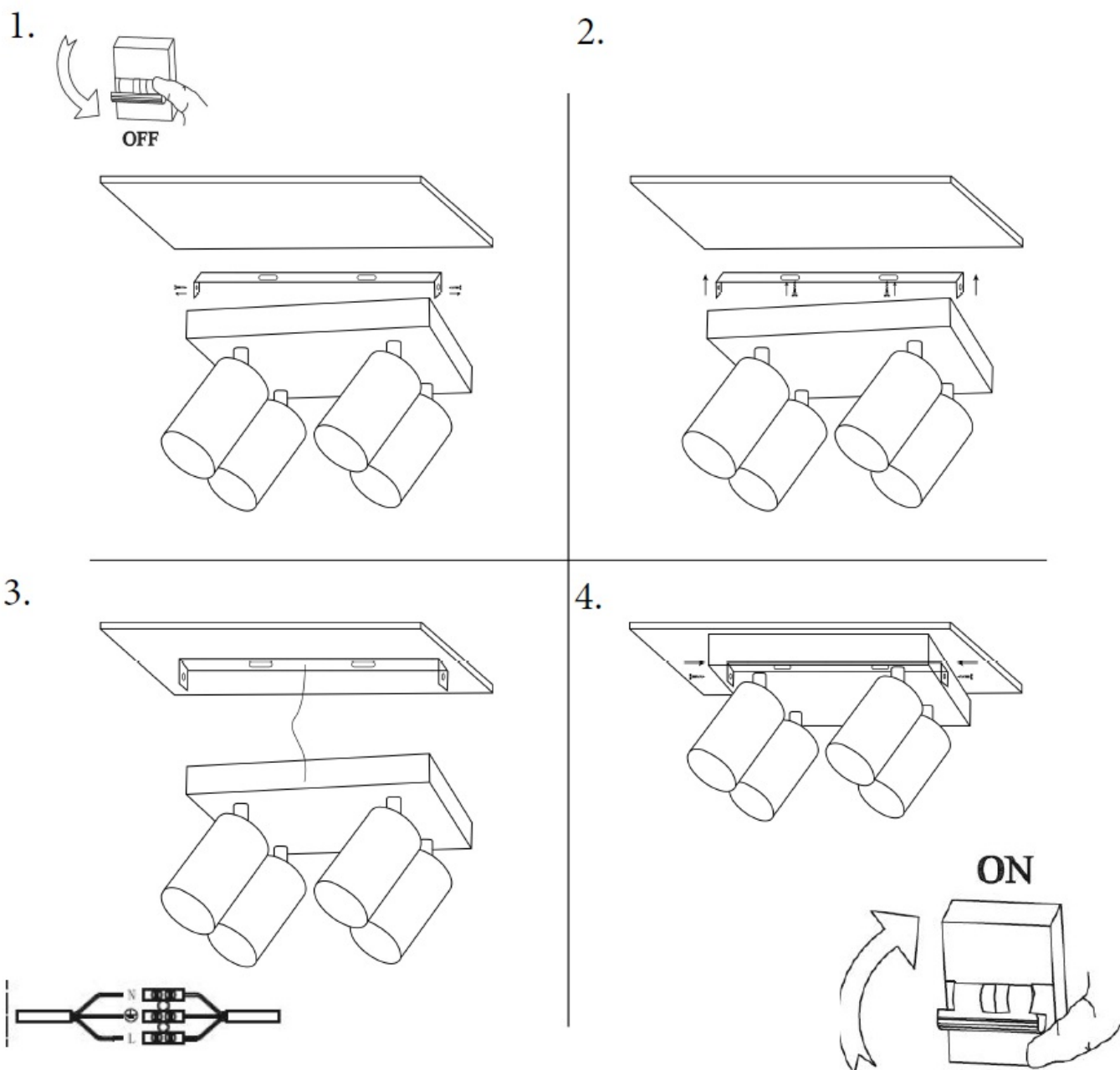
Please read the user manual carefully before using the product and keep it. Keep the user manual for future reference.

Product Data Sheet

- **Note:** The product pictures are for reference only.
- The product picture may show slight differences from the actual product.

ASSEMBLY INSTRUCTIONS

- Switch off the fuses before installing the luminaire.
- To install this product safely, a minimum of 2 persons are required.
- Wiring work must only be carried out by a qualified worker in accordance with EN.
- Unpack the luminaire from its transport packaging and unfold the luminaire on a soft mat
- If you have made sure that the electricity is safely switched off, you can proceed with the actual installation of the luminaire. When installation, follow the attached original picture instructions from the manufacturer.
- Improper installation or tampering with the luminaire will result in termination of the luminaire warranty

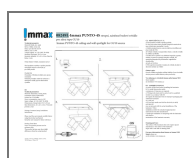


Cleaning and Care

- The surface of the luminaire does not require special maintenance.
- The surface of the luminaire Wipe with a soft cloth or dusting cloth.

For more information about Immax or Immax NEO Smart, please see on the website: www.immax.eu.

Documents / Resources



[Immax GU10 Ceiling Wall Spotlight For Source](#) [pdf] Instruction Manual
GU10 Ceiling Wall Spotlight For Source, GU10, Ceiling Wall Spotlight For Source, Wall Spotlight For Source, Spotlight For Source

References

- [User Manual](#)

Manuals+, Privacy Policy

This website is an independent publication and is neither affiliated with nor endorsed by any of the trademark owners. The "Bluetooth®" word mark and logos are registered trademarks owned by Bluetooth SIG, Inc. The "Wi-Fi®" word mark and logos are registered trademarks owned by the Wi-Fi Alliance. Any use of these marks on this website does not imply any affiliation with or endorsement.