


## IMMAX 07751L Smart socket User Manual

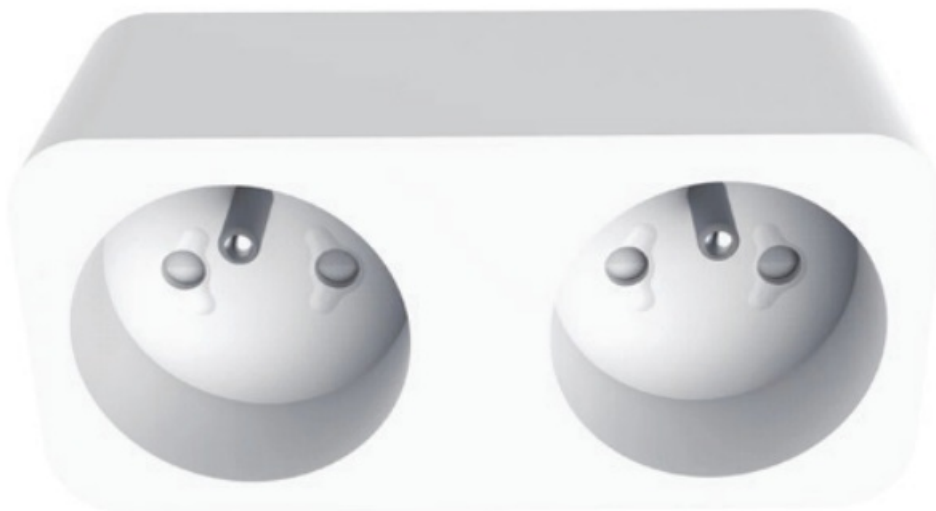
[Home](#) » [immax](#) » IMMAX 07751L Smart socket User Manual 

### Contents

- [1 IMMAX 07751L Smart socket](#)
- [2 Technical specifications](#)
- [3 APPLICATION INSTALLATION AND COMMISSIONING](#)
- [4 Safety Information](#)
- [5 Maintenance](#)
- [6 Documents / Resources](#)
  - [6.1 References](#)
- [7 Related Posts](#)



**IMMAX 07751L Smart socket**



## Technical specifications

- **Color:** white
- **Rated voltage:** AC 110-230V  $\pm$  10%, 50/60 Hz Maximum load: 3680W, 16A
- **Protocol:** Wi-Fi
- **Frequency:** 2400MHz~2483.5MHz
- **Maximum RF output power:** WiFi: 20dBm Wireless distance: 45m (in open space) Working temperature: 0°C ~ 40°C (32°F ~ 104°F) Working humidity: 20% ~ 85%
- **Functions in the application:** ON / OFF, Timer, Countdown, Consumption measurement
- **Size:** 81mm x 48mm x 104mm



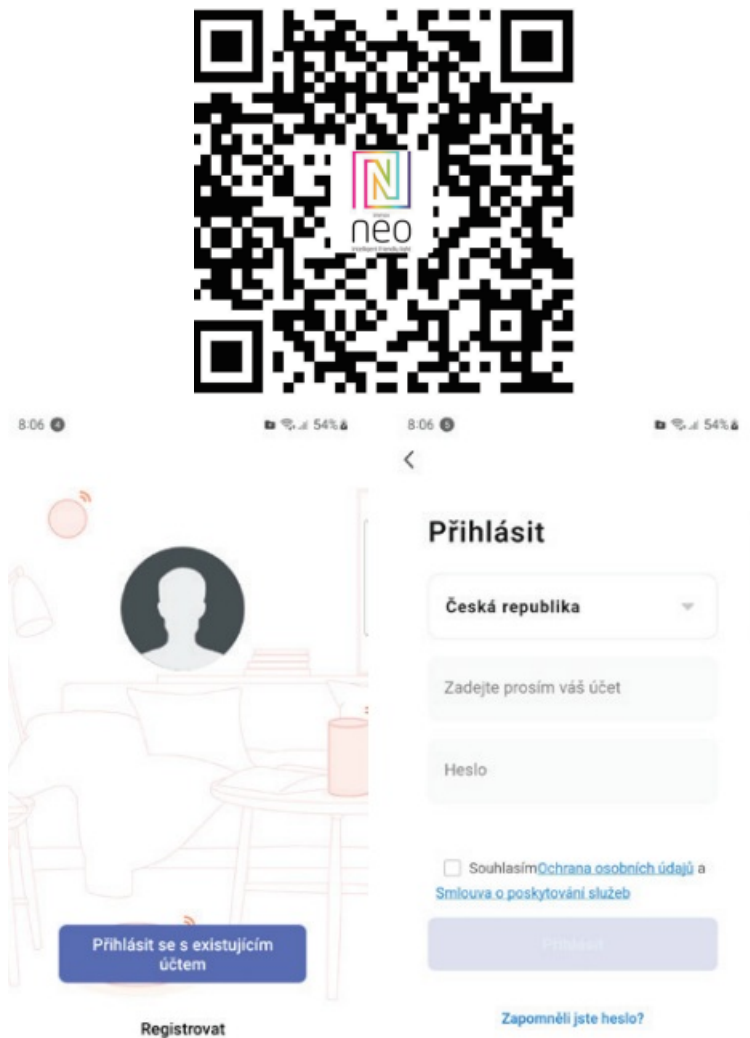
## HOW TO RESET THE SMART SOCKET?

1. Press the reset button for 6 seconds until the LED indicator flashes quickly. The smart socket is switched to the basic pairing mode.
2. Press the reset button again for 6 seconds until the LED indicator flashes slowly. The device switches to AP mode.

## APPLICATION INSTALLATION AND COMMISSIONING

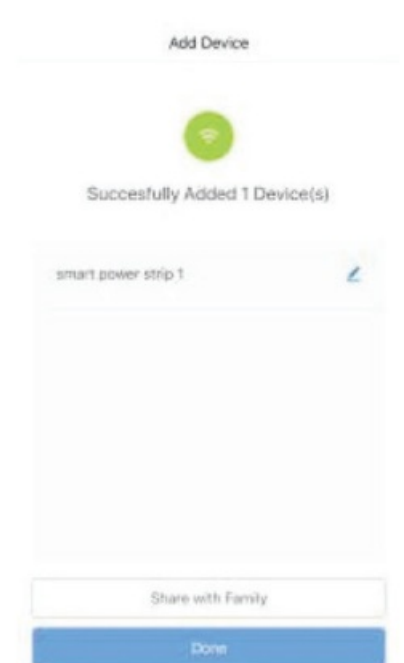
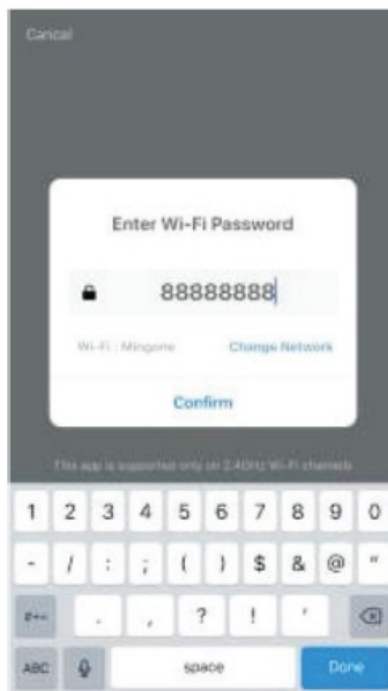
### Step1: Download&Registration

Scan the QC Code to download “ Smart Life” APP. Or Search“Smart Life”in Apple store or Google Play to install the APP. Open the “ Smart Life” APP, tap “Register”-to get an account with your phone number or E-mail. Sign in the APP.



## Step2: Add Decices in Easy Mode ( Recommend )

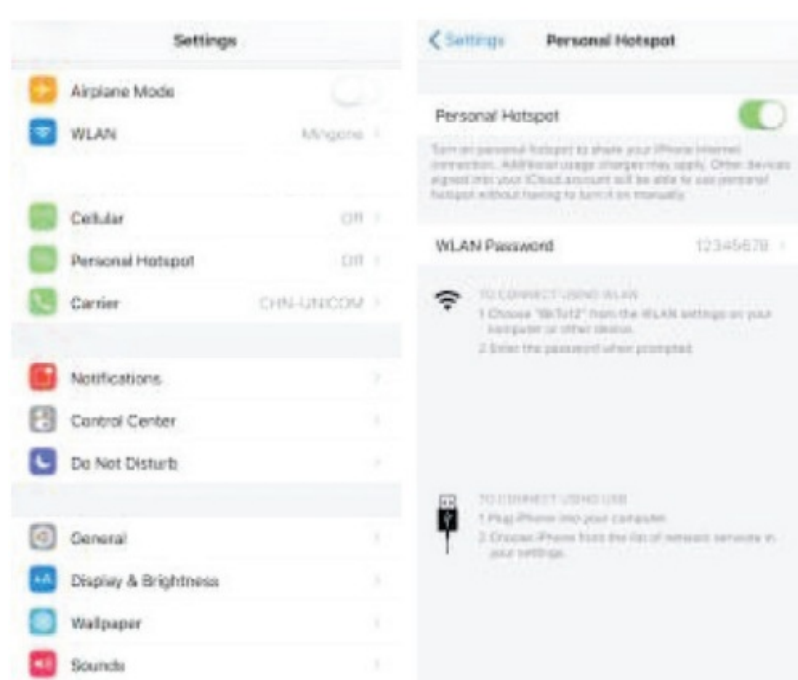
- Make sure your product is powered on
- Make sure your mobile phone is connected to your Wi-Fi
- Press the power button until the indicator begin to flash quickly (about 2times/second),this means the device is already for configuration
- Open your “ Smart Life” APP, tap “+” on the top right of the APP
- Select Device Type, tap “ confirm indicator rapidly blink”. It will fetch the password of the Wi-Fi network your mobile phone connected.
- Tap “Confirm” to connect to the device, when it appears “ successfully add 1de-vice”, then the connection is completed and your devices is listed in your APP list.

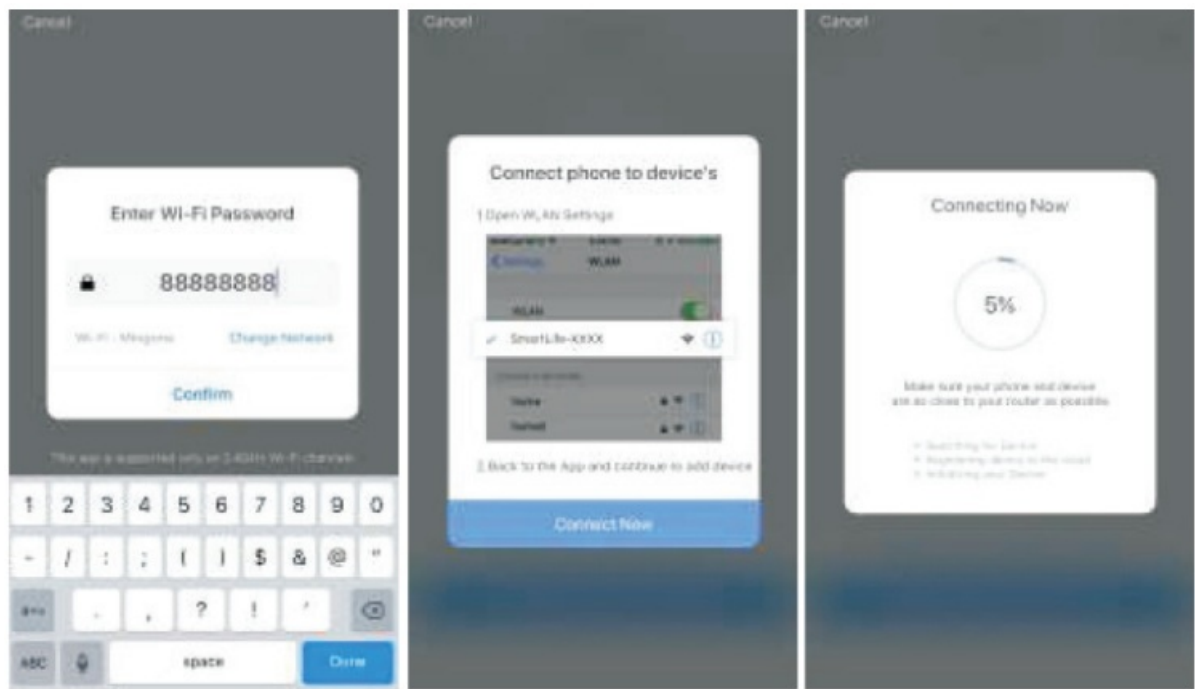


**Add Devices in AP Mode (If failed in Easy Mode,user could use AP mode):** Press the power button for more than 5seconds until the indicator begin to flash quickly, then press it for another 5seconds until the indicator flash slowly.

- Tap “+” on the top right of the APP,Select Device Type
- Tap “ AP Mode ” on the top right,“confirm indicator slowly blink”. It will fetch the password of the Wi-Fi network your mobile phone connected.
- Tap “Confirm” and “connect now”to go to the WLAN setting interface in your mobile phone. Select the Wi-Fi network named “ Smart Life\_XXX” to connect it. Return to the “ Smart Life” APP, the connection will start automatically

When it appears “ successfully add 1device”, then the connection is completed and your devices is listed in your APP list.





**Step3:** Control your product Immax NEO via smart life APP anytime and anywhere (make sure your mobile phone and Mini Smart Plug are all connected to the network), More functions you will enjoy refer to the APP interface.

## Safety Information

**CAUTION:** Keep out of reach of children. This product contains small parts, which may cause suffocation or injury if swallowed.

**WARNING:** Every battery has the potential to leak harmful chemicals that can damage skin, clothing or area where the battery is stored. To avoid the risk of injury, do not allow any substance from the battery to come into contact with the eyes or skin. Every battery may burst or even explode if exposed to fire or other forms of excessive heat. Take care when handling the batteries. To reduce the risk of injury from mishandling the batteries, take the following precautions:

- Do not use different brands and types of batteries in the same device
- When replacing the batteries, always replace all the batteries in the device
- Do not use rechargeable or reusable batteries.
- Do not allow children to insert batteries without supervision.
- Follow the battery manufacturer's instructions for proper battery handling and disposal.

**CAUTION:** The product and batteries should be disposed of at a recycling centre. Do not dispose of them with normal household waste. To ensure safe use of the product, wires must be brought at the installation site according to valid regulations. The installation must only be carried out by an individual with the appropriate certification in the field of electronics. During installation or when a fault is detected, the power cable must always be disconnected from the socket (in the case of direct connection, the relevant circuit breaker must be switched off). Improper installation can damage the product and cause injury.

**CAUTION:** Do not disassemble the product, electric shock may occur. **CAUTION:** Use only the original power adapter provided with the product. Do not operate the device if the power cord shows signs of damage. **CAUTION:** Follow the instructions in the enclosed manual.

## Maintenance


Protect the device from contamination and soiling. Wipe the device with a soft cloth, do not use rough or coarse

materials.

**DO NOT USE** solvents or other aggressive cleaners or chemicals.

A Declaration of Conformity has been issued for this product. More information can be found at [www.immax.cz](http://www.immax.cz)

## Documents / Resources

	<p><b><a href="#">IMMAX 07751L Smart socket</a></b> [pdf] User Manual 07751L Smart socket, 07751L, Smart socket, socket</p>
---	---

## References

-  [Velkoobchod s LED technikou IMMAX | Immax.cz](#)
-  [Velkoobchod s LED technikou IMMAX | Immax.cz](#)
-  [Velkoobchod s LED technikou IMMAX | Immax.cz](#)

Manuals+