



Immax NEO Smart Indoor Socket Without Pin User Manual

[Home](#) » [immax neo](#) » Immax NEO Smart Indoor Socket Without Pin User Manual 



Immax NEO Smart indoor socket without pin,
type F, 1xUSB, 1xUSB C, PD 20W, Zigbee

Contents

- 1 TECHNICAL SPECIFICATIONS:
- 2 LED INDICATOR DESCRIPTION
- 3 DEV ICE RESET
- 4 SOCKET INSTALLATION
- 5 START-UP
- 6 UNPAIRING A DEVICE FROM THE IMMAX NEO PRO SMART GATEWAY
- 7 SAFETY INFORMATION
- 8 MAINTENANCE
- 9 Documents / Resources
 - 9.1 References

TECHNICAL SPECIFICATIONS:

Color: white

Rated voltage: AC 230V \pm 10% , 50/60 Hz

Maximum load: 3000W, 16A

USB output: 20W

Power delivery: Yes

USB-A: DC5V/3A, 9V/2A, 12V/1.5A

USB-C: DC5V/3A, 9V/2.22A, 12V/1.67A

USB-A + USB-C: 5V/3.4A Max

Surge protection: 255V

Mains standby power (Pnet): 1W

Zigbee repeater: YES

Protocol: Zigbee

Frequency: 2400MHz~2483.5MHz

Maximum RF output Power: Zigbee:10dBm – max 19dBm

Wireless distance: 30m (in open space)

Working temperature: 0°C ~ 40°C (32°F ~ 104°F)

Working humidity: 20% ~ 85%

Functions in the app: ON/OFF, Timer, Countdown, Consumption measurement

Size: 8.5cm x 8.5cm x 4.5cm

Weight: 125g

Package content: Internal socket, user manual

LED INDICATOR DESCRIPTION

LED lights up red: the socket is in the on state

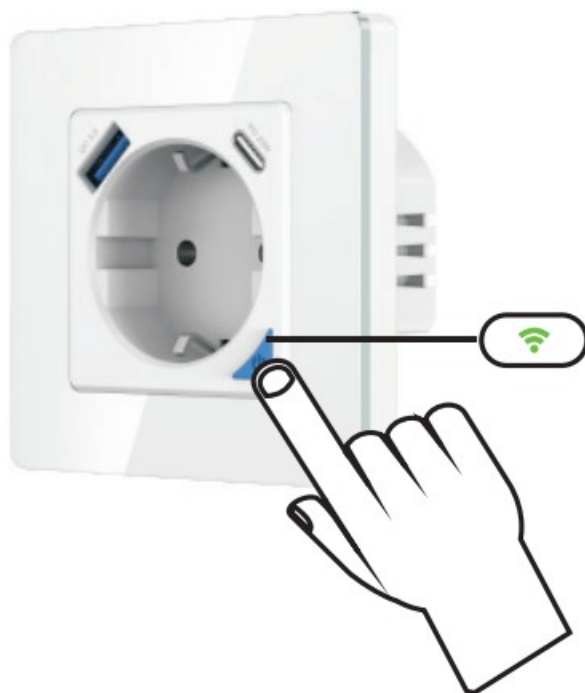
LED is off: the socket is off

LED is flashing green: the socket is in pairing mode

LED notification of power on or off may vary depending on individual settings in the app.

DEV ICE RESET

Press and hold the On/Off button on the socket for at least 10 seconds until the LED indicator starts flashing green.



SOCKET INSTALLATION

Important Safety Information!

Only qualified electrical personnel should install and maintain the device.

Do not touch the device terminals during testing.

Turn off all household power before installation.

Make sure the power source is off before connecting or disconnecting any additional equipment.

Always use a properly rated voltage sensing device to ensure that the power is off.

Connect the phase wire (brown) to the L connector.

Connect the neutral wire (blue) to the N connector.

Connect the protective conductor Pe (green-yellow) to the connector with the grounding symbol.

The Immax NEO PRO smart gateway serves as a hub for communication between your mobile device and other smart devices communicating on the Zigbee 3.0 protocol.

Any other use is considered inappropriate. All claims arising from improper use or unauthorized modification of the product will be considered unauthorized. Any such use is at your own risk.

PAIRING IMMAX NEO LED LIGHT SOURCES WITH THE IMMAX NEO APP ON MOBILE DEVICES



<https://smartapp.tuya.com/immaxneosmart>

Note:

You may encounter minor discrepancies in the Android and iOS versions of the application, such as slightly different commands or icons, but the principle of operation is the same.

Firmware updates may result in changes to the functionality of the application.

START-UP

1. Connect the socket to the mains.
2. If the LED indicator on the socket is not flashing, press the On/Off button for at least 10 seconds.
3. Make sure that the LED indicator on the socket is flashing quickly.
4. Everything is ready for pairing.
5. Open the Immax NEO PRO application.
6. Click on the "Room" icon.
7. Click on the "+" icon to add a new device.
8. Select the Immax NEO category in the left column.
9. Select Smart socket (zigbee) from the products offered
10. Select the smart gateway with which you want to pair this device (note: this is necessary if you have more than one Immax NEO PRO smart gateway).
11. Click on the "Next step" icon.
12. Confirm that the LED indicator is flashing quickly
13. Click on the "Next step" icon.
14. Wait for the device to be properly paired with the Immax NEO PRO smart gateway.
15. Enter the device name.
16. Select the room where you want the device to be located.
17. Click "Done".

UNPAIRING A DEVICE FROM THE IMMAX NEO PRO SMART GATEWAY

1. Open the Immax NEO PRO app
2. Click the "Room" icon
3. Select the device you want to unpair
4. Click the "Settings" icon in the upper right corner
5. Click "Remove device"
6. Select one of the options
 - a) Disconnect – removes the device from the Immax NEO PRO app, but the device information will remain stored in the Immax NEO cloud
 - b) Disconnect and erase data – removes the device from the Immax NEO PRO app and the Immax NEO cloud
7. Confirm device removal

SAFETY INFORMATION

WARNING: Keep out of reach of children. This product contains small parts that can cause choking or injury if swallowed.

WARNING: Each battery has the potential to release harmful chemicals that can damage skin, clothing, or the area where the battery is stored.

To avoid the risk of injury, do not allow any substance from the battery to come into contact with your eyes or skin. Each battery can rupture or even explode if exposed to fire or other forms of excessive heat. Exercise caution when handling batteries. To reduce the risk of injury or damage from battery mishandling, take the following precautions:

- Do not use different brands and types of batteries in the same device
- Always replace all batteries in the device when replacing batteries
- Do not use rechargeable or reusable batteries.

- Do not allow children to install batteries without supervision.
- Follow the battery manufacturer's instructions for proper battery handling and disposal.

WARNING: The product and batteries should be disposed of at a recycling center.

Do not dispose of with normal household waste.

WARNING: To ensure safe use of the product, it is necessary to lay wires at the installation site in accordance with applicable regulations. Installation must be carried out only by a person with the appropriate electrical certification.

During installation or when a fault is detected, the power cable must always be disconnected from the socket (in the case of direct connection, the appropriate circuit breaker must be turned off). Incorrect installation can damage the product and cause injury.

WARNING: Do not disassemble the product, there is a risk of electric shock.

WARNING: Use only the original power adapter supplied with the product.

Do not operate the device if the power cable shows signs of damage.

WARNING: Follow the instructions in the enclosed manual.

MAINTENANCE

Protect the device from contamination and dirt. Wipe the device with a soft cloth, do not use rough or coarse material.

DO NOT use solvents or other aggressive cleaners or chemicals.

A Declaration of Conformity has been issued for this product, more information can be found at www.immax.cz

Abridged version of the Declaration of Conformity

Hereby, the manufacturer IMMAX declares that the radio equipment type 07801L is in compliance with Directive 2014/53/EU. The full text of the EU Declaration of Conformity is available on the following websites:


www.immax.cz, www.immax.eu

You can download the safety information for this product from www.immax.cz

If you have any questions or need advice, please contact us at podpora@immaxneo.cz.

NOTES



The symbol  indicates that the product must not be disposed of with municipal waste. For proper disposal of the product, please hand it in at designated collection points.

When disposing of the device, remove the batteries and bulbs – if possible, hand in the old device at designated collection points; it does not belong in the municipal waste stream.

Waste electrical and electronic equipment from private households can be handed in free of charge at public collection points. As the end user, you are responsible for erasing personal data from your old device

ASEKOL: AK-016010, WEEE-Reg.-No DE 88927148



Manufacturer and importer:

IMMAX, Teslova 1179/2, 702 00 Ostrava-Přívov, EU

www.immaxneo.cz | www.immaxneo.com

Made in P.R.C.

Documents / Resources



[Immax NEO Smart Indoor Socket Without Pin](#) [pdf] User Manual
Smart Indoor Socket Without Pin, Indoor Socket Without Pin, Socket Without Pin, Without Pin

References

- [User Manual](#)

[Manuals+.](#) [Privacy Policy](#)

This website is an independent publication and is neither affiliated with nor endorsed by any of the trademark owners. The "Bluetooth®" word mark and logos are registered trademarks owned by Bluetooth SIG, Inc. The "Wi-Fi®" word mark and logos are registered trademarks owned by the Wi-Fi Alliance. Any use of these marks on this website does not imply any affiliation with or endorsement.