



imin D2-402 Smart POS Device User Manual

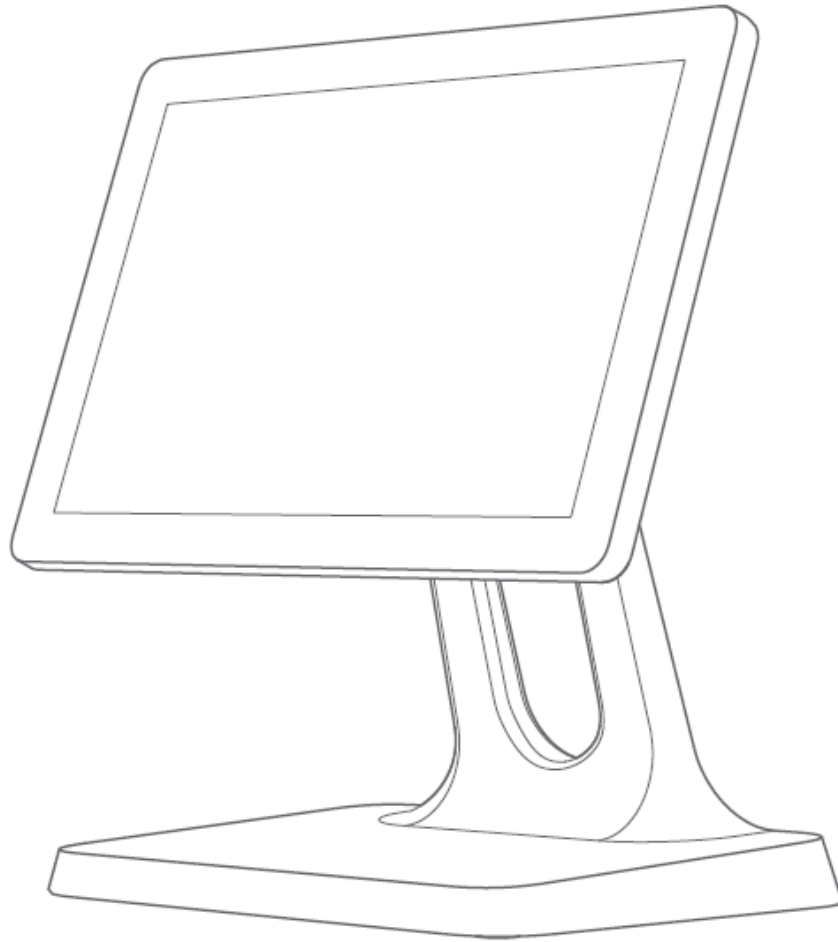
[Home](#) » [imin](#) » imin D2-402 Smart POS Device User Manual 

Contents

- [1 imin D2-402 Smart POS Device](#)
- [2 Easy Set-Up](#)
- [3 Brief Introduction](#)
- [4 Technical Specifications](#)
- [5 Packing Content](#)
- [6 Safety Information](#)
- [7 FCC Warning](#)
- [8 Radiation Exposure Statement](#)
- [9 Documents / Resources](#)
- [10 Related Posts](#)



imin D2-402 Smart POS Device



Easy Set-Up

Turn on the device in just a few steps.

1. Press the power button and wait for the screen to light up showing the first boot up interface, then follow the prompts. You may choose the following 2 internet access modes on this device.

Connecting to Wi-Fi or WLAN

- Click on [Settings], turn on Wi-Fi to enter the WLAN search interface, and search available WLAN hotspots listing automatically.
- Select the WLAN you wish to connect. If you chose an encrypted network, you need to enter the access password to connect successfully.

How to Download/ Use Apps

Launch Application Store under online mode to browse, download and complete installation for relevant Apps.

List of Pre-Installed Apps and System Programs

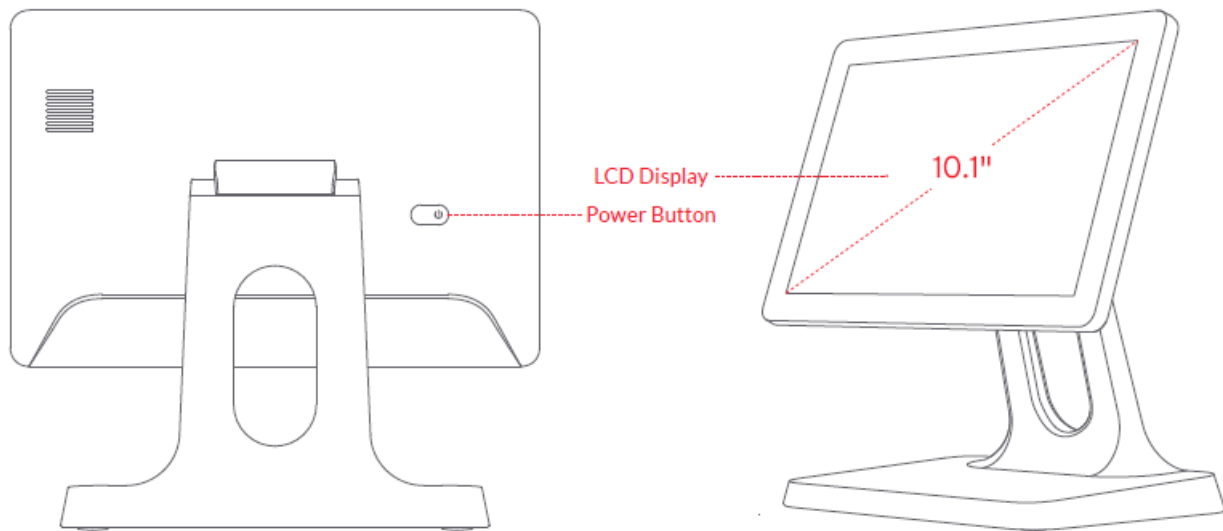
- Public Wi-Fi · Scanner SDK · Starter Kit · OTA · Volume Button Customisation · Calculator · Settings · Music
- Download

To learn more: Choose "Setup" -> "Application" and select the application you wish to enquire about To unload/

uninstall a specific application: Choose “Setup” -> “Application” -> “Management Application” -> “Unloading” to uninstall the application. Alternatively, long press on the application icon and drag it to the trash can to uninstall.

Launch the “Help” app on the device to learn more or refer to these steps again.

Brief Introduction

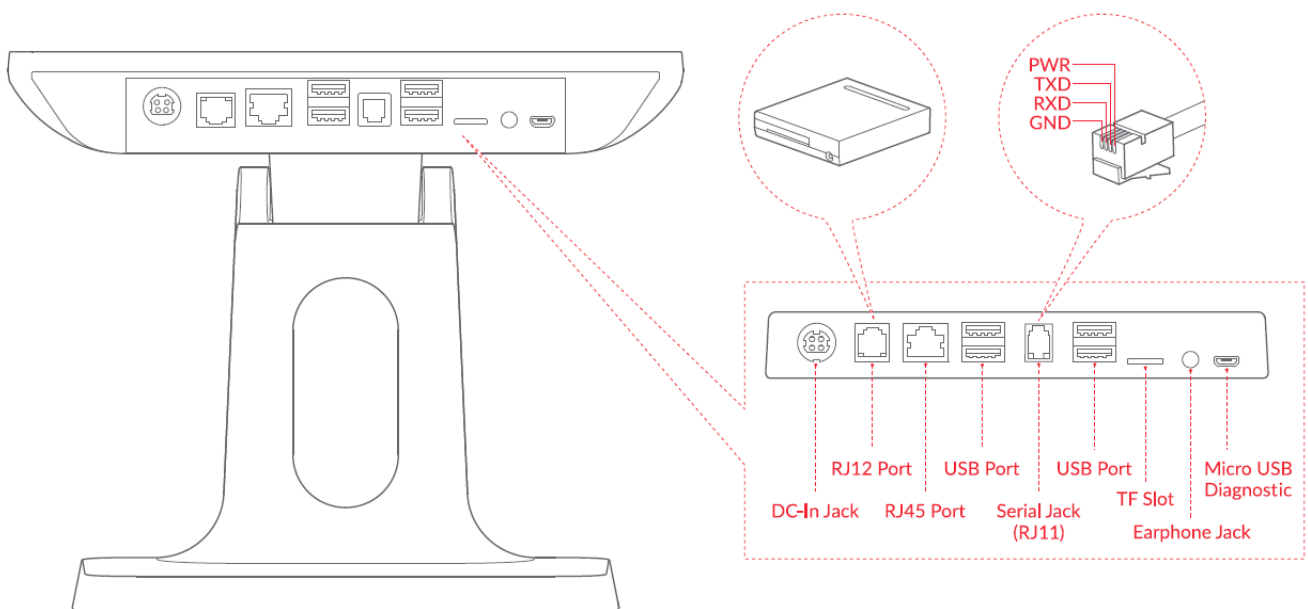


LCD Display

Provide a touch screen for the operator.

Power Button

Start up: Short press the button when the machine is in power-off mode. Power off/ restart: Long press on button 2-3 seconds to choose either option when the machine is in power-on mode. Power off (alternative): Press the button for 11 seconds when the machine is in power-on mode.



DC-In Jack

For connecting power adapter.

RJ12 Port

For connecting external cash box (electrical pulse 120ms output instead of the sustained power supply)

RJ45 Port

For connecting to the internet or LAN

USB Port

For connecting printer or peripherals with USB Type-A interface.

TF Slot

For inserting external TF card.

Micro USB Diagnostic/ Debugging Port

For connecting diagnostic or debugging equipment.

Technical Specifications

OS	Android 11
CPU	Quad-core Cortex-A55 up to 1.8GHz
LCD Display	10.1” resolution: 800 x 1280, Multi-points capacitive touch panel
Storage	2GB RAM + 8GB ROM (optional 16GB)
Wi-Fi	802.11 b/g/n (2.4GHz)
Bluetooth	Bluetooth 4.2
Speaker	1 x 1.5W
External Interface	4 x USB Type-A, 1 x RJ11, 1 x RJ12 (24V), 1 x RJ45, 1 x Earphone, 1 x DC-In, 1 x Micro-USB
External SD Card	MicroSD (TF) up to 128GB
Dimensions	25.1cm x 15.4 cm x 24.7cm
Power Adapter	Output power 36W, Input: AC100~240V/1.5A, Output: DC24V/1.5A
Operating Temperature	-10°C~+40°C
Storage Temperature	-10°C~+50°C
Operating Humidity	10% to 90% r.H.
Altitude Limit	Max. 5000 meters

Name and Content of Toxic and Harmful Substances in This Product

Part Name	Toxic or Harmful Substances and Elements					
	Plumbum (Pb)	Mercury (Hg)	Cadmium (Cd)	Chromium VII (Cr(VII))	Polybrominated biphenyl (Cr(VII))	Polybrominated diphenyl ethers (PBDE)
Circuit Board	×	○	○	○	○	○

- This means that the content of the toxic and harmful substances in all homogeneous materials of the component is below the limit specified in SJ/ t113363-2006.
- This means that the content of the toxic and hazardous substances at least in a homogenous material of the component exceeds the limit specified in SJ/ t113363-2006. However, the components marked with " " in the above table are out of proportion because there is no mature alternative technology in the industry at present.

Products that have reached or exceeded the environmental protection service life should be recycled and reused in accordance with the electronic information products control and management measures or local environmental laws and guidelines. They should not be discarded at will or with household waste.

Product Warranty Card	
Model No.: D2-402	iMin does not warrant against the following: · Disassembled or repaired product by unauthorised service provider without our consent. · Damaged product barcode, fragile sticker and altered or defective warranty card. · Damage caused by non-compliance with instructions in this user manual. · Damage caused by exposure to sources of liquid, dripping or splashing, normal wear and tear, accident or abuse. · Failure or damage as a result of any Force Majeure Event. · Expired warranty period.
Serial No.: _____	
Purchase Date: _____	
Warranty Period: The warranty period commences on the date of purchase. We offer 365 days warranty service.	
User Phone: _____	
User Address: _____	

Packing Content

- Device x 1
- Power Adapter x 1, Power Cable x 1
- User Manual x 1

Qualification Certificate Passed Inspection

Safety Information

Safety and Handling

- Please plug-in power adapter to only its corresponding AC socket.
- Do not use in explosive gas atmosphere.
- Do not disassemble the equipment. It should be serviced or recycled only by iMin or an authorized service provider.
- This is a Grade B product. The product may cause radio interference and interfere with medical devices. The user may be required to take practical measures to reduce the possibility of causing interference to radios, televisions and other electronic devices.
- About the battery replacement:
 1. Do not attempt to replace the battery yourself – you may damage the battery, which could cause overheating, fire and injury.
 2. The replaced/ used battery should be disposed of according to local environmental laws and guidelines. Do not dispose in fire. It should be serviced or recycled by iMin or an authorized service provider and

must be recycled or disposed of separately from household waste.

Company Statement

Our company is not responsible for the following actions:

- Damage caused by misuse, lack of care in maintaining the equipment, or placing the device under conditions that may cause undesired operation and risk as specified in this instruction manual.
- We will not be responsible for any damage or problem caused by third-party parts or components (other than the original products or approved products provided by us). Without our consent, you have no right to modify or alter the products.
- The operating system of this product is supported by official regular OS updates. If the user breached the third party's ROM system or change the system file by hacking, it may cause unstable, undesired system operation and bring security risk.

Advice

- Do not expose the device to moisture, dampness, or wet weather, such as rain, snow or fog.
- Do not use the device in extremely cold or hot environments eg, near an fire or lit cigarette.
- Do not topple, throw, or bend.
- Use in an optimally clean and dust-free environment to avoid tiny particles clogging and seeping through gaps in the device.
- Do not attempt to use the device near medical equipment.

Important Safety Information

- Do not install or use during thunderstorms and lightning conditions, otherwise, there will be risk of electric shock, injury or death in the event of thunder or lightning hit.
- If you find an unusual odor, overheating or smoke, please cut off the power immediately.
- Do not expose the device to moisture, dampness, or wet weather, such as rain, snow or fog; Do not use in an explosive gas atmosphere.

Disclaimer

Due to regular updates and enhancements made to the product, some details of this document may be inconsistent with the physical product. Please take the product you received as the current standard. The right to interpret this document belongs to our company. We reserve the right to amend this specification without prior notice.

FCC Warning

This device complies with part 15 of the FCC rules. Operation is subject to the following two conditions: (1) this device may not cause harmful interference, and (2) this device must accept any interference received, including interference that may cause undesired operation. Changes or modifications not expressly approved by the party responsible for compliance could void the user's authority to operate the equipment.

NOTE: This equipment has been tested and found to comply with the limits for a Class B digital device, pursuant to part 15 of the FCC Rules. These limits are designed to provide reasonable protection against harmful interference in a residential installation. This equipment generates uses and can radiate radio frequency energy and, if not installed and used in accordance with the instructions, may cause harmful interference to radio communications. However, there is no guarantee that interference will not occur in a particular installation. If this

equipment does cause harmful interference to radio or television reception, which can be determined by turning the equipment off and on, the user is encouraged to try to correct the interference by one or more of the following measures:

- Reorient or relocate the receiving antenna.
- Increase the separation between the equipment and receiver.
- Connect the equipment into an outlet on a circuit different from that to which the receiver is connected.
- Consult the dealer or an experienced radio/TV technician for help.

Radiation Exposure Statement

This equipment complies with FCC radiation exposure limits set forth for an uncontrolled environment. This equipment should be installed and operated with minimum distance 20cm between the radiator and your body.

Documents / Resources

	imin D2-402 Smart POS Device [pdf] User Manual D2-402, D2402, 2AYD5-D2-402, 2AYD5D2402, D2-402 Smart POS Device, Smart POS Device
-----------------------------------------------------------------------------------	------------------------------------------------------------------------------------------------------------------------------------------------------