



imation IMCD100 CHARGING DOCK User Guide

[Home](#) » [imation](#) » imation IMCD100 CHARGING DOCK User Guide 

Contents

- [1 imation IMCD100 CHARGING DOCK](#)
- [2 imation Charging Dock Quick Start Guide](#)
- [3 How to connect](#)
- [4 Product Specification](#)
- [5 FCC Statement](#)
- [6 Documents / Resources](#)
- [7 Related Posts](#)

imation

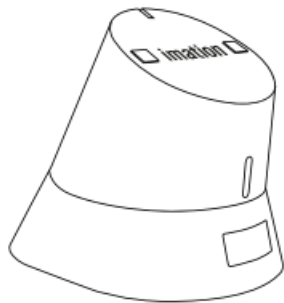
imation IMCD100 CHARGING DOCK



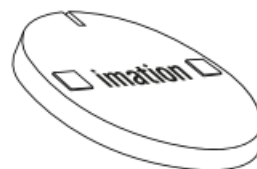
imation Charging Dock Quick Start Guide

Thank you for purchasing Imation Charging Dock. Please refer below for installation guide of proper installation and warranty policy

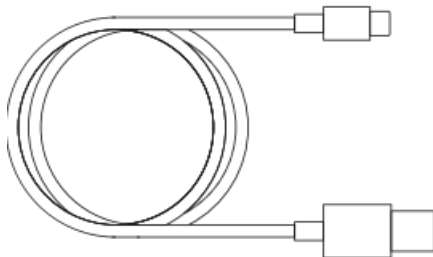
The components



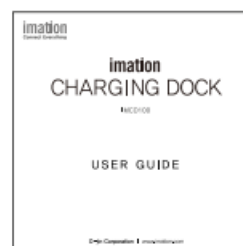
Imation Charging Dock x 1



Cap for charging x 1



Cable (USB A to C) x1



Quick Start Guide x 1

How to connect

1. Cable connection -Connect imalion charging dock to ! the computer with an enclosed USB Type-C cable.

2. Replacing a charging module – Remove the charging cap at the bottom of the mouse and put it on the enclosed charging cap in the same pace.
3. Charging Mouse – Place the mouse on imation Charging Dock properly.
4. Reducing Delays – Plunge! the USB receiver of ! the mouse on the USB port on imation Charging Dock.
5. Charging confirmation -If ! the mouse is charging correctly, ! the LED of imalion Charging Dock will be red.

Compatibility

G403 PRODIGY. G502.

G703, G903. G703 HERO. G903 HERO.

WIRELESS

Please note imalion Charging Dock is compatible for only wireless rechargeable mouse.

LED STATUS

Standby Mode – White Charging Mode – Red Complete Charging – White

Precautions

1 . Do not strike, bend, drop, wet or apply excessive force to imation Charging Dock.

This may cause data losses or damages to the product

2. Do not disassemble or damage Imation Charging Dock. If imation Charging Dock has been disassembled by user. all warranties will be void.

Warranty Policy

imation Charging Dock covered by 1 year limited warranty from the original purchase date. Pursuant to !The terms of imalion warranty policy. imation will provide proper warranty service or product fail under normal use. For !The produces !That are out-of-warranty period hereunder, imation may refuse to provide any warranty service. Product customer service will be varied by region or country, If the product service s not available, please contact resellers.

Warranty Limitations

The warranty s1a1ed herein does not apply if any product failure caused by

1. Act of improper use such as prolonged exposure to
2. Malfunction of other equipment
3. Acts of nature
4. Defects or damages from moving or dropping alter purchase
5. Damaged connector or cable – Operational Humidity: RH 7Cflo I Temperature : 0–.. 70t

Warning and Precautions

imation is not responsible for any cost caused by defects or damages of products from misuse or neglect.

Product Specification

Rated Input	5V = 0.5A
interface	USB 2.0 Type C
Operational Temperature	0~c to 70~c
Physical Dimension(LxWxH)	62.5mm x 45.5mm x 52mm
Weight	70g

Drawn	Check	Approval	Unit	mm	Model Name	Power_Dock
		S. Lee	Scale	1,000	Part Name	OSG
		2021.10.15	Size	A3	Material	Smili Paper (모조지)
GENERAL TOLERANCE (`)			Q'ty	1EA	Part No.	
TYPE	DIM	0~10	10~50	50~120	120~250	250~
A		0.05	0.07	0.1	0.15	0.2
imation			Sheet		DWG No.	

FCC Statement

This device complies with part 15 of the FCC Rules. Operation is subject to the following two conditions:

1. This device may not cause harmful interference, and
 2. this device must accept any interference received, including interference that may cause undesired operation.
- My changes or modifications (including the antennas) to this device that are not expressly approved by the manufacturer may void the user's authority to operate the equipment.

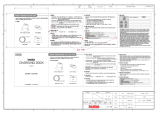
Note : This equipment has been tested and found to comply with the limits for a Class B digital device, pursuant to part 15 of the FCC Rules. These limits are designed to provide reasonable protection against harmful interference in a residential installation. This equipment generates uses and can radiate radio frequency energy and, if not installed and used in accordance with the instructions, may cause ham, full interference to radio communications, However, there is no guarantee that interference will not occur in a particular installation. If this equipment does cause harmful interference to radio or television reception, which can be determined by turning the equipment off and on, the user is encouraged to try to correct the interference by one or more of the following measures:

- Reorient or relocate the receiving antenna.
- Increase the separation between the equipment and receiver.
- Connect the equipment into an outlet on a circuit different from that to which the receiver is connected.
- Consult the dealer or an experienced radio/TV technician for help.

Modifications not expressly approved by the manufacturer could void your authority to operate the equipment under FCC rules.

Corporation I www.imation.com

Documents / Resources



[imation IMCD100 CHARGING DOCK](#) [pdf] User Guide
IMCD100, 2A3ZZ-IMCD100, 2A3ZZIMCD100, CHARGING DOCK