



# Image Engineering iQ-LED Control Software User Guide

[Home](#) » [Image Engineering](#) » Image Engineering iQ-LED Control Software User Guide

## Contents [ [hide](#) ]

- 1 Image Engineering iQ-LED Control Software
- 2 Getting Started
- 3 Calibration
  - 3.1 Second step – iQ-LED device settings
- 4 Predefined Illuminants/Store on Device
- 5 Creating Illuminants
- 6 Contact
- 7 Documents / Resources
  - 7.1 References
- 8 Related Posts

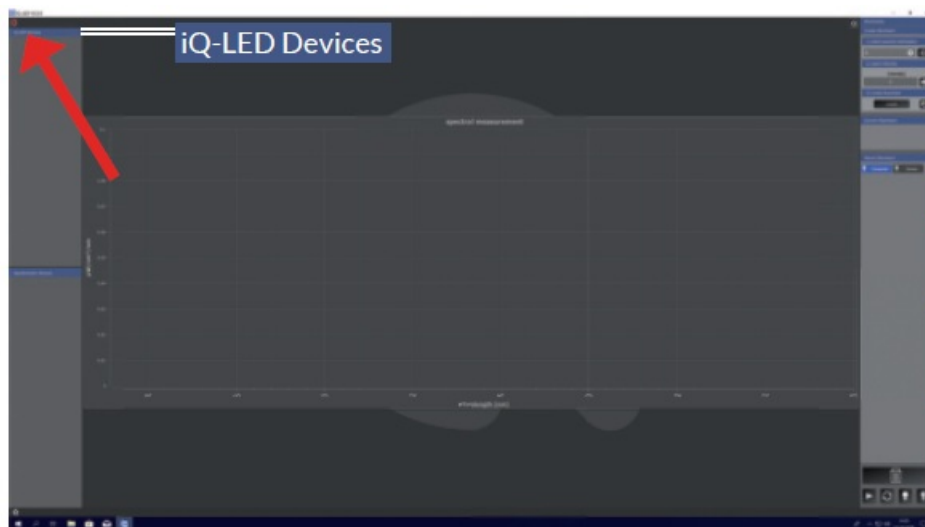
## Image Engineering

### Image Engineering iQ-LED Control Software

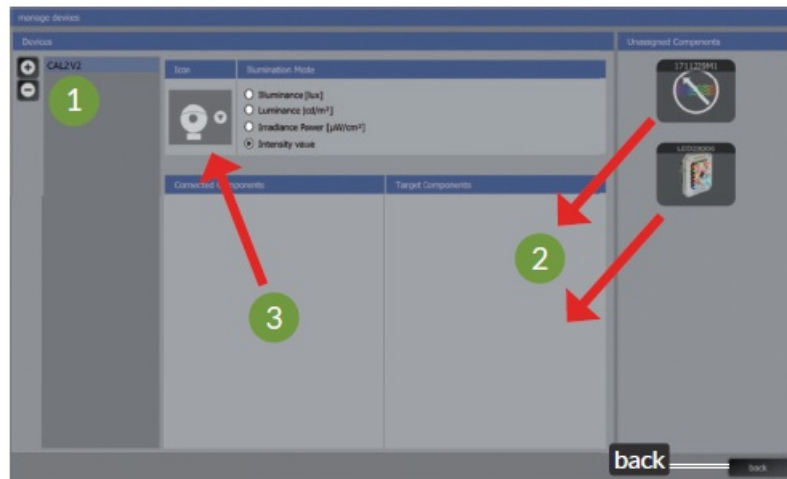


## Getting Started

Connect the iQ-LED device with the included spectrometer via USB to your computer and start the “iQLED Control” software.

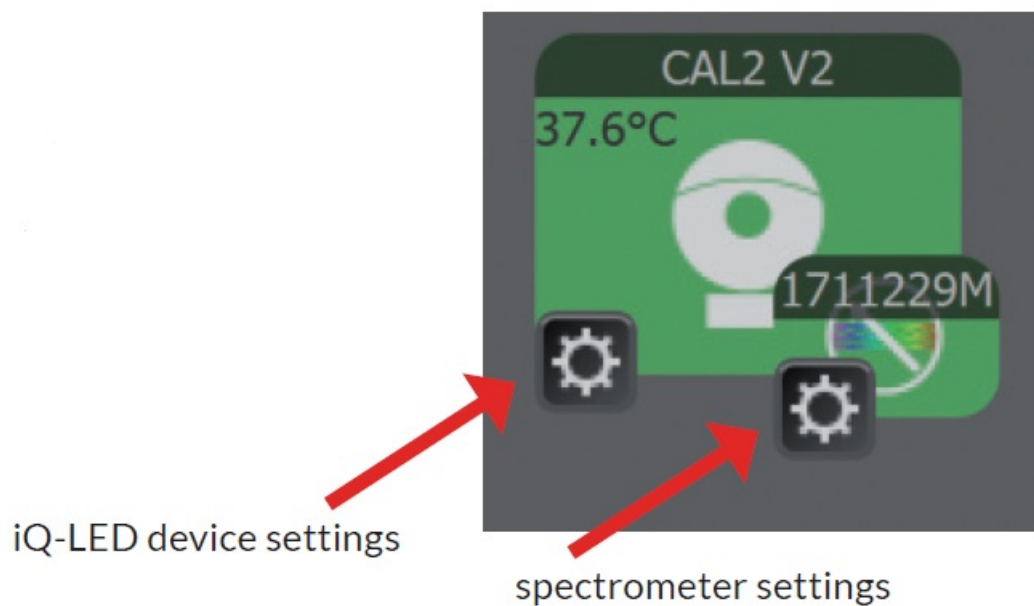


Select the gear wheels in the iQ-LED device section to open the device setting menu.



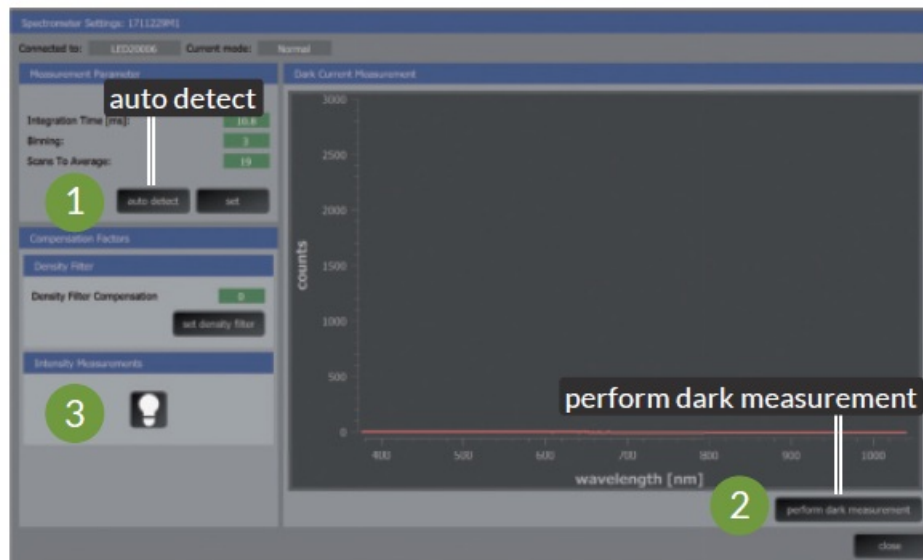
Create a new device by clicking on “+” (1) and then add the required components per drag and drop (2). Rename the device by selecting the preset name. Choose the device icon corresponding to your device (3). Click “back” to return to the main surface.

## Calibration

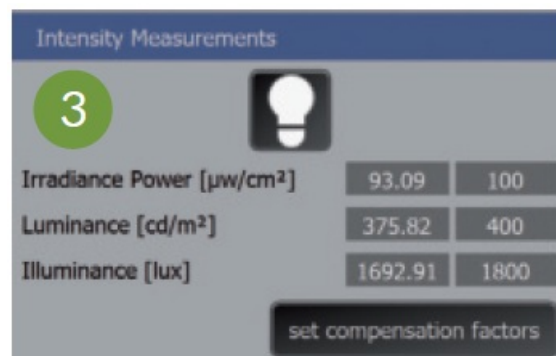


Click on the gear wheels to enter the spectrometer settings and the iQ-LED device settings menu.

### First step – spectrometer settings



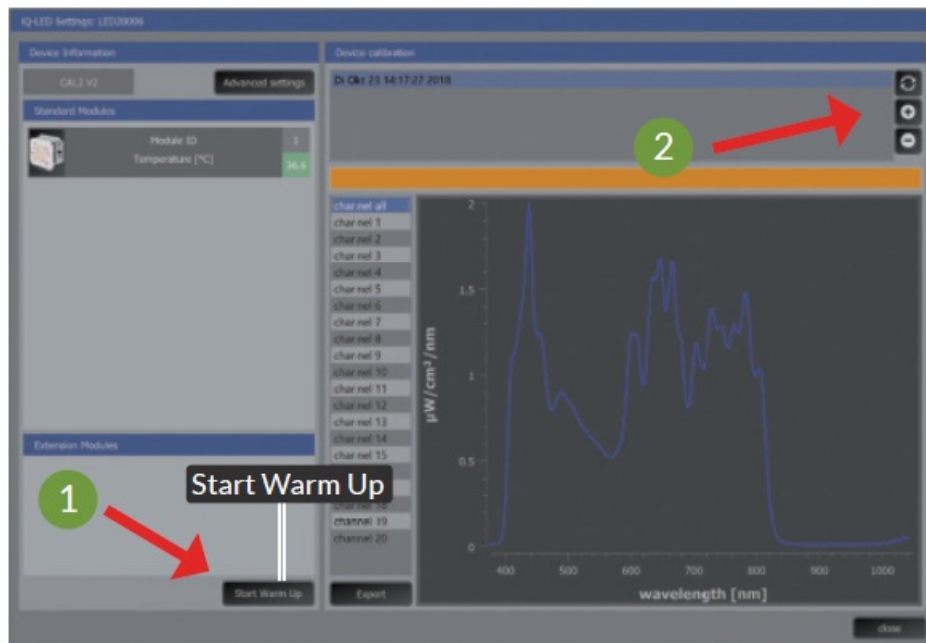
Press the auto detect button to set the spectrometer setting (1). Put your device in a dark environment and perform a dark measurement (2).



Turn on the calibration light via the bulb button and set compensation factors (3). These values are stated in the user factory calibration report of your device.

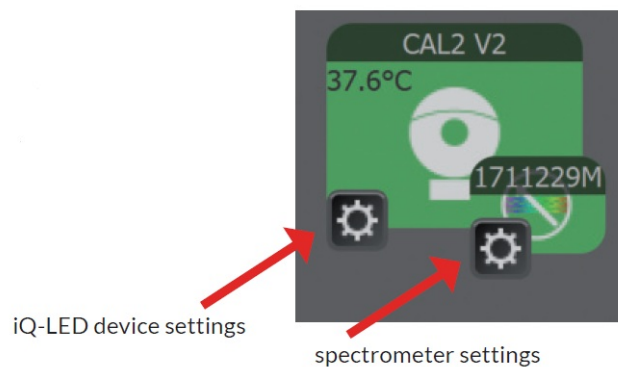
**Notice:** when setting the illuminance calibration factor for the LE7, a chart must not be installed.

## Second step – iQ-LED device settings

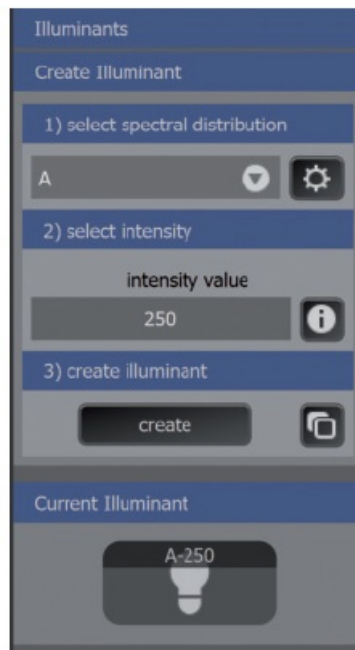


1. Start warmup if operating temperature of 38°C (for iQ-LED V2) is not reached (1).
2. Before the first use, please perform a spectral calibration. To start the calibration, press the “+” button (2). It is important that no ambient light enters the device during calibration. Please wait until the calibration process is finished before proceeding.

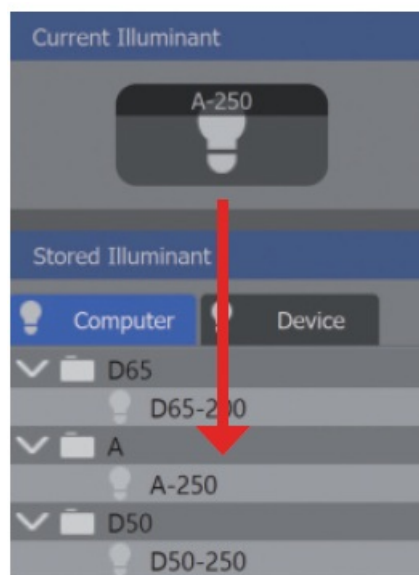
### Predefined Illuminants/Store on Device



Click on the iQ-LED device and spectrometer to activate your device and the spectral measurement. The background color of an active device will turn to green.

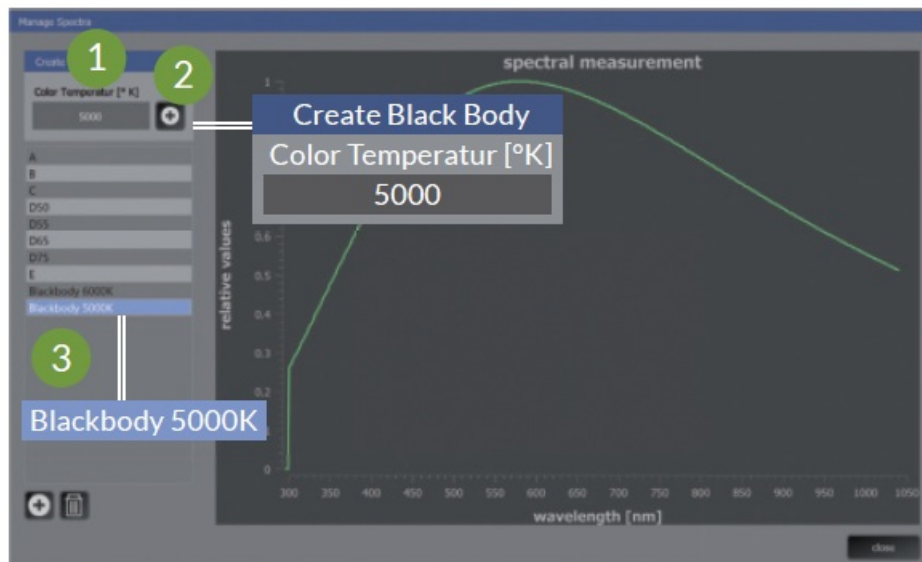


1. Select the desired illuminant via the pulldown menu.
2. The “i”-button calculates the possible maximal illuminance of the spectrum. Type in the desired intensity.
3. Click on “create” or press enter to generate the illuminant.



4. You can save your illuminant by dragging it into the “Stored Illuminants” section.
5. You can select different illuminants while pressing the Strg-button. Right-click to store them on the device.

## Creating Illuminants



Open the “Manage Spectra” section via the gear wheels button in the “Create Illuminant” section. Create a black body radiator reference by setting the required color temperature (1), add the illuminant to the list with the “+” button (2).

The “Manage Spectra” menu also gives you the possibility to manage your measurements and rename your reference spectra (3). All reference spectra of the list will be shown in the “Create Illuminant” menu in the main window and can be generated as described before. For a detailed description and usage of the whole range of functionality of the iQ-LED control software, please read the iQ-LED software user manual.

## Contact

- Image Engineering GmbH & Co. KG Im Gleisdreieck 5
- 50169 Kerpen-Germany
- T: +49 2273 99 99 1-0
- [support@image-engineering.de](mailto:support@image-engineering.de)
- [www.image-engineering.com](http://www.image-engineering.com)

## Documents / Resources

	<p><a href="#">Image Engineering iQ-LED Control Software</a> [pdf] User Guide iQ-LED Control Software, iQ-LED, Control Software, iQ-LED Software, Software</p>
--	--

## References

- [S Engineering.de Das Branchenportal für Engineering, Anbieter, Deutschland](#)
- [Image Engineering - Solutions to test image Quality](#)