



## iLuv SMARTSHAKER3 Vibration Bed Shaker Bluetooth Alarm Clock with Multiple Alarm & Vibration Settings User Manual

[Home](#) » [iLuv](#) » iLuv SMARTSHAKER3 Vibration Bed Shaker Bluetooth Alarm Clock with Multiple Alarm & Vibration Settings User Manual 

### Contents

- [1 iLuv SMARTSHAKER3 Vibration Bed Shaker Bluetooth Alarm Clock with Multiple Alarm & Vibration Settings](#)
- [2 Charging](#)
- [3 Set-Up](#)
- [4 FCC Statement:](#)
- [5 Documents / Resources](#)
- [6 Related Posts](#)

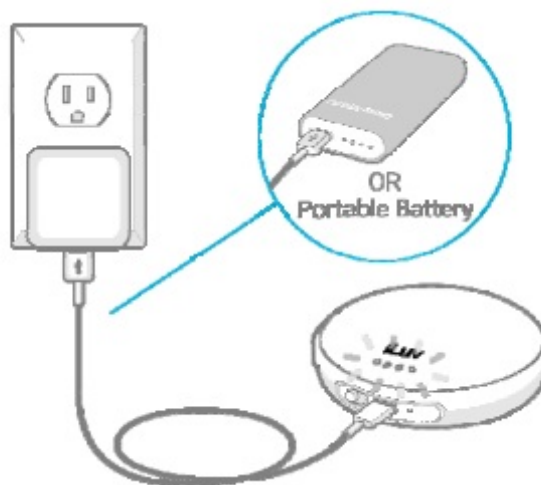
iLuv®

## iLuv SMARTSHAKER3 Vibration Bed Shaker Bluetooth Alarm Clock with Multiple Alarm & Vibration Settings



### Charging

Connect the USB cable to the SmartShaker 3 and plug the other end of the USB cable to any USB wall adapter. The LED light should blink white. After charging full (all LED off or solid on), you can detach the USB cable



### Set-Up

#### Open the Android App.

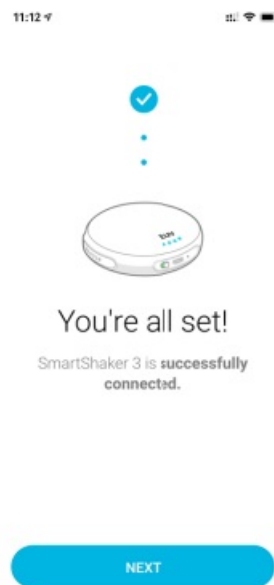
Directly click "Get Started" and then click "Next," "Next till you will see the below screens.

## Searching

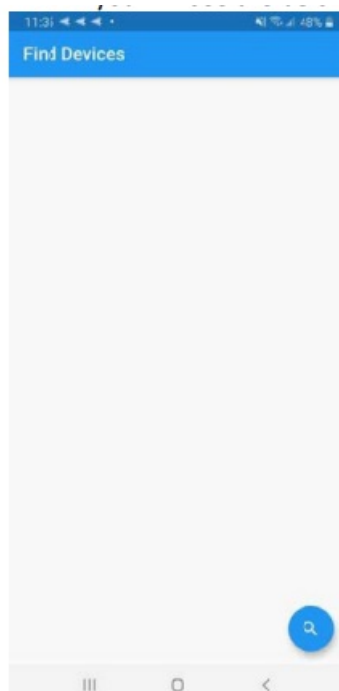
The searching process may take over 1 minute to complete. Make sure the SmartShaker 3 is close to the pairing device.



Just wait for around 10 seconds. Then, you will see the below Screen. Just click Next to go ahead.

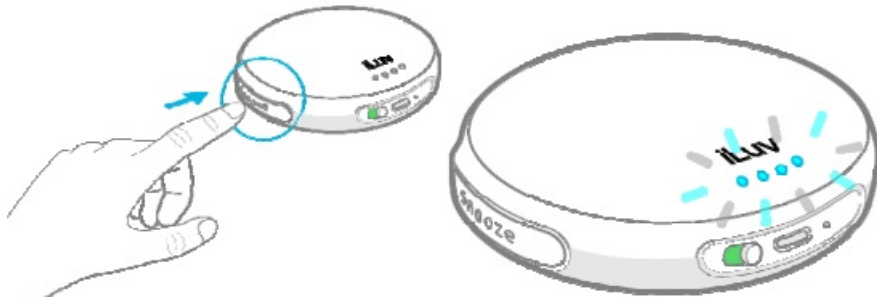


Then you will see below screen. Click the button at the right bottom corner. If there is any prompt asking you to accept location or Bluetooth access, just click okay. If the app close, open it again and you will see the below Screen again. Click the button at the right bottom corner again.

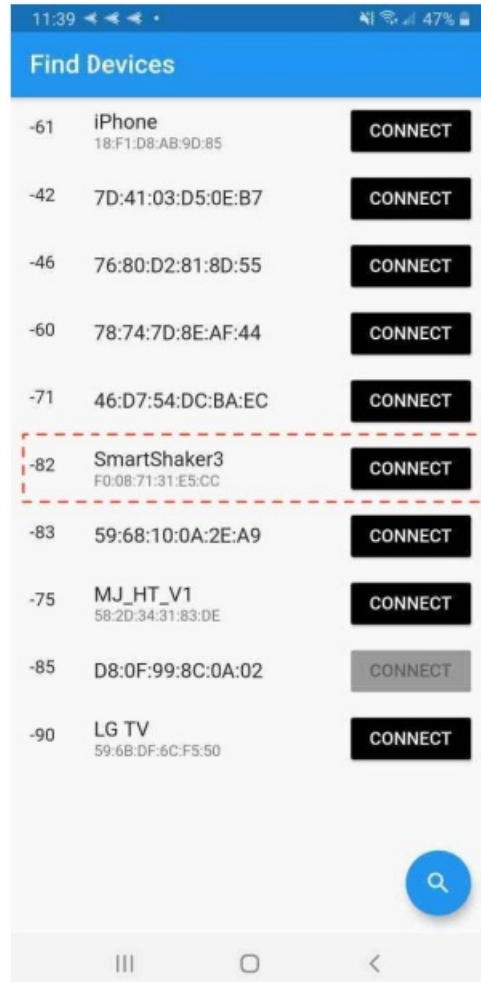


At this moment, make sure the slide switch is at on its position. Press and hold snooze button for 10s on the

device. Then you see should see LED light blink blue and then you can release the snooze button.



4. Click the button at the right bottom corner again. Then, you should see “SmartShaker 3” as below, click connect. Then, the device should vibrate once. If you have too many devices nearby, you will see multiple “SmartShaker 3”. In this case, try to take away that SmartShaker 3 device that you will not want to test.



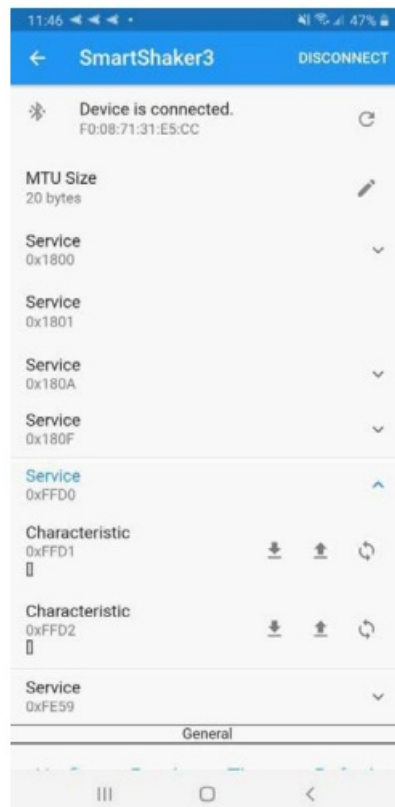
Then, you will see below Screens. Click the button in the red dotted rectangle as below.



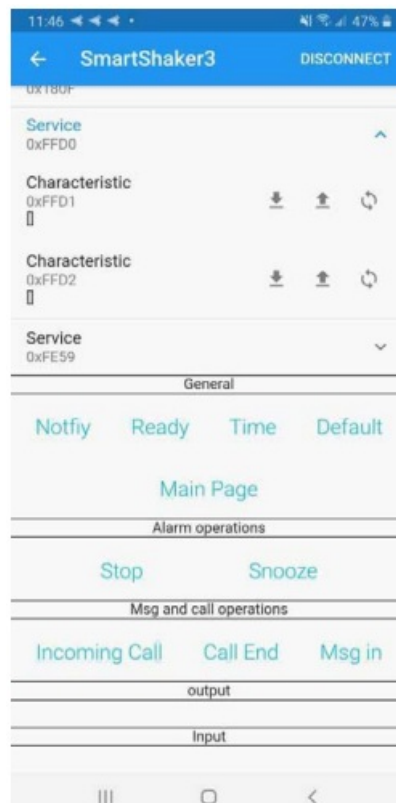
Then, you will see below screen.



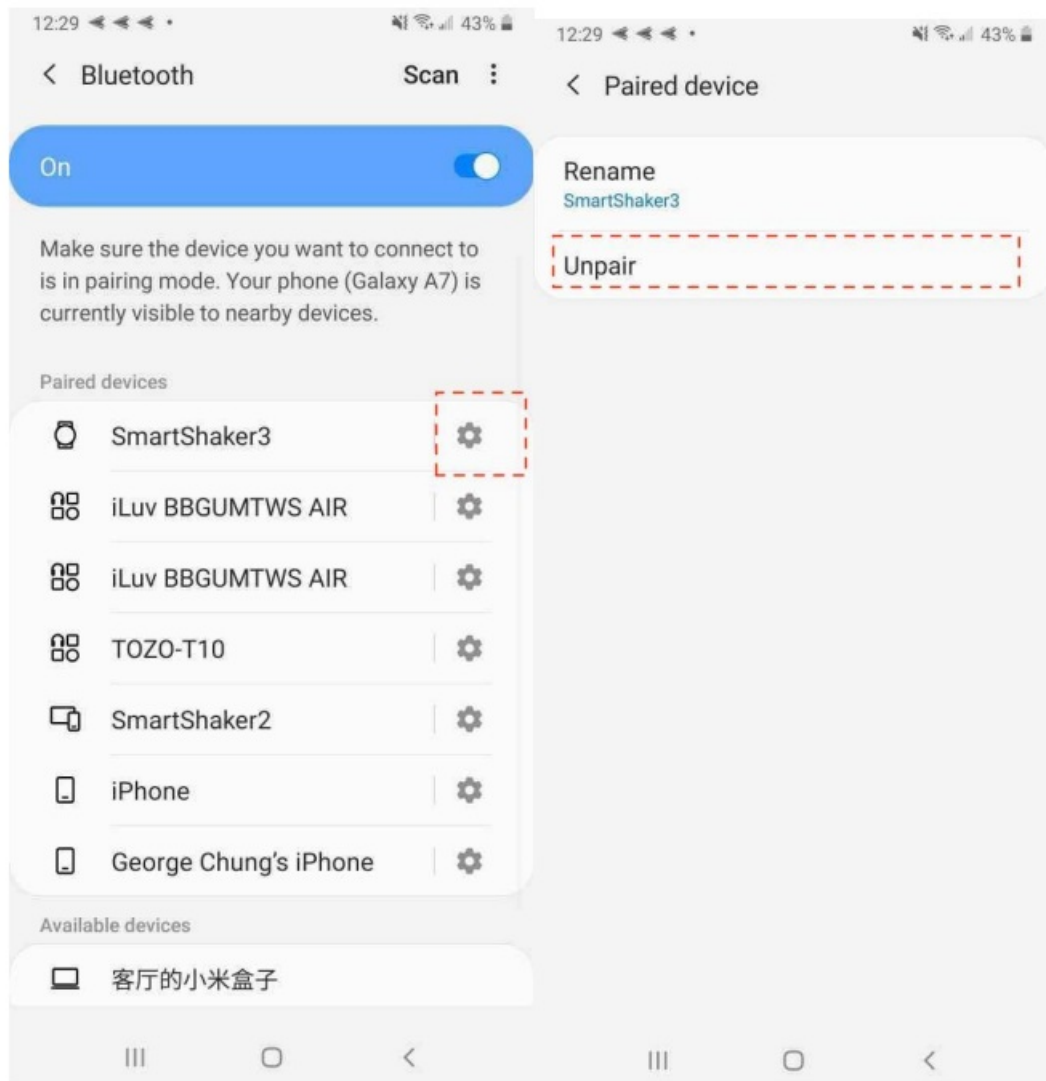
Just scroll down the screen. You will see below.



Note: if the device is disconnected during testing,click “Msg in” and “Incoming Call will not have vibration effect. please click the “Connect” button at the top right corner to connect again. Then, please repeat steps 5-10.



If you close the app and want to test it next time, just start from step 4 again. If you encounter continuous connection problem, please go to Bluetooth setting menu to remove the pairing record and start again from step 2.

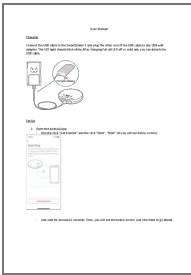


### FCC Statement:

This device complies with part 15 of the FCC Rules. Operation is subject to the following two conditions: (1) This device may not cause harmful interference, and (2) this device must accept any interference received, including interference that may cause undesired operation. This equipment has been tested and found to comply with the limits for a Class B digital device, pursuant to part 15 of the FCC Rules. These limits are designed to provide reasonable protection against harmful interference in a residential installation. This equipment generates, uses and can radiate radio frequency energy and, if not installed and used in accordance with the instructions, may cause harmful interference to radio communications. However, there is no guarantee that interference will not occur in a particular installation. If this equipment does cause harmful interference to radio or television reception, which can be determined by turning the equipment off and on, the user is encouraged to try to correct the interference by one or more of the following measures:

- Reorient or relocate the receiving antenna.
- Increase the separation between the equipment and receiver.
- Connect the equipment into an outlet on a circuit different from that to which the receiver is connected.

### Documents / Resources



**[iLuv SMARTSHAKER3 Vibration Bed Shaker Bluetooth Alarm Clock with Multiple Alarm & Vibration Settings](#)** [pdf] User Manual

SMARTSHAKER3, ATL-SMARTSHAKER3, ATLSMARTSHAKER3, SMARTSHAKER3 Vibration Bed Shaker Bluetooth Alarm Clock with Multiple Alarm Vibration Settings, Vibration Bed Shaker Bluetooth Alarm Clock with Multiple Alarm Vibration Settings