

ILLUXTRON Sensor Downlight Sensor Vector 100 Owner's Manual

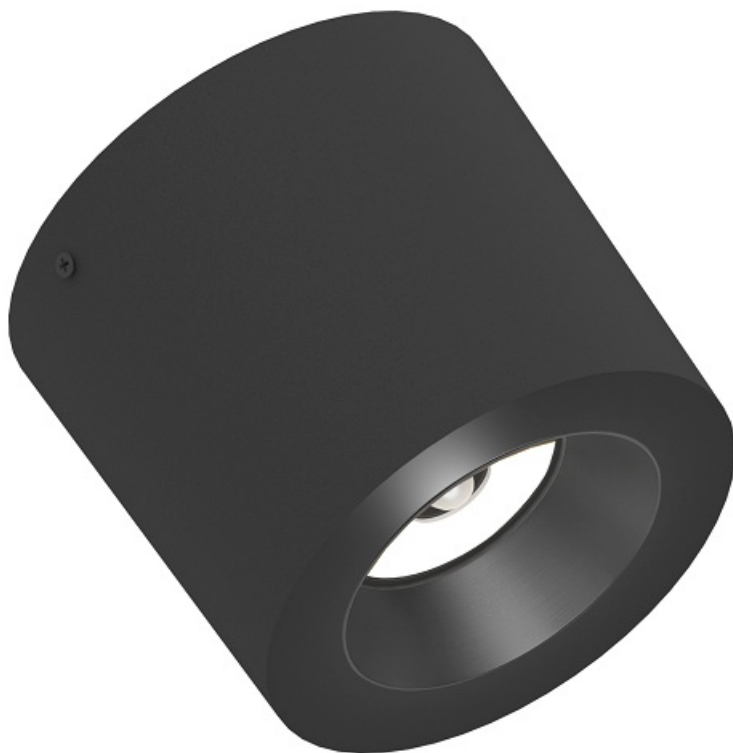
[Home](#) » [ILLUXTRON](#) » ILLUXTRON Sensor Downlight Sensor Vector 100 Owner's Manual 

Contents

- 1 ILLUXTRON Sensor Downlight Sensor Vector 100
- 2 SYMBOL EXPLANATION
 - 2.1 ENERGY CLASS
- 3 DETECTION AREA
 - 3.1 FIXATION DIMENSIONS INSTALLATION
 - 3.2 DIMENSIONS
- 4 Documents / Resources
 - 4.1 References
- 5 Related Posts



ILLUXTRON Sensor Downlight Sensor Vector 100



SYMBOL EXPLANATION

CE The lighting fitting – as well as all other products from the collection – is designed, produced



If in doubt, consult a qualified electrician or contact your retail outlet.
Ensure that you always install the fitting to the relevant regulations



Protection class I: the fitting has an earthing connection. The earth wire (yellow/green) has to be connected to the clip marked with .



Protection class II: the fitting is double insulated and must not be connected to an Earth.

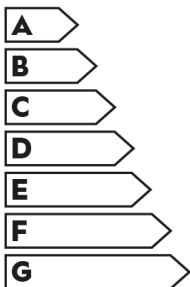


Protection class III: the fitting is only suitable for very low voltage supply.



This fitting should only be installed indoors.

ENERGY CLASS



These products contains a light source of energy efficiency class:
F (3000K) / E (4000K)

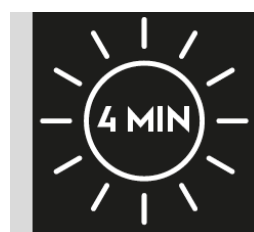
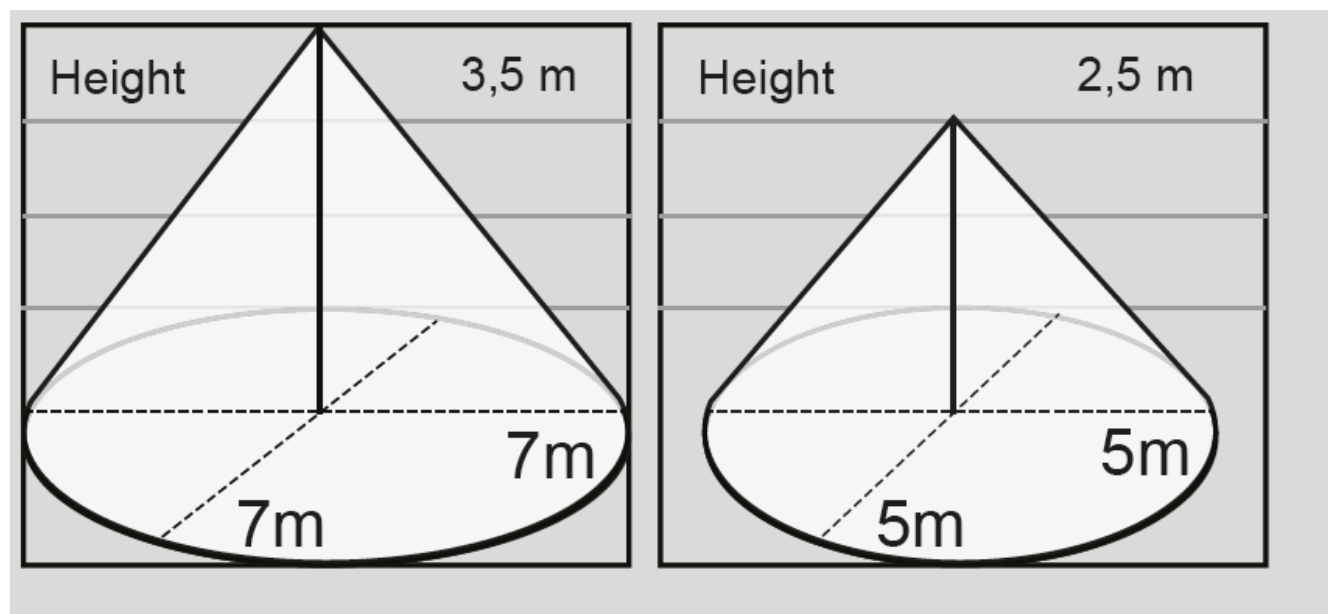


Disposal of your old product: Your product is designed and manufactured with high quality materials and components, which can be recycled and reused. When this crossed-out wheeled bin symbol is attached to a product it means the product is covered by the European Directive 2002/96/EC. Please inform yourself about the local separate collection system for electrical and electronic products.



The fitting may be covered with insulating material.

DETECTION AREA

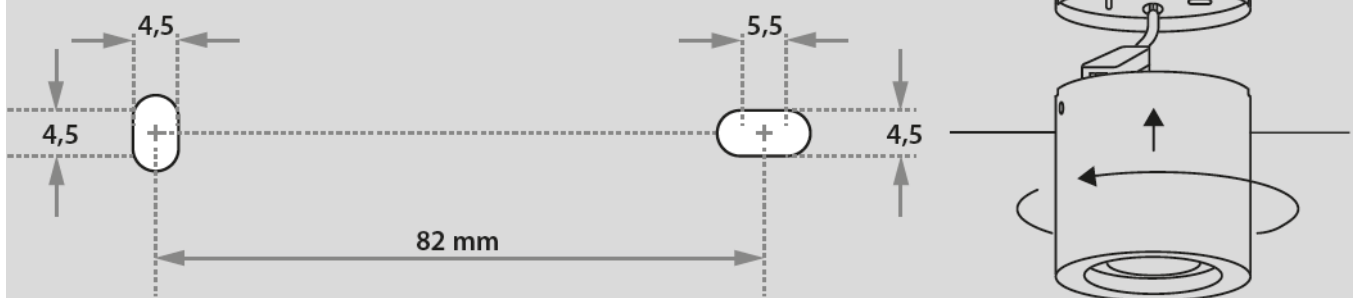


Sensor luminaires turn on for 4 minutes after detecting movement.

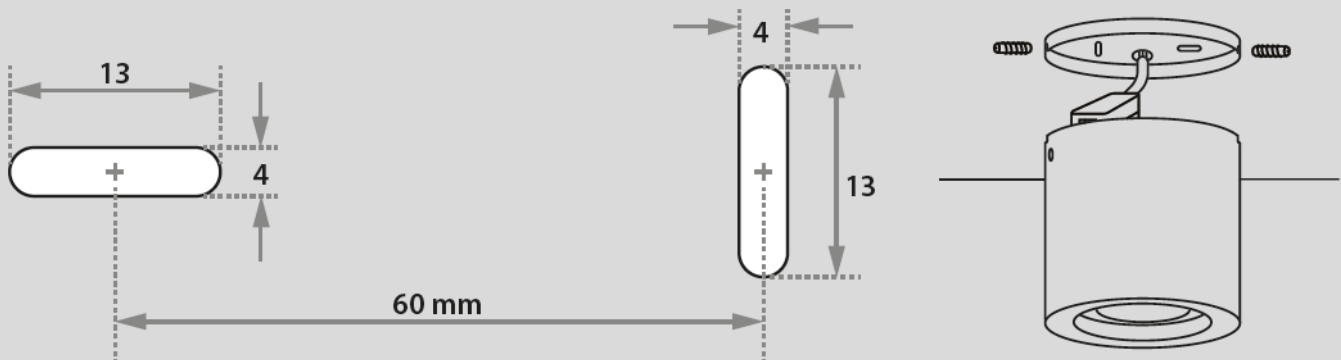
FIXATION DIMENSIONS

INSTALLATION

SensorFido CL 105 HV

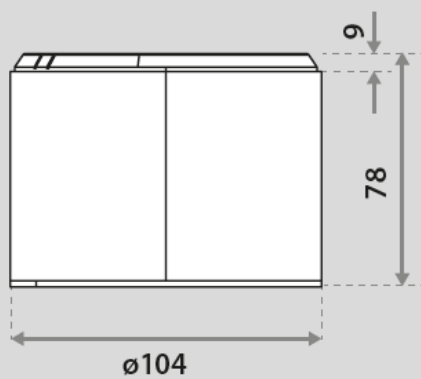


SensorVector CL 100 HV

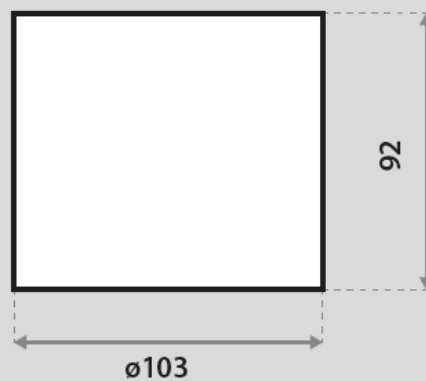


DIMENSIONS

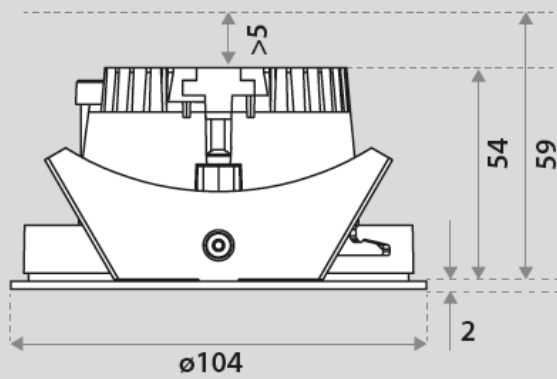
SensorFido CL 105 HV (IP20)



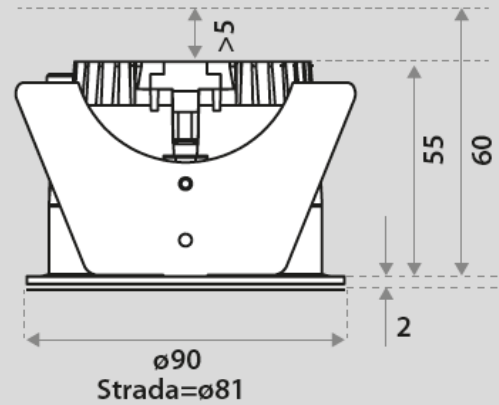
SensorVector CL 100 HV (IP20)



SensorFido 98 HV (IP20)



Sensor 75 HV (IP20)



Hole size / Springs



CS (concrete) and WS (wire) springs



CS (concrete) springs



WS (wire) springs

Mercuriusweg 19

4382 NC Vlissingen

The Netherlands

info@illuxtron.com

+31 (0)85 773 63 60

www.illuxtron.com

Documents / Resources



[ILLUXTRON Sensor Downlight Sensor Vector 100](#) [pdf] Owner's Manual
Sensor Downlight Sensor Vector 100, Downlight Sensor Vector 100, Sensor Vector 100, Vector 100, 100

References

- [Home](#)