



iLIVE INB613 v3150-01 TechPage+ Smart Notebook User Guide

[Home](#) » [iLive](#) » iLIVE INB613 v3150-01 TechPage+ Smart Notebook User Guide 

iLIVE INB613 v3150-01 TechPage+ Smart
Notebook User Guide

TechPage+ Smart Notebook

User's Guide for Model INB613 v3150-01



Contents

- 1 Overview
 - 1.1 Features
 - 1.2 Includes
- 2 Orientation
- 3 Charging the Battery
- 4 Download the TechPage+ App
- 5 Register Your Account
- 6 Connect the Pen to the TechPage+ App
- 7 Create a New Note
- 8 Note Menu
- 9 Profile Tab
- 10 Offline Data
- 11 Pen Refills
- 12 Important Safety Instructions
- 13 Documents / Resources
 - 13.1 References

Overview

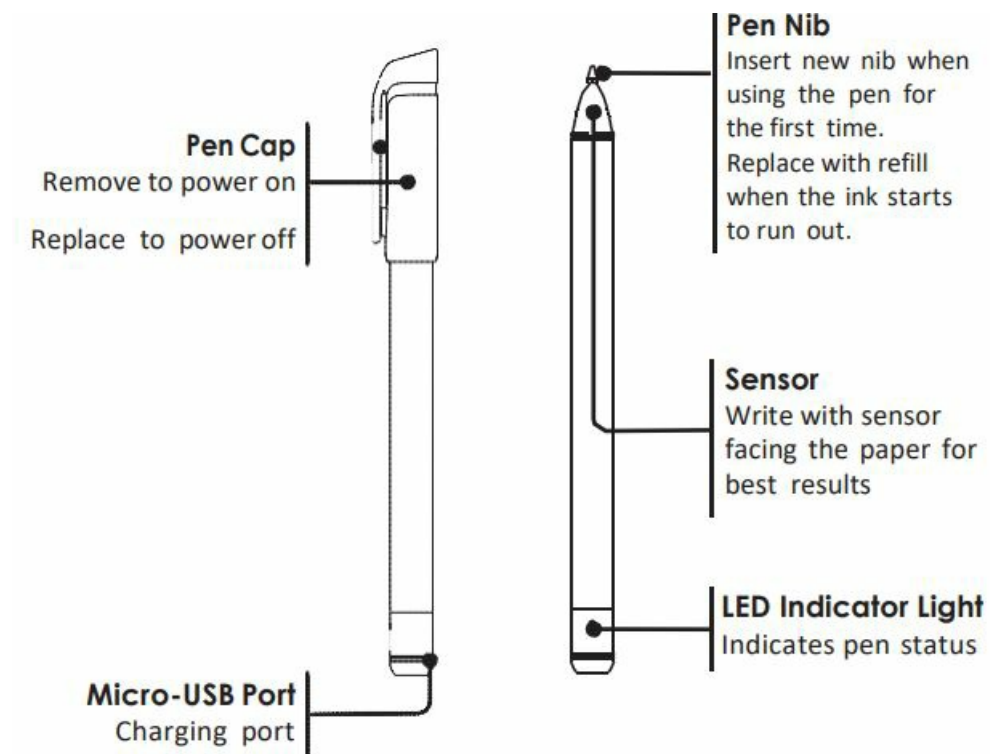
Features

- Bluetooth transmitter in pen
- App for storing notes and drawings
- Video recording of writing process with audio on app
- Built-in rechargeable battery
- Battery life: approx. 8 hours of continuous use

Includes

- User Manual
- Micro-USB charging cable
- 10 pen refills
- Refill replacement tool
- A5 notebook with T-matrix paper, 128 pages

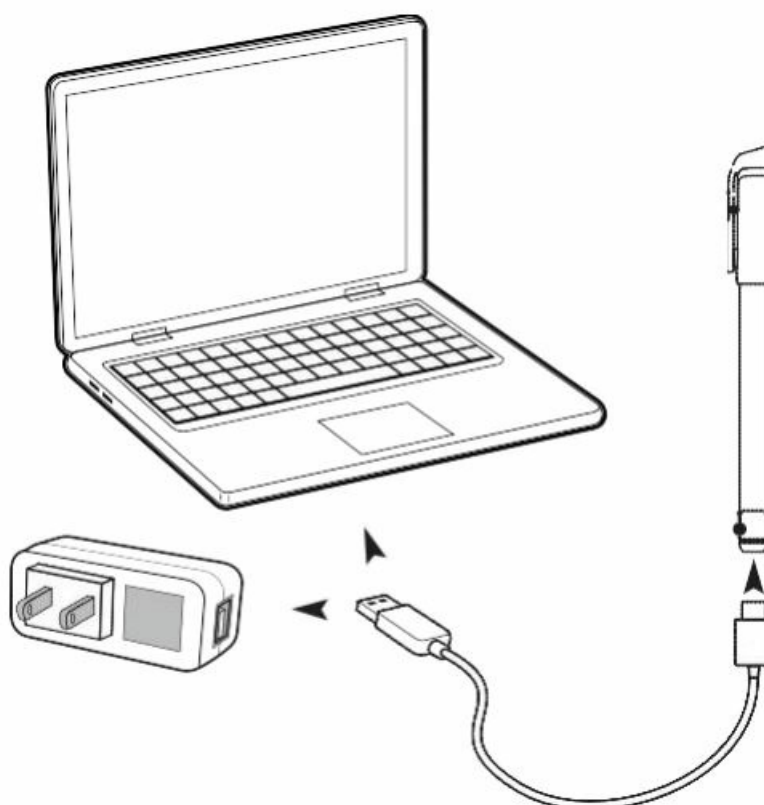
Orientation



LED Indicator Light Meaning	
Steady White	Power On
Flashing White	Bluetooth connected
Steady Red	Low battery
Flashing Red	Charging
Steady Green	Fully charged
Flashing Purple	Synchronizing offline data
Flashing Yellow	Insufficient storage space
Flashing Multi-Color	Software update in progress

Charging the Battery

To charge the internal battery, connect the Micro-USB charging cable to the Micro-USB port on the pen and a powered-on computer or USB power adapter (not included). Charge time is approximately 1.5 hours.



Download the TechPage+ App

Download the TechPage+ App from the [Apple App Store](#) (or [Google Play Store](#))



Register Your Account

When opening the app for the first time, you will need to sign in using an existing account (AppleID, Google Account, Facebook Login, WeChat Login) or your phone number.

1. If using an existing account, allow the TechPage+ App permissions to access website data.
2. If using your phone number, enter your full phone number including country code. Then, enter the verification code within 60 seconds to login and agree to the app Terms and Conditions.

Connect the Pen to the TechPage+ App

Make sure the Bluetooth setting on your device is turned on. When powering on for the first time, the TechPage+ App will prompt you to connect your Smartpen.

1. Power on the pen by removing the pen cap or applying pressure to the pen refill. You will hear a chime when the pen powers on and the LED Indicator light will turn on.
2. Open the app. It will automatically enter pairing mode and search for a signal.
3. A screen will appear with a MAC number. Confirm that the MAC number on the screen matches the one on the side of the pen and tap connect.
4. After establishing a connection, you can sync and save your notes and drawings on the app.

Note: The App will automatically connect to the last paired pen after closing and reopening. If you wish to connect a different pen, tap the to enter pairing mode. A voice prompt will announce “Bluetooth is connecting” start from step two to connect to your device.

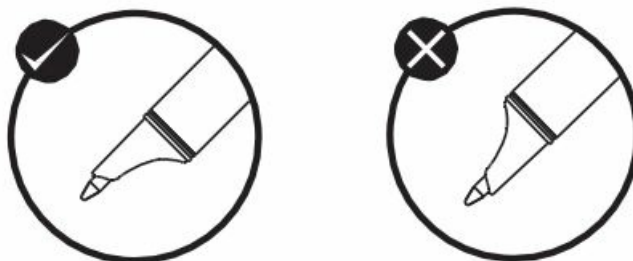
Create a New Note

1. Tap the plus sign on the bottom left corner of the main page to open a new note.
2. Name the note in the dialog box at the top of the screen. The automatic naming format is “MM/DD Time Note.”
3. Write in the T-matrix paper notebook while the app syncs your handwriting.

Tips for Use

- Change pen color in the app notes by tapping the pen icon on the bottom menu and select a new color.
- Tap the marker and eraser icons on the bottom menu to.
- Change the paper appearance by tapping the paper icon.

- When writing notes, the app recognizes which notebook page you are using. You can continue to the next page by tapping the upper right corner of that page. You can continue writing your note on the back side of a page by tapping the upper left corner of that page.
- When writing, hold the pen without blocking the pen sensor, as seen in the image below. Blocking the sensor may affect writing synchronization with the app.



Note Menu

Access the Note Menu by tapping the three dots menu in the upper left corner of the Note Writing screen.

- Playback: Replays the synched handwriting/drawing in the note with three playback speeds (1x, 2x, or 4x).
- Recording: Plays recordings of note taking with audio.
- Share: Send the note to a friend or colleague via app or email or save the note as a photo or PDF to your phone.
- Delete: Delete the note data from the app.

Profile Tab

Access the Profile Tab by tapping the Profile icon on the lower right side of the main screen.

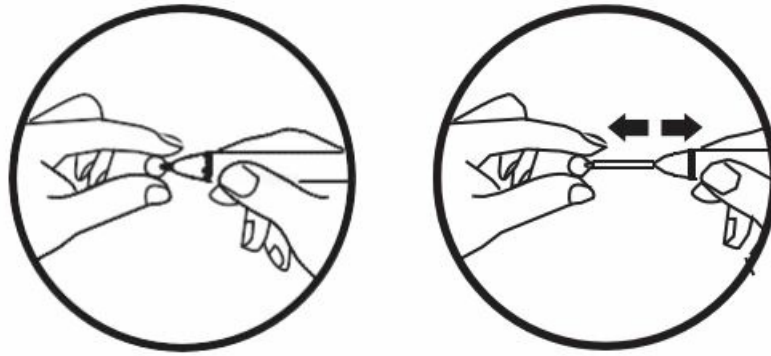
- My Tags: Manage your stored tags for note organization. You may store up to 10 tags. Tags cannot be more than six words.
- Help: Review a help guide for basic app and pen functions.
- Video Tutorial : Video walkthroughs of how to use certain app functions.
- Feedback: Leave comments about app functionality.
- Settings: Change your username or language, view the User Agreement, or sign out of the app.

Offline Data

If you use the notebook and pen without connecting to the app, the pen will store your writing data. The pen will upload the offline data to the app automatically after connecting to the app.

Pen Refills

When the pen nib runs out of ink, replace it with one of the 10 refills. Use the refill replacement tool to grab onto the end of the pen nib currently in the pen. Gently pull the nib out. Then, grab the end of the refill with the tool and insert it into the pen.



Important Safety Instructions

- Read these Instructions.
- Keep these Instructions.
- Heed all Warnings.
- Follow all instructions.
- Do not use this apparatus near water.
- Clean only with a dry cloth.
- Do not block any ventilation openings. Install in accordance with the manufacturer's instructions.
- Do not install near any heat sources such as radiators, heat registers, stoves, or other apparatus (including amplifiers) that produce heat.
- Do not defeat the safety purpose of the polarized or grounding – type plug. A polarized plug has two blades with one wider than the other. A grounding type plug has two blades and a third grounding prong. The wide blade or the third prong are provided for your safety. When the provided plug does not fit into your outlet, consult an electrician for replacement of the obsolete outlet.
- Protect the power cord from being walked on or pinched particularly at plugs, convenience receptacles, and the point where they exit from the apparatus.
- Only use attachments/accessories specified by the manufacturer.
- Unplug this apparatus during lightning storms or when unused for long periods of time.
- Refer all servicing to qualified service personnel. Servicing is required when the apparatus has been damaged in any way, such as power-supply cord or plug is damaged, liquid has been spilled or objects have fallen into the apparatus, the apparatus has been exposed to rain or moisture, does not operate normally, or has been dropped.
- Use only with a cart, stand, tripod, bracket, or table specified by the manufacturer, or sold with the apparatus. When a cart is used, use caution when moving the cart/apparatus combination to avoid injury from tip-over.

FCC Warnings

This device complies with part 15 of the FCC Rules. Operation is subject to the following two conditions: (1) This device may not cause harmful interference, and (2) this device must accept any interference received, including interference that may cause undesired operation. Any changes or modifications not expressly approved by the party responsible for compliance could void the user's authority to operate the equipment. NOTE: This equipment has been tested and found to comply with the limits for a Class B digital device, pursuant to Part 15 of the FCC Rules. These limits are designed to provide reasonable protection against harmful interference in a residential installation. This equipment generates, uses and can radiate radio frequency energy and, if not installed and used in accordance with the instructions, may cause harmful interference to radio communications. However, there is no guarantee that interference will not occur in a particular installation. If this equipment does cause harmful interference to radio or television reception, which can be determined by turning the equipment off and on, the user is encouraged to try to correct the interference by one or more of the following measures:

- Reorient or relocate the receiving antenna.
- Increase the separation between the equipment and receiver.
- Connect the equipment into an outlet on a circuit different from that to which the receiver is connected.
- Consult the dealer or an experienced radio/TV technician for help. The device has been evaluated to meet general RF exposure requirement. The device can be used in portable exposure condition without restriction

Additional Warnings and Precautions

- CAUTION: TO PREVENT ELECTRIC SHOCK, MATCH WIDE BLADE OF PLUG TO WIDE SLOT, FULLY INSERT.
- Mains plug is used as disconnect device and it should remain readily operable during intended use. In order to disconnect the apparatus from the mains completely, the mains plug should be disconnected from the mains socket outlet completely.
- WARNING: Shock hazard – Do Not Open.
- CAUTION: Use of controls or adjustments or performance of procedures other than those specified may result in hazardous radiation exposure.
- WARNING: Changes or modifications to this unit not expressly approved by the party responsible for compliance could void the user's authority to operate the equipment.
- WARNING: Do not place this unit directly onto furniture surfaces with any type of soft, porous, or sensitive finish. As with any rubber compound made with oils, the feet could cause marks or staining where the feet reside. We recommend using a protective barrier such as a cloth or a piece of glass between the unit and the surface to reduce the risk of damage and/or staining.
- WARNING: Do not ingest battery, chemical burn hazard.
- Battery shall not be exposed to excessive heat such as sunshine, fire or the like.
- Lithium batteries, like all rechargeable batteries, are recyclable and should be recycled or disposed of according to state and local guidelines. They should never be disposed of in normal household waste and they should never be incinerated, as they might explode. Contact your local government for disposal or recycling practices in your area.

Customer Support



Customer Service: 1-888-999-4215 | Email Support: prodinfo@dpiinc.com | Email Parts: partsinfo@dpiinc.com

For Warranty Information and the most up-to-date version of this User's Guide, go to www.iLiveElectronics.com. To download this User's Guide in English, Spanish, or French, or to get answers to frequently asked questions, visit the support section at: www.iLiveElectronics.com



WARNING: To reduce the risk of electric shock, do not remove cover (or back). No user-serviceable parts inside. Refer servicing to qualified service personnel.



The exclamation point within an equilateral triangle is intended to alert the user to the presence of important operating and maintenance (servicing) instructions in the literature accompanying the appliance.



The lightning flash with arrowhead symbol, within an equilateral triangle, is intended to alert the user to the presence of un-insulated “dangerous voltage” within the product’s enclosure that may be of sufficient magnitude to constitute a risk of electric shock to persons.



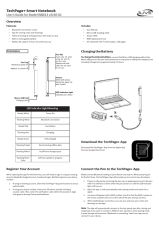
This symbol indicates that this product incorporates double insulation between hazardous mains voltage and user accessible parts.



WARNING: This product can expose you to chemicals including lead, which is known to the State of California to cause cancer. For more information go to: www.P65Warnings.ca.gov This product meets and complies with required Federal product guidelines.

P65Warnings.ca.gov

Documents / Resources

	<p>iLIVE INB613 v3150-01 TechPage+ Smart Notebook [pdf] User Guide INB613B, 2AXCZ-INB613B, 2AXCZINB613B, INB613 v3150-01 TechPage Smart Notebook, TechPage Smart Notebook, Smart Notebook, Notebook</p>
---	---

References

- P65Warnings.ca.gov
- [iLive | Mobile Accessories, Digital Sound Systems, Electronics](#)
- [User Manual](#)