



iKF T2 Headset with Microphone User Manual

[Home](#) » [iKF](#) » iKF T2 Headset with Microphone User Manual 

iKF T2 Headset with Microphone User Manual



Welcome

Thank you for using the iKF-T2. We hope you will enjoy it!

Official package including Headphone*1
Charging cable*1
AUX audio cable*1
External microphone*1
User manual*1



Contents

- 1 [Before use](#)
- 2 [Overview](#)
 - 2.1 [Specifications](#)
 - 2.2 [Charging Your Headset](#)
 - 2.3 [Instruction](#)
 - 2.4 [Headphone Status](#)
 - 2.5 [How to use](#)
 - 2.6 [Wired connection](#)
 - 2.7 [External microphone](#)
 - 2.8 [TIPS](#)
 - 2.9 [Limited warranty](#)
- 3 [Documents / Resources](#)
 - 3.1 [References](#)
- 4 [Related Posts](#)

Before use

Important Safety Instructions

1. Read these instructions.
2. Keep these instructions.
3. Heed all warnings.

4. Follow all instructions.
5. Do not use this apparatus near water.
6. Clean only with a dry cloth.
7. Only use attachments/accessories specified by the manufacturer.
8. required when the apparatus has been damaged in anyway, such as power supply cord or plug is damaged, liquid has been spilled or objects have fallen into the apparatus, the apparatus has been exposed to rain or moisture, does not operate normally, or has been dropped.

WARNINGS/CAUTIONS

- Do NOT use the headphones at a high volume for any extended period. – To avoid hearing damage, use your headphones at a comfortable, moderate volume level.
- Turn the volume down on your device before placing the headphones on your ears, then turn the volume up gradually until you reach a comfortable listening level.
 - Do NOT use your headphones while driving for phone calls or any other purpose.
 - Do NOT use the headphones with noise canceling on at any time the inability to hear surrounding sounds may present a danger to yourself or others, e.g., while riding a bicycle or walking in or near traffic, a construction site or railroad, etc., and follow applicable laws regarding headphone use,
- Remove the headphones, or use the headphones with noise cancelling off and adjust your volume, to ensure you can hear surrounding sounds, including alarms and warning signals,
- Be aware of how sounds that you rely on as reminders or warnings may vary in character when using the headphones.
- **Do NOT** use the headphones if they emit any loud unusual noise, If this happens, turn the headphones off and contact iKF customer service. Remove headphones immediately if you experience a warming sensation or loss of audio.
- **Do NOT** use mobile phone adapters to connect headphones to airplane seat jacks, as this could result in injury or property damage due to overheating,
- Do NOT use the headphones as aviation communication headsets.

Contains small parts which may be a choking hazard, Not suitable for children under age 3,
This product contains magnetic material, Consult your physician on whether this might affect your implantable medical device.
- To reduce the risk of fire or electrical shock, do NOT expose this product to rain, liquids or moisture,
- Do NOT expose this product to dripping or splashing, and do not place objects filled with liquids, such as vases, on or near the product,
- NOT make unauthorized alterations to this product.
- Use this product only with an agency-approved power supply that meets local regulatory requirements (e.g., UL, CSA, VDE, CCC),
- If the battery leaks, do not allow the liquid to come in contact with the skin or eyes. If contact is made, seek medical advice,
- Do not expose products containing batteries to excessive heat (e.g. from storage in direct sunlight, fire or the like).
- Do NOT wear the headphones while charging,
- The headphones do not play audio while charging

Getting assistance.

For assistance with this product, please contact our customer service at the website where you purchased the product, leave a message or email us, we will answer as soon as possible,

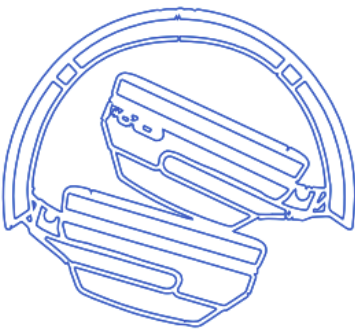
Company: Shenzhen Oumu Technology Co., Ltd,

Address: Room 315-818, Building D, Narvin Industry Interactional Nanchang District, Dongguan City, Guangdong Province, China Website: <http://www.kf.net.cn> Email: supportkd@163.com

Overview



Foldable



Specifications

Model: KF-T2

Bluetooth version: 5.3 Power input: DC 5V

Input parameters: 200mA Charging interface: TYPE-C USB

Playtime: about 50 hours

Battery capacity: 400mAh Charging time: about 2 hours

Supporting agreement: HSP/HFP/A2DP/AVRCP

Charging Your Headset

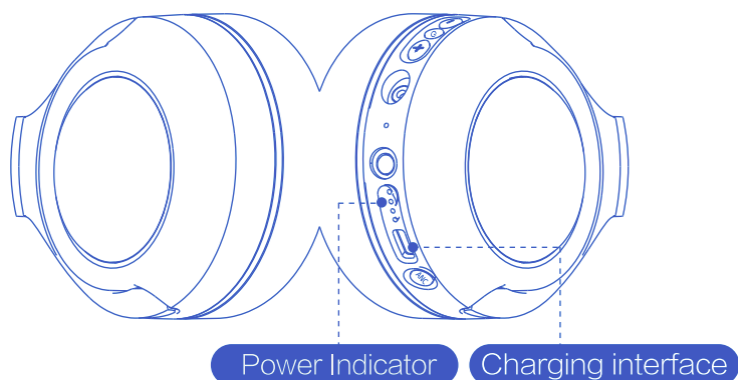
For the first time use, please fully charge the product.

Charging: White lights are always on

Full power: White lights off

Charging time: 2 hours

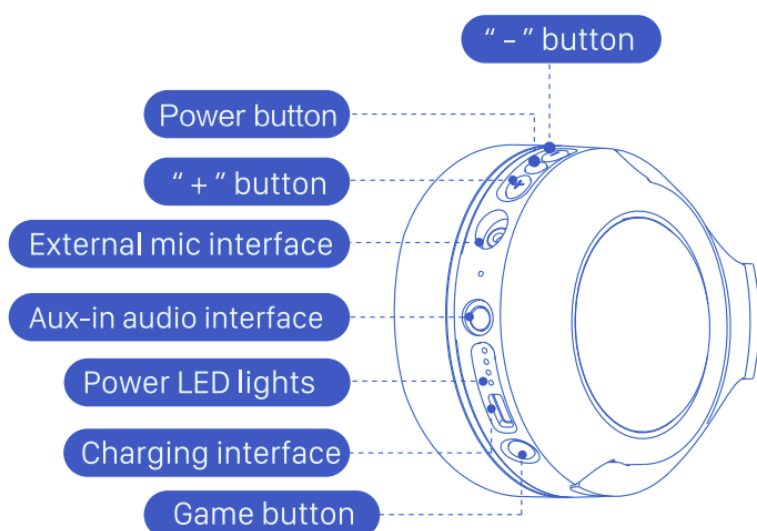
Low battery alarm: When the battery is low, it will prompt "Battery Low once, the red LED indicator will light up once every 10 seconds, and then prompt "Battery Low once every 5 minutes.



Warnings

When charging the headset, to avoid damage to the battery, it is recommended to use a 5V/2A charging head to charge, The power of the charging head should not exceed 24W. Avoid using car charger/fast charging power bank or charging head with unknown power for charging, there may be situations where charging cannot be performed or the power consumption is too fast and the signal is poor.

Instruction



Headphone Status

LED indicator

Turn on: White and green lights flash alternately Turn off: White lights stay on for 2 seconds Connection succeeded: lights are not on Charging: the white lights are always on

Fully charged: white lights off Low power state: The red light is on every 10 seconds Incoming call status: Green light is on every 10 seconds

How to Check the Battery Status of Headphones

After power on, click the game button, the battery status Indicator will light up for 2 seconds

4 lights on: 75%-100%

3 lights on: 50%-74%

2 lights on: 25%-49%

1 light on: <24%

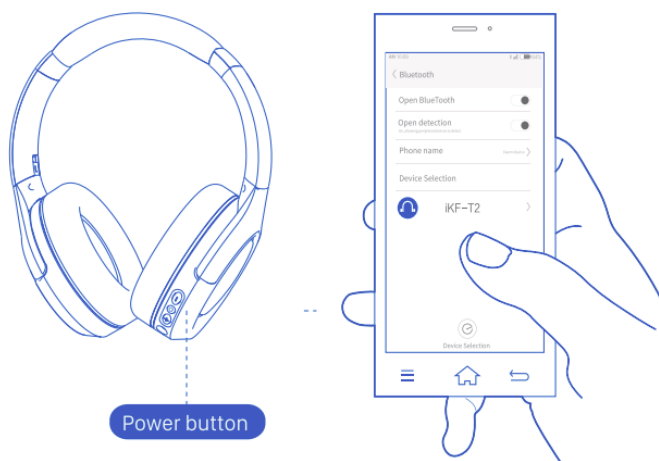
Please charge the headset in time when the red light appears

Turn on and Turn off

Turn on: Long press the power button 2 seconds and hear the English prompt “Power on” that it is turned on: Turn off: Long press the power button 3 seconds and hear the English prompt “Power off” that it is turned off;

How to use

1. Long press the power button 2S and hear the English prompt “Power on that it is turned on;
2. Open the Bluetooth interface of the mobile phone, search for “IKF-T2”, click to connect;
3. After the first pairing and connection is successful, the headset will automatically connect to the last mobile phone with a connection record every time it is turned on, and there is no need to repeat pairing.



Call with headset

Double-click the power button	Answer
4 Press the power button	Hand up
Long press the power button 2S	Incoming telegram: Reject

Listen to music with headset

Click the power button	Play/Pause
Click the button	Volume up
Click the button	Volume down
Long press the button 2S	Next song
Long press the button 2S	Previous song
3 Press the power button	Wake up voice assistant

Turn on /Turn off game mode

Double click the Game button and hear 3 beeps indicating, which means that the game mode is turned on, Double click the Game button and hear 1 beeps indicating, which means that the game mode is turned off,

Reset

In the off state, press and hold the power button for 5 seconds, the headset is forced to enter the standby state, and the Indicator light flashes alternately in white and green

Wired connection

Use the audio cable to connect a non-wireless device or if the headphone battery is depleted.

1. Insert the cable into the 3.5 mm jack on the right earcup,
2. Insert the other end of the cable into the 3.5 mm jack on your device.

“Bluetooth cannot be turned on under wired connection



External microphone

Insert the configured microphone into the microphone jack. Calls/voices are clearer, There may be third-party software incompatibility problems during the use of the external Microphone, resulting in the inability to receive audio, and the actual experience may be slightly different.

TIPS

1. Make sure the headset and the connected device are within a valid connection range and there are not too many obstacles that interfere with the signal;
2. It is normal for the headset to be disconnected occasionally, Just like WiFi, occasionally the connection is unstable. It may be due to interference in signal transmission, Please wait a moment or change the location to resolve;
3. When the headset cannot be connected to the device, please check whether the headset has power or is connected to other devices;
4. Please fully charge the Headphone once a month, If the Headphone is not used for a long time, the battery of the Headphones may be damaged,
5. The sound insulation and sound leakage of earphones are related to the way of wearing the earphones and the volume of the earphones, You can adjust the wearing angle and degree of ear wrapping of the earphones in time according to the actual comfort of use, Please close the ear/head foam part of the earphones as much as possible.
6. Please use a standard-compliant charging head to charge the headset..
7. Do not wear the product for bathing, or use it in the rain, and do not soak the product in water, After each normal use, it is recommended to dry the sweat or stains on the headphone with a dry cloth, paper towel, etc.,

and then store it,

Limited warranty

Warranty period: 1 year from the date of product receipt

During the warranty period of the product, due to the quality of the product itself, please contact us with the warranty card and shopping records to receive a return authorization /free maintenance and shipping instructions,

Fault Table

1. Bluetooth headset cannot hear sound;
2. The other side cannot hear the voice during the call;
3. Unable to charge Bluetooth headset

The following conditions will not provide free repair

1. Unauthorized maintenance, misuse, collision, neglect, abuse, accident, alteration, or damage or alteration of the appearance of the product;
2. The product exceeds the warranty period specified by the company;
3. Damage caused by self-disassembly,
4. Failures caused by accidents such as water ingress or falling, squeezing, etc,
5. Normal wear and dirt caused by use, such as scratches, damage caused by contact with chemical reagents, contact with sharp objects, etc,
6. Outer packaging and accessories, gifts, services other than the products promised by the sales staff, and additional configurations and gifts;
7. Improper storage: If the product is exposed to abnormal humidity and temperature for a long time, the performance is damaged;
8. Failure or damage caused by force majeure;

Focus on interesting musical products

We apologize for any inconvenience caused by any typographical or translation errors. If the content is corrected later, please forgive us without notice:

Made in China





[iKF T2 Headset with Microphone](#) [pdf] User Manual
T2 Headset with Microphone, T2, Headset with Microphone, Microphone

References

- [User Manual](#)

Manuals+.