



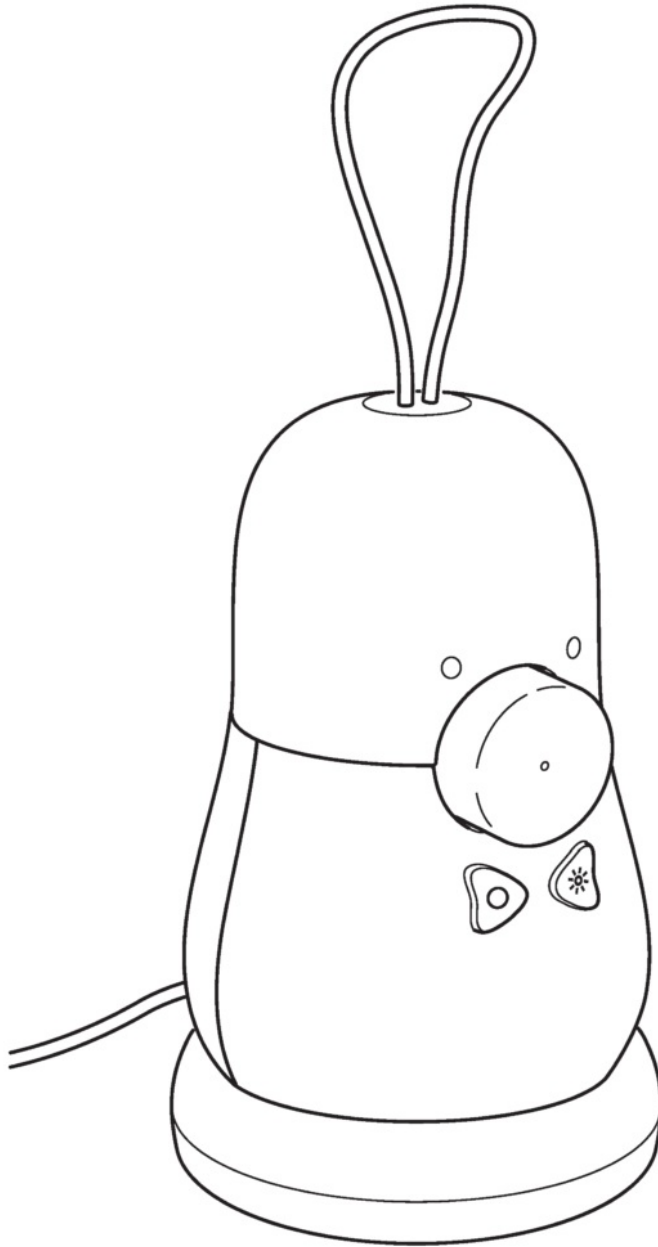
IKEA VAPPEBY Bluetooth Speaker in Peanut Shape Instruction Manual

[Home](#) » [Ikea](#) » **IKEA VAPPEBY Bluetooth Speaker in Peanut Shape Instruction Manual** 

Contents

- [1 IKEA VAPPEBY Bluetooth Speaker in Peanut Shape](#)
- [2 OERVIEW](#)
- [3 INSTRUCTION](#)
- [4 Getting started](#)
- [5 Lamp functions](#)
- [6 Speaker functions](#)
- [7 Turning ON/OFF.](#)
- [8 Good to know](#)
- [9 Care instructions](#)
- [10 Product servicing](#)
- [11 Technical data](#)
- [12 Specifications:](#)
 - [12.1 Frequently Asked Questions \(FAQ\):](#)
 - [12.1.1 Q: Can I replace the light source myself?](#)
 - [12.1.2 Q: What is the energy efficiency class of the light source?](#)
 - [12.1.3 Q: What should I do if the light source needs replacement?](#)
 - [12.2 Documents / Resources](#)
 - [12.2.1 References](#)
 - [12.3 Related Posts](#)

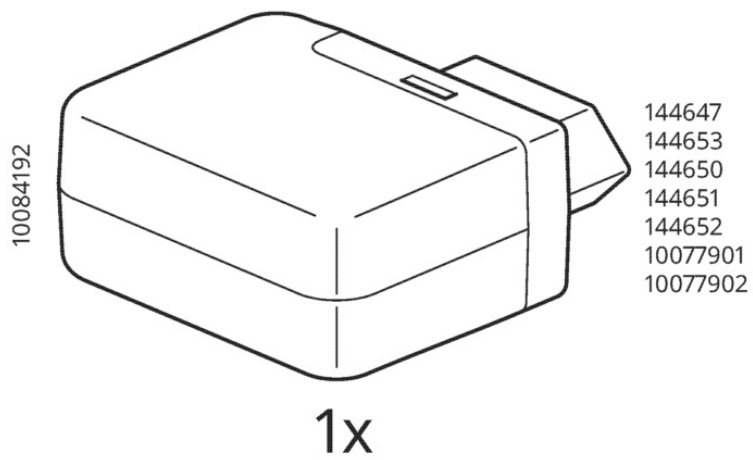
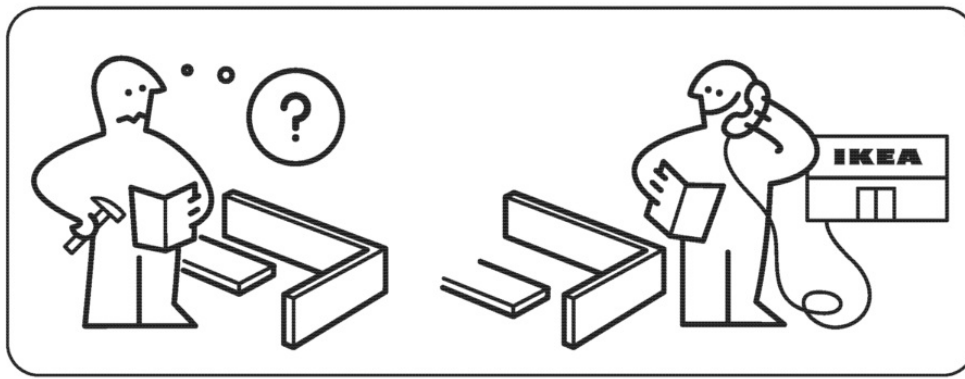
IKEA VAPPEBY Bluetooth Speaker in Peanut Shape



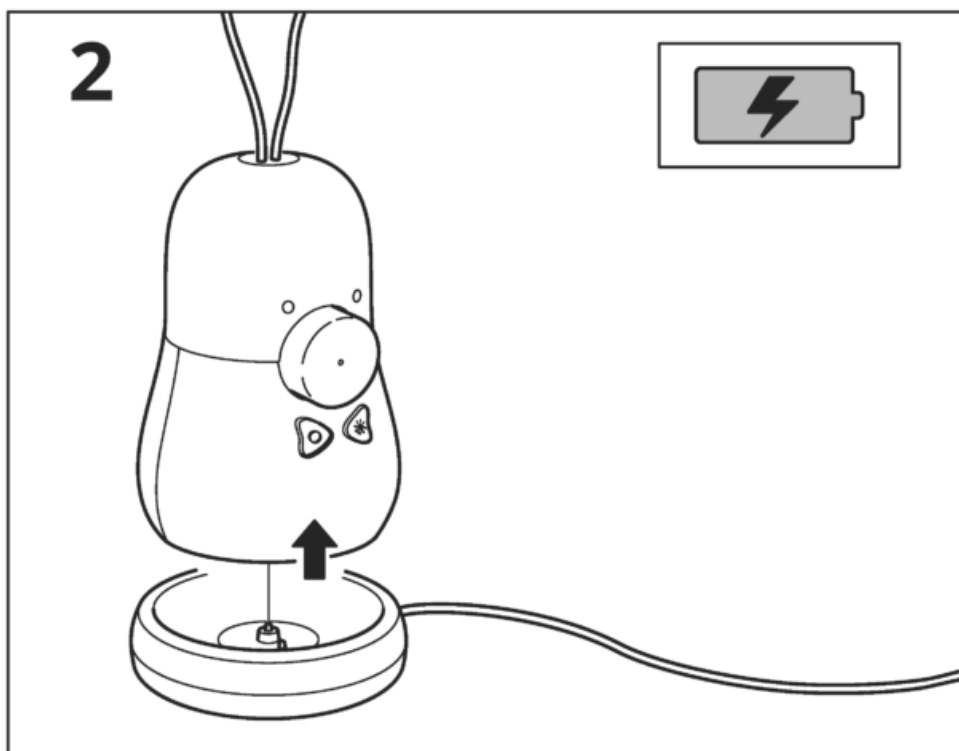
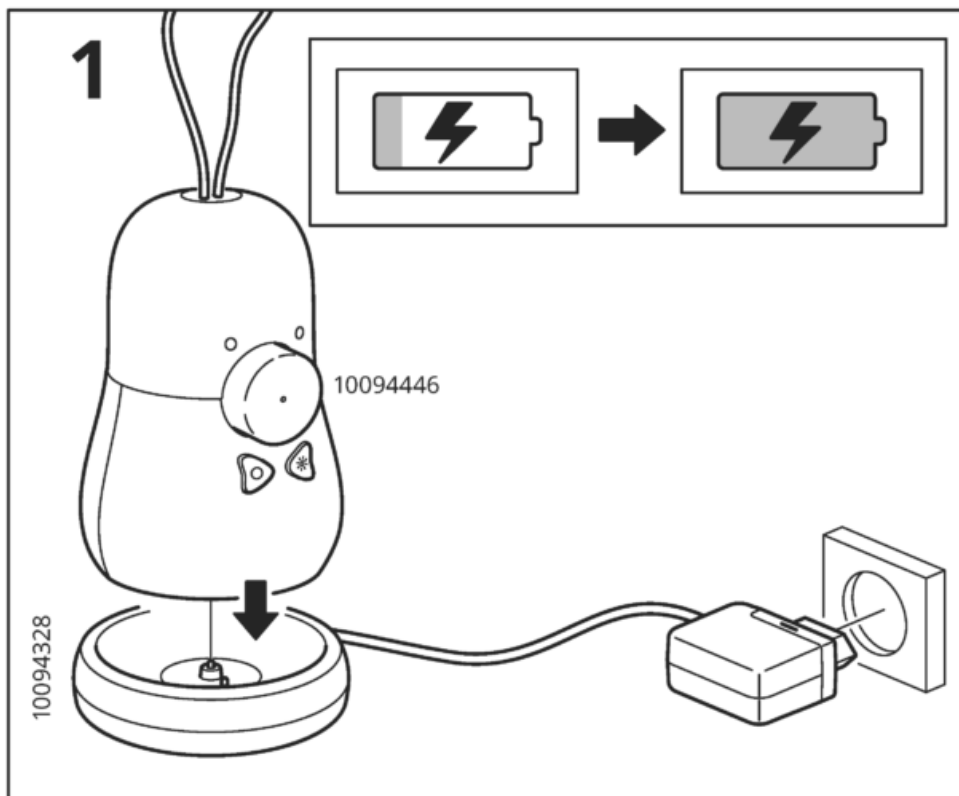
INSTRUCTION MANUAL

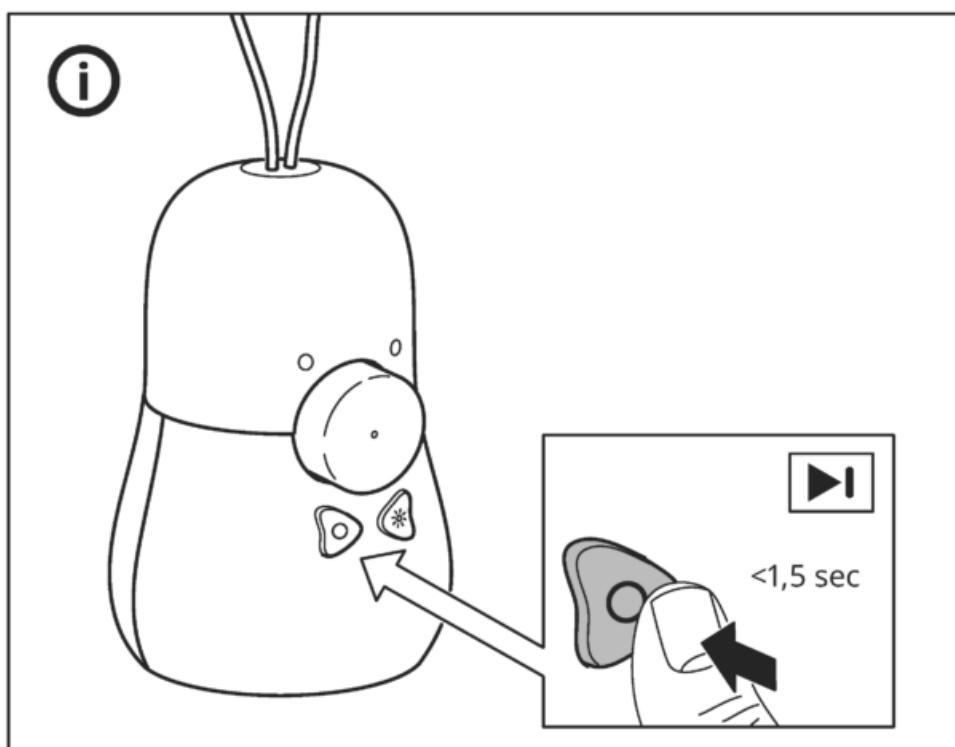
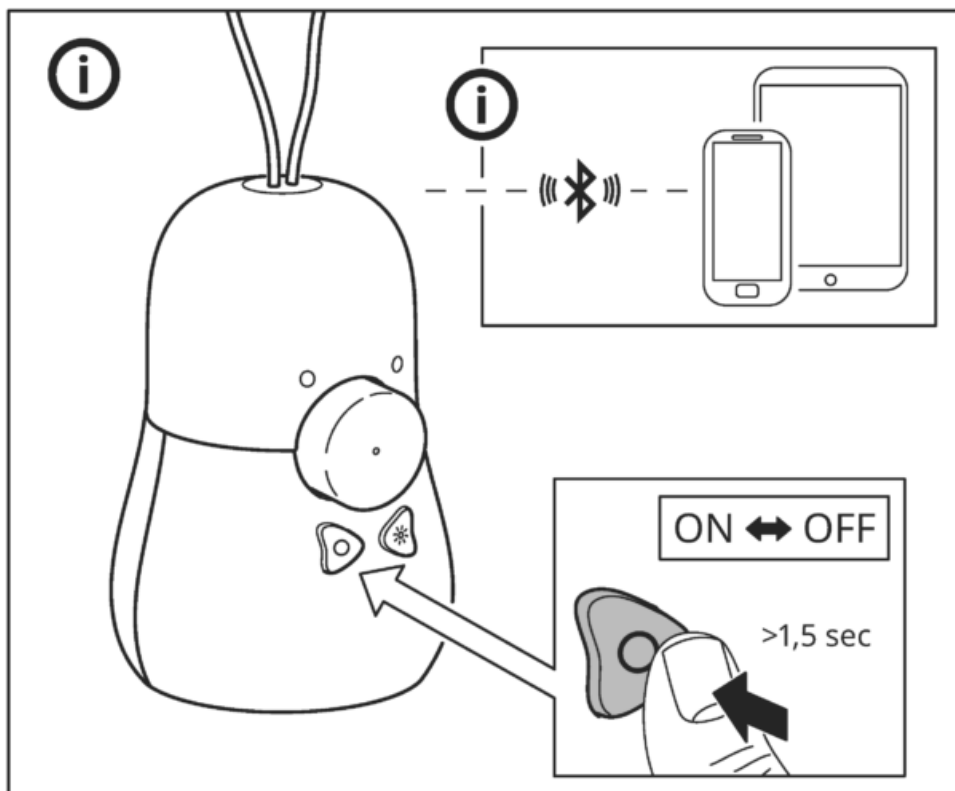
The light source contained in this luminaire shall only be replaced by the manufacturer or his service agent or a similar qualified person.

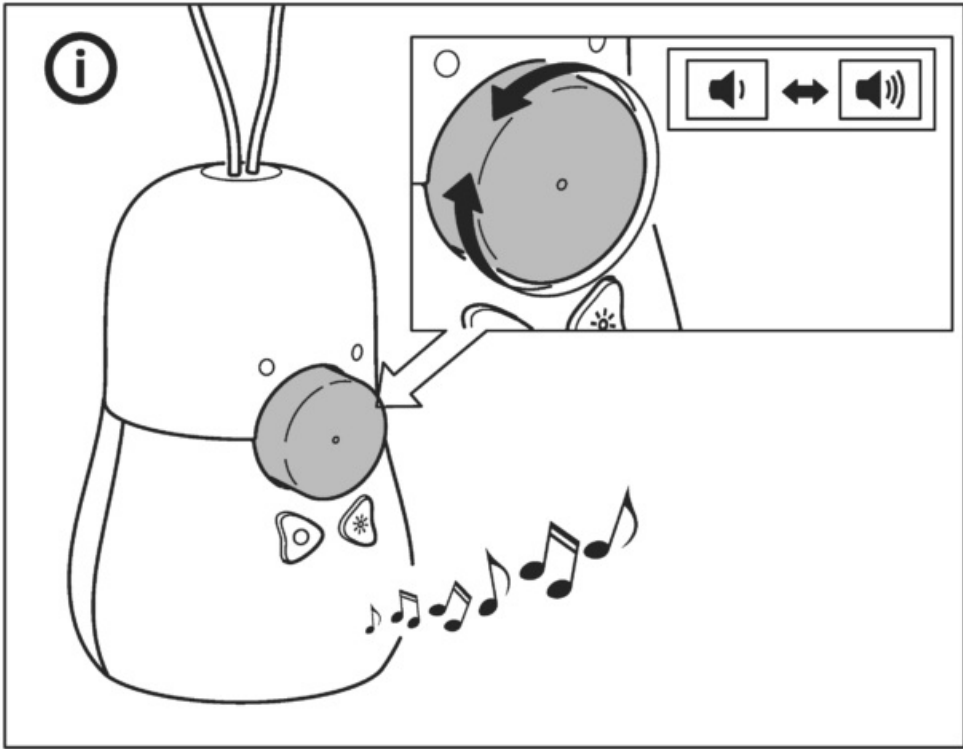
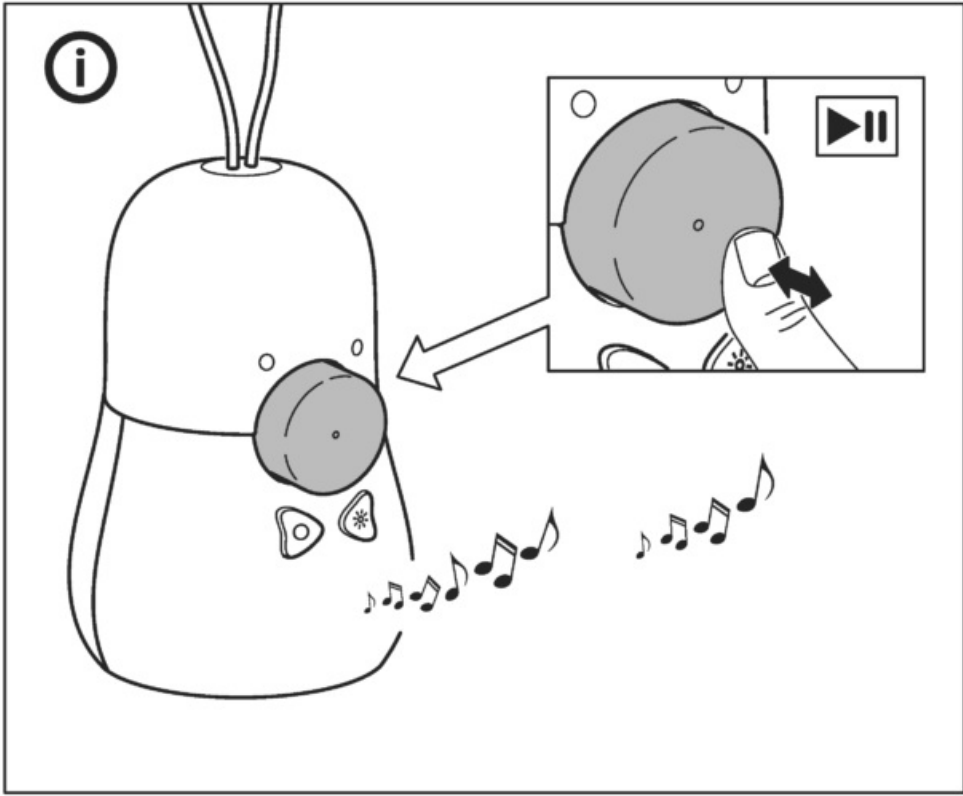
This product contains a light source of energy efficiency class E.

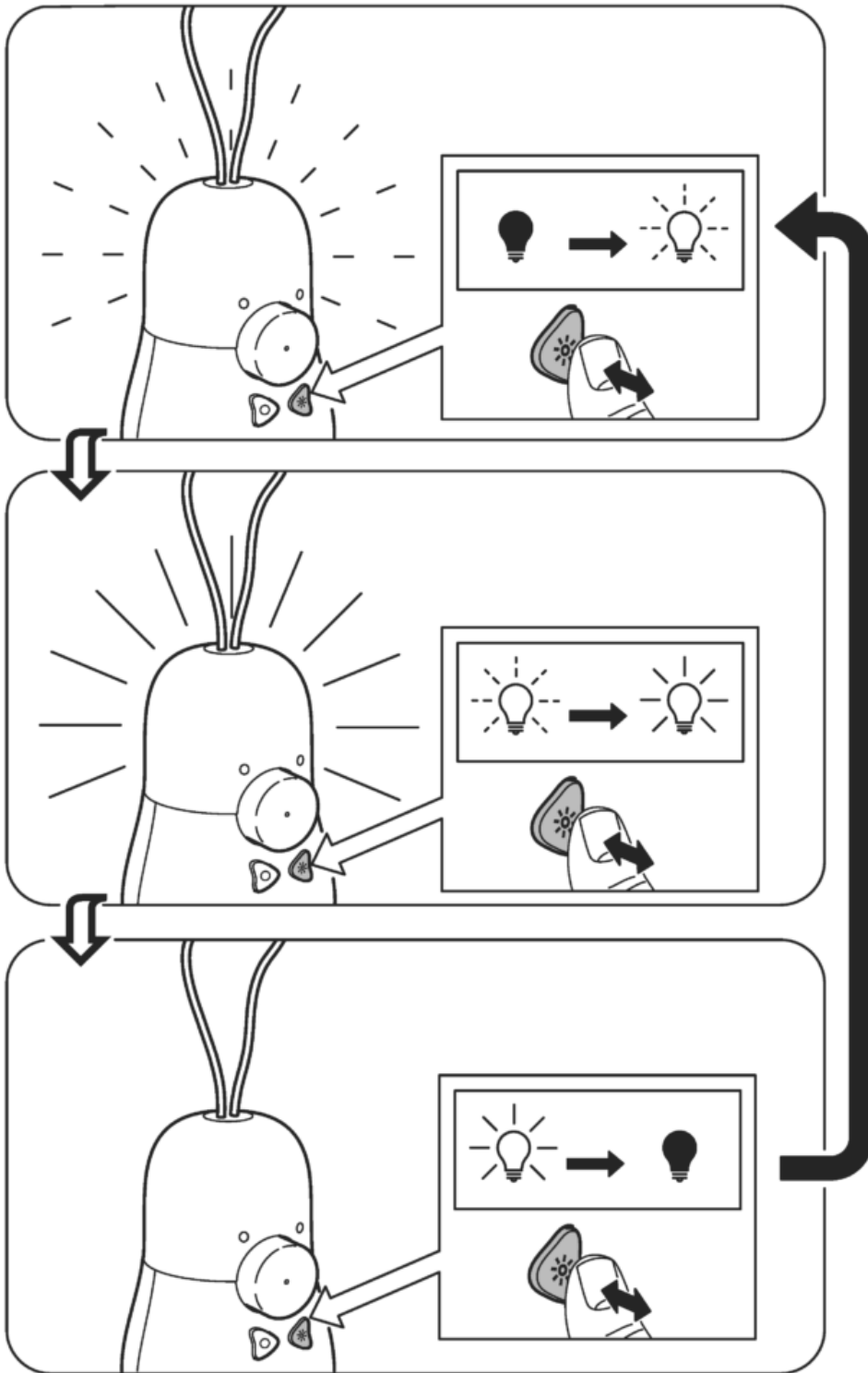


OERVIEW

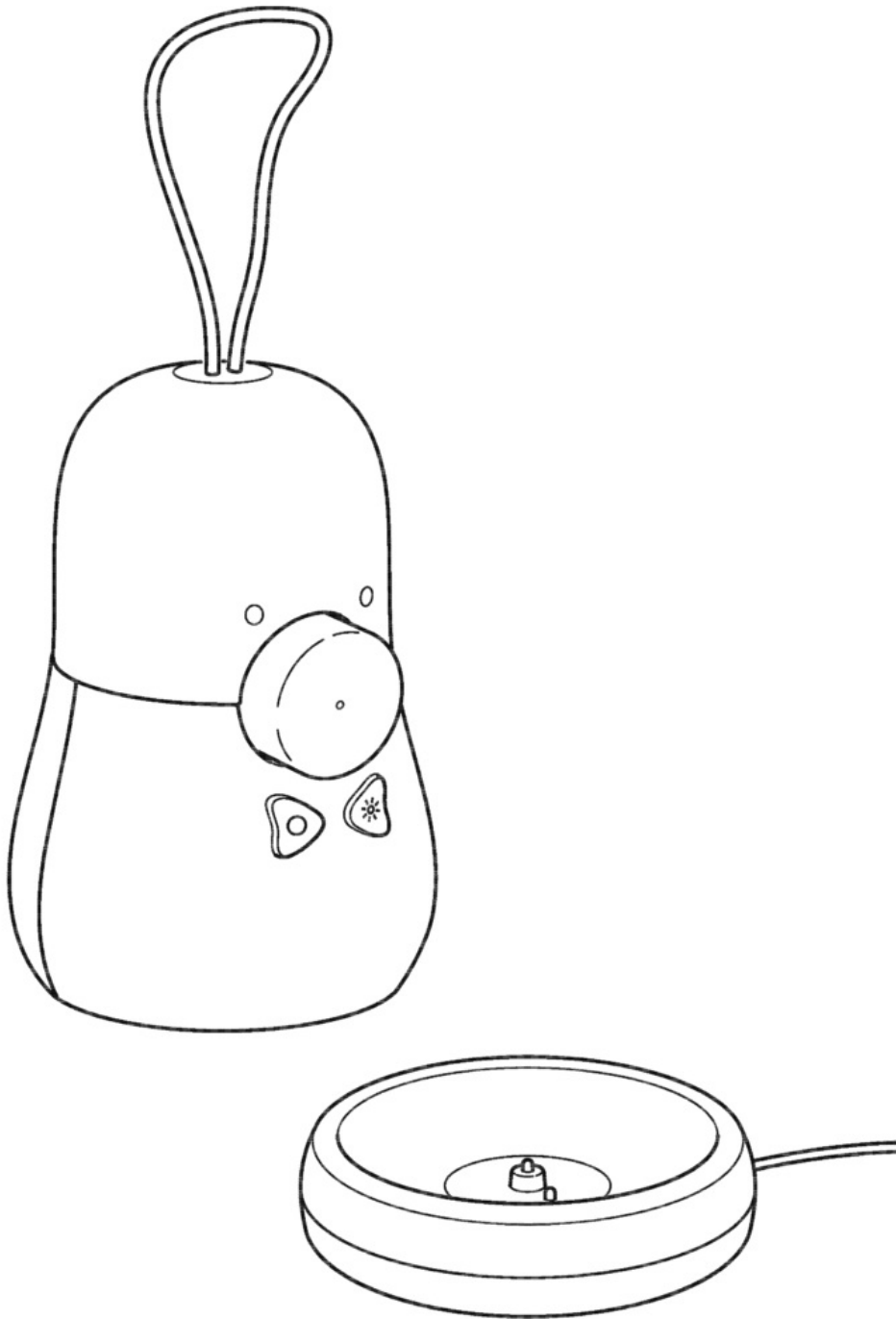








INSTRUCTION



1. Charging dock.
2. Dial for Play/Pause/Volume.
3. Speaker Power On button and skip track.
4. Lamp Switch button.
5. LED status light

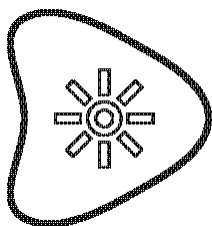
LED status

Flashing white: Bluetooth is pairing.
Solid white: Paired to a device.
Flashing red: Low battery.
Solid red: Charging (when speaker is off)

Getting started

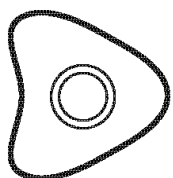
Connect the charging dock to a wall outlet and place the speaker in the charging dock (1) for charging your product before the first use and whenever the LED is blinking red to indicate low battery. When charging, the LED will remain red if the speaker is off, and turn off when the battery is fully charged.

Lamp functions



Turning ON/OFF. Press the Lamp switch (4) once to turn it on the disco light function. The light will pulse in different colours when music is played from the speaker. Press the Lamp switch a second time to switch the light to night light mode, and a third time to TURN OFF.

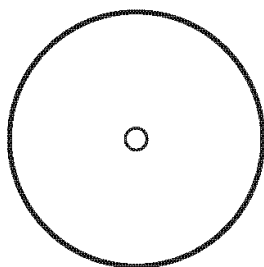
Speaker functions



Turning ON/OFF.

Press and hold the Power button (3) to turn ON and OFF your speaker.

Skip. A short press on the Power button will skip to next song.



Play/Pause. Press the dial (2) to play or pause music.

Volume. Rotate the dial (2) clockwise to increase volume and anticlockwise to reduce volume.

Auto-off. If the speaker is not paired to any device, it will turn off automatically after 5 minutes. In case the speaker is paired but no music is playing, it will turn off automatically after 20 minutes.

Bluetooth Pairing

To pair your speaker to a source device, the speaker will have to be in Bluetooth pairing mode. To pair, open

Bluetooth setting on your source device and connect to "VAPPEBY Peanut".

The speaker will enter Bluetooth pairing mode automatically when powered on the first time, and any time a previously paired device cannot be found.

To remove previously made Bluetooth pairings, reset the speaker by pressing and holding the volume knob for more than 5 s. Successful factory reset is confirmed by red LED flashing and sound feedback. Alternatively, go to the Bluetooth menu on your source device and un-pair.

Good to know

- The speaker is protected against dust and water according to IP54.
- Devices may get warm during charging; this is completely normal and they will gradually cool down again after they are fully charged.
- Charging time may vary based on the device's battery capacity, charge level, the age of the battery and the temperature in the surrounding area.
- Storage temperature: -20°C to 25°C (-4°F to 77°F).
- Unplug the product from the power supply before cleaning and when it is not in use.
- It is normal for the battery to become hot during charging and it will gradually cool down after charging.
- Battery should not be left discharged for a longer period.
- Battery should not be charged while in contact with flammable material like textiles.

WARNING:

- Too high volume can damage your hearing
- Only use the included 24V adapter for charging.
- Do not charge product when wet.
- Only charge the product indoors.
- Do not use a defective power supply when charging the product.
- Never install the product in a confined space.
- Always leave a space of at least 5 mm around the product for ventilation.
- Children should be supervised to ensure they do not misuse the product.
- Do not modify, disassemble, open, drop, crush, puncture, or shred battery.
- Do not expose the battery to rain or water.
- Risk of fires and burns. Do not open, crush, heat above 60 °C (140 °F), or incinerate.
- Keep battery away from open flame or sunlight to prevent heat build-up.
- Keep battery away from high voltage devices.
- This product is not a toy, ensure that all persons who use this product read and follow these warnings and instructions.
- Do not short-circuit the battery or its cells.
- In the event of a cell leaking, do not allow the liquid to come in contact with the skin or eyes.

Save these instructions for future use.

Care instructions

To clean the product, wipe with a soft moistened cloth. Use another soft, dry cloth to wipe dry.

Note!

Never use abrasive cleaners or chemical solvents as this can damage the product.

Product servicing

Do not attempt to repair this product yourself, as opening or removing covers may expose you to dangerous voltage points or other risks.

Disassembly of product and removal of battery is only intended at product end of life and shall be performed by a skilled professional.

Technical data

Model Name: VAPPEBY peanut

Type Number: E2125

Battery capacity: 3.6V DC, 3300 mAh, 12 Wh, Li-ion

Input: 24.0V DC, 0.29A,

Estimated battery play time at 50% volume: 11 – 13 h

Operating temperatures: 0°C to 40°C (32°F to 104°F)

Operating humidity: 0 to 95%RH

Operating Frequency: 2400-2483.5 MHz

Radio output power: 3 dBm (EIRP)

Decorative light: 2 lm, 2600 K

IP Class: IP54

Power Supply unit:

Type: ICPSW24-7-3

Input:: 100-240 VAC, 50/60 Hz, 0.11A

Output: 24.0V DC, 0.29 A, Max 7.0W

Average active efficiency: 80.0 %

No load power consumption: 0.05W

Indoor use only

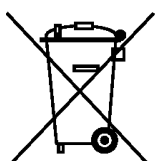
Manufacturer: IKEA of Sweden AB

(commercial registration number: 556074-7551)

Address: Box 702, SE-343 81 Älmhult, SWEDEN

The Bluetooth®

word mark and logos are registered trademarks owned by Bluetooth SIG, Inc. and any use of such marks by IKEA is under license. Other trademarks and trade names are those of their respective owners.



The crossed-out wheeled bin symbol indicates that the item should be disposed of separately from household waste. The item should be handed in for recycling in accordance with local environmental regulations for waste disposal. By separating a marked item from household waste, you will help reduce the volume of waste sent to incinerators or land-fill and minimize any potential negative impact on human health and the environment. For more information, please contact your IKEA store.

© Inter IKEA Systems B.V. 2022

—

Specifications:

- Model: VAPPEBY
- Manufacturer Part Number: 10084192
- Package Contents: 1x VAPPEBY, including components 144647, 144653, 144650, 144651, 144652, 10077901, 10077902

Frequently Asked Questions (FAQ):

Q: Can I replace the light source myself?

A: No, the light source should only be replaced by the manufacturer, an authorized service representative, or a qualified person.



Q: What is the energy efficiency class of the light source?

A: The light source is classified as energy efficiency class E.

Q: What should I do if the light source needs replacement?

A: Contact the manufacturer or an authorized service provider for assistance in replacing the light source.

Documents / Resources

| | |
|---|--|
| <div><p>VAPPEBY</p></div> | <p>IKEA VAPPEBY Bluetooth Speaker in Peanut Shape [pdf] Instruction Manual</p> <p>VAPPEBY Bluetooth Speaker in Peanut Shape, VAPPEBY, Bluetooth Speaker in Peanut Shape, Speaker in Peanut Shape, in Peanut Shape, Peanut Shape, Shape</p> |
|---|--|

References

- [User Manual](#)

Manuals+. Privacy Policy

This website is an independent publication and is neither affiliated with nor endorsed by any of the trademark owners. The "Bluetooth®" word mark and logos are registered trademarks owned by Bluetooth SIG, Inc. The "Wi-Fi®" word mark and logos are registered trademarks owned by the Wi-Fi Alliance. Any use of these marks on this website does not imply any affiliation with or endorsement.