



IKEA SYMFONISK Wireless Charging Shelf for WiFi Sonos Speaker Instruction Manual

[Home](#) » [Ikea](#) » **IKEA SYMFONISK Wireless Charging Shelf for WiFi Sonos Speaker Instruction Manual** 

Contents

- [1 IKEA SYMFONISK Wireless Charging Shelf for WiFi Sonos Speaker](#)
- [2 INSTALLATION](#)
- [3 BATTERY](#)
- [4 Instructions for use](#)
- [5 Good to know](#)
- [6 Technical data](#)
- [7 FCC STATEMENT](#)
- [8 Documents / Resources](#)
 - [8.1 References](#)
- [9 Related Posts](#)



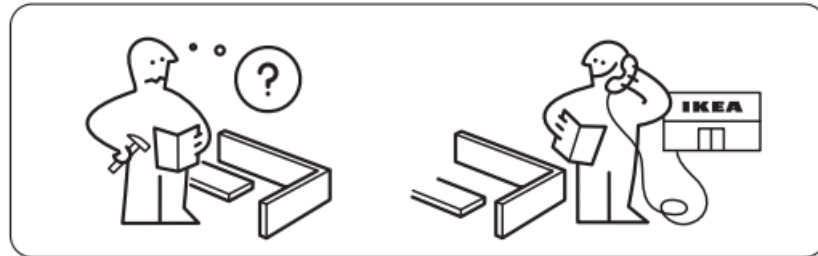
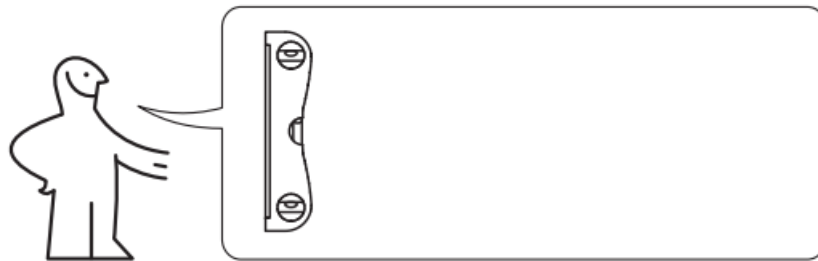
IKEA SYMFONISK Wireless Charging Shelf for WiFi Sonos Speaker



WARNING

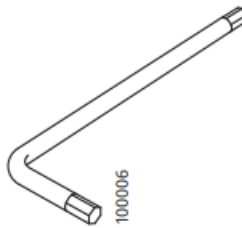
As wall materials vary, screws for fixing to wall are not included. For advice on suitable screw systems, contact your local specialized dealer.

CAUTION



4x

10081398
10081379

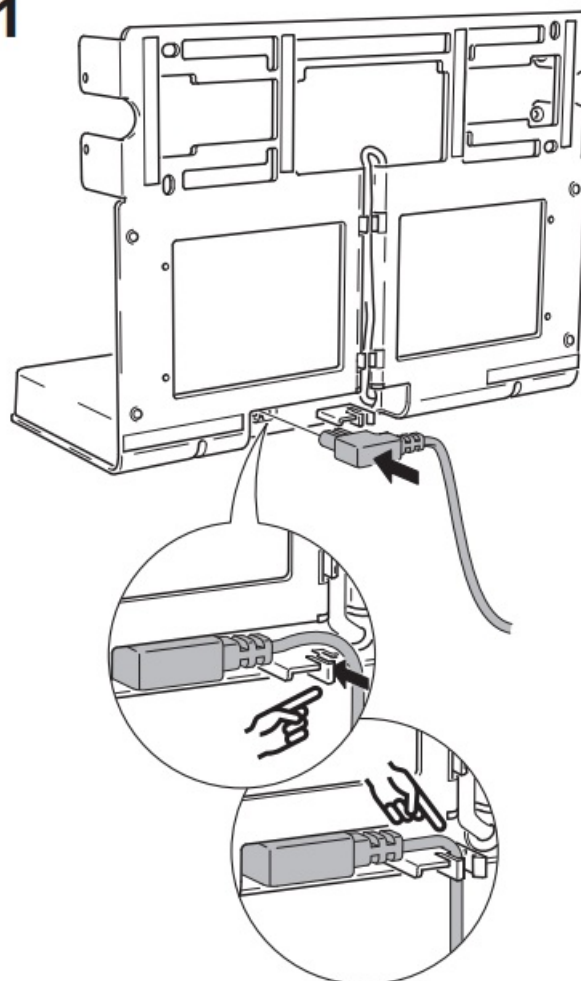


1x

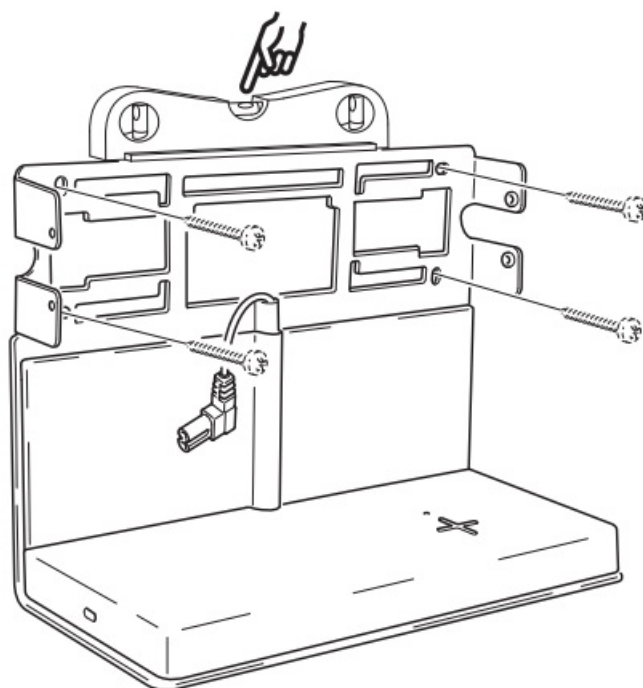
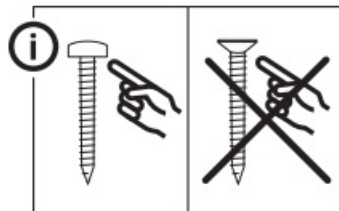
1000006

INSTALLATION

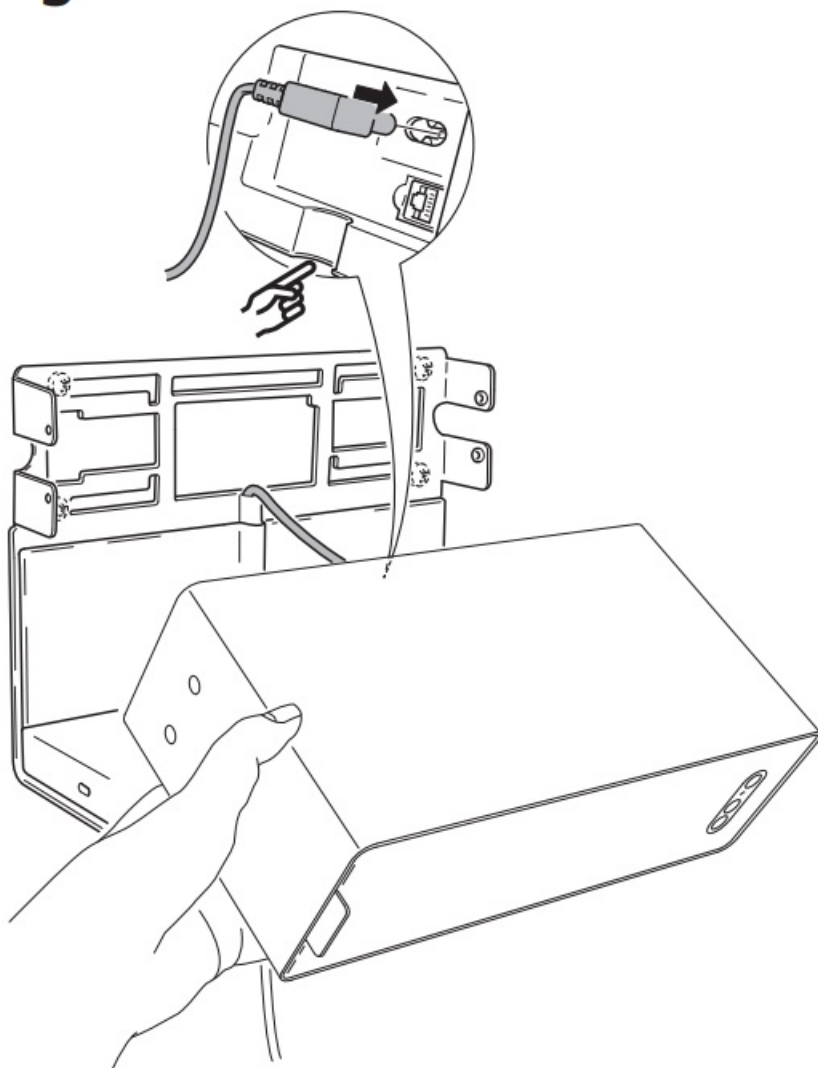
1

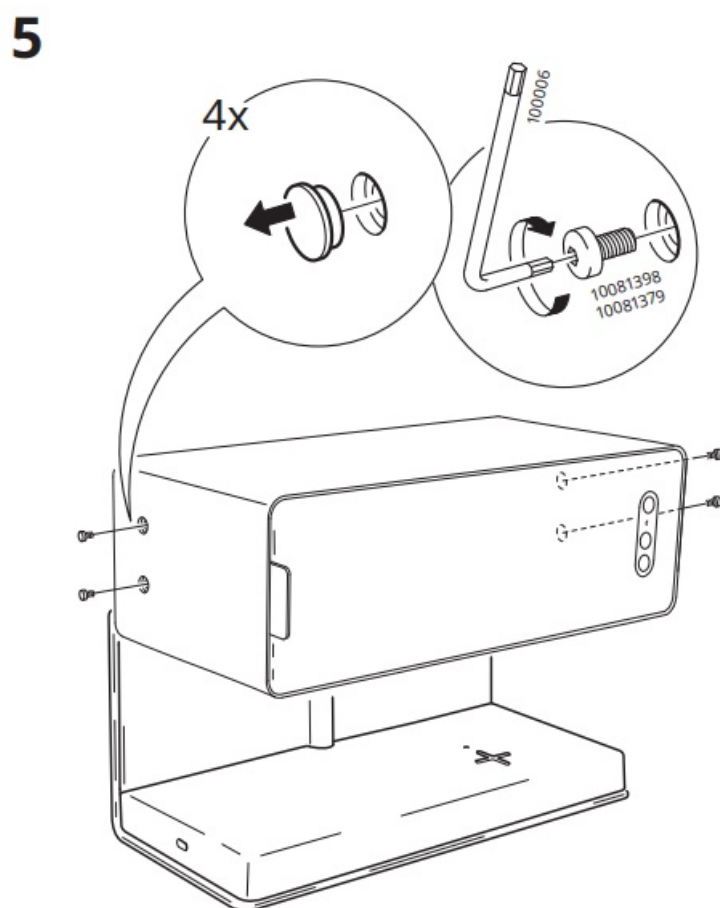
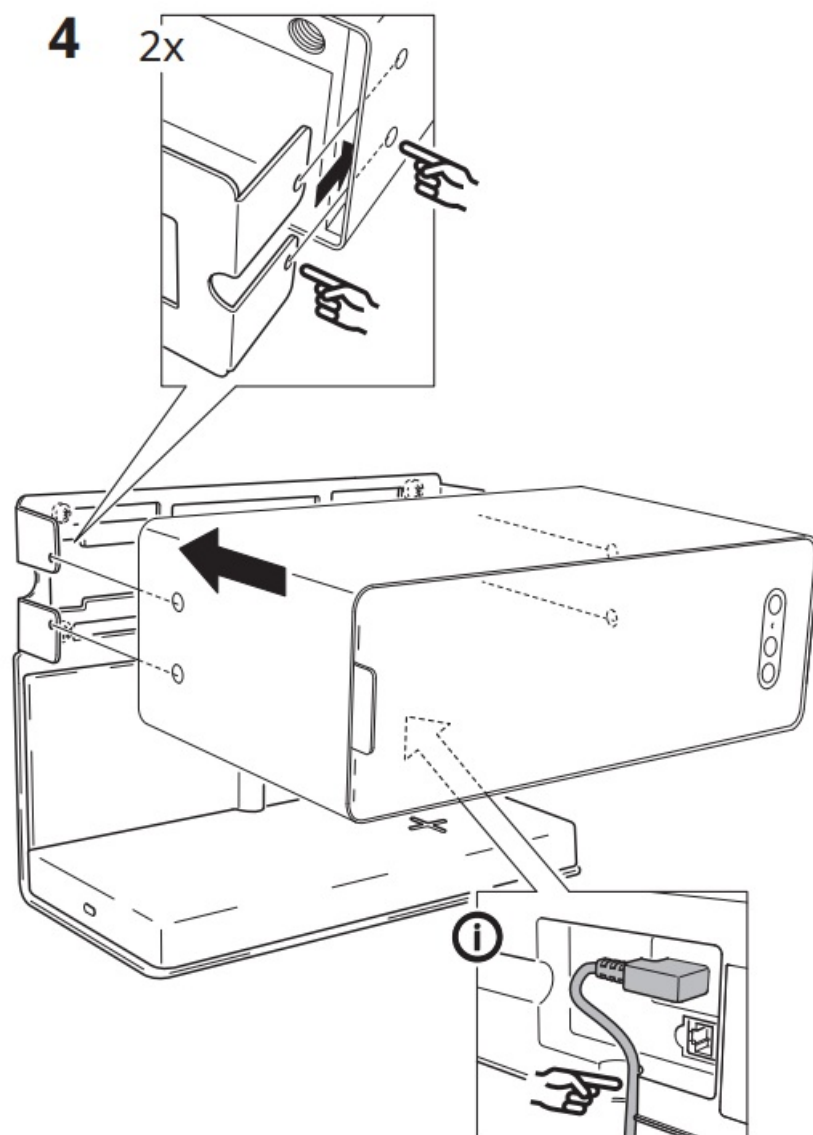


2

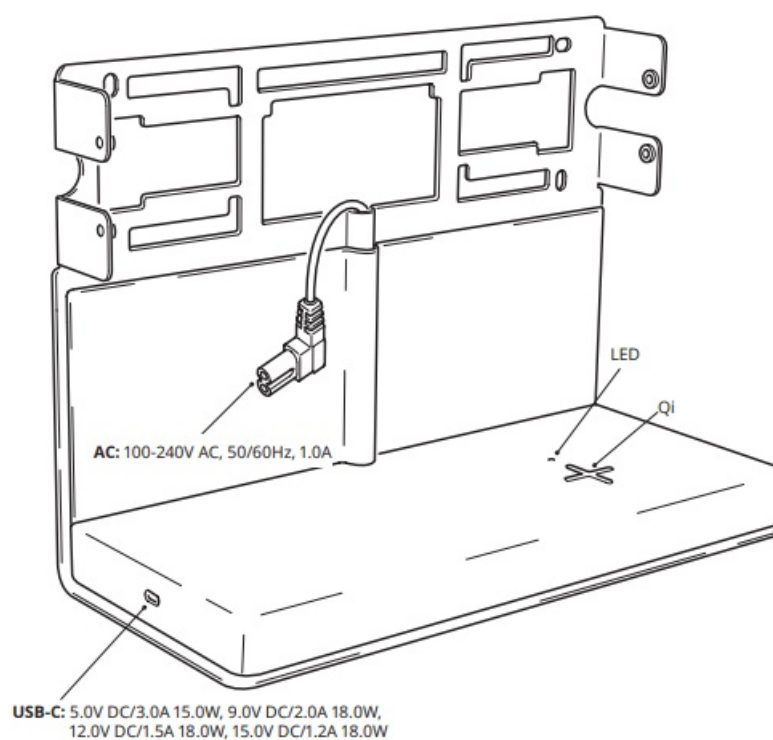
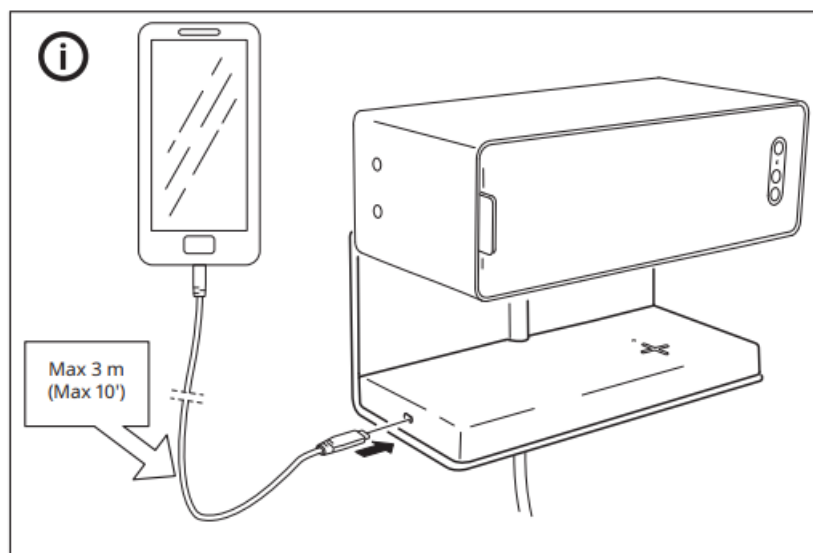
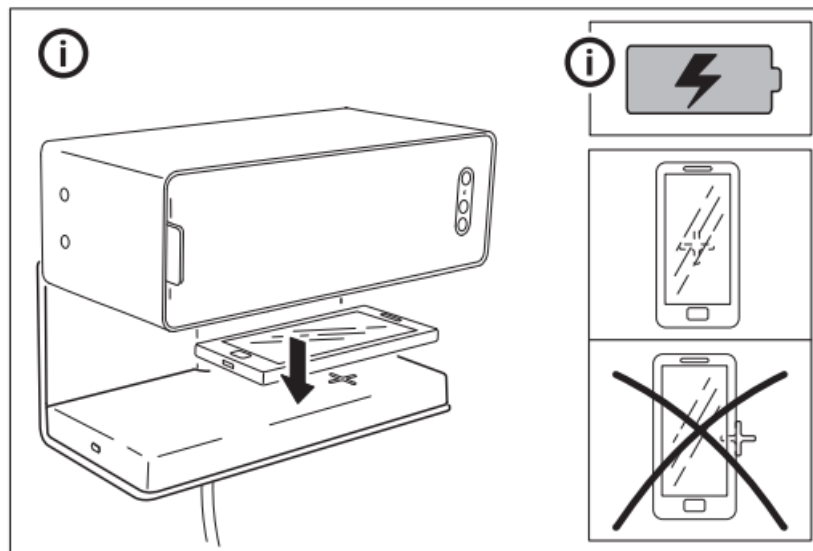


3





BATTERY



Charger features

- Charges 1 wireless and 1 USB-connected device simultaneously.
- USB-C outlet compatible with Power Delivery 3.0 standard (quick charging).
- Wirelessly charges Qi-certified devices.
- Certified according to specification Qi 1.2.4 BPP.
- Temperature and power monitor for safety.
- LED status indicator for wireless charging.

Instructions for use

- Plug the power cable into the wall socket.
- For wireless charging, place the device to be charged on top of the plus sign (+) on the charger. The device must be placed directly over the plus sign (+) for the charging function to work optimally.
- If your battery is completely discharged, it may take a few minutes before it starts charging.
- For USB charging, insert the USB cable in the free slot and the other end in the device you want to charge.
- When charging, only use a recommended USB cable for your device and replace faulty cables immediately.

Wireless charging LED indicator:

- **Power on:** LED lights up for 3 seconds.
- **Charging:** LED on.
- **Charging completed:** LED off.
- **Error:** LED flashes.

Good to know

- Devices may get warm during charging. This is completely normal, and they will gradually cool down again after they are fully charged.
- Charging time may vary based on the device's battery capacity, charge level, the age of the battery and the temperature in the surrounding area.
- Charger operating temperature: 0°C to 40°C (32°F to 104°F).
- USB cable length and quality influence charging speed and performance.
- Unplug the charger from the power source before cleaning and when it is not in use.
- To clean the charger, wipe it with a moist cloth. Never submerge the charger in water.

Recommended precautionary measures and technical data, see the back of the charger.

Save these instructions for future use.

WARNING:

- The wall socket must be located near the equipment and must be easily accessible.
- Only use in dry locations.

- Children should be supervised to ensure they do not play with the product.
- Do not subject the devices to wet, moist or excessively dusty environments since this can cause damage to the devices.
- If the device is damaged, it should be disposed of.
- Never use a damaged or faulty USB cable for charging, since this can damage the product and your devices.
- Only wirelessly charge devices that are Qi-certified.
- Maximum load on shelf: 3 kg

Product Servicing

Do not attempt to repair this product yourself. If you open or remove parts, you may expose yourself to dangerous voltage points or other risks.

RF EXPOSURE INFORMATION

According to RF exposure regulations, under normal operations, the end user shall refrain from being closer than 20 cm from the device.

Technical data

- **Model:** SYMFONISK charging shelf
- **Type:** E2122
- **Input:** 100-240V AC, 50/60Hz, Max 2.5A

Output:

- **AC:** 100-240 V AC, 50/60Hz, 1.0A

USB-C:

- 5.0V DC/3.0A 15.0W, 9.0V DC/2.0A 18.0W,
- 12.0V DC/1.5A 18.0W, 15.0V DC/1.2A 18.0W

Qi:

- **Operating frequency:** 110 – 148 kHz Output power: 0 dBμA /m at 10m

Indoor use only

Manufacturer: IKEA of Sweden AB

Address:

Box 702, SE-343 81 Älmhult, SWEDEN

The 'Qi' symbol is a trademark of the Wireless Power Consortium

FCC STATEMENT

This device complies with Part 15 of the FCC Rules. This device contains license-exempt transmitter(s)/receiver(s) that comply with Innovation Science and Economic Development Canada's license-exempt RSS standard(s). Operation is subject to the following two conditions:

1. this device may not cause harmful interference, and
2. this device must accept any interference received, including interference that may cause undesired operation of the device.

WARNING:

Any changes or modifications to this unit not expressly approved by the party responsible for compliance could void the user's authority to operate the equipment.

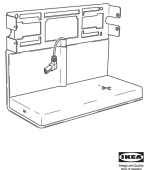


NOTE:

This equipment has been tested and found to comply with the limits for a Class B digital device, pursuant to part 15 of the FCC Rules. These limits are designed to provide reasonable protection against harmful interference in a residential installation. This equipment generates, uses and can radiate radio frequency energy and, if not installed and used in accordance with the instructions, may cause harmful interference to radio communications. However, there is no guarantee that interference will not occur in a particular installation. If this equipment does cause harmful interference to radio or television reception, which can be determined by turning the equipment off and on, the user is encouraged to try to correct the interference by one or more of the following measures:

- Reorient or relocate the receiving antenna.
- Increase the separation between the equipment and receiver.
- Connect the equipment into an outlet on a circuit different from that to which the receiver is connected.
- Consult the dealer or an experienced radio/TV technician for help.




The crossed-out wheeled bin symbol indicates that the item should be disposed of separately from household waste. The item should be handed in for recycling in accordance with local environmental regulations for waste disposal. By separating a marked item from household waste, you will help reduce the volume of waste sent to incinerators or land-fill and minimize any potential negative impact on human health and the environment. For more information, please contact your IKEA store.

Documents / Resources

<p>SYMFONISK</p> 	<p>IKEA SYMFONISK Wireless Charging Shelf for WiFi Sonos Speaker [pdf] Instruction Manual</p> <p>E2122, FHO-E2122, FHOE2122, SYMFONISK Wireless Charging Shelf for WiFi Sonos Speaker, SYMFONISK, Wireless Charging Shelf for WiFi Sonos Speaker, SYMFONISK Wireless Charging Shelf, Wireless Charging Shelf, Charging Shelf, Shelf, E2122</p>
<p>SYMFONISK</p> 	<p>IKEA SYMFONISK Wireless Charging Shelf [pdf] Instruction Manual</p> <p>SYMFONISK, Wireless Charging Shelf, SYMFONISK Wireless Charging Shelf, Charging Shelf, Shelf</p>
<p>SYMFONISK</p> 	<p>IKEA SYMFONISK Wireless Charging Shelf [pdf] User Manual</p> <p>SYMFONISK Wireless Charging Shelf, SYMFONISK, Wireless Charging Shelf, Charging Shelf, Shelf</p>

References

- [Hej! Welcome to IKEA Global](#)

-  [Sonos | Wireless Speakers and Home Sound Systems](#)
-  [Hej! Welcome to IKEA Global](#)
-  [Sonos | Wireless Speakers and Home Sound Systems](#)

Manuals+.